



1850 SERIES MAXIMUM SECURITY LAMINATED DEADLOCKS/HOOKBOLTS

- For single leaf doors where the gap between door and jamb is large
- Accepts standard mortise cylinder
- Steel with corrosion resistant plating
- Case size: 1" x 6"



HOOKBOLT



LONG THROW DEADLOCK (A)

MFG #	BACKSET	FINISH	EZ #
LONG THROW DEADLOCK: 5/8" X 1-3/8" THROW			
MS1850S110 628	7/8"	Aluminum	025812
MS1850S410 628	1-1/2"	Aluminum	025815
LONG THROW LESS FACEPLATE DEADLOCK			
MS1853A 210	31/32"	—	035010
MS1853A 310	1-1/8"	—	035012
SHORT THROW DEADLOCK: 5/8" X 13/16" THROW			
MS1850S220 628	31/32"	Aluminum	067343
MS1850S320 628	1-1/2"	Aluminum	067344
HOOKBOLT: 5/8" X 13/16" THROW			
MS1850S150 628	7/8"	Aluminum	025817
MS1850S450 628	1-1/2"	Aluminum	025820
HOOKBOLT LESS FACEPLATE: 5/8" X 13/16" THROW			
MS1853A 250MC	31/32"	—	035011
MS1853A 350MC	1-1/8"	—	035013

2190 SERIES DUAL FORCE® INTERCONNECTED DEADBOLT/DEADLATCH

BHMA
CERTIFIED
GRADE 1



- Interconnected deadbolt and deadlatch operate with a single motion release
- Meets the most stringent building code egress requirements
- Electrified lever option for access control
- Re-handable
- Clutched exterior lever trim
- Passage mode lever sets available for interior doors
- FaceStyle adaptable faceplate system
- Retrofits to MS® prepped doors
- Key controlled extension of deadbolt and latch holdback
- Positive latching for energy efficiency
- ANSI/BHMA Type E82101 Grade 1

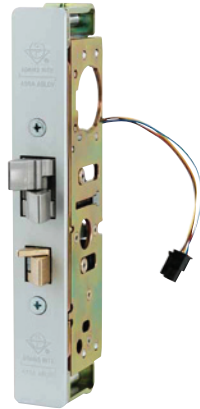
MFG #	BACKSET	FINISH	EZ #
WITH TRIM SET			
2190 311 101 32D	1-1/8"	Satin Stainless	102659
WITH ELECTRIFIED TRIM SET			
2190 311 201 32D	1-1/8"	Satin Stainless	102661

THE STEEL HAWK 4300 ELECTRIFIED LATCH

A



BHMA
CERTIFIED
GRADE 1



- The easiest way to electrify an aluminum entrance door
- Non-handed right out of box due to it's patented two-way winged technology
- Interfaces with existing Adams Rite handles, paddles and the new 4600 designer series handles
- Adapts to 12, 16, 24 VDC
- All steel construction with stainless steel latchbolts
- Retrofits to MS® prep
- Direct replacement for 4900/4500/4700 deadlatches using the same strike
- Optional locked/unlocked status monitor switch
- All steel construction with stainless steel latchbolts
- Works with existing handles, paddles and new 4600 designer series handles
- WHI listed, UL 1034
- Exceeds ANSI/BHMA Grade 1 requirements

MFG #	BACKSET	EZ #
4300 20 201 628	31/32"	104334
4300 30 201 628	1-1/8"	104335

4513 SERIES STANDARD DUTY DEADLATCH

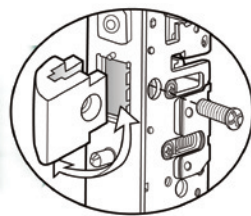


- Cylinder backset: 7/8", 31/32", 1-1/8" or 1-1/2" by special order
- Case: steel with corrosion-resistant plating 1" x 5-13/16" x depth
- Flexibility of traffic control during and after business hours; a reverse turn of the key while bolt is held retracted retains the bolt, to allow two-way traffic for hospitals, banks, stores and other buildings which require free entrance at certain times and exit-only at other times
- Interchangeable, without stile modification, with any MS1850A or MS1850S deadbolt of same backset and faceplate shape (They do not, however, provide the same maximum security level as the MS® deadbolt)
- Latch bolt: 1/2" x 1" x 1/2" throw, all metal with hardened steel internal pins
- Handing is reversible without special tools
- Auxiliary bolt: All metal, deadlocks latch bolt to prevent case-knife entry

MFG #	BACKSET	HAND	EZ #
4513 15 7/8	7/8"	Left	085473
4513 25	31/32"	Left	035025
4513 26	31/32"	Right	035026
4513 35	1-1/8"	Left	035027
4513 36	1-1/8"	Right	035028



4900 SERIES HEAVY DUTY DEADLATCH

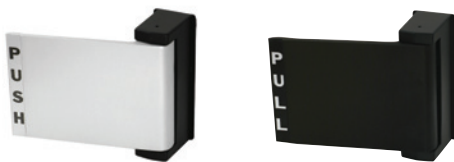


**FIELD REVERSIBLE
LATCH BOLT**

- Flexibility of traffic control and installation is offered by the 4900 series deadlatches
- A reverse turn of the key while bolt is held retracted retains the bolt, to allow two-way traffic for applications which require free entrance at certain times and exit-only at other times
- Interchangeable, without stile modification, with any MS1850A or MS1850S deadbolt of same backset and faceplate shape
- Retrofits to existing 4500/4700 deadlatch preparations; 1-3/4" minimum door thickness required
- Cylinder backset: 31/32", 1-1/8" or 1-1/2" only
- Latch bolt: 5/8" x 1" x 5/8" throw, solid brass; handing is easily reversible using only a screwdriver
- Auxiliary latch pin: Stainless steel; deadlocks latch bolt to prevent case-knife entry
- Case: Steel with corrosion-resistant plating 7/8" x 5-13/16"
- Screw-fastened tube spacer brackets allow for cleaner removal when tab mounting
- Strikeplate: Standard strike furnished is 4902 for flat jamb where door closes flush or nearly flush
- Faceplate: 1" x 6-7/8", both flat and radius faceplates are supplied
- Flat faceplates can also be adjusted in the field for right or left hand beveled edge doors
- Retrofits: existing latch locks & 8400 series exit devices

MFG #	BACKSET	FINISH	EZ #
4900 25 101 628	31/32"	Aluminum	102297
4900 35 101 313	1-1/8"	Duranodic	085484
4900 35 101 628	1-1/8"	Aluminum	085485
4900 46 101 628	1-1/2"	Aluminum	085487

DEADLATCH PADDLES



4590



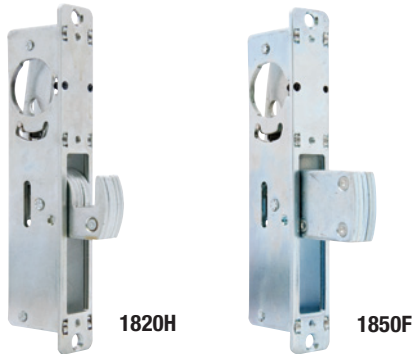
4591

- All paddles are reversible
- Units for 4500/4700/4900 series latches include reversible cam disc

MFG #	FINISH	DOOR THICKNESS	EZ #
PUSH TO LEFT			
4590 02 00 313	Duranodic	1-3/4"	001034
4590 02 00 628	Aluminum	1-3/4"	001033
4590 02 02 628	Aluminum	2-1/4" to 2-1/2"	080082
4591 02 00 313	Duranodic	1-3/4"	074885
4591 02 00 628	Aluminum	1-3/4"	074883
PUSH TO RIGHT			
4590 04 00 313	Duranodic	1-3/4"	001038
4590 04 00 628	Aluminum	1-3/4"	001037
ERGONOMIC STYLE: PUSH TO RIGHT			
4591 04 00 313	Duranodic	1-3/4"	074886
4591 04 00 628	Aluminum	1-3/4"	074884
ERGONOMIC STYLE: PUSH TO LEFT WITH MONITOR SWITCH			
4591MA02 628	Aluminum	1-3/4"	074887



MAXIMUM SECURITY BOLTS



- Maximum security bolt provides for excellent security even when a gap exists between the door & frame
- Laminated bolt provides more strength than one piece design
- Replacement for existing aluminum door flip & hook bolts
- Case size: 7/8" x 6-13/16"
- Flip bolt: 5/8" x 1-3/8" throw for swinging doors
- Hook bolt: 5/8" x 13/16" throw for sliding doors
- Includes both clear & brown anodized aluminum faceplates

MFG #	BOLT	BACKSET	EZ #
1820H118	Hook	1-1/8"	090024
1820H3132	Hook	31/32"	090023
1850F118	Flip	1-1/8"	090026
1850F3132	Flip	31/32"	090025

DEADLATCHES



- Replacement for existing aluminum door latches
- Case size: 7/8" x 6-13/16"
- Latch bolt: 5/8" x 1" x 5/8" throw
- Deadpin prevents the latch bolt being shimmed open
- Hold back function allows the latch to be "dogged" during store opening times
- Simply hold latch in and turn key backwards to "dog" the latch
- Includes both clear & brown anodized aluminum faceplates

MFG #	BACKSET	HAND	EZ #
4510DL118LH	1-1/8"	Left	103465
4510DL118RH	1-1/8"	Right	090030
4510DL3132LH	31/32"	Left	090027
4510DL3132RH	31/32"	Right	090028

DEADLATCH LEVER HANDLES



- Works with aluminum door deadlatches such as the LSDA 4510 Series
- Handle is designed to fit the hand and allow for minimum force to open the deadlatch
- Reversible cam disc included

MFG #	FINISH	EZ #
4560L AL	Aluminum	090031
4560L DU	Duranodic	090032

DEADLATCH PADDLE HANDLES



4590P AL



CAMPLUG

- For aluminum door latches on both outswing and inswing doors
- Reversible cam disc included
- Both Push & Pull stickers included which allows for: Push to Right, Push to Left, Pull to Right or Pull to Left

MFG #	FINISH	EZ #
4590P AL	Aluminum	090033
4590P DU	Duranodic	090034
CAMPLUG	Aluminum	090932