

Weekly Major Equity Indexes Charts Newsletter

June 18, 2018

The Weekly Equity Indexes Charts Newsletter provides Cornelius Luca's trade ideas, model signals, and absolute charts

© 2018 Luca Global Markets, LLC. All rights reserved. This content is provided as general information only and does not constitute investment advice or a representation that any investment, security or other product is suitable for any person. This content reflects the opinions only of the author and cannot be interpreted as advice.

This content is the intellectual property of Cornelius Luca. Any copying, distribution or redistribution of this content is expressly prohibited without the prior written consent of Cornelius Luca.

Cornelius Luca shall not be liable for any errors in the content, or for any actions taken in reliance thereon.

Trade Ideas

- G7: Long S&P 500 *only while above* the 21-day exponential moving average
- G7: Short DAX *while below* the 21-day exponential moving average
- BRIC: Short Brazil's Bovespa *while below* the 5-day exponential moving average

G7 Equity Indexes

Model Signals - Daily & Weekly

| G7 Index | Daily Model | since | Daily Bias (> or < 21-day EMA) | Daily Risk | Weekly Model | since | Weekly Bias (> or < 21-week EMA) | Weekly Risk |
|----------------------|--------------------|--------------|---|-------------------|---------------------|--------------|---|--------------------|
| S&P 500 | S | 15-Jun | slightly bullish | slightly bearish | S | 18-Jun | slightly bullish | slightly bearish |
| Germany DAX | S | 28-May | slightly bearish | slightly bearish | S | 18-Jun | slightly bullish | slightly bearish |
| UK FTSE | S | 15-Jun | slightly bearish | slightly bearish | S | 24-May | slightly bullish | slightly bearish |
| France CAC | S | 15-Jun | slightly bearish | slightly bearish | S | 18-Jun | slightly bullish | slightly bearish |
| Italy Borsa Italiana | S | 15-Jun | slightly bearish | slightly bearish | L | 14-Jun | slightly bearish | slightly bullish |

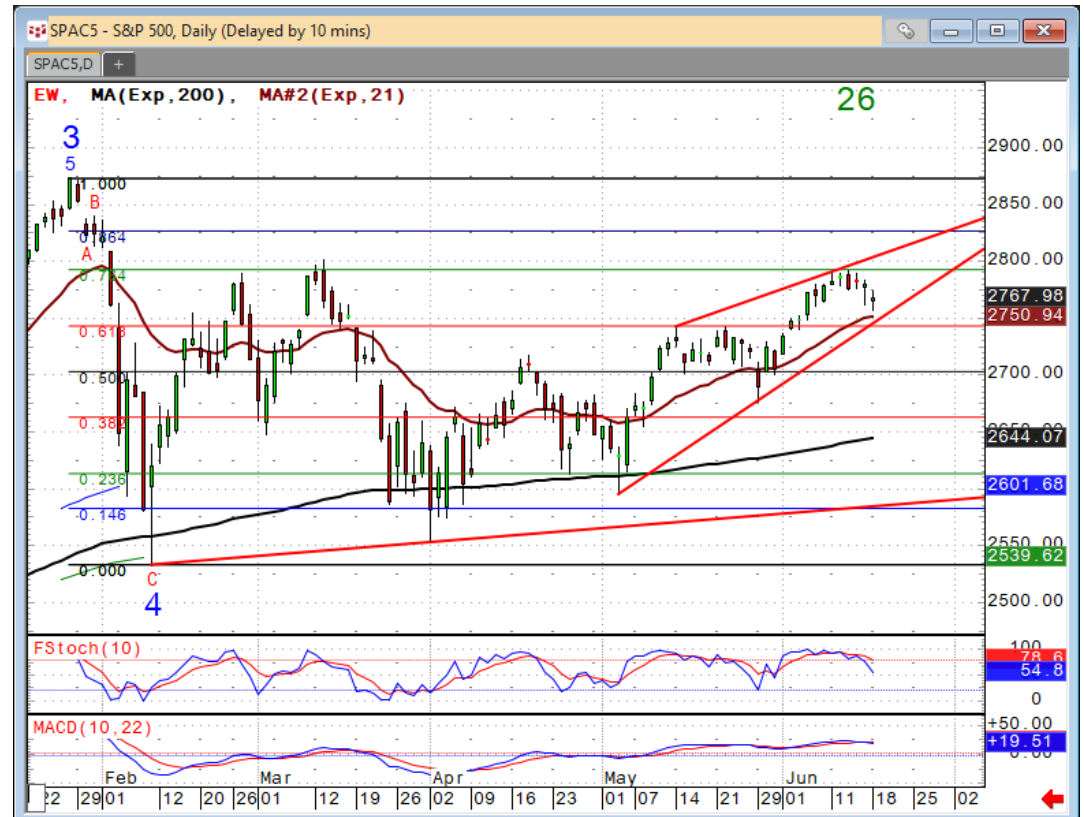
Source: Proprietary Luca Global Markets, LLC Model

S&P 500

Comment:

Long S&P 500 only while above the 21-day EMA

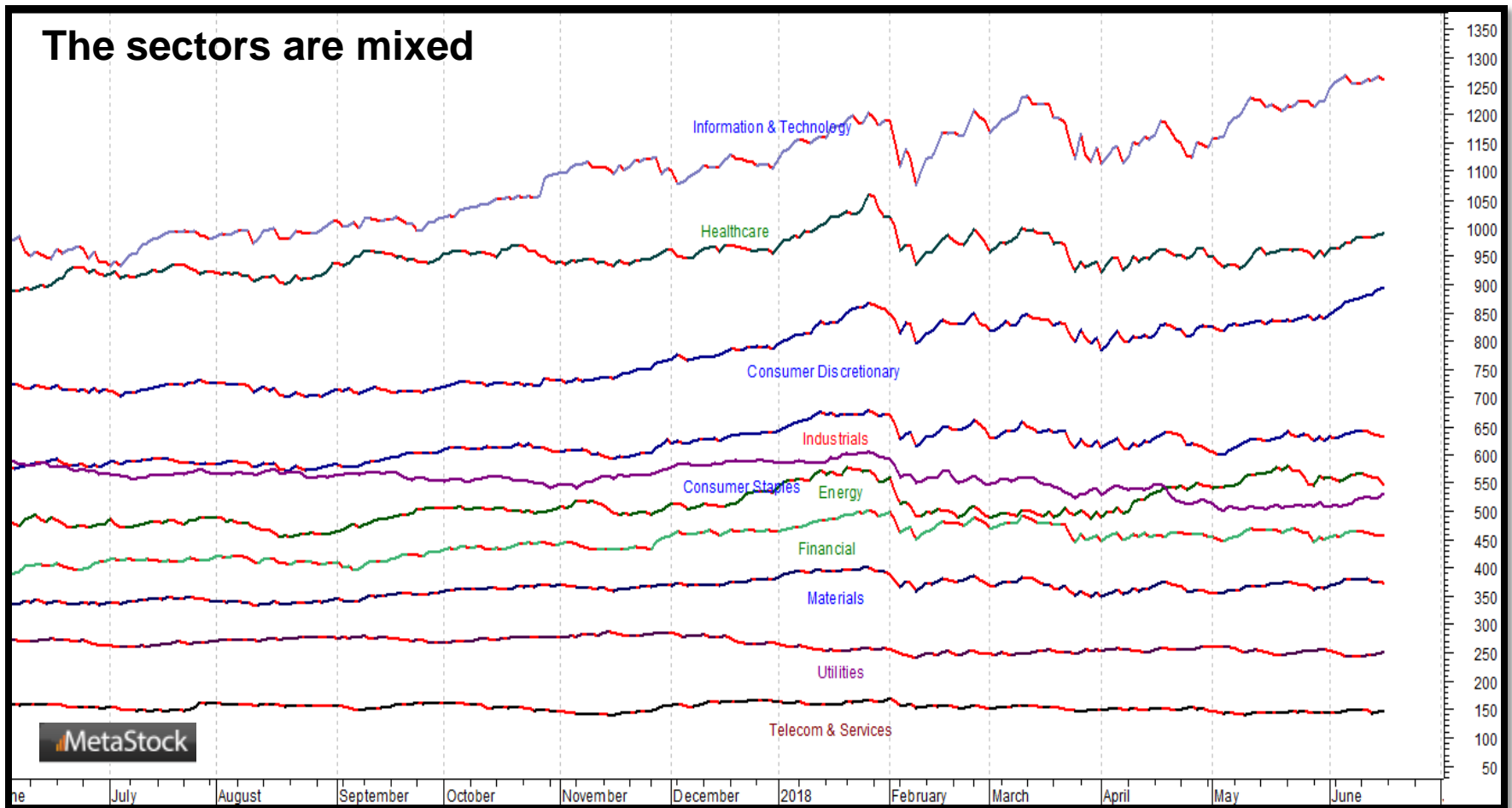
- The S&P 500's climb to a 3-month high was capped by the 76.4% Fib
- It is holding just above its 21-day EMA - downward risk
- All eyes should remain on the fallout from the Toronto G7 meeting, the US-China trade woes & Russia investigation
- Initial resistance: 2,793
- Further resistance: 2,873
- Immediate support: 2,743
- Further support: 2,703, 2,663, 2,554 & 2,532
- Fast stochastics: bearish
- MACD: slightly bearish



CQG Inc. © 2018 All rights reserved worldwide. <http://www.cqg.com>

Mon Jun 18 2018 12:52:20, CQG 18.12.8063

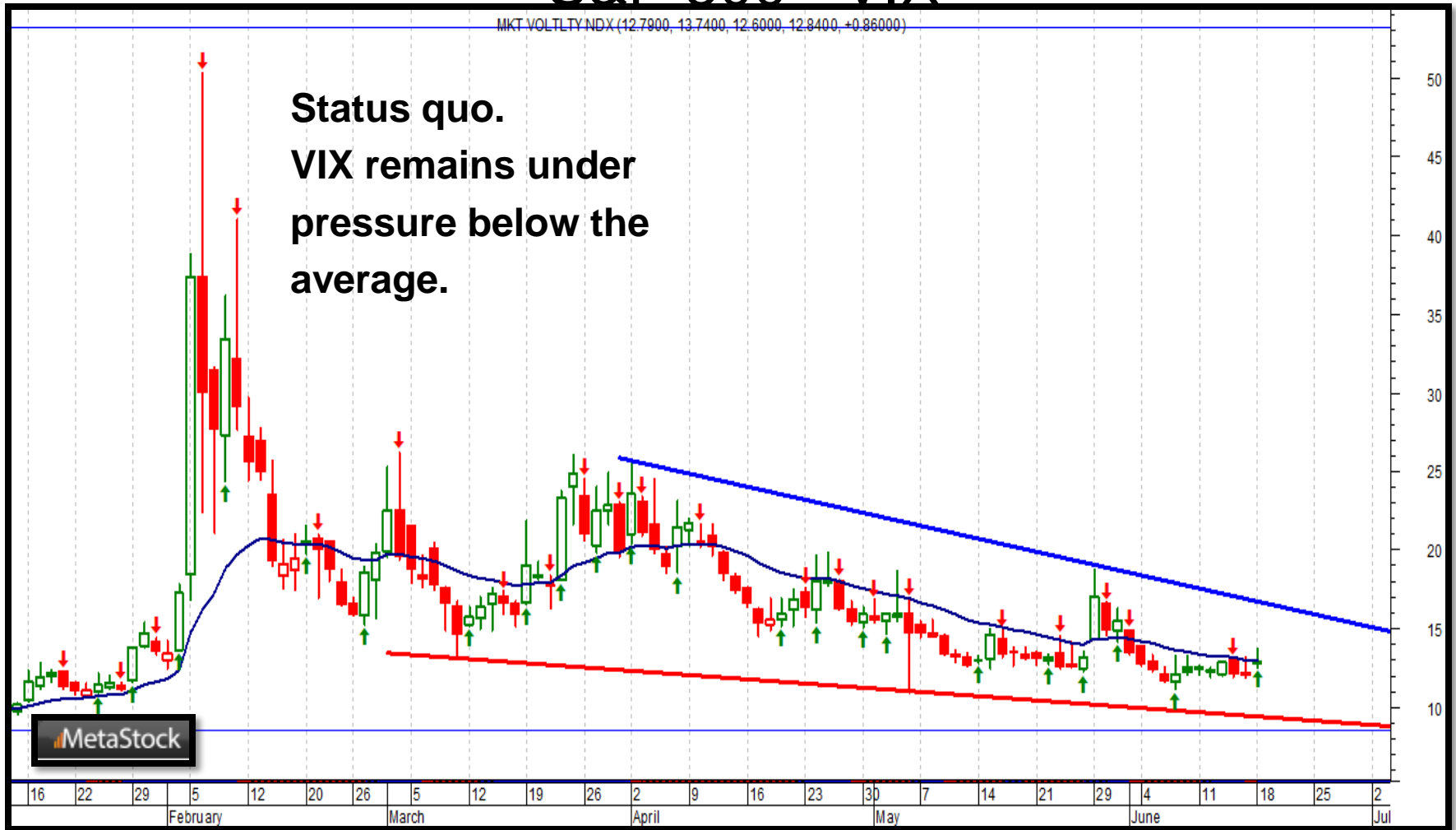
S&P 500 Sectors



S&P 500 - VIX

MKT VOLTLTY NDX (12.7900, 13.7400, 12.6000, 12.8400, +0.86000)

**Status quo.
VIX remains under
pressure below the
average.**



G7 Equity Index Trade Idea

Comment:

Short DAX while below the 21-day EMA

- The DAX failed to match its 4-month peak (5/22) and tumbled to just below both its 5- & 21-day EMAs
- If it also breaks below its trendline rising since April, the sell-off should accelerate
- Immediate support: 12,785
- Further support: 12,458 & 12,312
- Initial resistance: 13,133
- Further resistance: 13,597
- Fast stochastics: slightly bearish



BRIC Equity Indexes

Model Signals - Daily & Weekly

| <i>BRIC Index</i> | <i>Daily Model</i> | since | Daily Bias (> or < 21-day EMA) | Daily Risk | <i>Weekly Model</i> | since | Weekly Bias (> or < 21-week EMA) | Weekly Risk |
|-------------------|--------------------|--------|---|------------------|---------------------|--------|---|------------------|
| Brazil | S | 5-Jun | bearish | bearish | S | 17-May | bearish | bearish |
| Russia | S | 14-Jun | slightly bearish | bearish | S | 18-May | slightly bearish | slightly bearish |
| India | S | 14-Jun | slightly bullish | slightly bearish | L | 1-Jun | slightly bullish | slightly bullish |
| China-Shanghai | S | 14-Jun | slightly bearish | slightly bearish | L | 18-Jun | slightly bearish | slightly bullish |

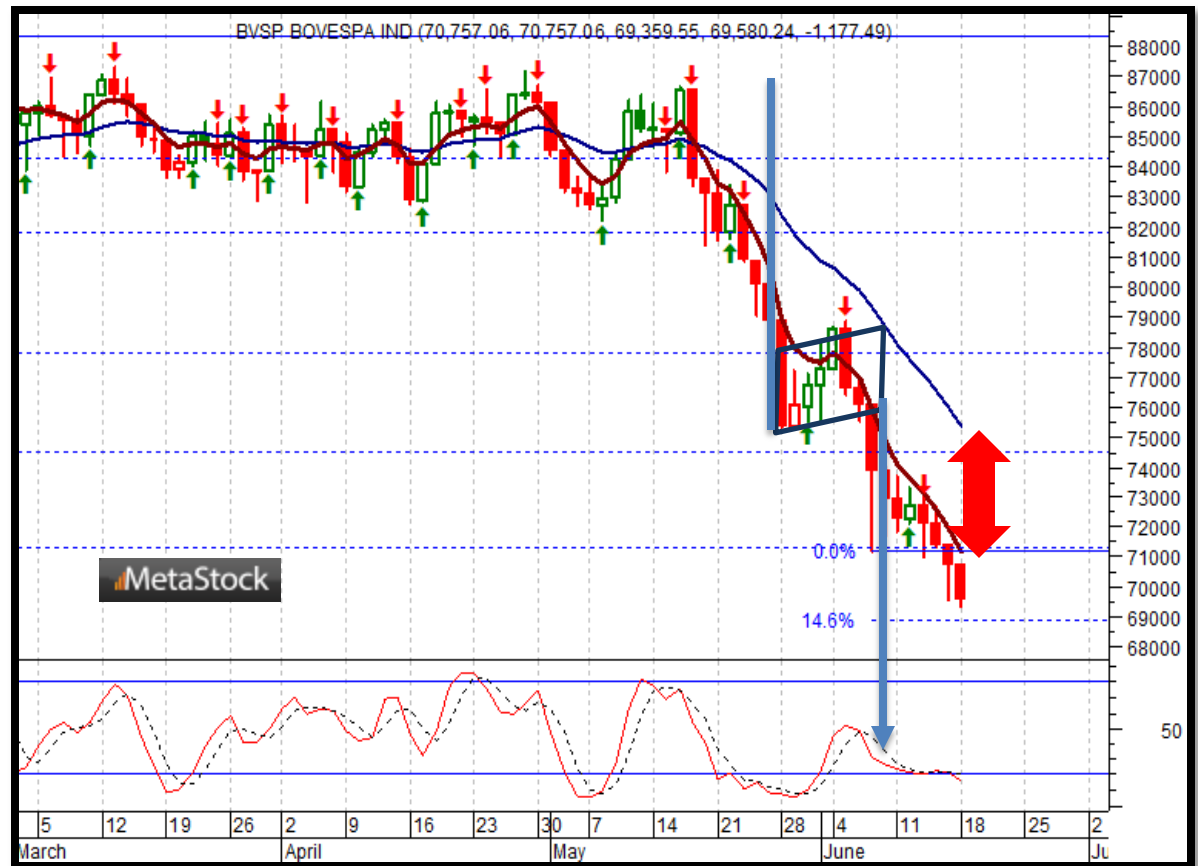
Source: Proprietary Luca Global Markets, LLC Model

BRIC Equity Index Trade Idea

Comment:

Short Brazil's Bovespa while below the 5-day EMA

- The Bovespa accelerated its losses to a 10-month low
- A very aggressive bearish flag seems to be in place; follow the Fibonacci steps
- It trades below both its 5- & 21-day EMAs (divergence)
- Immediate support: 68,945
- Further support: 67,560 & 65,333
- Initial resistance: 71,162
- Further resistance: 74,482 & 75,356
- Fast stochastics: bearish



How to Use the Heat Map

Bias: If the Candle > 21-period EMA = bullish
 If the Candle < 21-period EMA = bearish
 If the Candle around 21-period EMA = sideways

Long or Short

Since when

Risk: Bullish or Bearish
 Candle as of Monday am EST

| | Commodities | Daily Model | since | Daily Bias (> or < 21-day EMA) | Daily Risk | Weekly Model | since | Weekly Bias (> or < 21-day EMA) | Weekly Risk |
|--------|--------------------|-------------|--------|--------------------------------|------------------|--------------|--------|---------------------------------|------------------|
| Energy | Crude (CLc1) | S | 27-Apr | bullish | slightly bullish | L | 23-Mar | slightly bearish | slightly bullish |
| | Brent (LCOc1) | L | 21-Apr | slightly bullish | slightly bullish | L | 6-Apr | slightly bearish | slightly bullish |
| | Natural gas (NGc1) | S | 23-Apr | bearish | bearish | S | 20-Apr | bearish | slightly bearish |
| | Palm oil (FCPOc1) | L | 24-Apr | sideways | neutral | S | 20-Apr | slightly bearish | slightly bearish |
| Metals | Gold (GCc1) | S | 24-Apr | bearish | bearish | S | 20-Mar | slightly bearish | slightly bearish |
| | Silver (SIc1) | S | 22-Apr | bearish | bearish | S | 24-Apr | bearish | bearish |
| | Platinum (PLc1) | S | 20-Apr | bearish | bearish | S | 20-Mar | bearish | slightly bullish |
| | Copper (HGc1) | L | 24-Apr | slightly bearish | slightly bullish | S | 24-Apr | slightly bearish | slightly bearish |
| Softs | Coffee (KCN5) | L | 24-Apr | sideways | neutral | L | 24-Apr | slightly bullish | slightly bullish |
| | Cocoa (LCCN5) | L | 23-Apr | bullish | bullish | L | 13-Apr | bullish | bullish |
| | Soy meal (SMN5) | S | 24-Apr | bearish | slightly bearish | S | 24-Apr | bearish | slightly bearish |
| | Wheat (WN5) | S | 24-Apr | bearish | slightly bearish | S | 24-Apr | bearish | bearish |
| | Corn (CN5) | S | 20-Apr | bearish | bearish | S | 6-Apr | bearish | bearish |

Source: Proprietary Luca Global Markets, LLC Model

L = long
 S = short