

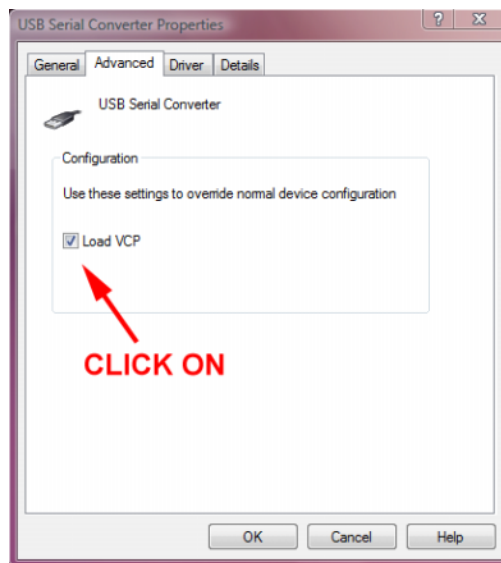
# Installing USB Drivers on Windows Vista Systems

## INTRODUCTION

Some customers have encountered problems installing the USB drivers on newer Windows Vista systems. As explained in the instructions for our devices requiring USB drivers, the installation consists of two steps: installing the USB bus driver and then installing the VCP (virtual COM port) driver. In some cases, the Windows Found New Hardware Wizard will fail to reappear after the initial USB bus driver installation and the second part of the driver installation process cannot be completed. The USB interface will not appear as a USB serial port under Ports (COM and LPT) on Device Manager or Ports (COM and LPT) may not appear at all on Device Manager. If this situation occurs, follow the steps below to force installation of the VCP driver.

## FORCING INSTALLATION OF THE VCP DRIVER

1. The Daytona Twin Tec/Daytona Sensors device with the USB interface **must** be connected to your PC. Most devices are self powered from the USB port. However, Daytona Sensors WEGO III/IV units will require 12 volt power for proper operation during USB driver installation.
2. Verify that the first step (USB bus driver) of the installation process has been completed. Go to Device Manager and scroll down to Universal Serial Bus controllers. Verify that USB Serial Converter appears under this category. If not, the first part of the installation has failed and you should refer to the FTDI Windows Installation Guide (in the USB\_Interface folder on the supplied CDROM) for step-by-step details troubleshooting details.
3. Click on the Advanced tab on the USB Serial Bus Converter Properties. Click on Load VCP as shown below.



4. Close Device Manager and disconnect the USB interface. Wait 30 seconds and reconnect the USB interface. The Windows Found New Hardware Wizard should reappear. Do not click on the option to connect to Windows Update. Click on the option to install from a specific location, click on the option to search for the best driver, and then browse to the VCP\_Drivers\_Win2KXP folder on the CDROM. Disregard any warnings about drivers that have not passed Windows Logo testing.
5. The wizard will complete installation of the VCP driver for the USB serial converter. You can then follow the COM port configuration procedure as explained in our USB interface installation instructions.
6. If the above steps fail to resolve your USB driver installation issues, we suggest that you visit [www.ftdichip.com/FTSupport.htm](http://www.ftdichip.com/FTSupport.htm) for further assistance.