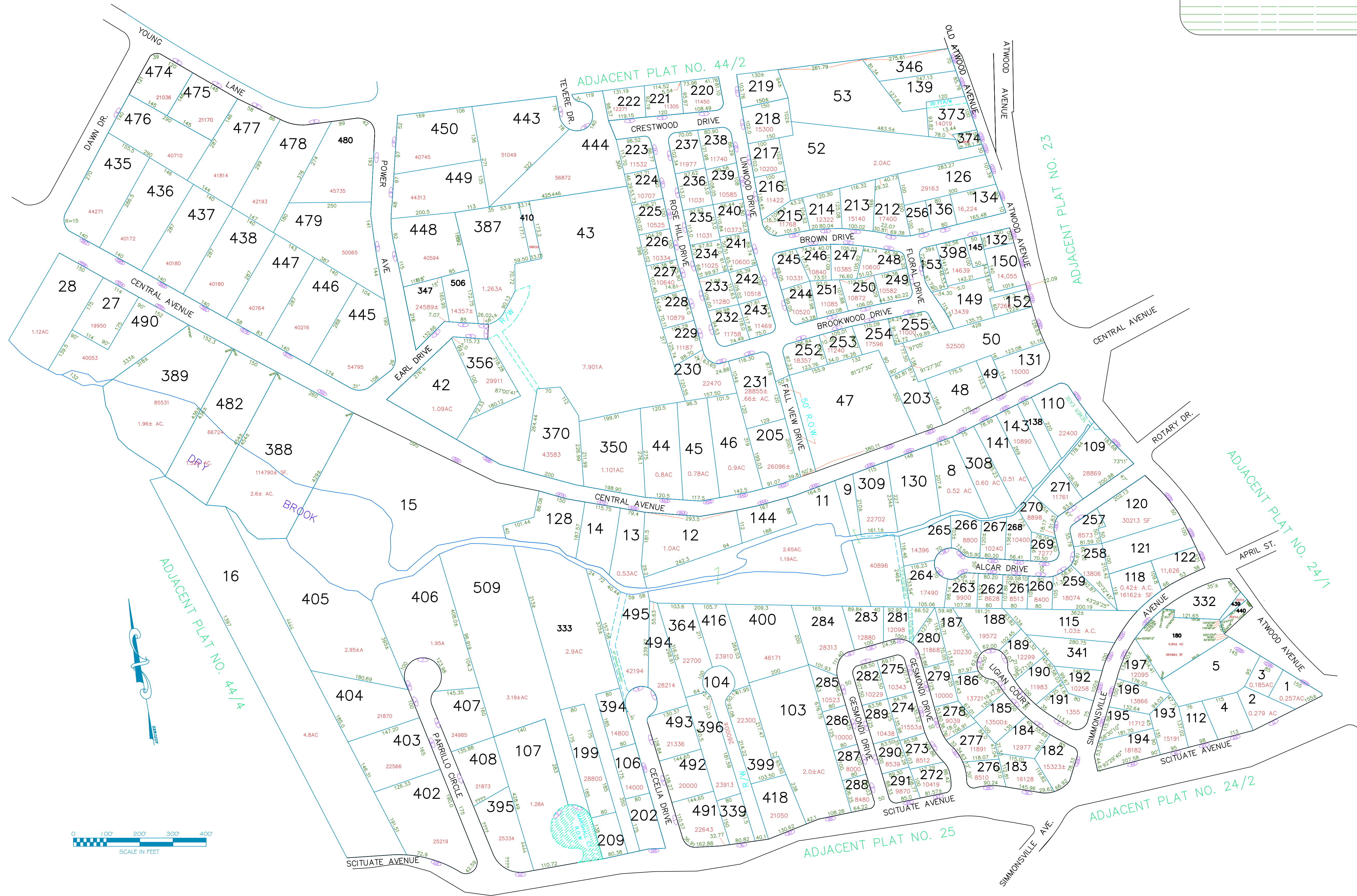


ASSESSOR'S MAP

SHOWING ZONING DISTRICTS

AMENDMENTS					
LOT(S)	FROM	TO	ORDIN. #	DATE	NOTE
134-135	R15	BI	586	9/9/85	
122,442	R15	BI	679	4/20/87	WITH STIP.
414	B-	I	796	9/11/89	Dropped to another AP
121	R15	BI	2014-4	03/10/2014	With Regulations



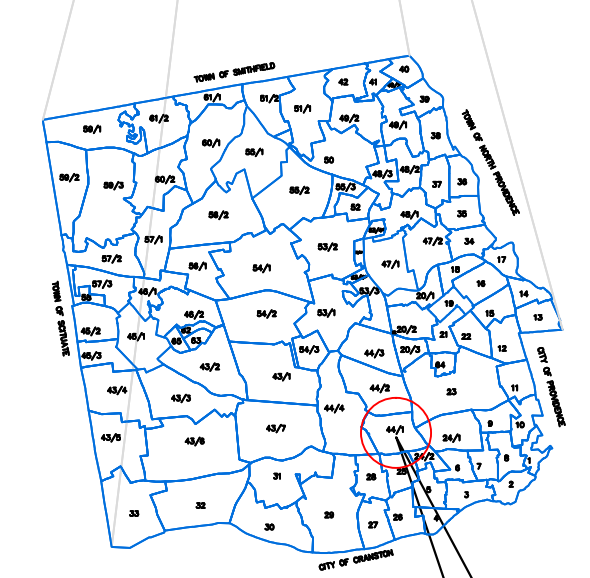
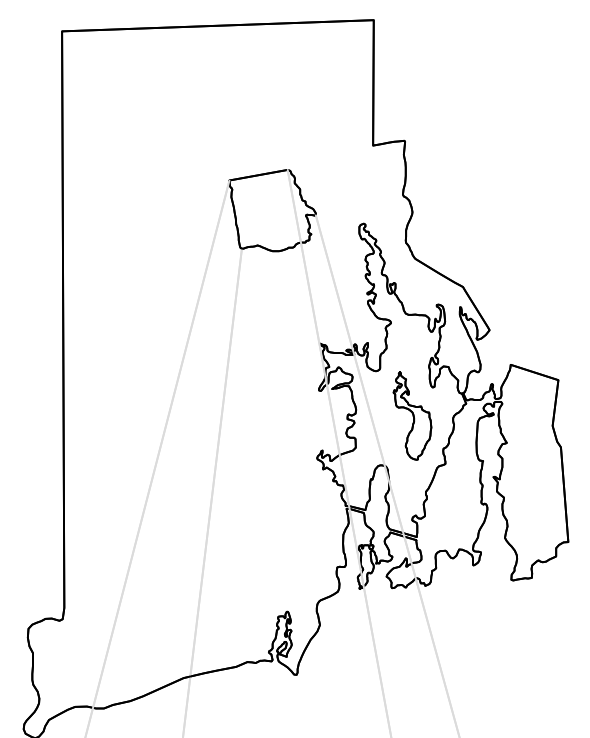
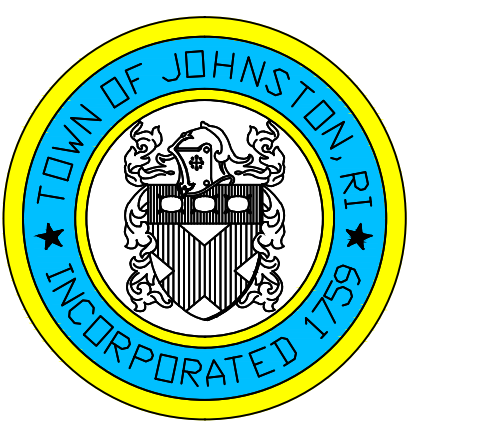
Assessor's Plat Number

44/1

STATE OF RHODE ISLAND
TOWN OF JOHNSTON

PROVIDENCE COUNTY
INCORPORATED 1759

ASSESSOR'S OFFICE
1385 HARTFORD AVENUE
JOHNSTON, RHODE ISLAND
02919



PLAT INDEX
AREA

Scale: 1:150

Revised By: Benjamin Ng

Last updated: January 04, 2016

Date printed: January 04, 2016

For copies of plat maps, please go to the DPW at 100 Irons Avenue Johnston Rhode Island. Thank you.

NOTE: This map was prepared for the use of the Town of Johnston for assessment and illustrative purposes only. It does not represent a survey of the premises. No liability is assumed as to the sufficiency or accuracy of the data delineated hereon.