

**Rabbit Anti-Cytokeratin 8/18 [EP17/EP30]: RM0066, RM0066RTU7**

**Intended Use:** For Research Use Only

**Description:** Cytokeratin 8 (CK8) is an intermediate filament protein produced early in embryogenesis. It is the only type-II CK occurring in many simple epithelial cells in respiratory, gastrointestinal, male and female reproductive tracts, and thyroid. CK8 is often co-expressed with Cytokeratin 18. CK8/18 is the major keratin pair in simple-type epithelia, as found in the liver, pancreas, and intestine. The CK8 antibody is used to detect adenocarcinomas of simple epithelium origin. The difference in staining pattern is useful to distinguish ductal (peripheral staining) from lobular (perinuclear staining) breast carcinoma. Cytokeratin 18 (CK18) is an intermediate filament phosphoglycoprotein that is expressed in simple and glandular and transitional epithelial cells, but not in stratified epithelial cells. CK18 is often co-expressed with CK8. CK8/18 is the major keratin pair in simple-type epithelia. Adenocarcinomas originated from simple and glandular epithelium showed CK18 positive staining. In squamous carcinoma, poorly differentiated tumor cells show CK18 reactivity. Loss of CK 18 expression is associated with progression of breast carcinoma.

**Specifications:**

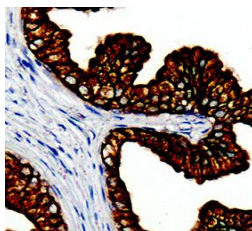
Clone: EP17/EP30  
 Source: Rabbit  
 Isotype: IgG  
 Reactivity: Human  
 Localization: Cytoplasm  
 Formulation: Antibody in PBS pH7.4, containing BSA and  $\leq 0.09\%$  sodium azide (NaN<sub>3</sub>)  
 Storage: Store at 2°- 8°C  
 Applications: IHC  
 Package:

Description	Catalog No.	Size
Cytokeratin 8/18 Concentrated	RM0066	1 ml
Cytokeratin 8/18 Prediluted	RM0066RTU7	7 ml

**IHC Procedure\*:**

Positive Control Tissue: Colon, colon cancer  
 Concentrated Dilution: 50-200  
 Pretreatment: Citrate pH6.0, 15 minutes using Pressure Cooker, or 30-60 minutes using water bath at 95°-99°C  
 Incubation Time and Temp: 30-60 minutes @ RT  
 Detection: Refer to the detection system manual

\* Result should be confirmed by an established diagnostic procedure.



FFPE human colon carcinoma stained with anti-CK8/CK18 using DAB

**References:**

1. Capturing tumor complexity in vitro: Comparative analysis of 2D and 3D tumor models for drug discovery. Stock K, et al. Sci Rep 6:28951, 2016.
2. Keratin 13 Is Enriched in Prostate Tubule-Initiating Cells and May Identify Primary Prostate Tumors that Metastasize to the Bone. Liu S, et al. PLoS One 11:e0163232, 2016.
3. Oblongifolin C inhibits metastasis by up-regulating keratin 18 and tubulins. Wang X, et al. Sci Rep 5:10293, 2015.

Doc. 100-RM0066  
Rev. A