

THE HANUKKAH COMET

The purpose of this illustration is to ascertain the trajectory of COMET LOVEJOY with the Moon Phases during Hanukkah 2011. It is to see if there is any correlation to the Christchurch, NZ earthquakes that starting on Dec 23. These 2 timelines are superimposed with each other. The Comet timeline is fixed on Dec 16; the Hanukkah timeline is fixed on Dec 20. These timelines appear to converge at a cortex where Lovejoy intersects the Sun at the Ecliptic. The Center Stem of the Menorah Pattern occurs on Christmas Eve in conjunction with a Full Moon and the Planet Pluto, God of the Underworld (Lucifer). The Moon also passed the same coordinates 7 days later, it is exactly at the time earthquakes started happening in Christchurch, NZ as the Feast of Hanukkah was observed. There is also a 3rd timeline from the lighting of the Hanukkah Menorah on Dec 8, 2011. There appears to be a series of 7-weeks that brings the day count to Jan 26, 2012. This date is 3 days after start of the Year of the Dragon New Year. Is the Dec 8, 2011 'lighting' ceremony that perhaps unlocked a countdown to 'unleashing the Phoenix'? Is the 'Hanukkah' Comet pegged to the NZ earthquakes? The comet does portray a Islamic 'sword' sign, a warning of Muslim omens soon to come upon the Church of Christ with much death and bloodshed because of it.

COMING PERSECUTION OF CHRIST'S CHURCH

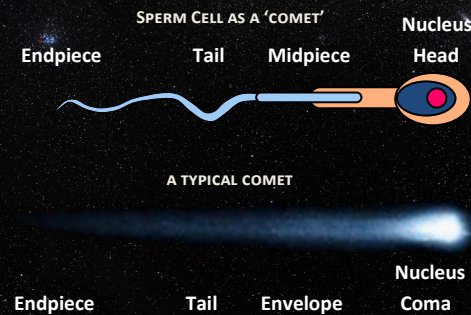
OBSERVATIONS

Menorah is lit by U.S. President with truncated center "Servant" stem; all Menorahs usually have center stem accented. Dec 08 to Dec 15 = 7 Days. Sun crossed Milky Way center and converged at the Ecliptic with Comet Lovejoy producing a *Tau Cross*. It survived thus a Phoenix-effect. Sun and comet intersect at Star (c Oph Hip 85755) - Ophiuchus, the Man struggling with Serpent (Dragon) like a 'Phoenix' ascending up.

The Moon crossed the same exact point comet Lovejoy passed the Sun at 7 days earlier. Dec 16 to Dec 23 = 7 Days. Series of earthquakes rock Christchurch, NZ in S. Hemisphere where comet appears; as a sign -of a 'Islamic Sword' to divide and conquer - Arab Spring. Venus and Saturn are bookends to the celestial 'Menorah' pattern during the 8 Days of Hanukkah with Pluto at the Center Servant Stem. Comet bisects Menorah as 'sword' cutting Serpens and Scorpio's stinger in half. A possible prophetic harbinger of the crushing of the Serpent with its power of death?

C/2011 W3 (LOVEJOY)

It is a periodic comet. It was discovered on Nov 27, 2011 by an amateur astronomer Terry Lovejoy. The comet's perihelion took it through the Sun's corona on Dec 16, 2011 above the Sun's surface. Comet Lovejoy survived its close encounter with the Sun. It was not expected to survive, but emerged from the corona intact -thus having a 'Phoenix-effect'. Many comets plunge into the Sun, but most are small, no more than 10m wide. It was thought at such a close proximity to the solar heat would have destroyed it but it actually came out with a larger tail, one of the largest in recorded history.

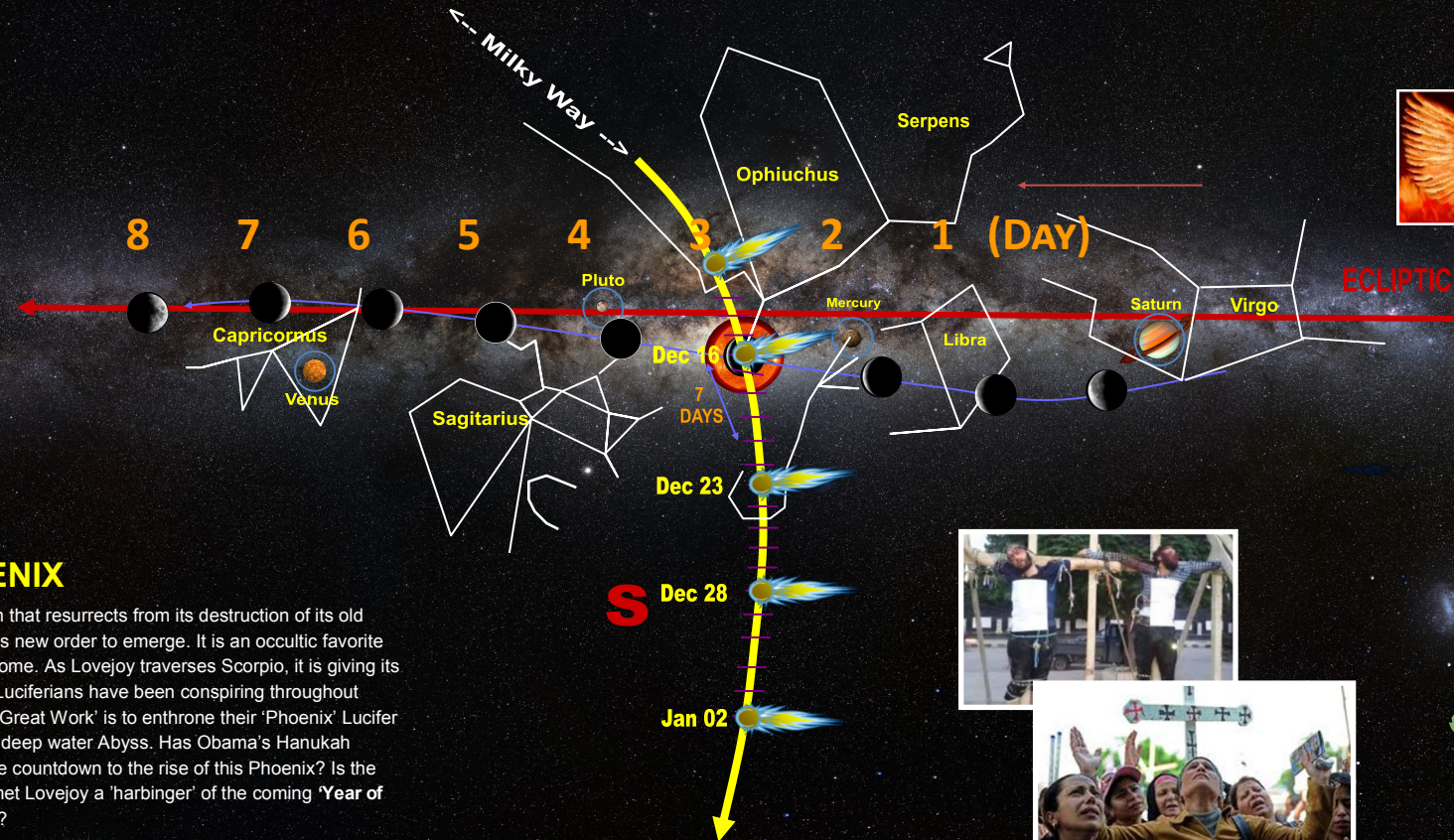


THE PHOENIX

A mystical bird/dragon that resurrects from its destruction of its old creation; needed for its new order to emerge. It is an occultic favorite symbol of what is to come. As Lovejoy traverses Scorpio, it is giving its Phoenix powers that Luciferians have been conspiring throughout human history. Their 'Great Work' is to enthrone their 'Phoenix' Lucifer or Leviathan from the deep water Abyss. Has Obama's Hanukkah ceremony signaled the countdown to the rise of this Phoenix? Is the Phoenix-effect of Comet Lovejoy a 'harbinger' of the coming 'Year of the Dragon' 50 days?

Biblically, 49/50 days is a connotation for *anointing and indwelling* as in Pentecost. Such celestial signs are 'harbingers' of the beginning of the change of the Old Order (USA) to implode and see the New World Order (NWO) emerge from its ashes. Does Comet Lovejoy that plunged into the Sun to its destruction but comes out anew soaring vigorously imply that so too someone or something is soon to follow with an 'indwelling and anointing'?

Comet Lovejoy at its approach to the Sun created a (T) or *Tau-Cross* image. Comets flare up as they approach the sun. This phenomena or effect is called is called *Pixel Flare*. Lovejoy is one of the brightest comets ever recorded. The Comet will continue toward Orion's Belt on April 4-11, 2012 -Passover.

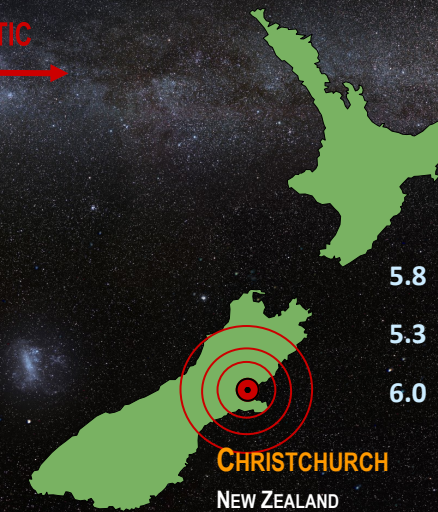


'to Resurrection of Orion'



SHAKING-UP THE 'CHURCH'

Some suggest that the comet Lovejoy resembles an *Islamic Sword*. Many attribute this as a sign that there will be major upheaval in the Muslim world, i.e., the Arab Spring. The comet will remain visible just before dawn until mid-January as it makes its way down the Milky Way in the Southern Hemisphere where there have been a series of earthquake activity in Christchurch, NZ. The earthquakes started on Friday Dec 23, 2011. There was a 5.8 quake, then a 5.3 aftershock; an hour later a 5.8 one (USGS); later changed to a 6.0. It is being reported that 1 in 10 are set to leave the city for good as Christchurch locals described the quake as 'violent'. Experts say quakes in the region will continue for the next 3.5-4 years to come.



COMET LOVEJOY

A SIGN OF AN ISLAMIC SWORD TO DIVIDE AND CONQUER AND PERSECUTION OF CHRIST'S-CHURCH IN THE MIDDLE EAST

© Composition & Some Graphics by

LUIS B. VEGA

vegapost@hotmail.com

www.PostScripts.org

FOR ILLUSTRATION PURPOSES ONLY

MAIN SOURCES

AstroBob.AreaVoices.com

Jewels2012Ascend.blogspot.com

JWeekly.com

UniverseToday.com

Wikipedia.com

