

Mouse Anti-Involucrin [IVRN/827]: MC0823, MC0823RTU7

Intended Use: For Research Use Only

Description: It recognizes a protein of 66kDa-170kDa, identified as involucrin. In Western blotting of cultured human keratinocytes, this MAb reacts with a 120kDa protein. Involucrin is expressed in a range of stratified squamous epithelia, including the cornea, which lacks a distinct cornified layer. In normal epidermis, it is first expressed in the upper spinous layers, and in keratinocyte cultures, all cells that have left the basal layer express it. Involucrin expression is altered in pathological conditions: in psoriasis and other benign epidermal hyperplasias, involucrin expression begins closer to the basal layer than normal; expression is abnormal in squamous cell carcinomas and premalignant lesions, and is reduced in severe dysplasias of the larynx and cervix.

Specifications

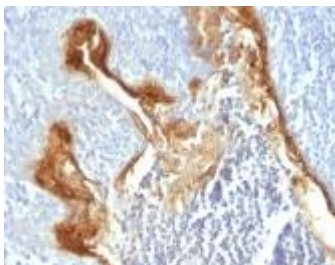
Clone: IVRN/827
Source: Mouse
Reactivity: Human
Isotype: IgG1k
Localization: Cytoplasm
Formulation: Antibody in PBS pH7.4, containing BSA and $\leq 0.09\%$ sodium azide (NaN₃)
Storage: Store at 2°- 8°C
Applications: IHC, Flow Cyt., ICC/IF
Package:

Description	Catalog No.	Size
Involucrin Concentrated	MC0823	1 ml
Involucrin Prediluted	MC0823RTU7	7 ml

IHC Procedure*

Positive Control Tissue: Upper spinous and granular layers in normal skin
Concentrated Dilution: 50-200
Pretreatment: Digestion with trypsin or protease XXV at 1mg/ml PBS for 5 min at 37°C
Incubation Time and Temp: 30-60 minutes @ RT
Detection: Refer to the detection system manual

* Result should be confirmed by an established diagnostic procedure.



FFPE human tonsil stained with anti-Involucrin using DAB

References:

1. Expression of E-cadherin and involucrin in leukoplakia and oral cancer: an immunocytochemical and immunohistochemical study. Silva AD et al. Braz Oral Res., 2017.
2. Is Ki-67, keratin 16, involucrin, and filaggrin immunostaining sufficient to diagnose inflammatory linear verrucous epidermal nevus? A report of eight cases and a comparison with psoriasis vulgaris. Peng J et al. An Bras Dermatol, 2017.
3. Downregulation of involucrin in psoriatic lesions following therapy with propylthiouracil, an anti-thyroid thioureydene: immunohistochemistry and gene expression analysis. Gnanaraj P et al. Int J Dermatol, 2015.

Doc. 100-MC0823
Rev. A