

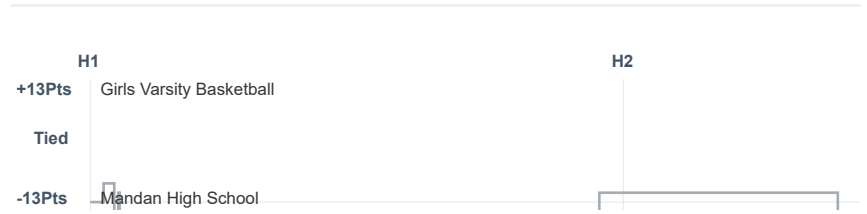
# Box Score Report

TMHS @ Mandan - Jan 26, 2023 - L 59-66

## Period Stats

Team	1	2	Final
TMHS	27	32	59
MHS	26	40	66

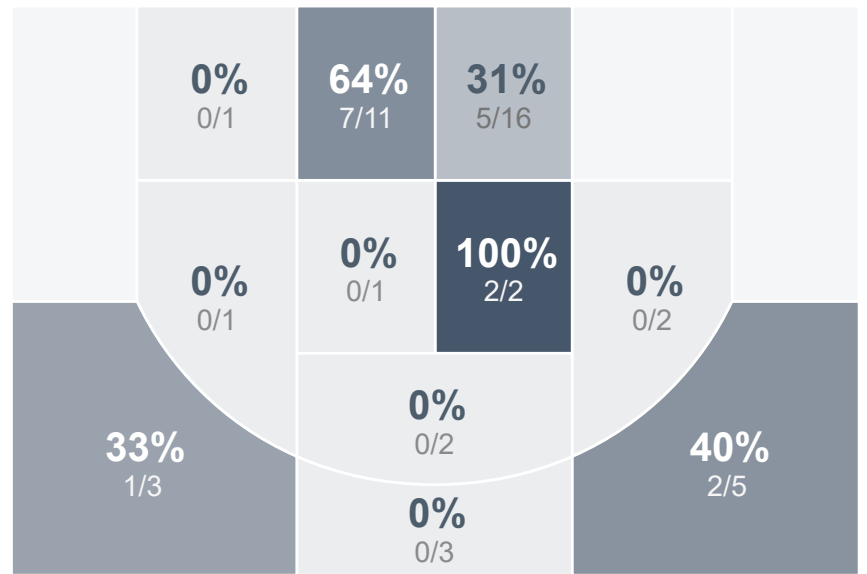
## Run Graph



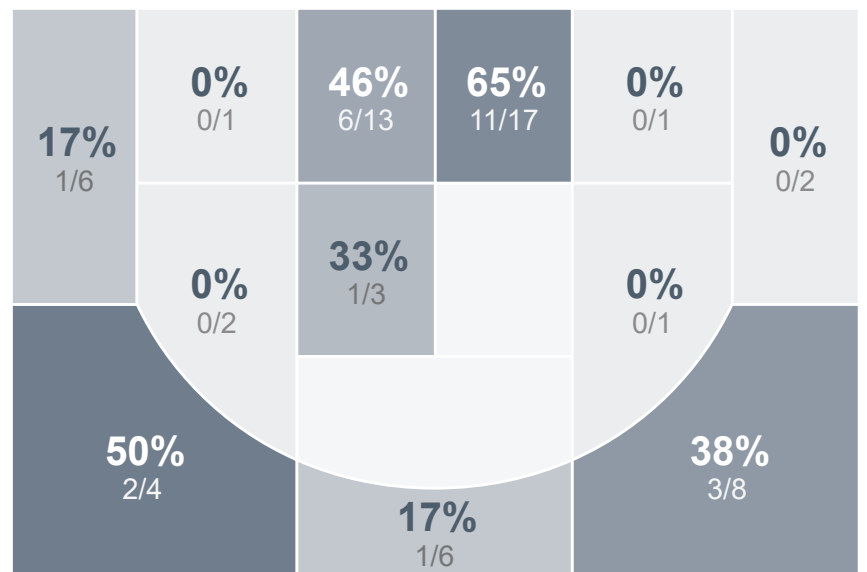
## Team Stats

	TMHS	MHS
Field Goal %	36.2%	39.1%
Effective Field Goal %	39.4%	44.5%
2FG Made/Attempted	14/36	18/38
2FG%	38.9%	47.4%
3FG Made/Attempted	3/11	7/26
3FG%	27.3%	26.9%
FT Made/Attempted	22/33	9/22
Free Throw Percentage	66.7%	40.9%
Points Per Possession	0.76	0.85
Transition Points	2	13
Points Off Turnovers	15	10
Second Chance Points	5	11
Points in the Paint	28	36
Offensive Rebounds	7	18
Defense Rebounds	25	28
Assists	13	20
Deflections	17	8
Steals	13	12
Blocks	0	2
Turnovers	22	21
Personal Fouls	22	24
Charges Taken	0	5

## Girls Varsity Basketball



## Mandan High School



## Girls Varsity Basketball's Player Stats

Name	Pts	FG	3FG	FT	+/-	MINS	OREB	DREB	AST	DEFL	STL	BLK	TO	FOUL	CHG
#1 Amya Gourneau	20	5/15	2/4	8/12	- 5	36	1	3	9	2	4	0	7	5	0
#5 maddison patneaud	0	0/2	0/0	0/0	- 3	2	0	0	0	0	0	0	2	1	0
#10 Irelei Zerr	4	2/3	0/0	0/0	- 4	20	0	2	0	4	2	0	2	4	0
#12 Giselle Vandal	0	0/1	0/1	0/0	+ 3	6	0	1	0	1	1	0	1	0	0
#24 Akealyes Azure	8	2/5	0/0	4/7	- 10	30	1	1	0	1	1	0	3	0	0
#25 Sydnee Bruce	0	0/2	0/1	0/0	- 6	34	0	3	3	4	1	0	2	4	0
#32 Emberlyn Poitra	11	5/7	0/0	1/2	- 15	24	4	4	0	2	3	0	3	3	0
#33 Tiyahna Trottier	16	3/12	1/5	9/12	+ 5	28	1	7	1	3	1	0	2	5	0

## Mandan High School's Player Stats

Name	Pts	FG	3FG	FT	+/-	MINS	OREB	DREB	AST	DEFL	STL	BLK	TO	FOUL	CHG
#5 Mya Sheldon	14	4/8	2/5	4/7	+ 5	28	2	5	6	1	1	1	3	4	3
#10 Sarah Helderop	2	1/9	0/5	0/2	+ 7	24	1	0	3	0	3	0	3	3	0
#12 Savannah Gustavsson	0	0/0	0/0	0/1	- 5	4	0	1	0	0	0	0	0	1	0
#14 Jayden Wiest	8	3/12	2/8	0/4	+ 1	30	0	4	9	1	3	0	5	4	1
#22 Anna Lyles	8	3/6	1/2	1/2	+ 9	17	1	3	1	1	0	0	2	0	0
#23 Kimimila McAllister	5	2/3	1/2	0/0	+ 7	8	1	0	0	0	1	0	2	2	0
#25 Harper Harris	2	1/4	0/1	0/0	+ 17	14	1	1	1	1	1	0	2	2	1
#35 McKenna Johnson	9	4/11	0/2	1/2	- 13	22	5	4	0	1	1	1	1	3	0
#42 Dani Hale	4	1/4	1/1	1/2	+ 1	18	1	2	0	0	1	0	1	1	0
#50 Madysen Schwind	14	6/7	0/0	2/2	+ 6	16	3	2	0	3	1	0	1	4	0