

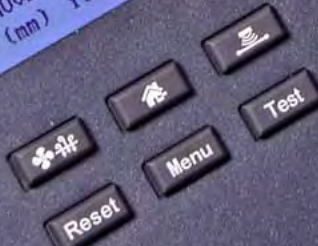
FLATBED CUTTING & CREASING

ON UP TO 600 MICRON BOARDS & SYNTHETICS



colorcut FB700 Digital Die Cutter

MOVE X216
(mm) Y8



FLATBED
SYSTEM



OPTICAL
SENSING



VACUUM
TABLE



2.2lb FORCE
DUAL TOOLING



SOFTWARE
INCLUDED

Cut absolutely any shape ColorCut flatbeds

Beautifully engineered, totally accurate and highly affordable. The Intec ColorCut flatbed series sets the new industry standard.

Perfect for light to medium run production of two and three dimensional items, the ColorCut series offers a range of machines to suit the cutting and creasing of virtually any form of print, from cardboard packaging for high-end products and protective cartons – to synthetic point-of-sale items and kiss-cut adhesive labels. The ability to produce single items on demand, also makes the ColorCut perfect for prototyping.

Bespoke, market-leading software ships as standard and brings many advanced features to aid design and production.

Flatbed cutting & creasing



No matter whether you produce 2D point-of-sale and labels or 3D packaging and displays – ColorCut flatbed cutting tables will perform effortlessly, and on demand.

Labels and P.O.S.

ColorCut flatbeds come complete with a selection of cutting blades to suit a wide range of materials including lightweight papers, cards, and synthetic substrates. In conjunction with the self-healing cutting mat, the flatbed produces perfect kiss-cut labels, interior and exterior point-of-sale, novelty greetings cards.

Cartons and packaging.

A set of circlip blades is also included with every flatbed, making it suitable for use with heavier-weight materials. Using the felt cutting mat, enables these blades to perform at their best to produce superb creasing, crisp cutlines and perforations for heavier-weight items such as luxury product packaging, gift boxes, utility packing and much more.



Card & film up to 600 micron
A productive 3.28 linear feet in 1.4 seconds
Cut, crease, perforate and score
100% digital - no dies required
Wide choice of models from 12"x17" to Arch D cutting tables



FB520e

FB520

FB700

FB900

FB1060

Seriously better. ColorCut flatbed cutters

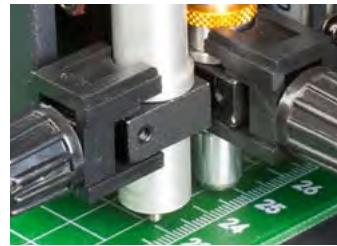
ColorCut flatbeds have been designed and developed to deliver the accuracy, speed, ease-of-use and reliability demanded by serious print professionals.

Intec Printing Solutions has invested in producing a class-leading system, which will keep pace with industry advancements and deliver *beyond* expectations. ColorCut owners are buying into a future-proof system that will not only evolve and grow with industry requirements - but deliver additional and unique profit-making opportunities.



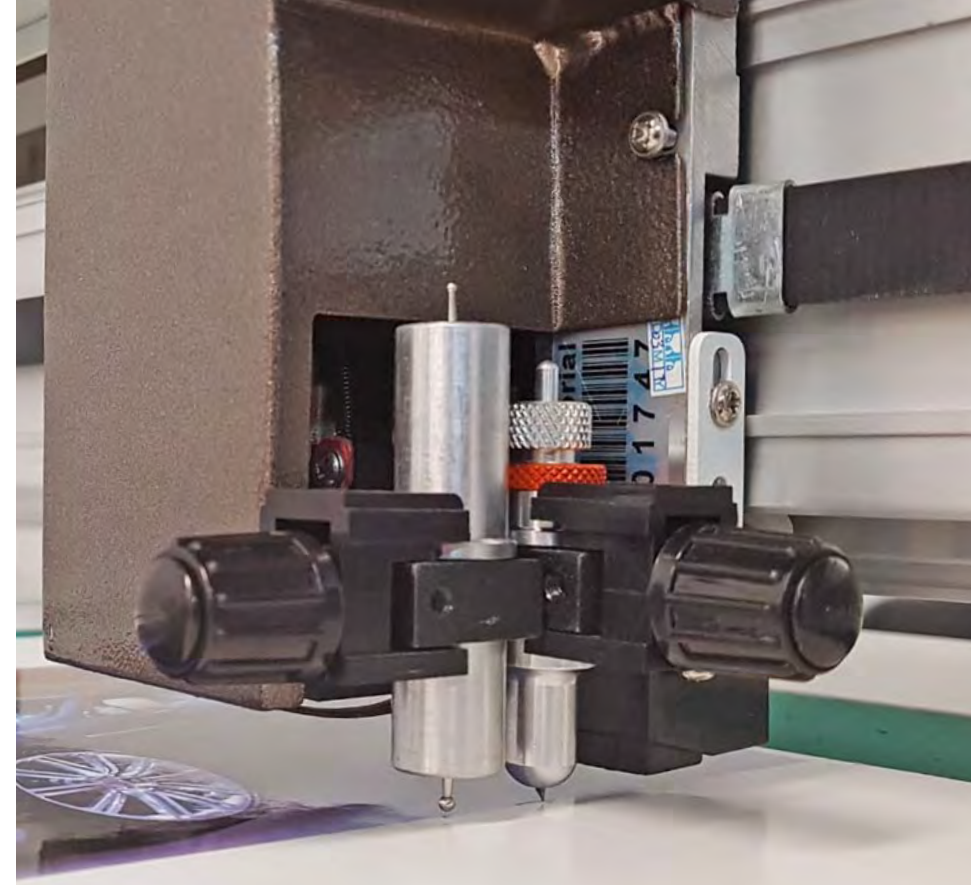
Growing range. With four models in the current line up, and plans for additional models offering unique features, the ColorCut flatbed range has a pedigree of solid fabrication, robust mechanical parts, high-tech electronics and simplicity of use - all at an extremely affordable price point!

Deliver on demand. Cuts a typical 12"x18" sheet in just 30 - 60 seconds.



This enables users to easily and affordably produce anything from as little as one, or as many as 1,000 sheets per day.

Digital die cutting. Using advanced digital contour cutting technology, the flatbed tools follow artwork cut and crease lines drawn in Adobe® Illustrator® or CorelDRAW® – no need to purchase and wait for traditional dies to be made.



Vacuum hold down table. Printed sheets are held securely in place on either a green self-healing, or grey felt cutting mat, by a vacuum which is produced by a powerful centrifugal pump. Suction passes through the perforated hold down table and the mat, keeping sheets flat and secure.

Optical sensor. Perfect registration of the printed sheets to the desired outline is guaranteed by presence of the optical sensor, which reads page marks and/or barcode (see software section), and enables the cutting head to follow the path of drawn vector lines.

Fingertip control. Intec has developed an intuitive and sophisticated control panel which integrates with the software.

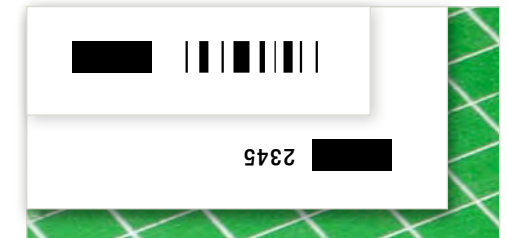
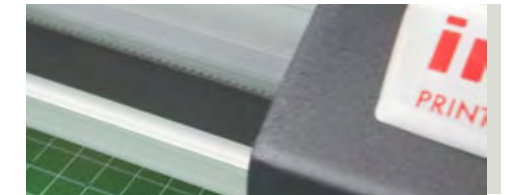
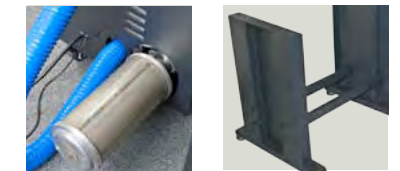
Dual tools with 1 pound force!

Delivering twice the pressure of other models in its class, ColorCut enhances productivity with accentuated folding lines as well as clean and crisp cut and 'perf' lines.

Both tools, in the dual tool head, operate independently for all functions, reducing operation time and improving productivity. The creasing tool is double-ended, offering a choice of wide or narrow crease, as required.

Batch productivity. Multiple sheets can be placed on the cutting mat and with the control settings designated to 'batch productivity', ColorCut will proceed to work on each sheet in turn - thus speeding productivity even further!

Pneumatic vacuum pump. All Intec ColorCut flatbeds come with an extremely powerful centrifugal air pump which provides the power to hold down printed sheets onto the cutting table. An auto cut-off feature announces the end of each cut sheet. The pump is housed within an attractive, purpose made acoustic housing and supplied with an effective muffler*.



Bespoke software. Offering key productivity features, ColorCut Pro software has been developed exclusively by Intec to deliver exactly the kind of user-experience we know the industry demands.

Job barcoding. The generation of job barcodes revolutionizes the production and filing process. ColorCut Pro can automatically create a barcode specifically dedicated to an individual cutfile and add it into the PDF file. When the flatbed sensor reads the barcode on the printed sheet, ColorCut Pro automatically pulls that file up on screen, ready for the cutter to do its work.



ColorCut flatbed users also have the option to work with SignMaster Pro software.

*muffler optional on FB520 model

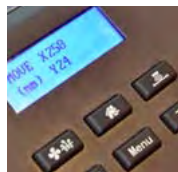
Uniquely ColorCut



1. Dual cutting tool head with class-leading 1kg force



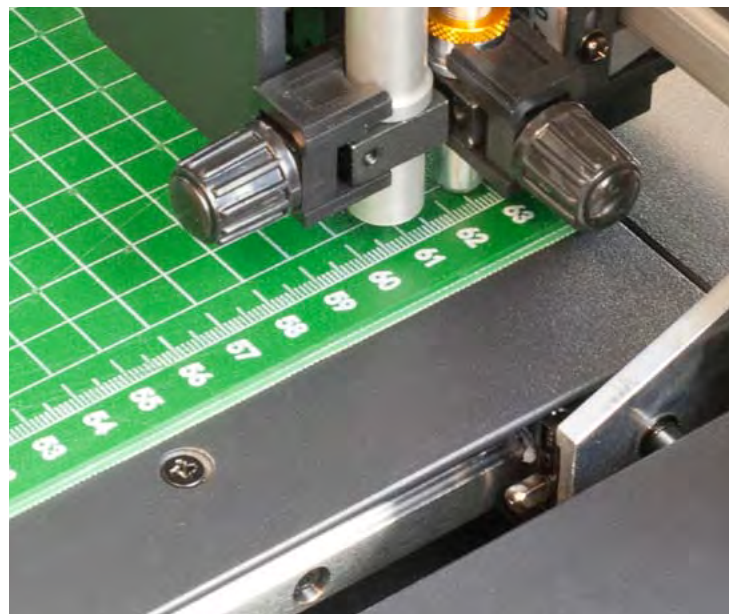
3. Hold down table with choice of cutting mats



2. Ergonomic and informative control panel



4. Job barcoding revolutionizes functionality and outline filing



Model selector

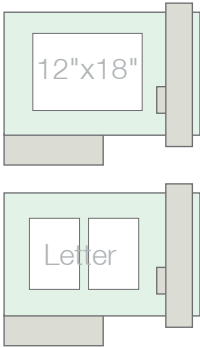
A flatbed to suit
all applications
ColorCut model options

Depending upon typical job type, run volumes and physical space, there's a ColorCut flatbed to suit virtually all users.

Full specifications can be seen on back page.



FB520

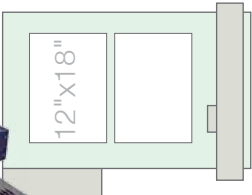


Market position Suitable for prototyping on-demand and light production work, the FB520 is also suitable for pairing with the ColorSplash digital printer, for production of 12"x18" sheet labels.

All flatbeds come with a double-ended creasing tool and an adjustable cutting tool - which accepts a range of blades for different mdeia types.

CUT AREA	FB520e	FB520
Maximum media area	13.77" x 20.47"	
Effective contour cutting area	12.99" x 19.21"	
Stand	Optional	Included
Media hold-down method	400W Vacuum suction	
Vacuum control	Fixed	
Acoustic cover for vacuum pump	Yes	
Silencer	Optional	
GENERAL FB520		
Cutting force	510gf	960gf
Weight unpacked	132 pounds	152 pounds
Dimensions* (unpacked) LxWxH†	34.17" x 29.96" x 40.15"	34.17" x 29.96" x 9.84"
Weight (crated)	204 pounds	224 pounds
Dimensions (crated) LxWxH	46.45" x 35.43" x 22.04"	
Software supplied	ColorCut	ColorCut Pro

FB700

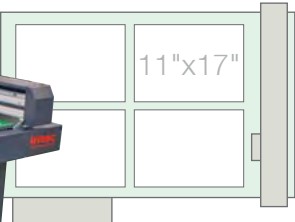


Market position With a larger cutting table, the FB700 can handle folders, and larger sheets. However, it's the combination of the aggressive price point along with the ability to place 2 x 12"x18" sheets next to each other (or 4x Letter), for light production applications, which enables users to achieve higher productivity. With less time taken placing sheets on the table, this cutter is currently the most popular in the range.

Also includes higher power 750W vacuum bed for a wider range of media, and an acoustic muffler to ensure the flatbed comfortably fits in any environment.

CUT AREA FB700	
Maximum media area	18.70" x 26.37"
Effective contour cutting area	17.95" x 25.19"
Stand	Included
Media hold-down method	750W Vacuum suction
Vacuum control	5 level variable power
Acoustic cover for vacuum pump	Yes
Silencer	Included
GENERAL FB700	
Cutting force	960gf
Weight unpacked	180 pounds
Dimensions* (unpacked) L x W x H†	38.89" x 39.88" x 40.15"
Weight (crated)	284 pounds
Dimensions (crated) L x W x H	54.72" x 40.94" x 22.04"
Software supplied	ColorCut Pro

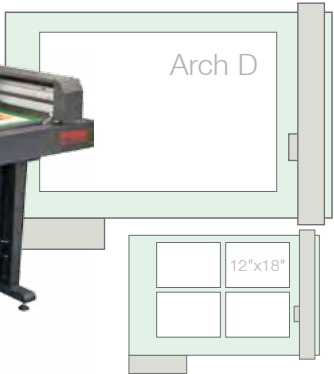
FB900



Market position The FB900 is popular where less time placing sheets on the table is essential or where cutting large format sheets is required. Sharing the high powered 750W vacuum table of the FB700 the FB900 enables 4 x 12"x18" sheets to be comfortably placed next to each other, or larger sheets from inkjet or printing press applications.

CUT AREA FB900	
Maximum media area	24.40" x 36.61"
Effective contour cutting area	23.62" x 35.43"
Stand	Included
Media hold-down method	750W Vacuum suction
Vacuum control	5 level variable power
Acoustic cover for vacuum pump	Yes
Silencer	Included
GENERAL FB900	
Cutting force	960gf
Weight unpacked	213 pounds
Dimensions* (unpacked) L x W x H†	44.88" x 45.25" x 40.15"
Weight (crated)	286 pounds
Dimensions (crated) L x W x H	55.90" x 51.18" x 22.04"
Software supplied	ColorCut Pro

FB1060

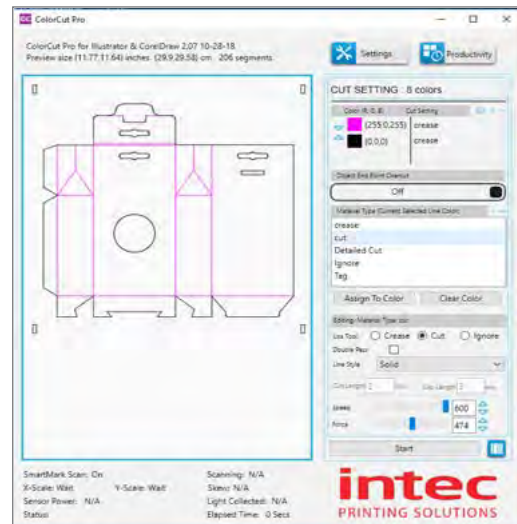


Market position The largest cutting table in the range, the FB1060 handles sheets up to 22.92" x 41.73" and has a maximum effective cutting area up to 29.13" x 40.94". Offering all the features of the smaller FB900, the FB1060 enables 4 x SRA3 sheets to be comfortably placed next to each other, or larger B1 sheets from inkjet or printing press applications.

CUT AREA FB1060	
Maximum media area	29.92" x 41.73"
Effective contour cutting area	29.13" x 40.94"
Stand	Included
Media hold-down method	750W Vacuum suction
Vacuum control	5 level variable power
Acoustic cover for vacuum pump	Yes
Silencer	Included
GENERAL FB1060	
Cutting force	510gf
Weight unpacked	240 pounds
Dimensions* (unpacked) L x W x H†	51.65" x 51.37" x 40.15"
Weight (crated)	363 pounds
Dimensions (crated) L x W x H	62.20" x 55.51" x 22.04"
Software supplied	ColorCut Pro

See full range specification table on back page

Note to all devices:
* Dimensions reflect full extremities of each device.
† Height to cutting table top surface 33.85". Height to top of beam = 40.15"
(Both height dimensions +/- .75" owing to adjustable feet).



Take full control with ColorCut Pro v2

What is ColorCut Pro? Intec has produced a suite of programs for all ColorCut flatbed cutting tables, developed to optimize their use and help users cut projects with absolute simplicity. It is included with all Intec flatbed cutting tables.

Software

ColorCut Pro explained

ColorCut Pro's main application fully integrates with the leading drawing packages - Adobe® Illustrator® and CorelDRAW®.

ColorCut Pro - barcode controller, is a stand alone application which enables users to cut previously prepared cut files, without the need to launch Adobe Illustrator or CorelDRAW, and can be used on remote PCs in production departments.

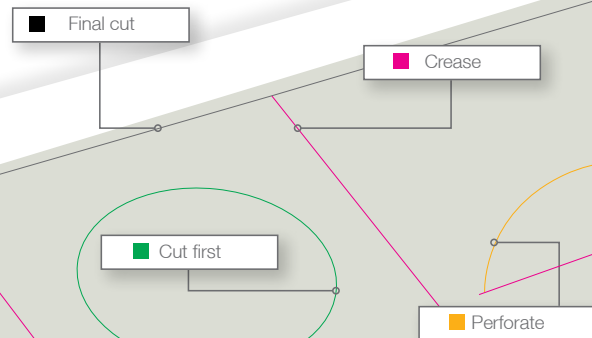
Software and hardware. Intec makes both the hardware and the software for all its range of ColorCut flatbed machines - everything is conceived to work together. The Intec flatbed mounted sensors can read registration marks and detect the position of cuts on the machine's table. ColorCut Pro has an advanced feature to compensate for print skew or positioning skew - effectively redrawing the artwork according to the error. This feature always ensures maximum precision when performing contour cuts. The sensors will also read barcodes applied to printed files, and retrieve the cutting lines from the ColorCut Pro job database, associated with the specific design.

What is Contour Cutting? Contour cutting involves placing a drawn outline around an object and using the Intec ColorCut flatbed to physically cut it.



Create. ColorCut Pro is fully integrated with Adobe Illustrator and CorelDRAW, allowing users to edit any designs, in their package, customize them and finally export them to use with ColorCut Pro.

Color recognition. Working with vector lines in the design, it is possible to set-up cutting/creasing processes using different line colors, this feature recognizes different colors and allows users to set types of operation and the sequence, by color.

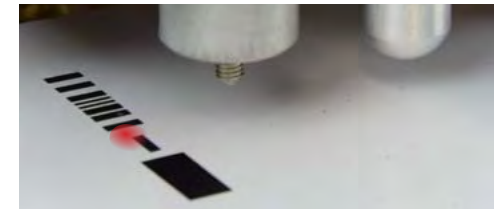


Making production tasks, easy!

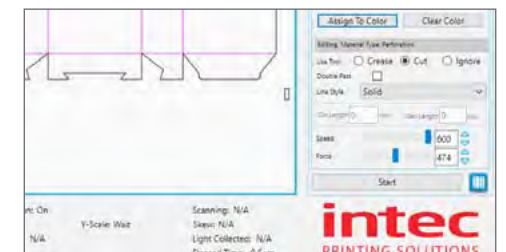
- No new drawing program to learn
- ColorCut Pro accepts vector lines directly from Adobe Illustrator & Corel Draw
- Line colors identification
- Material/Action Database
- Control cutting tool speed & force using SmartLine color
- Productivity mode enables multiple job cutting
- Generate and assign barcodes to jobs, saving the cutting file to the job database for retrieving later

- Plugin to add registration marks (and Barcodes) for Adobe Illustrator (MAC & PC), CorelDraw (PC)
- Can cut with registration marks or without
- Customisable registration mark position
- Automatic sensor calibration
- High tolerance to variation in brightness, for colored media or white marks on dark paper
- Software automatically adjusts for print scale, skew or position errors up to 5mm
- Automatically turns off vacuum after cutting
- Application environment works in mm or inches
- Working interface can be independent of your drawing program

colorcut Flatbed cutters



In addition, the stand-alone version of ColorCut Pro can be installed on different computers, enabling other team members to cut the jobs - perhaps in another location - simply by using the bar code of the assigned job number.



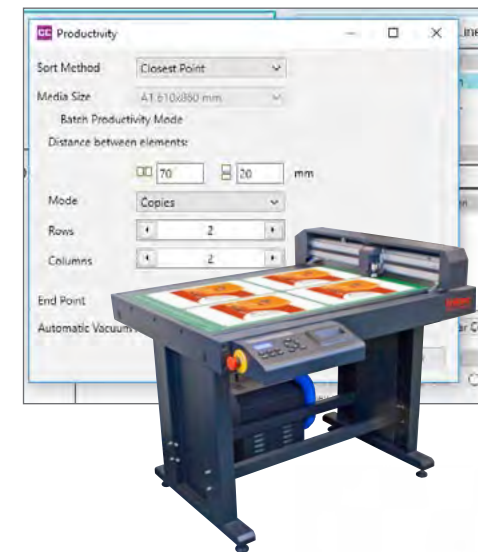
Smart line control. Solid lines can be overridden in designs, turning them into dashed lines, perforated cuts, or even small tags to hold designs into the cut sheet.

Click start. Once positioned on the first registration marks, the ColorCut sensor will automatically detect the 2nd, 3rd and 4th marks with the ColorCut Pro software, compensating for any scale, skew or position errors. Cutting will then start automatically.

How does ColorCut Pro work?

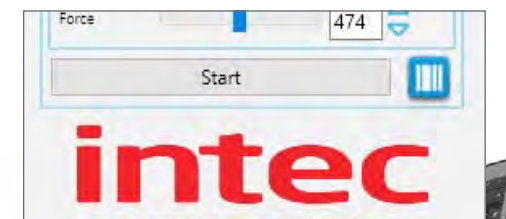
Productivity controls for production runs. Multiple sheets can be placed on the table at the same time and ColorCut Pro can be set to search for each sheet and cut it - improving productivity. For complex designs it is possible to change the cutting sequence and order.

Material database. It's possible to assign a tool (either cutting or creasing), along with tool speed and pressure for each action or material used. Settings can be saved so users can quickly and easily recall them for future jobs. Using the 'smart line' color from the design that has been recognized by ColorCut Pro, assign the material process (i.e. cutting 405g board or creasing).



Finding filed jobs using barcodes

The barcode function will generate a job number and the associated barcode for you. These can be placed on the design and the job saved to the job library, enabling faster retrieval of all cut files at a later date.





ColorCut Pro user manual supplied with all cutters and available to download from intecprinters.com

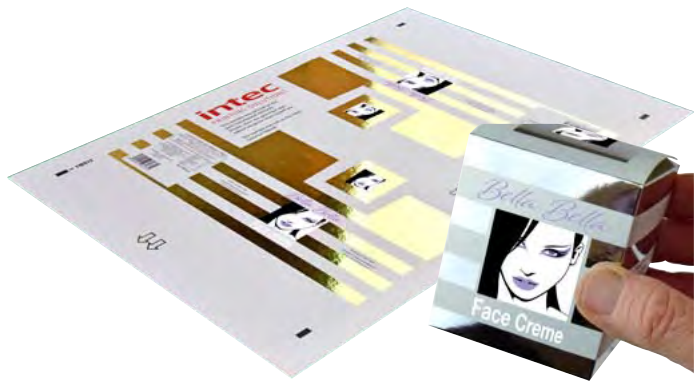


Dual tools head delivers 1kg of force per tool

Comprehensive range of tools and accessories ColorCut

As you'd expect from a serious production system, many of the parts are available as replacements.

A full range of original manufacturer parts and accessories are available for after-market purchase. Spares can be purchased at time of ordering the flatbed and/or shipped overnight as and when required.

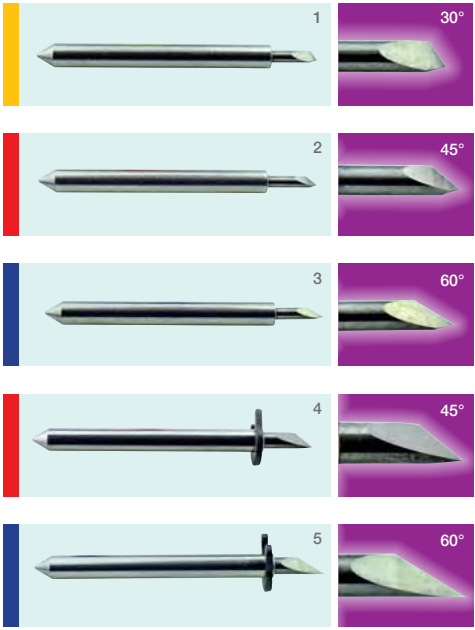


Tools & accessories

Stand. Fabricated from 2.5mm mild steel and powder coated to match the ColorCut bodies, the bespoke stand offers a perfect fit for all cutting tables and offers the correct working height.



SignMaster. The software traditionally used by many sign makers is also available as an option.



1. 30° blade 2. 45° blade 3. 60° blade
4. 45° circlip knife 5. 60° circlip knife

Creasing tool. This tool is double-ended, offering a choice of tips for either wide or narrow creases, as desired. Again, precision engineered this tools sits in the dual tool head.

Cutting tool. This precision engineered component sits in the dual tool head and holds the cutting blade of choice. The tool is manually adjustable to obtain the desired amount of 'blade out' for the job in hand.

Calibration tool. Used at set up and then periodically, to calibrate the cutter.



Cutting mats. Green self-healing mat is manufactured from a particular rubberized compound enabling blades to sink into its surface without causing surface damage. This mat is ideal for obtaining crisp cuts on thinner materials. Vacuum suction flows through the perforations to hold printed sheets in position.

The grey felt mat is perfect for achieving deeper creasing lines and cuts on thicker substrates. The natural density of the fibres allows the vacuum flow to pass through it for sheet retention.

Cutting blades. These ultra-sharp and hard-wearing blades come in two types and three blade angles. Either as a pack of three the same or as a mixed pack.

Blades:

Yellow 30° 1mm ø - For film, very soft material, thin label material

Red 45° 1mm ø - Typically for labels, stickers, and thin paper/card

Blue 60° 1mm ø - For thick media. Sharply angled tip provides a longer cutting edge, for cutting media from 0.5 to 1.5 mm thick

Circlip blades:

Red 45° 1.4mm ø - Most packing board up to 500 micron. Circlip provides better pressure and improves blade direction changes on dense media, from 0.25 to 0.5 mm thick

Blue 60° 1.4mm ø - For thick media. Sharply angled tip provides a longer cutting edge, for cutting media from 0.5 to 1.5 mm thick



Vacuum pump. Powerful 750W (400W on FB520 model) vacuum pump with mobile acoustic housing, powers vacuum retention of printed sheets to cutting mat.



Acoustic silencer. Reduces sound level of vacuum pump.

Specifications



Intec ColorCut Flatbed digital die cutter series

ColorCut Flatbed series		FB520	FB700	FB900	FB1060	
POSITION						
Market position		Prototype and light production, on-demand packaging and sheet card cutting system – also suitable for sheet labels				
CUT AREA						
Maximum media area	13.77" x 20.47"		18.70" x 26.37"	24.40" x 36.61"	29.92" x 41.73"	
Effective contour cutting area	12.99" x 19.21"		17.95" x 25.19"	23.62" x 35.43"	29.13" x 40.94"	
Model format	Desktop: Optional stand recommended		Desktop: Stand included	Large Format: Stand included	Large Format Pro: Stand included	
Media hold-down method	400W Vacuum suction		750W Vacuum suction	750W Vacuum suction	750W Vacuum suction	
Vacuum control	Fixed		5 level variable power	5 level variable power	5 level variable power	
Acoustic cover for vacuum pump	No		Yes	Yes	Yes	
CUTTING CONTROL						
Mountable tools		Dual tool functionality. 3 tools supplied as standard: Blade holder, creasing tool & pen tool				
Available tools	Blades:	Yellow - 1mm 30° cemented carbide blade - for thin film and very soft material				
		Red - 1mm 45° cemented carbide blade - for adhesive stickers, thin card under 0.25mm				
		Red - 1.4mm 45° circlip cemented carbide blade - for cutting media from 0.25 to 0.5mm thick				
		Blue - 1mm 60° cemented carbide blade - for thick media, sharply angled tip provides a longer cutting edge - suitable for cutting media from 0.5 to 1.5 mm thick (restricted by maximum limit of flatbed)				
		Blue - 1.4mm 60° circlip cemented carbide blade - for cutting high-intensity reflective film				
Creasing tool:		≤500gsm cardboard, textured & corrugated paper				
Pen holder:		Pen, plotting pen, also used for calibration sensor				
Cutting system		Contour knife cutting system, with up to 960gf delivered in 4g/step intervals through Intec ColorCut control panel				510gf delivered in 4g/step intervals
Mechanical resolution		0.01254mm	0.01254mm	0.01254mm	0.01254mm	
Programmable resolution		HPGL 0.025mm	HPGL 0.025mm	HPGL 0.025mm	HPGL 0.025mm	
Max cutting depth		0.60mm	0.60mm	0.60mm	0.60mm	
Max cutting weights		450gsm	450gsm	450gsm	450gsm	
Other substrates:		Paper/card less than 450gsm, PVC - less than 0.4mm, PET - less than 0.3mm, magnetic sticker - less than 600 micron				
Max speed		23.62" / sec	23.62" / sec	23.62" / sec	23.62" / sec	
SOFTWARE & CONNECTIVITY						
ColorCut Pro support		Yes (Mac and PC)	Yes (Mac and PC)	Yes (Mac and PC)	Yes (Mac and PC)	
ColorCut Pro connectivity		Direct Plugin to: Adobe® Illustrator® (all versions) Mac & PC, CorelDRAW® X3 - X8 (PC Only)				
Additional software		SignMaster™ Pro (PC Only)				
File formats		ColorCut Pro is a plugin for Adobe® Illustrator® & CorelDRAW® (requires either app) and works with native CorelDRAW® or CorelDRAW® EPS files and native Adobe® Illustrator® files. (ColorCut Pro, cuts directly from Adobe® Illustrator® or CorelDRAW®)				
		SignMaster™ is a stand-alone application for cutline creation and will also import Adobe® Illustrator® PDF and EPS file formats and provides enhanced functionality				
Connectivity		USB (1 connection to Mac or PC is required)				
REGISTRATION CONTROL						
Registration system		High resolution optical registration system which reads the registration marks on the media and compares the position with the original value from the digital file. The Intec ColorCut Pro software then acts accordingly to correct linear and angular positional differences by automatically adjusting the cut lines				
POWER REQUIREMENTS						
Voltages (cutter)		100V-240V auto switching	100V-240V auto switching			
Power (cutter)		200W, 3.0A	200W, 3.0A			
Voltages (vacuum pump)		110V or 220V (Voltage specific)				
Power (vacuum pump)		400W, 110V / 3.9A (vacuum)	750W, 110V / 10.8A (vacuum)			
		400W, 230V / 2.7A (vacuum)	750W, 230V / 4.5A (vacuum)			
Approvals		UL, c-UL certified. Complies with CE and RoHs directive, VCCI Class A, FCC Class A, EN55022 Class A				
GENERAL						
Weight (unpacked)		152 lbs	180 lbs	213 lbs	240 lbs	
Dimensions* (unpacked) L x W x H†		34.17" x 29.96" x 40.15"	38.89" x 39.88" x 40.15"	44.88" x 45.25" x 40.15"	51.65" x 51.37" x 40.15"	
Weight (crated)		224 lbs	284 lbs	286 lbs	363 lbs	
Dimensions (crated) L x W x H		46.45" x 35.43" x 22.04"	54.72" x 40.94" x 22.04"	55.90" x 51.18" x 22.04"	62.20" x 55.51" x 22.04"	

* Dimensions reflect full extremities of each device. † Height to cutting table top surface 33.85". Height to top of beam = 40.15" (Both height dimensions +/- .75" owing to adjustable feet).