

SDX FEES...making dysphagia easier to swallow since 1997



SDX is a Therapist-owned company, originally established in 1997 by a speech pathologist in Connecticut. Since our inception, we have spread to Massachusetts, Rhode Island, Vermont and New Hampshire with a customer base of over 350+ skilled nursing facilities. We are speech pathologists specially trained in the Fiberoptic Endoscopic Evaluation of Swallowing (FEES), Medicare CPT code 92612.

We promote the growth and development of the medical speech therapy community through ongoing educational networking events, student internships and participation in AHCA events across New England. We support the CSHA, MSHA, RISHA, VSHA and NHSLHA speech associations.

Our popularity in skilled nursing is driven by our prompt, professional services. We aim for 48-hour scheduling from the time of your call ensuring that in a reimbursement era operating under shorter lengths of stay, you don't wait for answers about a resident's diet.

Our Goal: To provide functional outcomes, balancing patient quality of life with progressive therapy including biofeedback and staff training via FEES. SDX FEES Specialists will collaborate with your facility speech pathologist and nursing staff to ensure we meet your needs every time.

SDX

Making Dysphagia
easier to swallow
since 1997.
Service in 48 hours
now available
across New
England

Learn more at
SDX-FEES.COM

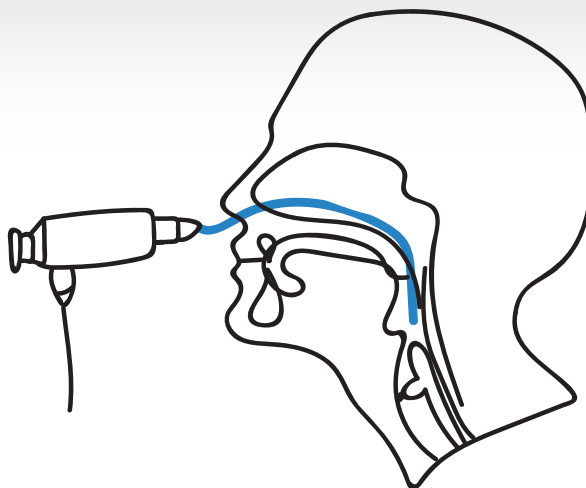


See the
FEES difference
with **SDX**

21 Waterville Road
Avon, CT 06001

860.573.0120
katrina@swallowingdiagnostics.net
SDX-FEES.COM

See the FEES advantage with SDX!



SDX

FEES is the only swallow test that lets us view secretions, spontaneous saliva swallows and laryngeal & pharyngeal tissue because of our top-down view into the pharynx. We can determine if there are signs of laryngo-pharyngeal reflux or even aspiration of oropharyngeal secretions. When we come across residents with chronic cough or aspiration pneumonia in the absence of aspiration of food or liquid, **FEES** is the test that can provide the necessary information for a differential diagnosis and functional management.

The FEES (Fiberoptic Endoscopic Evaluation of Swallowing) procedure has been well-established in the research over the last 30 years since its inception by Dr. Susan Langmore. The “gold standard” of instrumental dysphagia testing is to truly have the choice to select the best exam based on the patient’s symptomatology and clinical considerations. A FEES does not use radiation like the MBS (Modified Barium Swallow) procedure which means a FEES has no time limits. A FEES can assess an entire meal and on average, an SDX FEES lasts 12 minutes. Research has proven that 90% of aspiration happens before or after the swallow, the stages of the swallow the FEES is most adept at viewing. With continuous recording, footage can be used for biofeedback and staff and caregiver training which is particularly beneficial in the decision-making process to determine the least restrictive diet.

When you think FEES, think about residents who have the following challenges:

- Slow to eat
- Difficult to position or limited time out of bed
- Restricted upright position due to surgery or pain
- Respiratory difficulties due to pre-existing conditions like COPD & CHF
- Neurodegenerative disorders
- Medically fragile residents
- Residents that fatigue when eating
- Vocal changes/wetness or coughing during or after a meal
- Vocal changes/wetness or coughing persisting even when the resident is not eating

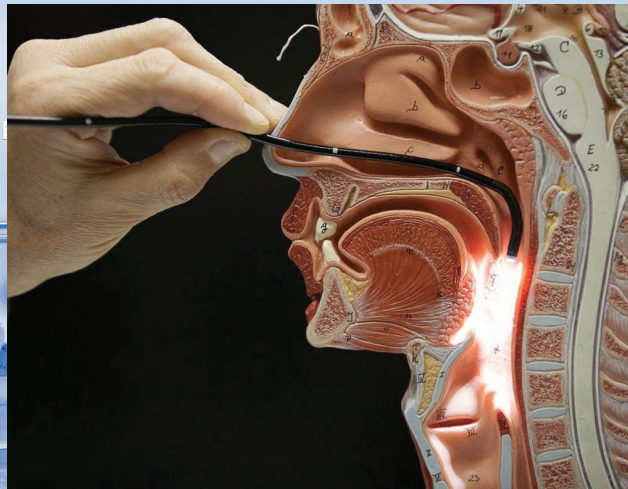


See the
FEES difference
with **SDX**

21 Waterville Road
Avon, CT 06001

860.573.0120
katrina@swallowingdiagnostics.net
SDX-FEES.COM

SDX FEES puts a FOCUS ON FUNCTION!



When **SDX** comes to your facility, we make our procedure resident-specific. For a resident that can self-feed, we view them drinking continuously by cup or straw. We see them take their typical-sized bite and we can even see how they swallow pills with liquid. If a resident requires assist when eating, we can see how they respond to boluses from puree to regular and from small to large. An SDX FEES focuses on each resident's specific strengths and challenges to provide optimal outcomes.

Using real food and drinks right from the meal tray is a FEES-tastic advantage. For example, the range of thickened liquids is so broad that a "barely nectar" drink like a health shake may be aspirated while a pre-thickened juice may not. Even testing ice cream on a FEES can be invaluable in allowing a resident an accommodation to their otherwise modified diet. One goal is to always try strategies before modifying the diet. Thickened liquids, in most cases, should be a last resort. Hydration and quality of life considerations carry the same weight with SDX FEES Specialists as aspiration and pneumonia risk. Because our hand-picked speech pathologists practice in long-term care before they are trained as FEES Specialists, we are truly experts at facilitating the decision-making process to determine the least restrictive diet.

When it comes to residents with NPO status, we apply the research and understand that no swallowing greatly reduces their prognosis to become a functional eater again. A FEES can test a saliva swallow with simply a drop of food color. We can even test ice chips. Regaining swallow function can be a slow process depending on the length of NPO status and the resident's comorbidities but the FEES can be used repeatedly over time to measure gains and to support & guide continued skilled speech therapy.

The **SDX FEES** process starts with your facility SLP's recommendation to the physician. Once the order is obtained and we are contacted, we aim to schedule within 48 hours. In collaborating with your staff's goals and the resident's needs, we facilitate the selection of food and liquid trials. After our high-level disinfection process, we insert the endoscope into one side of the nose and begin by viewing secretions, tissue and saliva swallows in addition to laryngeal and vocal functions. Food and liquid trials are provided and strategies are taught when appropriate, with the resident, staff and caregivers all able to view the exam in real time. After testing, our report and video with color images are stored for your facility in our cloud which you then can access via a secured portal.

For more details, or to set up a procedure with SDX FEES today, contact us at:



See the
FEES difference
with **SDX**

21 Waterville Road
Avon, CT 06001

860.573.0120
katrina@swallowingdiagnostics.net
SDX-FEES.COM

SDX

**SEE THE
DIFFERENCE,
eliminate the
guesswork with
SDX FEES!**

*Learn more at
SDX-FEES.COM*