

WATERFRONT PRODUCTS *by PMI*
2020 Spring & Summer



SLX PWC Floats



Wave Armor Boat Floats



Wave Armor Floating Dock



***“Economy”* Floating Dock by C a D**



Otter Island Swim Floats



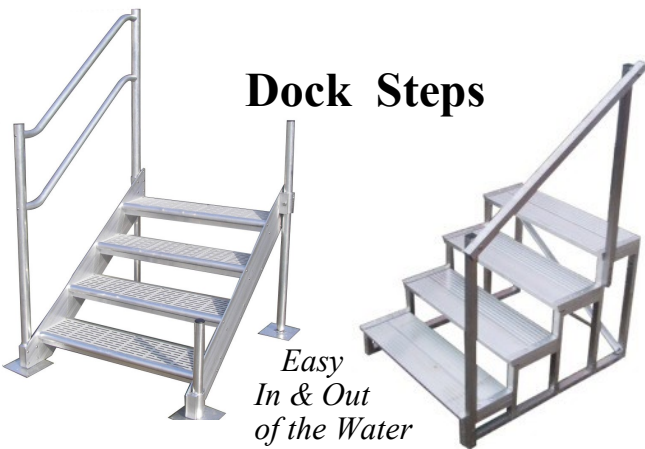
YakPort Kayak Launch Assists



Anchors
For All Waterfront
Products



Dock & Boat Ladders



Dock Steps

*Easy
In & Out
of the Water*



Dock, Pier, and Boat Protection

YOUR LOCAL DEALER

FLOATING DOCK BY WAVE ARMOR



Stability on the water is the most important feature of floating dock. Wave Dock is 5' wide with suction pockets molded in the bottom that helps it hug the water. Wave Armor dock sits only 14" off the water. Has a tan stone look anti-slip surface that hides dirt. *The most stable floating dock on the market.*

It's foam filled and steamed making it virtually indestructible. 10 YEAR WARRANTY.



10' long x 5' wide **\$1799**
The wider the dock the more stable it is on the water.



\$159

24"

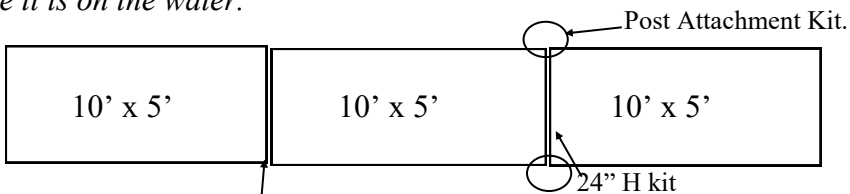


Kit of 2
H connectors

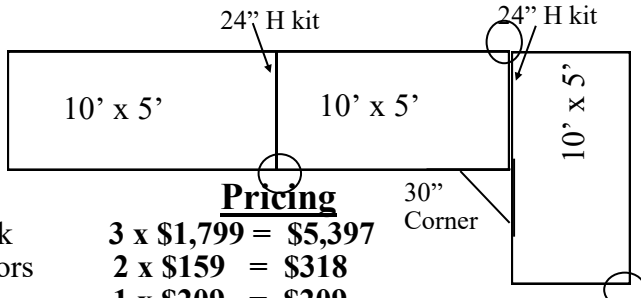


Pieces lock together with our unique H Beams.

Here are a couple of examples showing simple dock designs.



Pricing
10' x 5' Dock Sections **3 x \$1,799 = \$5,397**
24" H Dock connectors **2 x \$159 = \$318**
Post Attachment kits **1 x \$209 = \$209**
Example shown \$5,924



Pricing
10' x 5' Dock **3 x \$1,799 = \$5,397**
24" Connectors **2 x \$159 = \$318**
30" Corner **1 x \$209 = \$209**
Post Attachment Kit **2 x \$209 = \$418**
Example shown \$6,342



Post Attachment Kit \$209 (Set of 2)
Pier pipe goes through the kit keeping the dock from moving with currents.



7' Dock Ramp Kit \$929
12'8" Dock Ramp Kit \$1349



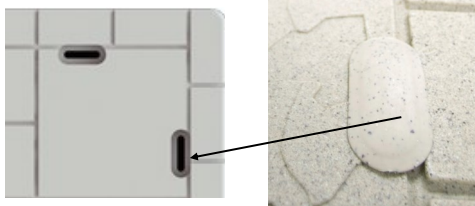
30" Corner \$209
Fill corners where docks come together at right angles.



5' Dock Bench Kit \$728 Bench & mount
The 5' bench is off the dock for more useable dock space. Sits 2 comfortably.



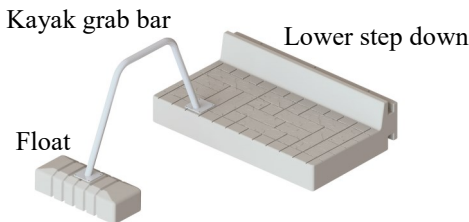
Folding Ladder \$344
Mounts in the H-Beam on the side of the dock.



Decorative Snap-In Plugs \$34 (20)
Cover the accessory indents on the dock. Dress up the dock for a clean appearance.



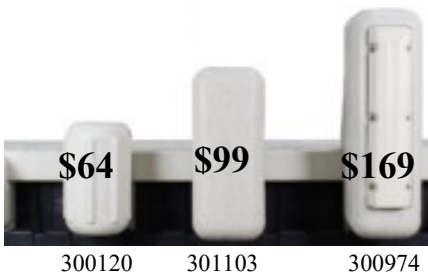
Lower Step-Down \$479
Provides water level access to the dock.



Kayak Assist Kit \$675
Stability for canoes or kayaks. Kit comes with lower step down section, grab bar, and float.



Kayak Rack \$379
Rotationally molded plastic. Attaches to our dock in the H-Beam channel. Also works with paddle boards.



Wave Dock Bumpers
Choose either 15", 34", or 44" tall
Slides into the H Beam Channel.



Horizontal Bumper \$89
Slides into the H Beam Channel.



Dock Post Covers \$89 (Set of 2)
A decorative way to cover pier pipes.

For more information on Wave Armor Dock see **WaveArmor.com** or **PMImarine.com**

OTTER ISLAND Swim Raft, the Family Fun Float

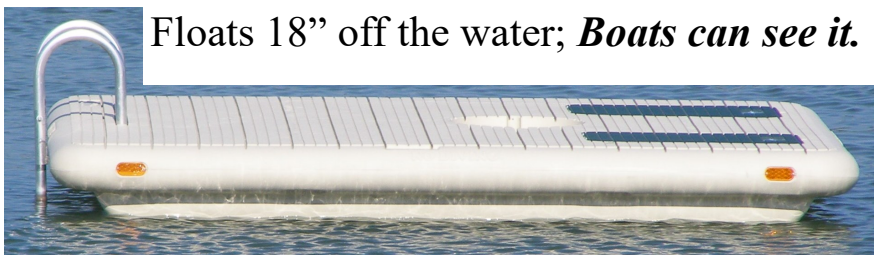


Foam Filled-Virtually Indestructible. 8' x 10', 3000 lb. capacity, weighs 300 lbs. **3 year warranty.**

- Fold Down Lounges & Table-when you want a smooth flat deck.
- Storage Under Seat Backs-keep a sponge or brush for cleaning.
- 3 Step Aluminum Flip Up Ladder-even heavy swimmers can board easily.
- Rounded Corners & Non Slip Surface-safe for the youngest swimmers.
- Molded in Eyelets - for anchoring or pulling in or out of the lake.

\$1799

Yellow or Beige Float Base; Green or Blue Table & Lounge



Floats 18" off the water; *Boats can see it.*

Table and lounges fold flat when you want a big play area.



Three step ladder accommodates swimmers up to 300 lbs.

Double Mooring Kit Standard with new Otter Island



2 per kit.

Optional use with all water toys. **\$95**

Modern ski boats throw 3' wakes. The clevis kit spreads stress between the mooring eyes. The bungees help absorb shock.



Anchor

Fill it with sand and it weighs 140 lbs.



The underside grips the bottom.

10" tall, 26" wide. Eye bolt for anchoring. Plastic screw-on cap.

Kayak Launch Assist by Connect a Dock

Getting into a kayak on a rocky shoreline, in muck, or from a sea wall can be a challenge. It gets more challenging as you get older. Keeps kayak or canoe stable as you get in and out keeping you dry. Mounts against most stationary docks, floating docks, or even a sea wall. *Comes standard with mounting hardware that is often optional elsewhere.*



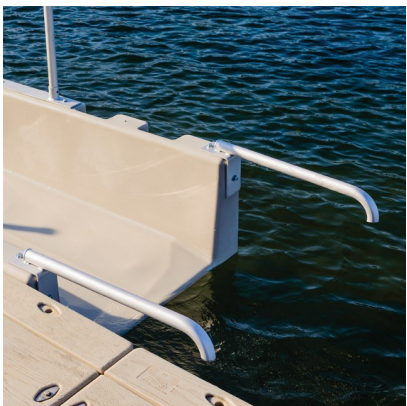
Standard Launch Assist \$799

Includes mounting hardware, Specify type. 48" wide by 60" long. Weighs about 90 lbs. Rotational Molded Plastic with Five Year Warranty. Virtually maintenance free. All hardware is aluminum or stainless steel. Use with a Kayak, Paddle board or a Canoe.



Shown with *optional* assist bar.

Optional Accessories



Back Grab Handles \$199



Overhead Assist Bar \$199



Shown with Both Assists \$398

Sea Wall or Dock Boarding Steps

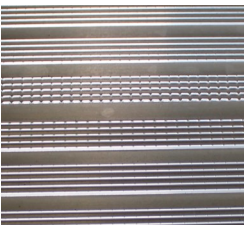
Don't let a rocky shoreline prevent you from getting into the water. Position steps against a dock or sea-wall and step into the water. Easier for pets and seniors than trying to climb a ladder.



One handrail standard.
Additional handrail \$65

Steps are 35" wide x 11" deep with a 350 lb. capacity per step.
Steps are 7" apart and embossed non-skid aluminum impervious to water.

21" top step	<u>Three Step</u>	w/handrail	<u>\$320</u>
28" top step	<u>Four Step</u>	w/handrail	<u>\$385</u>
35" top step	<u>Five Step</u>	w/handrail	<u>\$480</u>
42" top step	<u>Six Step</u>	w/handrail	<u>\$560</u>

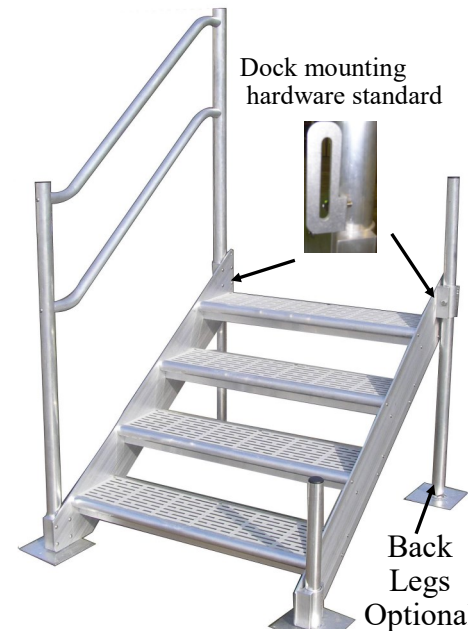


Aluminum frame & steps. Stainless Steel hardware. Non-skid tread

Water shoes are generally recommended with the Sea Wall steps. There can be sharp edges.

Bolt to Dock or Free Standing Adjustable Depth Boarding Steps

36" wide, flow-thru non-skid tread helps prevent algae build up on steps. No sharp edges to hurt feet: one handrail standard with each set of steps. Mount to a dock or sea wall or purchase optional rear legs for free standing application. 350 lb. capacity.



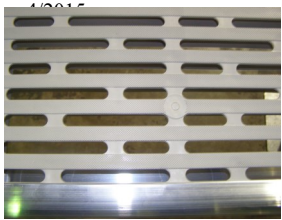
Dock mounting hardware standard



Back Legs Optional

<u>3 Step</u>	adjusts 21" to 29"	<u>\$540*</u>
<u>4 Step</u>	adjusts 28" to 36"	<u>\$665*</u>
<u>5 Step</u>	adjusts 35" to 43"	<u>\$765*</u>
<u>6 Step</u>	adjusts 42" to 50"	<u>\$810*</u>

** Mounted to Dock*



Flow-thru tread helps prevent algae build up.

Extra Handrail (one is standard)	\$79
Back Legs for free standing use	\$59 3 step
Back Legs for free standing use	\$125 4-6 step

Back legs with 4-6 steps include a back brace for extra strength.

36" wide x 10" deep steps, flow-thru tread, rounded aluminum extrusions. Steps are spaced about 7" apart. Standard front legs adjust 18". Handrail is 1 1/2" round aluminum. No sharp edges, no protruding hardware, even the bottom plate corners are rounded.

Heavy Duty Dock Bumper 30" \$26.95



High impact poly resin bumper. Fits over 2" pier pipe. Use these Heavy Duty (plastic) bumpers where boats may frequently come in contact with the dock. Hard plastic protects but won't damage your boat or rub rail. Lasts for years. **5 year warranty.**

Available in **WHITE ONLY** B-30S

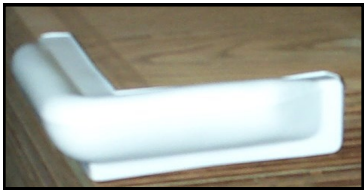
Colored Torpedo Dock Bumpers \$24.50 each



Protect your boat with post bumpers. Colored PVC plastic air filled. Ours won't *melt* like foam bumpers or become brittle and crack like ordinary (*non-air filled*) bumpers. Bumpers have a *bladder* (like a football). The air inside cushions your boat from the dock
3 year warranty.

Availa

10" Corner Bumpers \$19.95



10" on each side. Corner bumpers attach over sharp edges on wood or aluminum dock. Inexpensive protection for your boats. Can also be used on Pontoon Boats to protect the deck. **WHITE only.**



Dock Bumper Wheel \$44

12" round x 6.5" tall. Fits over 2" pipe. Air filled for maximum protection for your boat. Rolls easily and floats.



Floating “drive-on drive-off” BOAT FLOATS

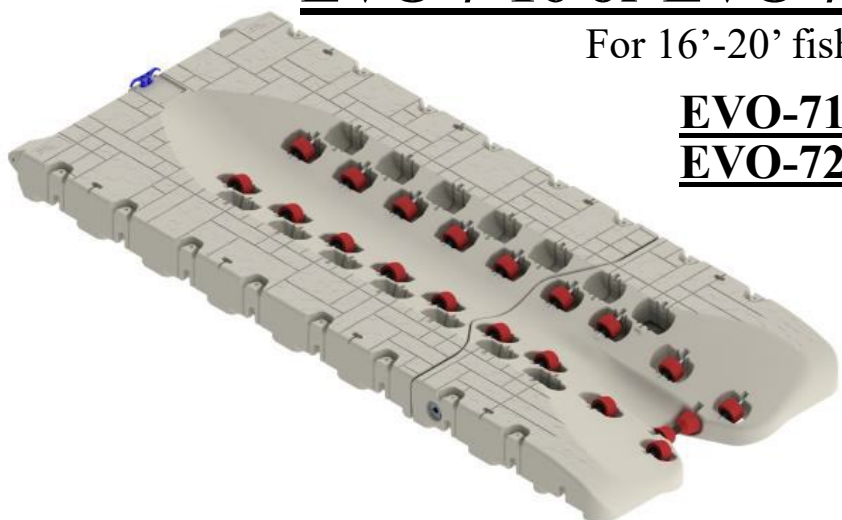
EVO 7-16 or EVO 7-20 for boats 16’ to 20’ long

For 16’-20’ fishing, jet or center console boats.

EVO-716 (7’ Wide, 16’ Long) \$3999

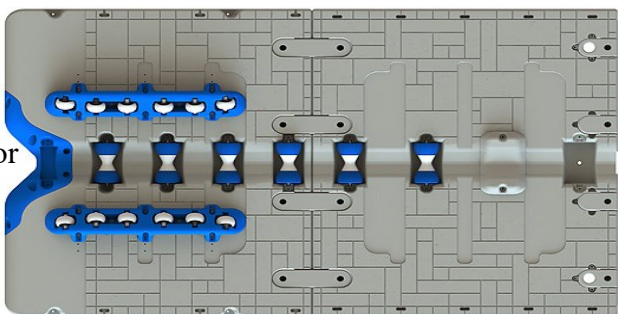
EVO-720 (7’ Wide, 20’ Long) \$4599

New for 2020

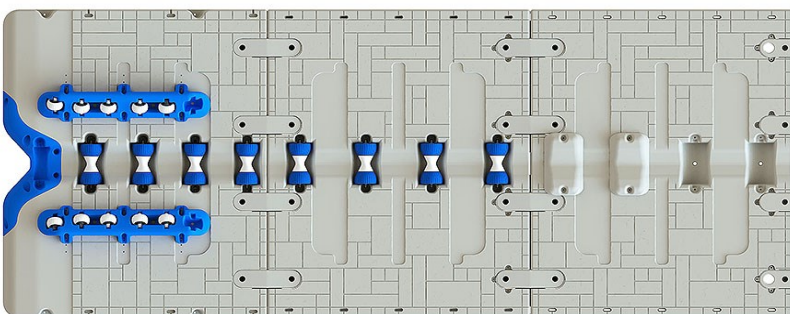


SLX-10 BOAT-PORT 16’ or 24’ Long, 10’ Wide

10’ wide Plenty of walk around room for boats up to 8’ wide.



2 piece system 16’ long



3 piece system 24’ long



2-Piece System (10’ Wide, 16’ Long) \$6799

3-Piece System (10’ Wide, 24’ Long) \$9799

**The SLX-10 is a special order item.*

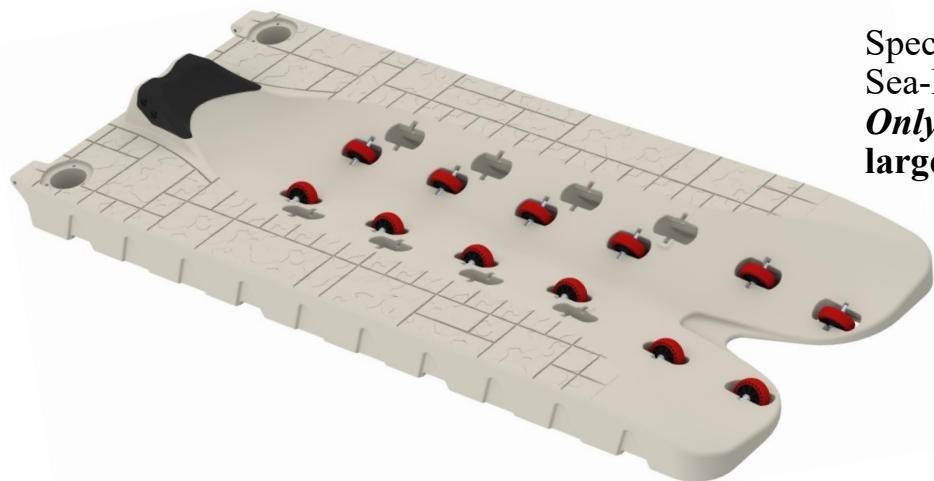
8 year warranty from the manufacturer.

FOR INFORMATION SEE WAVEARMOR.COM



The self-leveling floating port distributes the vessel weight over the full span, providing exceptional lift and buoyancy (up to 7,500 lbs. for 3-piece with no air assistance). Has adjustable bunks to match any keel and heavy duty keel rollers that make boarding and off-boarding simple and smooth.

EVO SPORT For Smaller PWC’s 11’ Long, 4’ 10” Wide \$1499



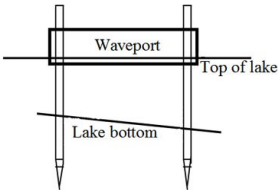
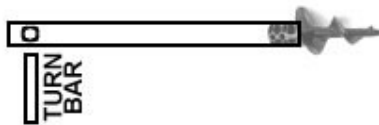
Specifically designed for the modern smaller machines like the Sea-Doo Spark, Yamaha EX series, and Stand Up models. **Only 900 lb. Capacity.** Generally not enough floatation for the larger machines or bigger riders.

All the features of our larger ports. Large roller wheels that can be adjusted, plus a built in padded bow stop. Moors with pier pipe like the larger floats and has a deep entry “throat” for no bump entry.

Pier Pipe Mooring Kits for SLX and EVO Jet Ski Floats

One of the unique design features of the Wave Armor PWC floats is the pre-formed holes in the float body. When moored in lakes with sandy bottoms where the water depth isn’t over about 6’ deep, you can use our inexpensive pier pipe mooring kit. No other expensive attachments or kits needed.

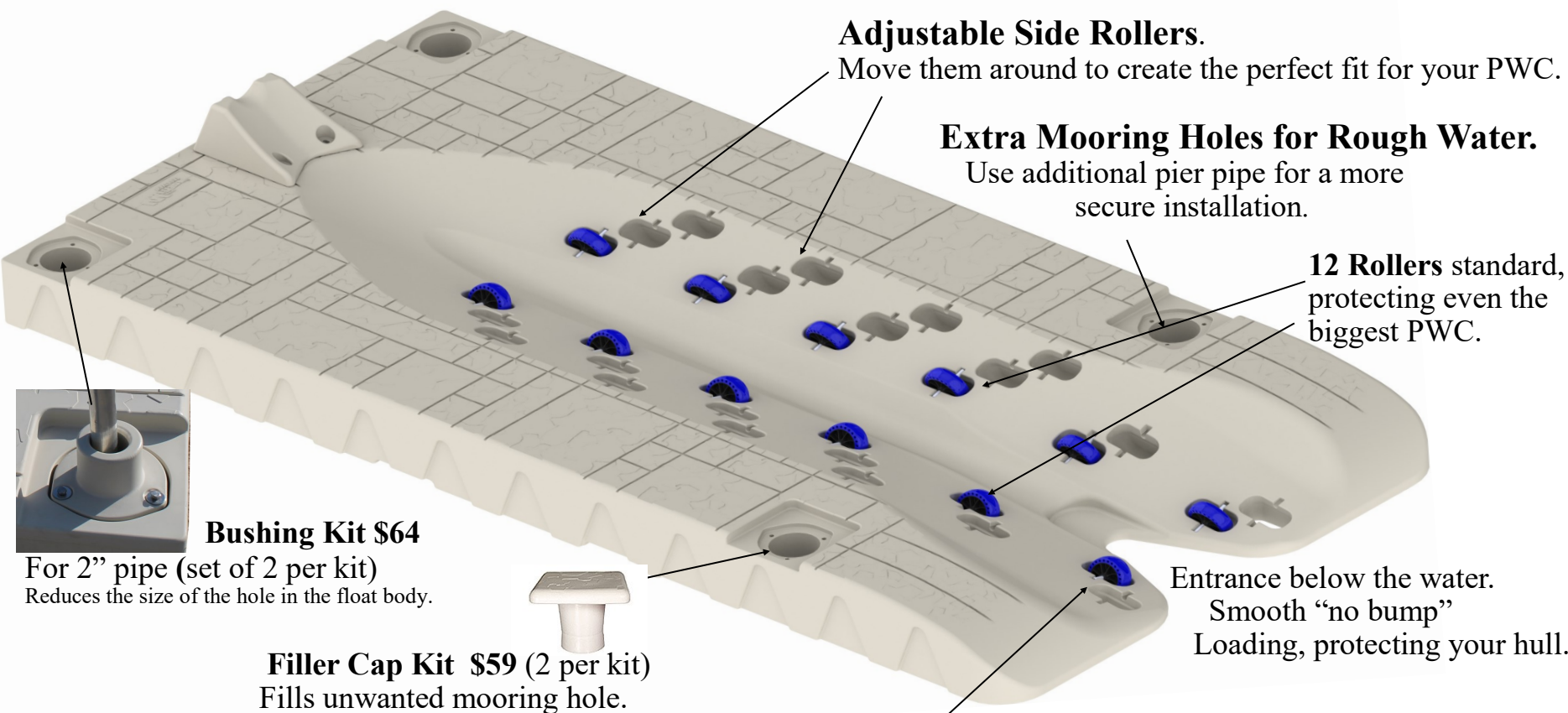
Pier Pipe Mooring Kit \$184



For other mooring kit options see page 7

SLX 5' OR 6' WIDE JET SKI FLOATS

12'8" long (*accommodates the biggest PWC's*). 12 rollers with 32 pockets for adjustment (*fits any machine*) 5' or 6' wide. 6' when you want more walk around room to install a cover or perform maintenance. Moors with preformed holes in the float body.



Adjustable Side Rollers.
Move them around to create the perfect fit for your PWC.

Extra Mooring Holes for Rough Water.
Use additional pier pipe for a more secure installation.

12 Rollers standard, protecting even the biggest PWC.

Entrance below the water.
Smooth “no bump”
Loading, protecting your hull.

Bushing Kit \$64

For 2" pipe (set of 2 per kit)
Reduces the size of the hole in the float body.

Filler Cap Kit \$59 (2 per kit)
Fills unwanted mooring hole.

Moors with pier pipes into preformed holes in the float body. *No extra attachments required.*

Entry rollers with open V design for easy loading.
The biggest heaviest machines load and unload with ease.

SLX-5 12'8" long, 4'10" wide, 1500 lb. capacity **\$1699**

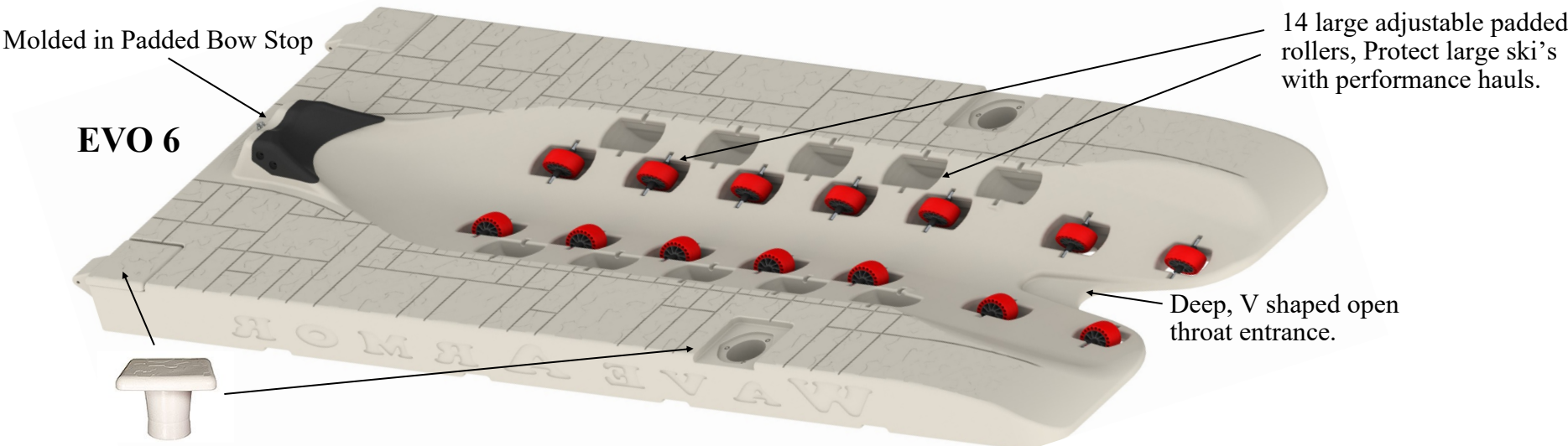
One benefit of the 5' wide SLX is that you can moor two in the common 10' wide dock well at many marinas.

SLX-6 12'8" long, 6' wide, 2000 lb. capacity **\$1799**

The 6' wide PWC float has an extra 6" space on each side. More walk around room than the 5'.

Our SLXs are Foam Filled and Virtually Indestructible 8 Year Warranty

EVO 6' WIDE JET SKI FLOAT for the largest PWC's



14 large adjustable padded rollers, Protect large ski's with performance hauls.

Deep, V shaped open throat entrance.

EVO 6

One set of Filler Caps included with EVO-6.
Can be moved to the rear when using the pier pipe installation kit. Takes the same mounting kits as SLX.

EVO-6 14'4" long, 6' wide, 2200lb capacity **\$2099**

For the large heavy machines, and performance models with deep V hauls. A variation of the popular 6' SLX but 1'8" longer. With 14 large red rollers and a padded bow stop. Comes standard with filler cap kit for the front holes. Still accepts standard reducer bushings and mounting kits, with the ability to move the filler caps to the rear holes when using pier pipe installation. Can work for some small boats.

EVO-5 14'4" long, 5' wide, 1700lb capacity **\$1999**

Five or Six Foot Wide: What's The Difference?

You should think about how you'll use the floats. The five foot is popular in marinas with 10' slips. Two 4'10" SLX's will fit; two 6' won't. The benefit of the 6' is additional walk around room. It might be a benefit to walk around the float for fueling or installing a cover. If you moor in shallow water where you might just jump off into the water, you may never need the extra walk around space.



4'10" wide (SLX-5)



6' wide (SLX-6 or EVO-6)

FOR MORE INFORMATION ON PWC FLOATS SEE WAVEARMOR.COM

FIXED FRAME PONTOON/DOCK LADDERS

1” square aluminum tube with satin finish anodized frame. Large, wide steps.



3 Step
Shown

3 Step \$120

Extends 36” below the deck.

Ideal for shallow water.

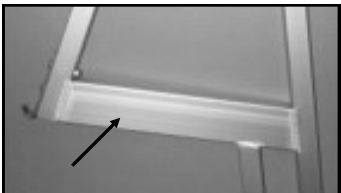
4 Step \$140

Extends 46” below the deck.

5 Step \$165

Extends 56” below the deck

Large 16” wide x 5½” deep steps. *Easy on bare feet.*
Reinforced top *for strength*, 400 lb. capacity.



Reinforced top frame
supports all swimmers.



Ladder goes out at an
angle. Easier to climb.



Mounts w/ LAKs
Ladder Attachment Kits
standard with new ladders.

Optional (extra) attachment kits for Dock/Pontoon Ladders

Ladder Attachment Kit \$10.50

Buy an extra kit for use on the dock and pontoon.



Backer Plates
included in kit

Heavy Duty Ladder Kit \$24.95

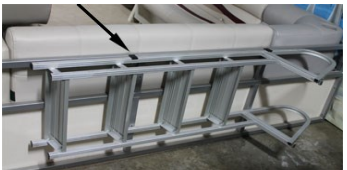
For commercial use or when LAKs won’t work.



Galvanized steel

Ladder Storage Clips \$9.95

Mounts to fence rail, allows for easy storage



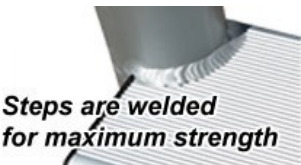
4 step
shown

4 Step \$209

Extends 51” below the dock.

5 Step \$229

Extends 63” below the dock.



Steps are welded
for maximum strength

Welded steps on the
Straight Dock and
Flip-Up dock ladders.



Mounts to the dock through
holes in the handrail

Mounting hardware included.
Special installations may need
additional hardware.

2” round welded dock ladders. Large handrails help
swimmers to pull themselves from the water.
4” deep x 19” wide embossed non-skid steps.



**Rated to
500 lb.
capacity**

Ladder goes straight down.

Folding & Telescoping Stainless Steel 4 Step Ladder \$295

1½” round tube frame, folds out of the way on pontoons. Four large telescoping
steps, extends deep into the water (48”), and steps are 13½” wide. This is the same
ladder used on new pontoon boats. Use on your pontoon or on your dock.



48”
Securely
holds ladder
when
folded up.



5 year
warranty

Steps are welded stainless
steel covered with plastic
to be safe on bare feet

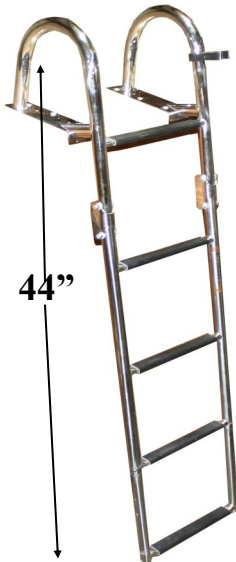
13 1/2”

Steps are 13 1/2” wide
Easy on bare feet

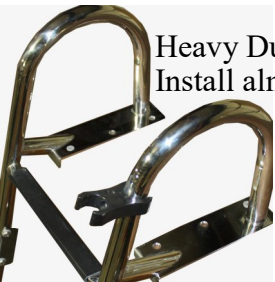


Folding & Telescoping Stainless Steel 5 Step Ladder \$219

1¼” round tube frame. Folds to 10” deep (out of the way on pontoons).
Five telescoping steps, extends deep into the water (44”), and steps are 12” wide.



44”



Heavy Duty permanent mount.
Install almost anywhere.



**Rated to
400 lb.
capacity.**

This ladder is standard equipment on several brands of new pontoon boats.
Use it to replace old damaged aluminum ladders or on a dock or swim
float where you want a strong ladder that folds out of the water.

Connect a Dock 2000 Series *Economy* Floating Dock



- ◆ Closely spaced ribs support the top. *It's never "spongy". This gives the top a strong and stable feel.*
- ◆ Our dock is thick, durable, and puncture resistant.
- ◆ Color is throughout. *If you scratch it, it's the same color.*
- ◆ The unique chamber design of the bottom traps air for additional buoyancy. *Each section supports 2500 lbs.*
- ◆ Light weight, 200 lbs. per section, easy to handle.



\$65 each

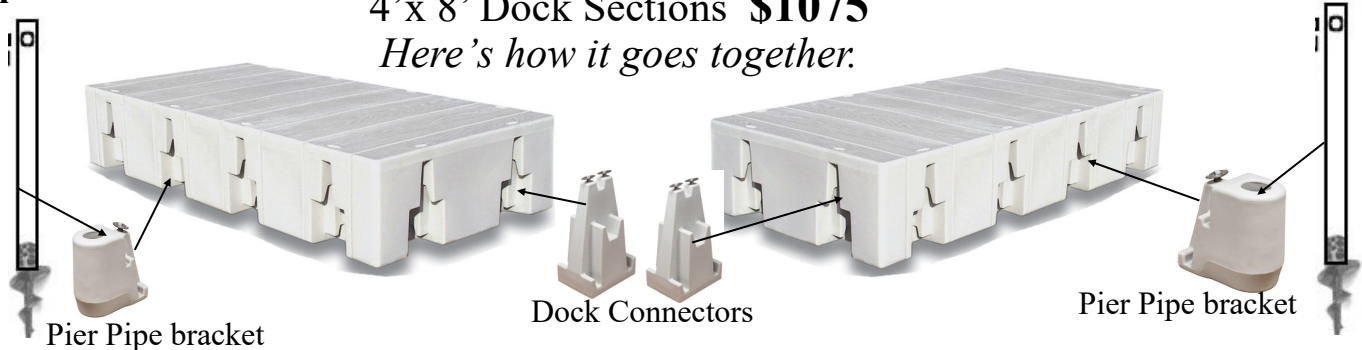
The connectors are the key to our system. They mount into formed grooves in the side of the dock. Pieces of dock are joined together from atop the dock. There is often no need to get into the water.



\$72 each

Dock is anchored to the lake bottom by pier pipes. The pipes go through connectors that can attach anywhere along the side of the dock.

4'x 8' Dock Sections \$1075
Here's how it goes together:



4' x 8' Transition from land to dock.
Hinge included
Hinge separate **\$175**

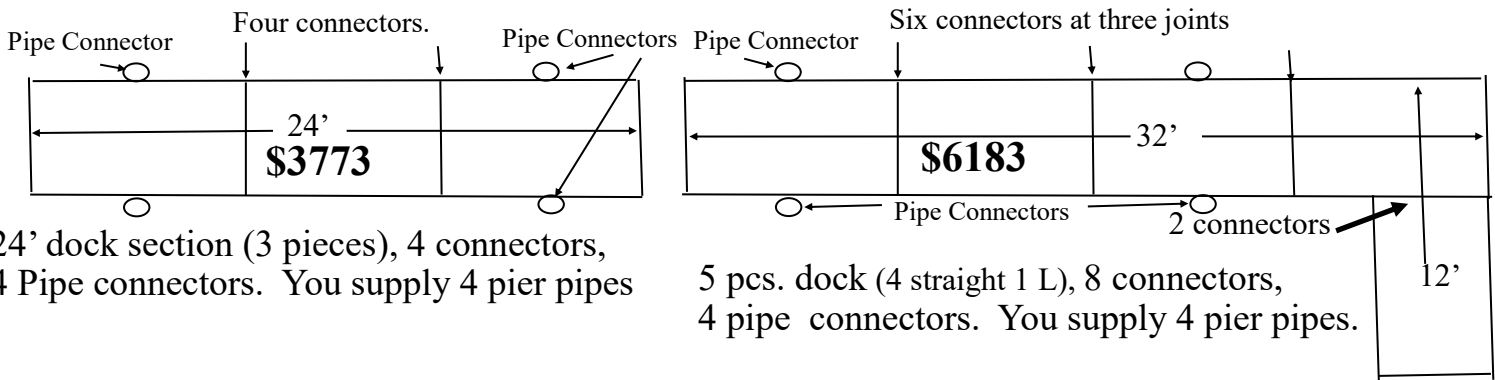
Ramp \$1599



Corner \$385

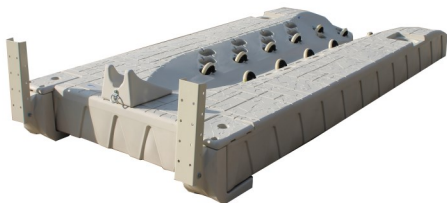
Fill corners on L sections.
Requires 4 connectors.

Calculate your length, each section is 8' long. Each piece of dock, end to end takes two connectors. One pair of pipe connectors should be used for every 10'-12' of dock. **YOU SUPPLY PIER PIPE.**



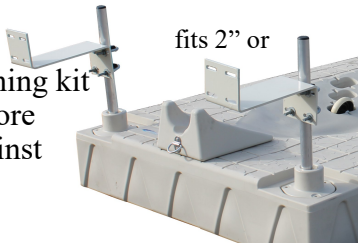
Mounting Kits for SLX and EVO Jet Ski Floats

Dock/Seawall Attachment Kit* \$249



A steel plate attaches to the dock or seawall. The knuckle pivots for loading/unloading.

Attachment Kit for 18" Deep \$149



Raised bushing kit provides more surface against pier pipe.

Install to a fixed dock or sea wall with pipe and Z brackets (Pipe not included). Kit includes two Z brackets, reducer bushings, and hardware.



Port to



Some customers like to attach their ports together. The Port to Port kit connects float or a strong, long lasting connection. However note that it attaches from the bottom and makes the floats more difficult to remove at storage time. Instead of lifting a 350 lb. float you have to handle two or about 700 lbs. When mooring in shallow water it's sometimes simpler to set the floats side by side rather than being connected.