

BNR-MC-1000

MOTORCYCLE LIFTS

These lift tables are ideal for making repairs to motorcycles, snowmobiles, ATVs, jet skis, ect.
Choose from a range of accessories to customize these tables for your shop.

BNR-MC-1000



Features:

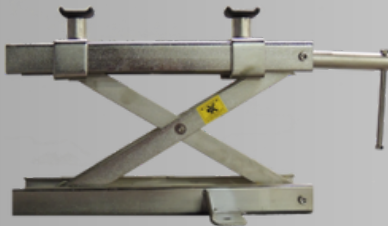
- 1,000 lbs. capacity
- Air-powered lift
- Extra large platform
- 30" working height
- Motorcycle Vise included
- Accessories available

BNR-MC-1000-BLK



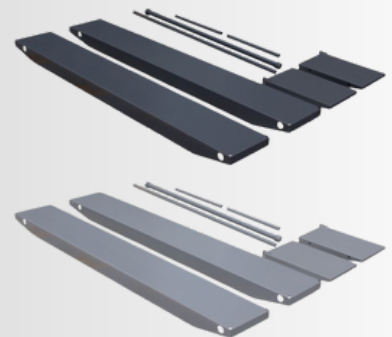
Lift Model	M-1000C
Capacity	1,000 lbs.
Min. Lifting Height	7"
Max Lifting Height	30"
Overall Length w/ Ramp	108"
Overall Width	47"
Platform Size (L x W)	84" x 24"
Platform Size w/ Side Ext	84" x 48"
Power	Air (90 - 100 PSI)
Ship Weight	395 lbs.

Optional Accessories



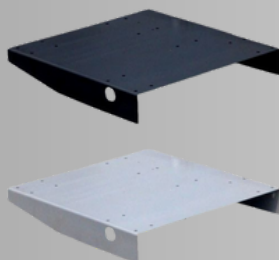
M-JACK
Mini Jack

Lifting range 3-3/4" to 15-3/4". Spin-up adapters



M-SIDEEXT

12" Side Extensions (set of 2)
Expands width of table from 24" to 48". Ramp extensions included.



M-FRONTTEXT
13" Front Extension
Extends the table to 93".