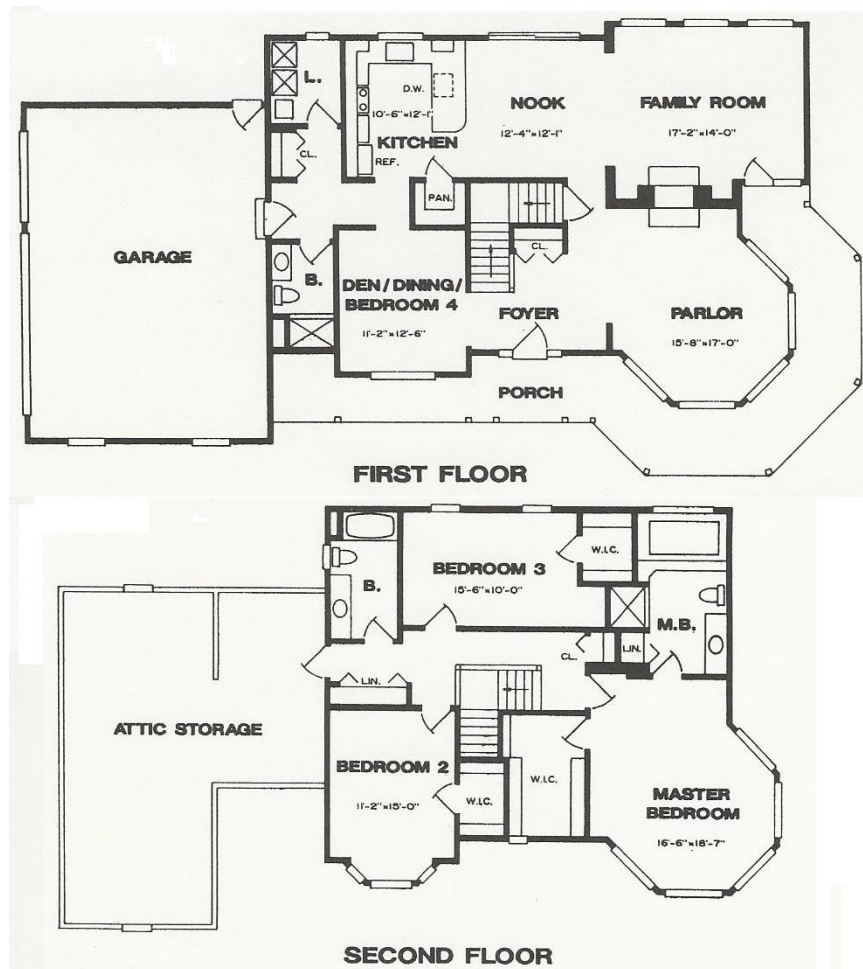


**The Victorian**



**Floor Plan**





2,575 SQ. FT.  
Two Story  
3-4 Bedrooms  
3 Baths  
3 Car Garage

### Features Included in Home

1. Large covered wraparound porch
2. Sidelights each side of front door with transom above
3. Elliptic over doorwall
4. Vinyl scalloped siding on front gables
5. Bay window in bedroom #2
6. Octagon window in main bath and walk-in closet
7. Fireplace
8. 9 ft. high ceilings on first floor
9. Wood stair rails
10. Walk in pantry
11. Whirlpool and ceramic tile shower in master bath
12. French door from family room to porch
13. Walk in closets in all bedrooms
14. Large linen closet
15. Large attic storage
16. Parlor room