



BlueFlow Manager: Quick Start Guide

BLUE CAT BIO

1. Custom method options

Editable on PC	Locked on PC	Autonomous on BlueWasher
<ul style="list-style-type: none"> Use to design and edit custom methods (workflows) by combining methods from “Quick Access” Methods run with settings active in “Configure Blue®Washer” screen at runtime 	<ul style="list-style-type: none"> Use to ensure future changes of settings do not affect your method Create from “Editable on PC” method by “flattening” Methods run with settings that were active when file was flattened Edits at command level only 	<ul style="list-style-type: none"> Use for integrated environments; PC sends command “runprog” to start execution on Blue®Washer Create from “Locked on PC” method by export to Blue®Washer Eliminates command traffic between PC and Blue®Washer Allows for very simple driver design

2. Create “Editable on PC” custom method

Click crayon

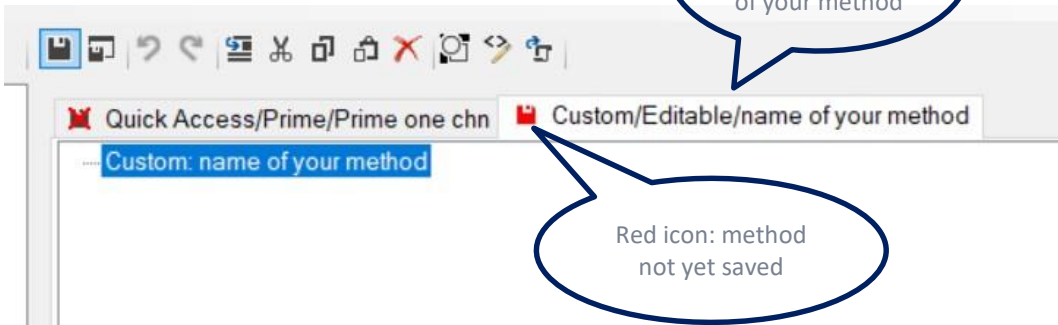
Icon is crossed out: not allowed to edit pre-canned method

Method selected on main GUI screen is shown

Create new custom method from File/New menu

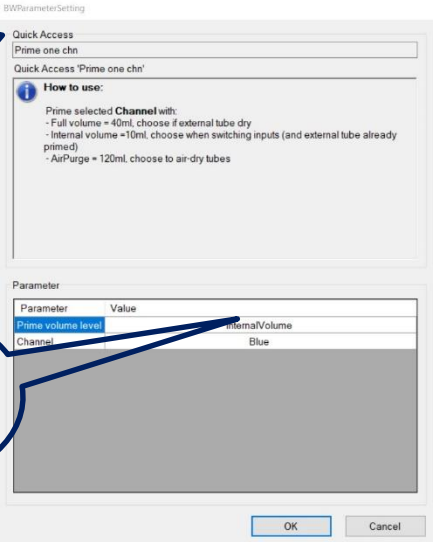
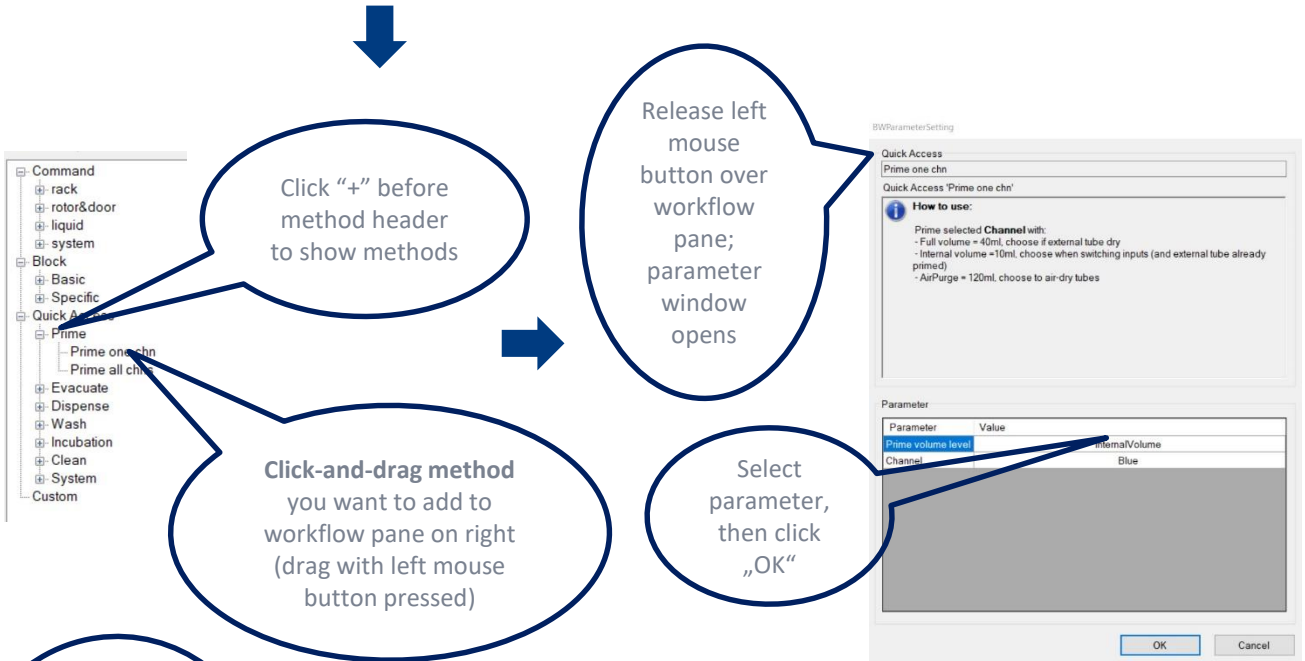
Type name of your method

Click “OK”

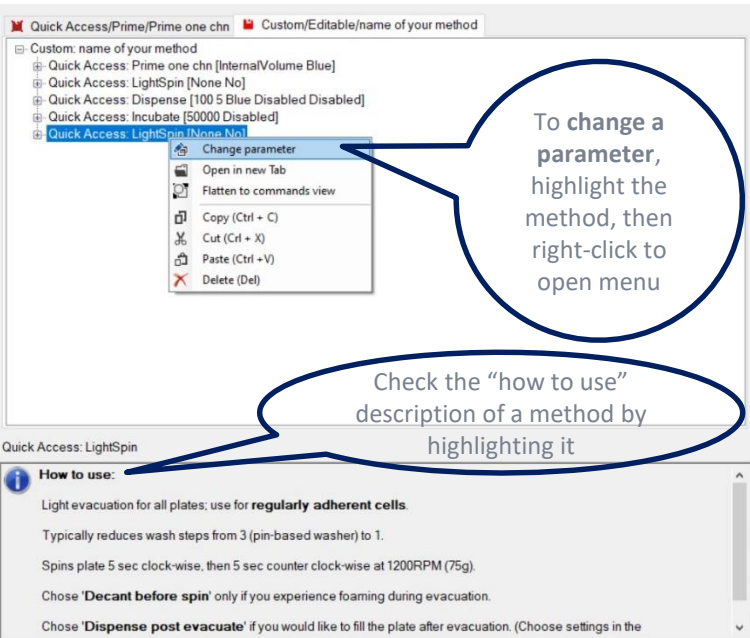
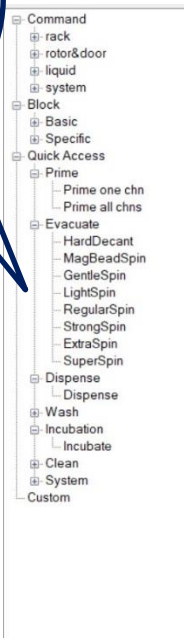


2nd tab opens with the name of your method

Red icon: method not yet saved

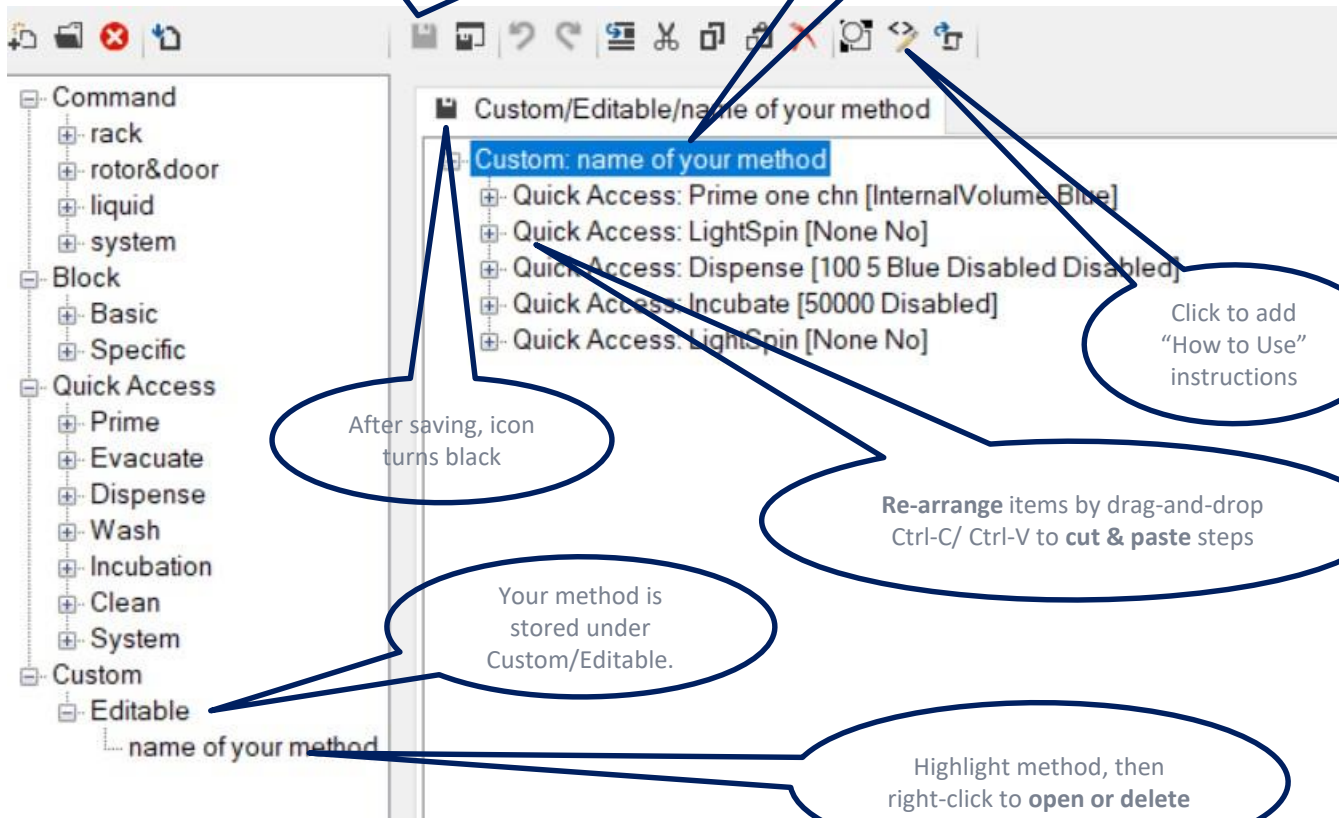


Add "Quick Access" methods until your custom method is complete



To change a parameter, highlight the method, then right-click to open menu

Check the "how to use" description of a method by highlighting it



... then click save icon to save your method

Highlight the name of your method ...

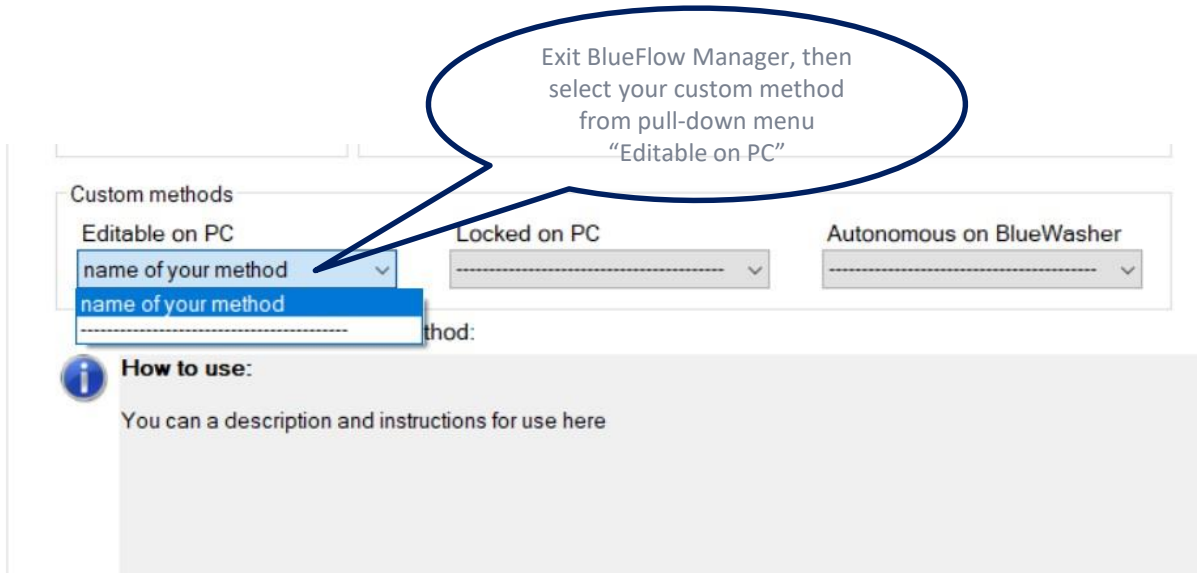
Click to add "How to Use" instructions

Re-arrange items by drag-and-drop
Ctrl-C/ Ctrl-V to cut & paste steps

After saving, icon turns black

Your method is stored under Custom/Editable.

Highlight method, then right-click to open or delete



Exit BlueFlow Manager, then select your custom method from pull-down menu "Editable on PC"

Custom methods

Editable on PC: name of your method

Locked on PC: -----

Autonomous on BlueWasher: -----

Method: -----

How to use:
You can a description and instructions for use here

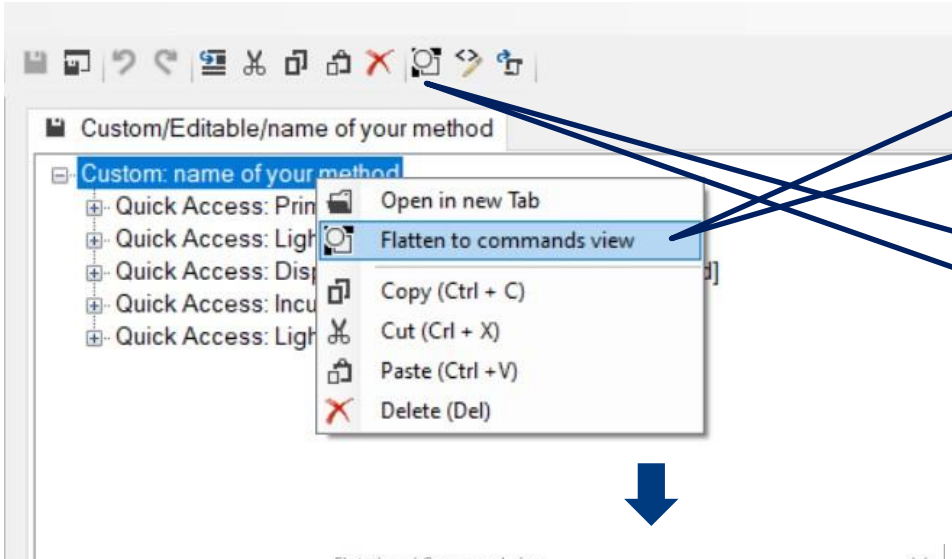
96 | 384 | 1536



Click the crayon again (with your method selected) to re-open the BlueFlow manager to check or edit your custom method



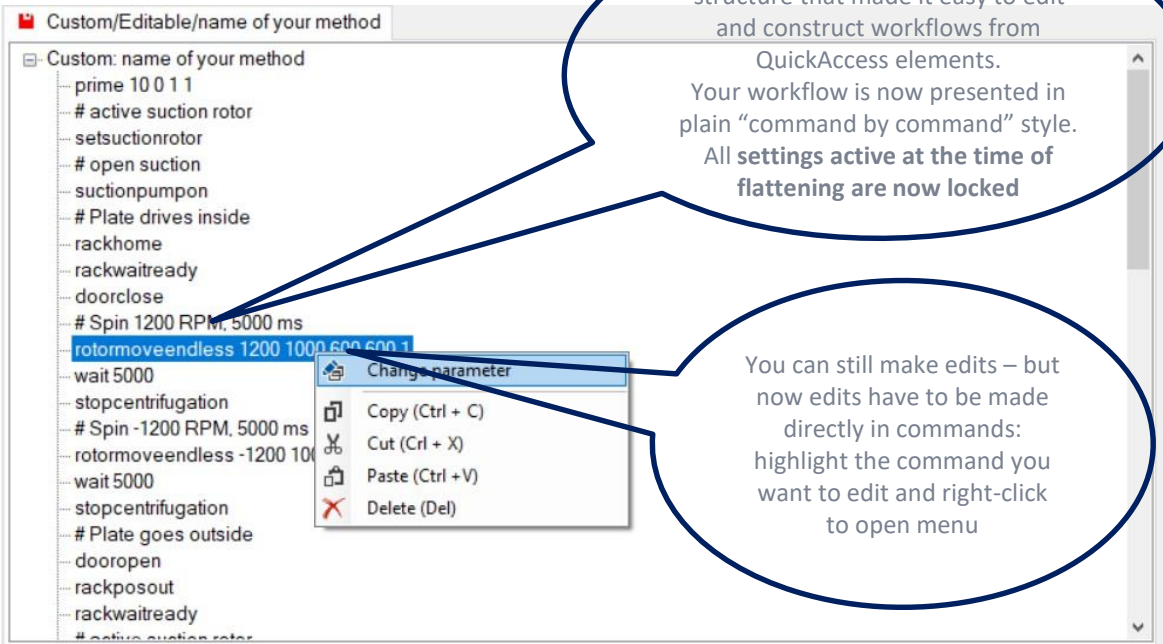
3. Create "locked on PC" custom method



Highlight your custom method, then right-click to open menu and select "Flatten ..."

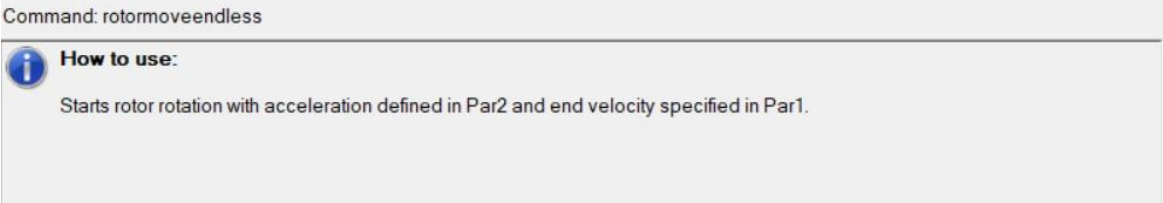
Alternatively, click this icon to flatten highlighted method

Click OK to flatten. **Flattening cannot be reversed!**



Flattening removes the meta-structure that made it easy to edit and construct workflows from QuickAccess elements. Your workflow is now presented in plain "command by command" style. All settings active at the time of flattening are now locked

You can still make edits – but now edits have to be made directly in commands: highlight the command you want to edit and right-click to open menu





BWParameterSetting

Command
rotormoveendless

Command 'rotormoveendless'

How to use:
Starts rotor rotation with acceleration defined in Par2 and end velocity specified in Par1.

Parameter	Value
Spin velocity (RPM)	1200
Rotor acceleration	1000
Rotor deceleration	600
Rotor quick deceleration	600
Vibration Sensor Information 'RPM'	1

Description:
Spin velocity: Velocity of the rotor rotation. Negative values: rotation counter clockwise Positive values: rotation clockwise Note: values -2 to 2 not allowed **Never exceed 3,500 rpm to avoid damage to BlueWasher. Reduce maximum rpm further for any weight imbalance between active and balance plate or when using nonstandard plate weight. Check 0 for specifications**
Unit: rpm

OK Cancel

Selecting the “edit command” option opens the parameter window; shows name and value of each parameter and description of command from user manual

To create an evacuation setting between LightSpin (1200 RPM), and GentleSpin (1000 RPM), you can change the RPM parameter to 1100 here
(Remember to also change the RPM for the counter-clockwise command and the comment lines starting with #)

Custom/Editable/name of your method

```

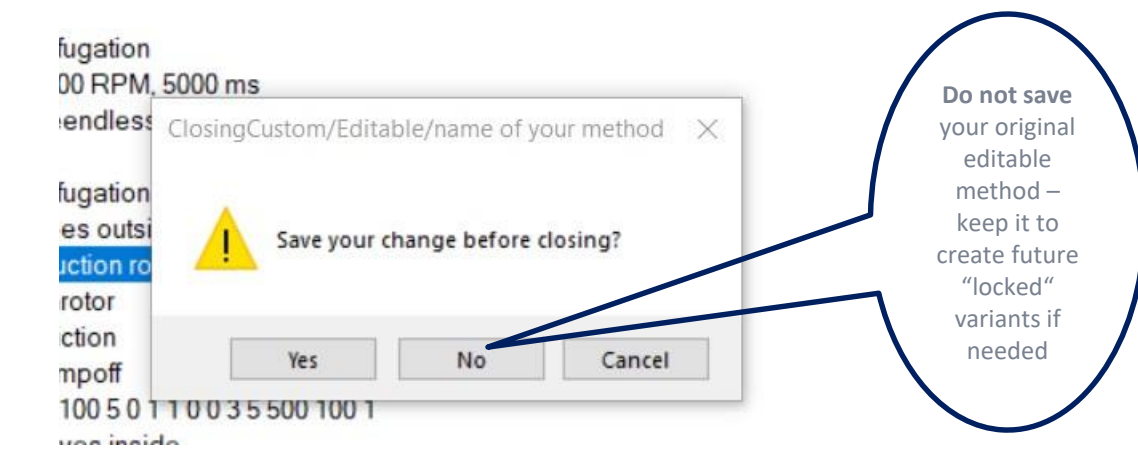
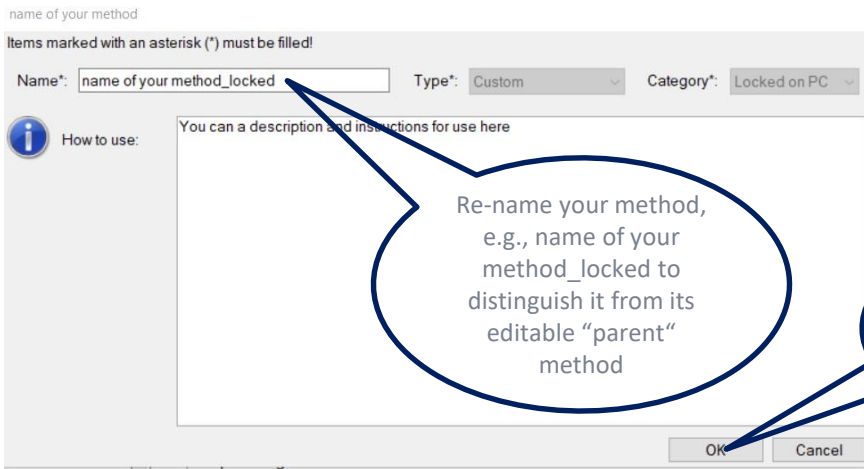
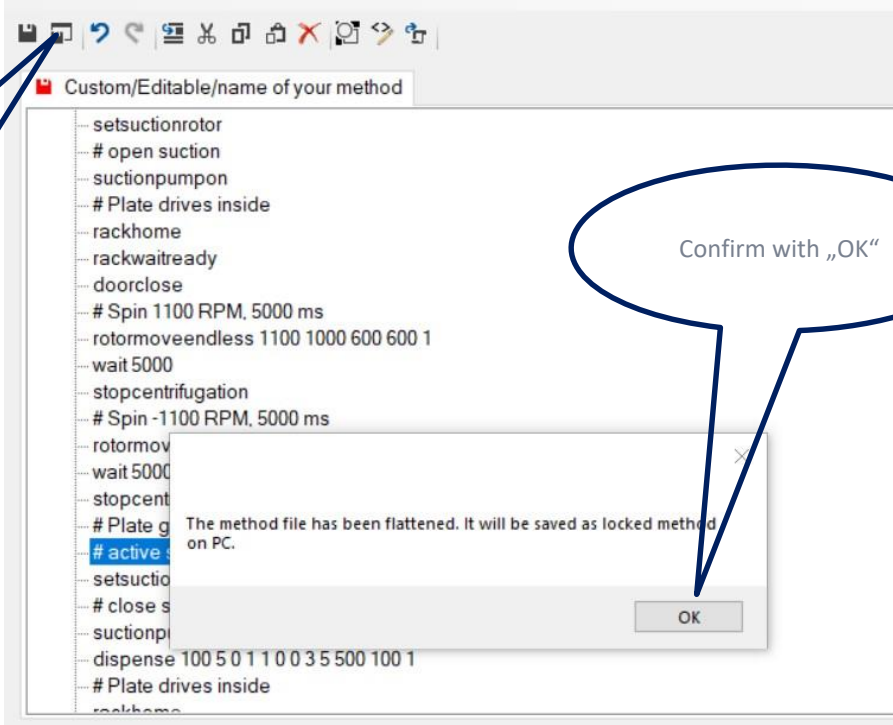
setsuctionrotor
# open suction
suctionpumpon
# Plate drives inside
rackhome
rackwaitready
doorclose
# Spin 1100 RPM, 5000 ms
rotormoveendless 1100 1000 600 600 1
wait 5000
stopcentrifugation
# Spin -1100 RPM, 5000 ms
rotormoveendless -1100 1000 600 600 1
wait 5000
stopcentrifugation
# Plate goes outside
dooropen

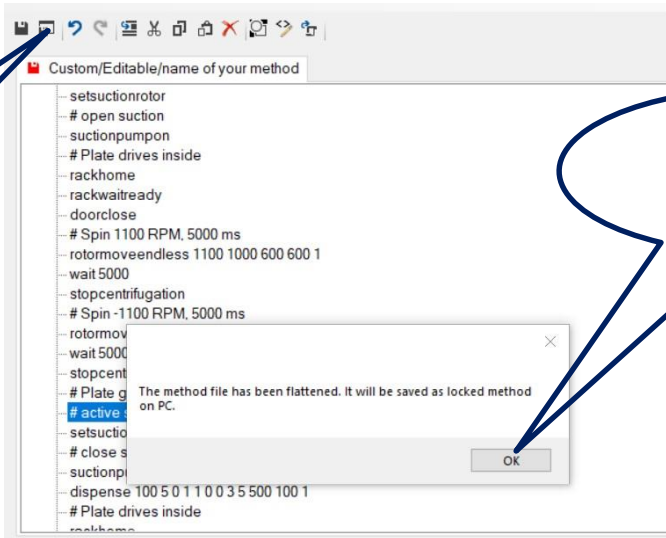
```

Copy (Ctrl + C)
Cut (Ctrl + X)
Paste (Ctrl + V)
Delete (Del)

Reduce run time of your custom method by deleting commands that cause unnecessary plate movements.

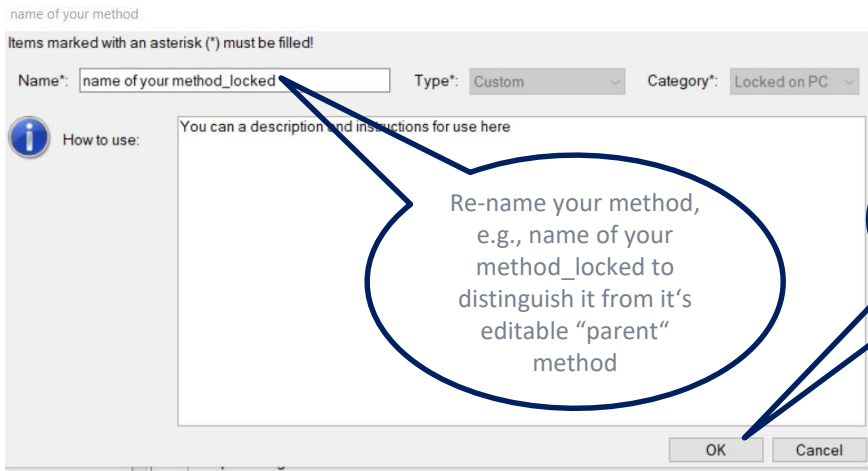
In this example, the plate moves out after evacuation, then moves in again before dispensing. Deleting the highlighted commands causes the plate to stay inside after evacuation and dispensing will start right as it moves out





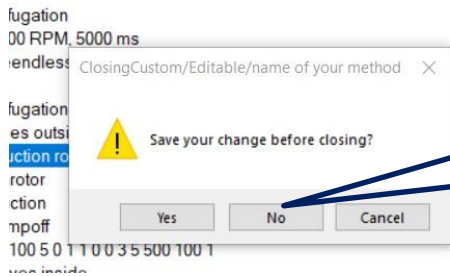
Click "Save as" icon to save your method as a locked method

Confirm with „OK“



Re-name your method, e.g., name of your method_locked to distinguish it from its editable "parent" method

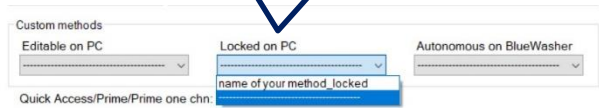
Confirm with „OK“



Do not save your original editable method – keep it for future edits

Access "Editable" version of your custom method here

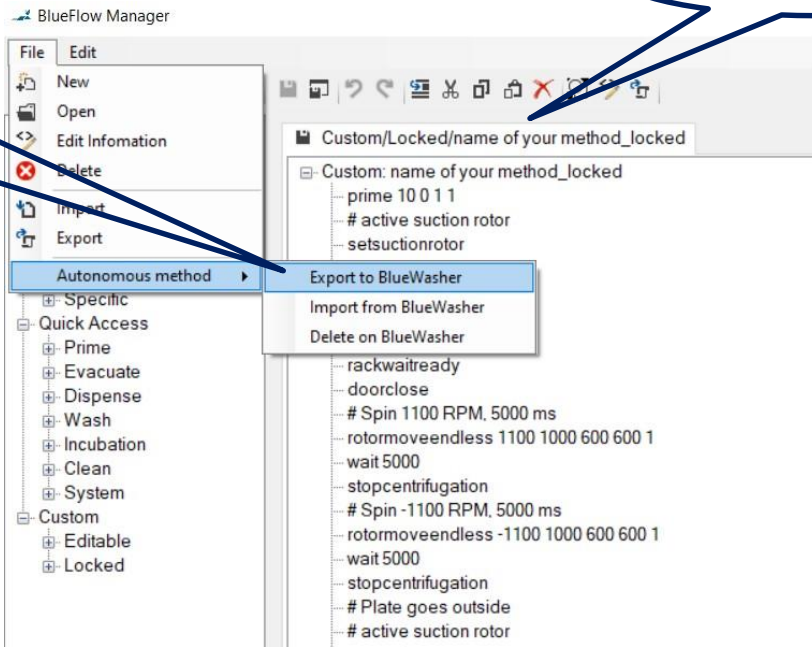
... and "Locked" version here





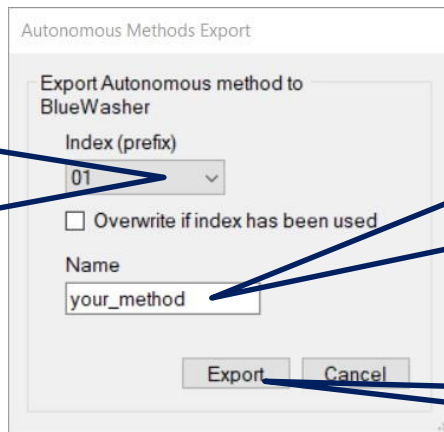
4. Create "Autonomous" custom method

Click File/
Autonomous
Method/
Export to
Blue®Washer



Open „Locked on PC“
custom method

Names of
autonomous
methods stored
on the
Blue®Washer's
Linux OS need to
start with a 2-
digit prefix. Pop-
up window
prompts you with
the first available
prefix



Enter a name for
your method (no
blanks). Name
will appear after
2-digit prefix.

Click to
start export

Your autonomous
method gets added
to pull-down

Custom methods

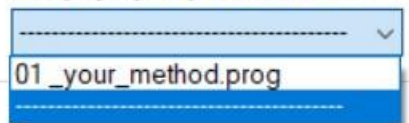
Editable on PC



Locked on PC



Autonomous on BlueWasher



Quick Access/Prime/Prime one chn: