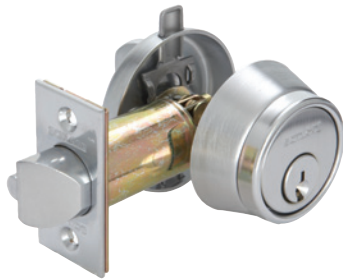


**B250 SERIES SINGLE CYLINDER DEADLATCHES**

S

**BHMA**  
CERTIFIED  
**GRADE 1**



- Fits doors 1-3/8" to 1-3/4" thick
- Deadlocking latch bolt prevents "shimming" of the latch
- "Holdback" feature retains the deadlatch in a retracted position when desired
- Stocked 2 3/4" backset with "C" keyway
- Keying: KD standard, 6 pin cylinder keyed to 5
- ANSI A156.5 Grade 1

MFG #	KEYWAY	FINISH	EZ #
<b>SINGLE CYLINDER</b>			
B250PD6 605C 12 103	C Keyway	Polished Brass	037071
B250PD6 626C 12 103	C Keyway	Satin Chrome	037072
<b>DOUBLE CYLINDER</b>			
B252PD6 626C 12 103	C Keyway	Satin Chrome	037073

**B500 SERIES SINGLE & DOUBLE DEADBOLTS**

**BHMA**  
CERTIFIED  
**GRADE 2**



**B560P626**

- Adapter rings: Trim ring with anti-pry shield standard, 2-1/2" outer diameter
- Removable to fit 1-1/2" door preps
- Exposed trim: wrought brass or bronze, reinforced with steel security insert
- Deadbolt: 1" x 2-1/4", square corner faceplate, 1" housing diameter, 1" throw
- Strike: 1-1/8" x 2-3/4", square corner, box
- Backset: Adjustable for 2-3/8" or 2 3/4"
- Keying: KD standard, 6 pin cylinder keyed to 5
- Door thickness: 1-3/8" - 1-3/4"
- Reinforcement: Metal dust box reinforcer with three 3" screws
- Certification: ANSI A156.5, 2001, Grade 2

**B571 626**

- Door bolt occupancy indicator used on washrooms



**B571 626**

MFG #	KEYWAY	FINISH	EZ #
<b>SINGLE CYLINDER</b>			
B560P605C	C Keyway	Polished Brass	088376
B560PF605C	C Keyway	Polished Brass	091228
B560P609	C Keyway	Antique Brass	090416
B560P612	C Keyway	Satin Bronze	090417
B560P613	C Keyway	Antique Bronze	090418
B560P626C	C Keyway	Satin Chrome	088377
B560PF626C	C Keyway	Satin Chrome	091227
<b>FIRE RATED SINGLE CYLINDER</b>			
B560P605E	E Keyway	Polished Brass	090414
B560P626E	E Keyway	Satin Chrome	090203
<b>DOUBLE CYLINDER</b>			
B562P605C	C Keyway	Polished Brass	088378
B562P626C	C Keyway	Satin Chrome	088379
<b>INDICATOR BOLT</b>			
B571 626	—	Satin Chrome	090441
<b>THUMBTURN DEADBOLT</b>			
B580 626	—	Satin Chrome	090234



**B580 626**