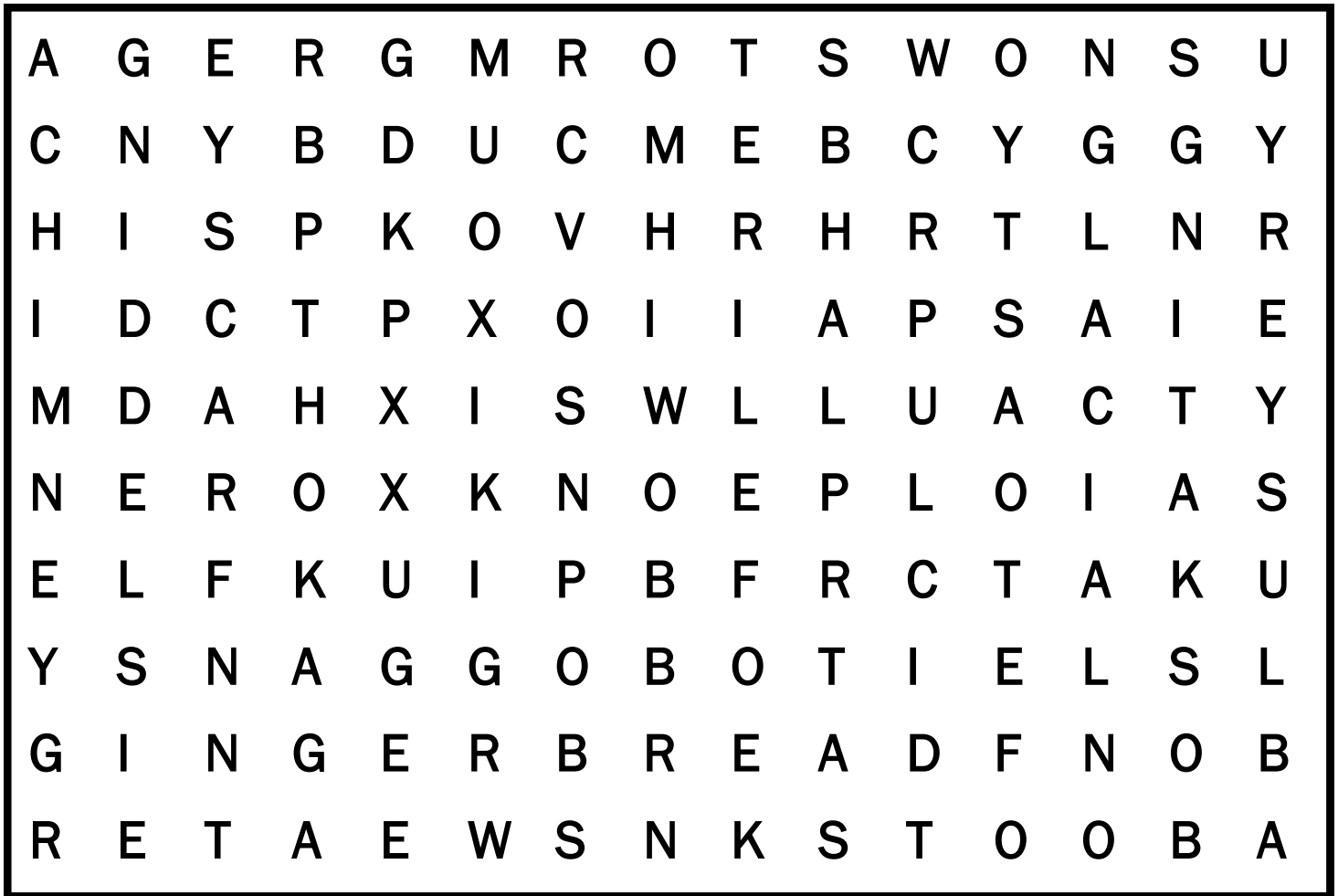


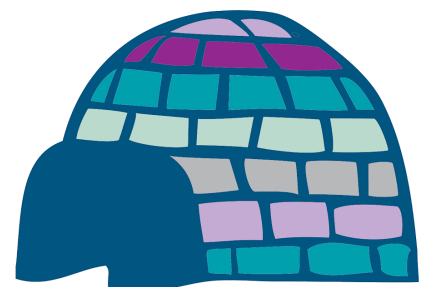
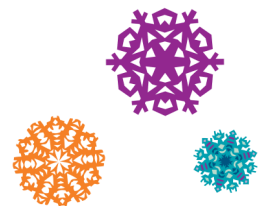


Winter's Chill



Looking for words associated with Winter. They may be spelled forward, backward, downward, upward, or diagonally.

- | | | |
|------------|---------------|-------------|
| ■ BLUSTERY | ■ GINGERBREAD | ■ SLEDDING |
| ■ BOOTS | ■ GLACIAL | ■ SNOWSTORM |
| ■ BRISK | ■ NIPPY | ■ SWEATER |
| ■ CHILL | ■ POLAR | ■ TOASTY |
| ■ CHIMNEY | ■ SCARF | ■ TOBOGGAN |
| ■ FIREWOOD | ■ SKATING | |



Visit www.seasonedtimes.com. We are not old, we are seasoned!