

ASSESSOR'S MAP

SHOWING ZONING DISTRICTS

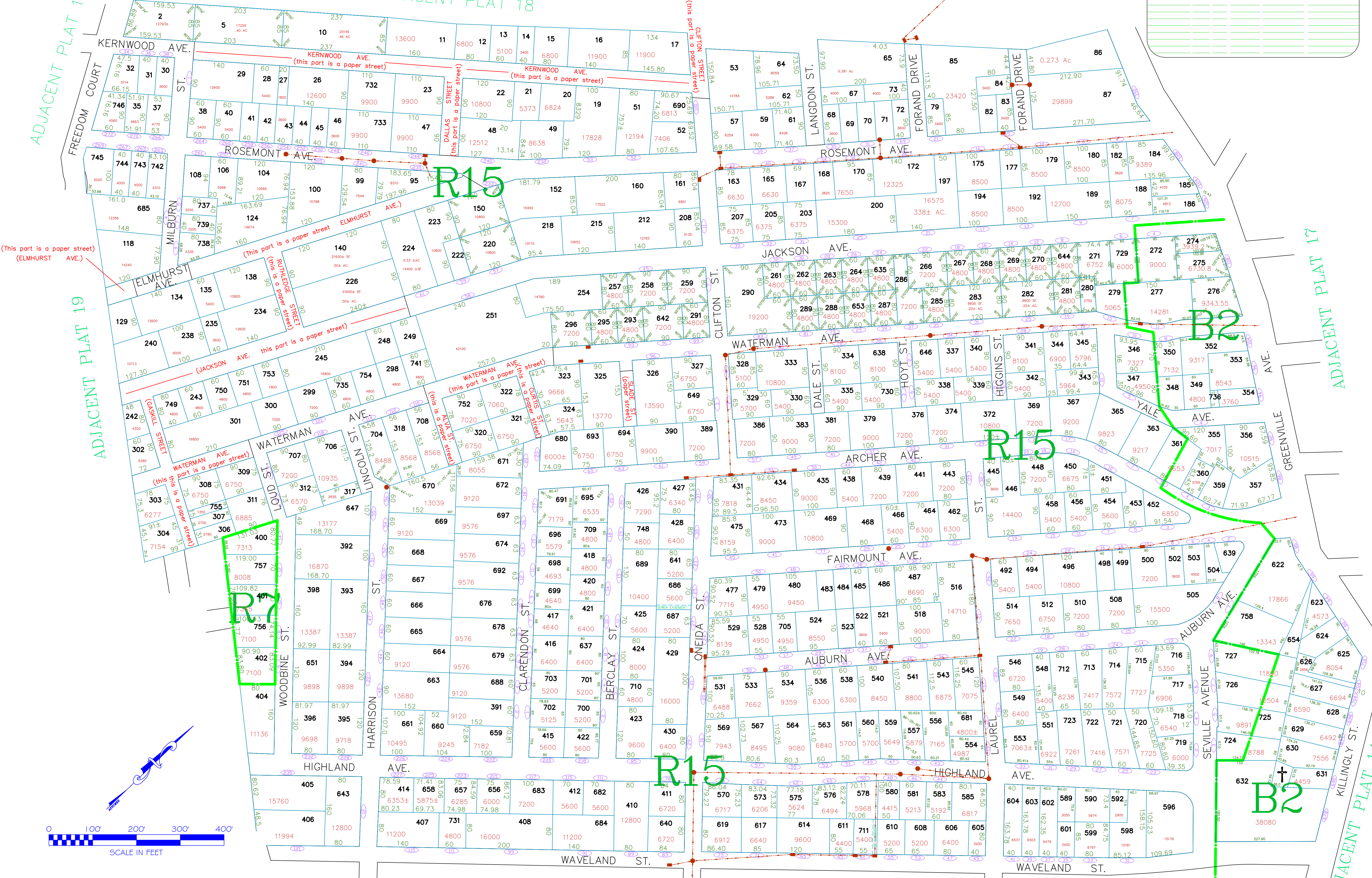
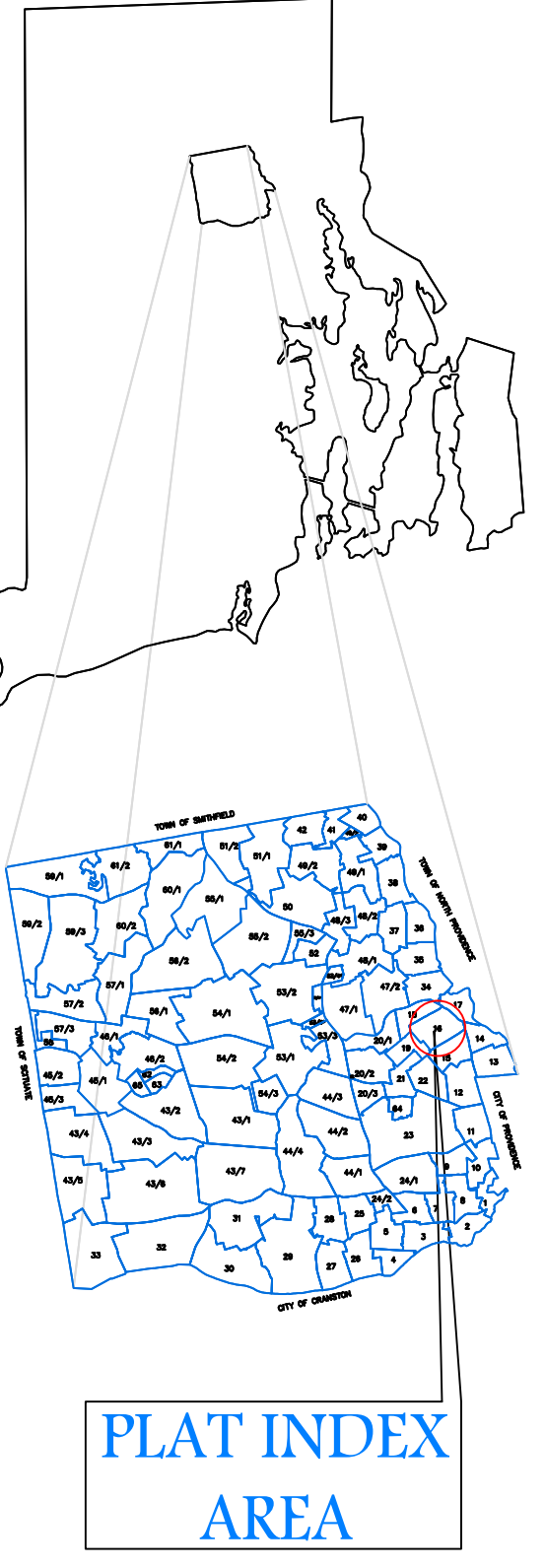
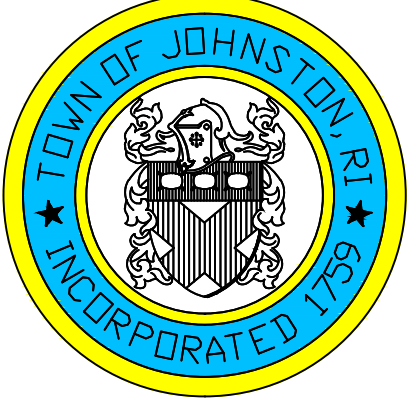
ADJACENT PLAT 18

AMENDMENTS					
LOT(S)	FROM	TO	ORDIN. #	DATE	NOTE
400-402	R15	R7	854	1/13/92	-

Assessor's Plat Number

16

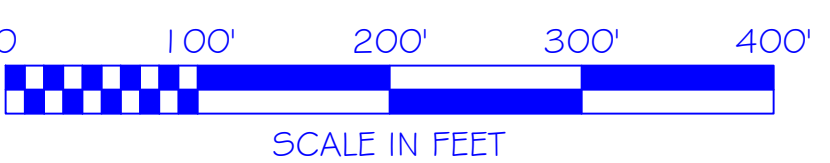
STATE OF RHODE ISLAND
 TOWN OF JOHNSTON
 PROVIDENCE COUNTY
 INCORPORATED 1759
 ASSESSOR'S OFFICE
 1385 HARTFORD AVENUE
 JOHNSTON, RHODE ISLAND
 02919



(This part is a paper street)
(ELMHURST AVE.)

ADJACENT PLAT 19

ADJACENT PLAT 17



Scale: 1:100
 Revised By: Benjamin Ng
 Last updated: January 04, 2016
 Date printed: January 04, 2016
 For copies of plat maps, please go to the DPW at 100 Irons Avenue Johnston Rhode Island. Thank you.

NOTE: This map was prepared for the use of the Town of Johnston for assessment and illustrative purposes only. It does not represent a survey of the premises. No liability is assumed as to the sufficiency or accuracy of the data delineated hereon.