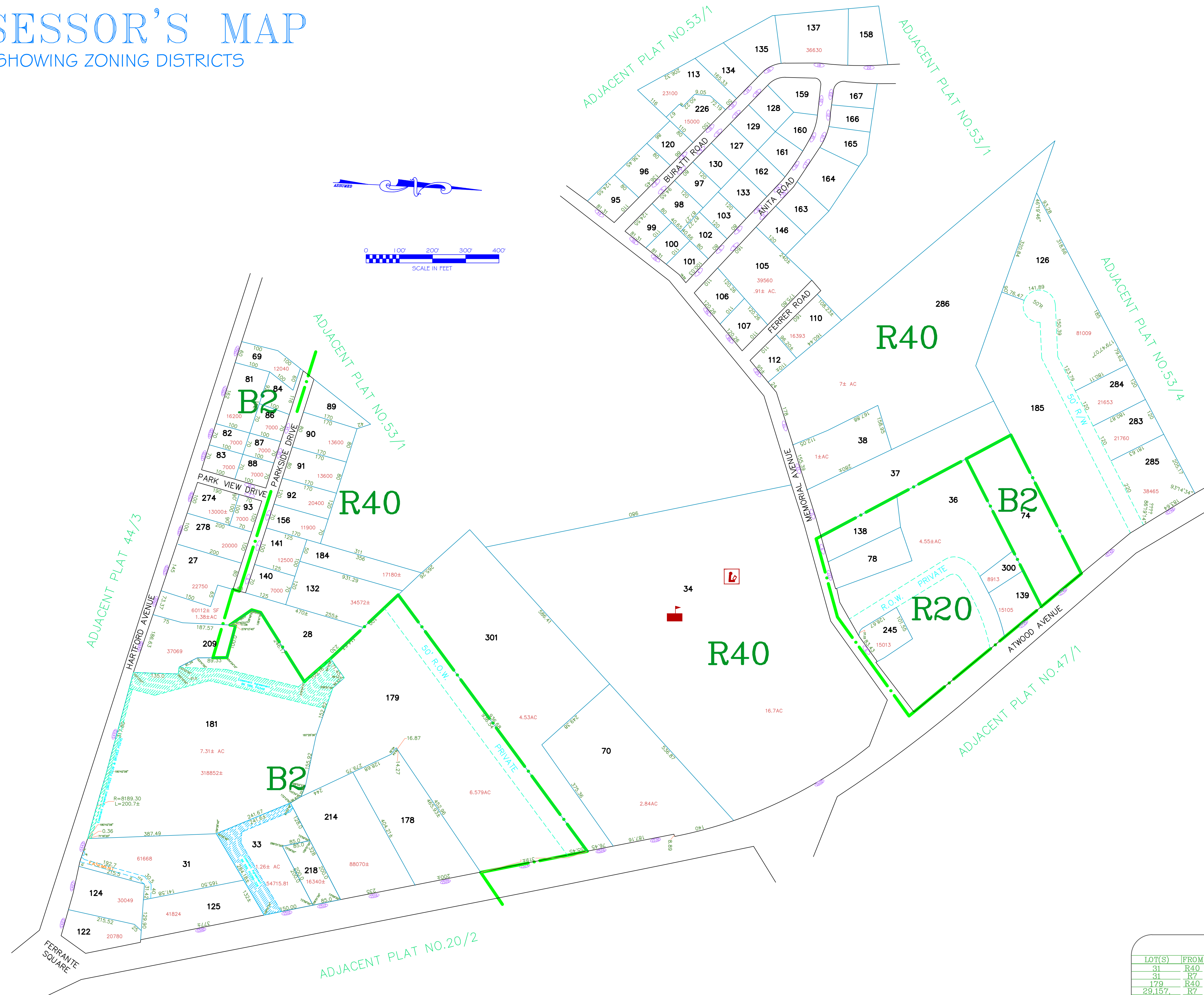
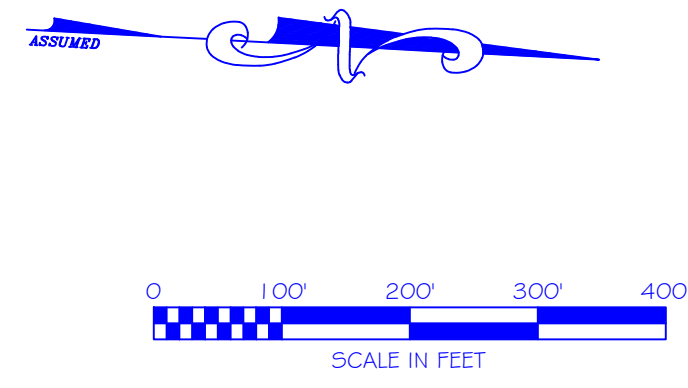


# ASSESSOR'S MAP

SHOWING ZONING DISTRICTS



AMENDMENTS					
LOT(S)	FROM	TO	ORDIN. #	DATE	NOTE
31	R40	B2	462	4/13/81	--
31	R7	B2	553	11/13/84	--
179	R40	B2	807	3/12/90	--
29,157	R7	B2	874	9/14/92	--
180,181	R7	B2	874	9/14/92	--
30,33,143	R40	B2	940	4/26/95	--
74	R20	B2	1010	8/12/97	--

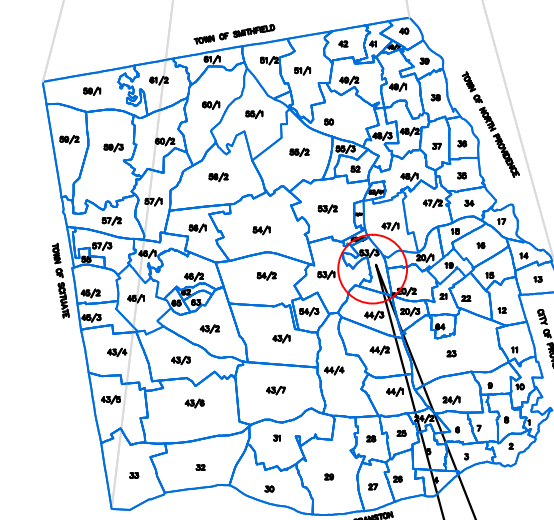
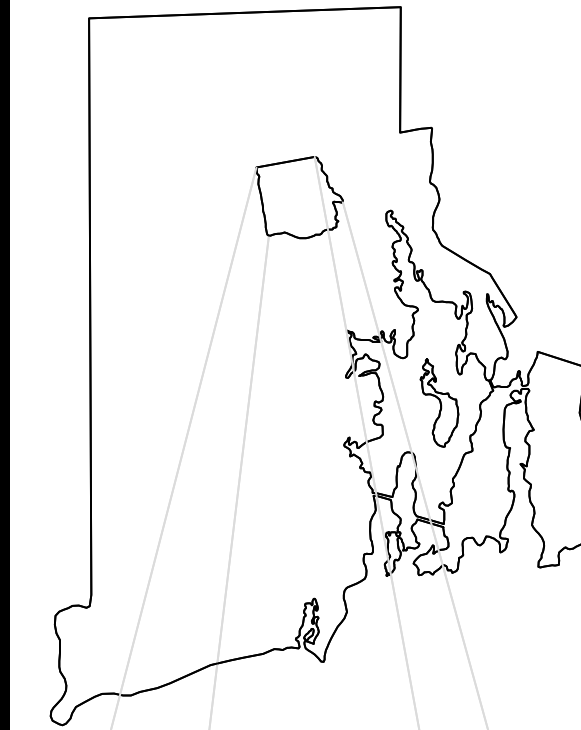
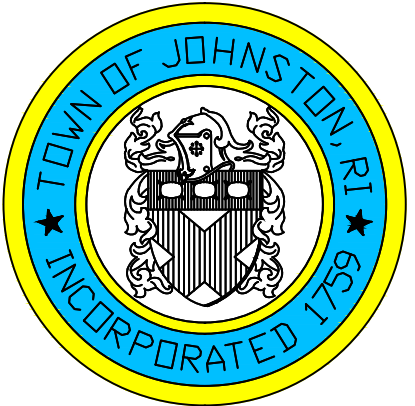
Assessor's Plat Number

# 53/3

STATE OF RHODE ISLAND  
TOWN OF JOHNSTON

PROVIDENCE COUNTY  
INCORPORATED 1759

ASSESSOR'S OFFICE  
1385 HARTFORD AVENUE  
JOHNSTON, RHODE ISLAND  
02919



PLAT INDEX  
AREA

Scale: 1:150

Revised By: Benjamin Ng

Last updated: January 05, 2015

Date printed: January 04, 2016

For copies of plat maps, please go to the DPW at 100 Irons Avenue Johnston Rhode Island. Thank you.

NOTE: This map was prepared for the use of the Town of Johnston for assessment and illustrative purposes only. It does not represent a survey of the premises. No liability is assumed as to the sufficiency or accuracy of the data delineated hereon.