

MEET *the* NETWORK TEAM



Steven Cook
Network Manager



Sarah Graham
Service Improvement
Facilitator



Stephen Littleson
Data Analyst



Dr Richard Browne
Co-Medical Lead



Dr Sajid Khan
Co-Medical Lead



Emma Graham-Clarke
AHP/ HCS Lead



Kirsty Datson
Lead Nurse

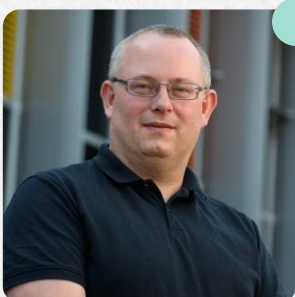


MEET *the* SPEAKERS



Keynote –Kate Tantom BEM

Kate is a senior specialist rehabilitation sister working at Derriford Hospital in Plymouth, Devon. Dedicated to innovative improvements in rehabilitation, Kate has been recognised with a British Empire Medal for her work in raising awareness of the realities of rehabilitation and the advantages nature can bring.



Dr Keith Cooper

Keith is an Associate Professor in Emergency and Critical Care, based in the Emergency, Prehospital, Perioperative and Critical Care (EPPiC) research group at Warwick Clinical Trials Unit. His research focuses on the entire patient journey of critically ill patients from the pre-hospital setting to post-discharge care. He continues to work clinically as a critical care outreach nurse practitioner at University Hospitals Birmingham NHS Foundation Trust.

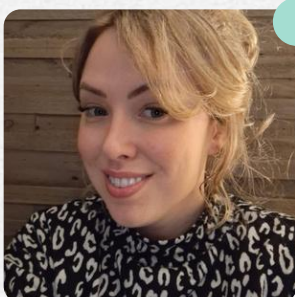


Daniel Hodgkiss

Dan joined Health Innovation Network in 2019 and leads the national Managing Deterioration and Martha's Rule Programme for the West Midlands and is one of the national co-leads, providing support to design deterioration approaches which are then shared across the country. Daniel has a real passion for developing positive safety cultures in health and social care.

Professor David McWilliams

David is a Professor of Critical Care and Rehabilitation and Clinical Academic Physiotherapist at University Hospitals Coventry and Warwickshire NHS Trust and Coventry University's Centre for Care Excellence. He is the chair of the physiotherapy working group for the European Society of Intensive Care Medicine, and Chair for the Intensive Care Society National Rehabilitation Collaborative.



Katie Blackwood

With 12 years of nursing experience, including 7 in Intensive Care in Plymouth, Katie now works as an ICU Rehabilitation Nurse. Her personal experience as a cancer survivor and former ICU patient drives her passion for supporting others in recovery.



Dr Richard Browne

Richard is a Consultant in Intensive Care Medicine and Pre-hospital Emergency Medicine at Queen Elizabeth Hospital Birmingham and the Medical Director of ACCOTS. He is also a member of FICCM ACCP sub-committee and co-medical lead for the West Midlands Adult Critical Care Network.



Mark Wilson

Mark is an Advanced Nurse Practitioner for critical care outreach at Royal Berkshire Hospital. As an executive board member for the National Outreach Forum, he is committed to advancing best practices in patient care. He is currently the Clinical Lead for Deterioration and Martha's Rule implementation for Health Innovation Oxford and Thames Valley, driving forward patient safety and clinical outcomes.



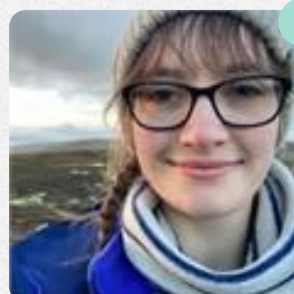
Sam Harris

Sam is a FICM ACCP at Birmingham Heartlands Hospital. Sam has a deep passion for education, human factors and resuscitation. With a rich background in emergency medicine and critical care, Sam brings a unique insights following a career pathway into advanced critical care practice.



Bill Allen

Bill is a Lead Advanced Critical Care Practitioner at Royal Wolverhampton NHS Trust with over 20 years experience as an ACCP, helping to set up multiple ACCP workforces in different hospital trusts. He is a member of FICM sub-committee and has a background as a paramedic and nurse, trained in the army where he is the Deputy Medical Director of the NATO Allied Rapid Reaction Corps.



Madeleine Varley

Maddy is a sister working in the ICU Rehabilitation Team at Derriford hospital, Plymouth. She has been working in critical care since 2015 and stepped in the ICU rehabilitation role in 2022. Maddy is passionate about recovery after critical illness and ensuring patients not only survive their ICU experience, but thrive.

MEET *the* SPEAKERS



Dr Purnima Narasimham

Purnima is a ST7 anaesthetic trainee from Birmingham School of Anaesthesia with an interest in advancing sustainable and cost-effective healthcare. She is passionate about driving small, impactful changes and has undertaken various projects that have demonstrated tangible improvements in healthcare practices. Purnima is an active member and currently, also the Lead for Green Anaesthesia and Intensive Care Network – West Midlands.



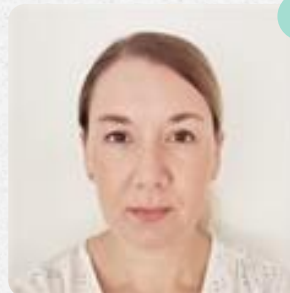
Sally Rudge

Sally is an ICU sister at Worcestershire Acute Hospitals and a part time ICCA system manager. As part of their ICU sustainable digital transformation project Sally was instrumental in developing an award-winning digital solution.



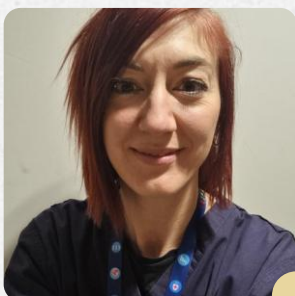
Claire Willman

Claire is an ICU sister at Worcestershire Acute Hospitals and a full time ICCA system manager and instrumental in developing an award-winning digital solution in their adult critical care unit.



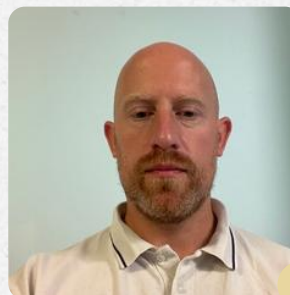
Dr Nicola Baker

Nicola is a Principle Clinical Psychologist for Intensive Care Services at Midlands Metropolitan University Hospital (MMUH).



Dr Lorna Owen

Nicola is a principle clinical psychologist for Critical Care University Hospitals of North Midlands.



Jon Weblin

Consultant Physiotherapist for Queen Elizabeth Hospital (University Hospitals of Birmingham).



Xana Marriott

Senior Sister in the Sepsis Outreach Response team at Walsall Manor Hospital.



Joanna Mann

Practice Development Sister, Professional Nurse Advocate and ICU Follow Up Lead for Heartlands, Good Hope and Solihull Hospitals (University Hospitals of Birmingham).



Lucy Powell

Critical Care Rehabilitation Co-Ordinator for University Hospitals of North Midlands