



FW2022



FW2025

PLACARD HOLDERS

PART #	ITEM
FW2022	Aluminum Placard Holder
FW2025	White Aluminum Placard Holder

Pre-Punched holes with riveted construction
S.S. Spring clip-holds placards in place. Sold in quantities of 60 per box



FW2027

PLACARD HOLDER CLIPS

PART #	ITEM
FW2027	S.S. Placard Holder Replacement Clip

S.S. Clips sold in quantities of 100 per bag



FW2023

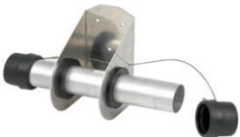


FW2026

SPLIT PLACARD HOLDER

PART #	ITEM
FW2023	Aluminum Split placard
FW2026	White Aluminum Split Placard Holder

Aluminum "Split" Placard Holder Complete with S.S. Clip (60 per box)
Corrosion resistant "Split" placard, Unpainted die stamped aluminum



TUBE DOCUMENT HOLDER

PART #	ITEM
FW1011	Tube document holder
FW1011C	Replacement End Cap

Predrilled brackets and all weather EPDM rubber cap on both ends
Sturdy aluminum construction, corrosion resistant



ROUND TWIST LOCK & SNAP-ON LIDS

PART #	ITEM
FW5049	4" Round Holder w/ twist-lock type lid
FW5049L	4" Replacement twist lock lid w/ gasket

PART #	ITEM
FW5050	4.5" Round Holder w/ snap-on type lid
FW5050L	4.5" Replacement twist lock lid w/ gasket

Round plastic document holder with twist-lock or snap-on lids
Plastic seals tightly to keep documents safe and dry



MANIFEST BOX

PART #	ITEM
FW5051	Weatherproof Manifest Cover Box

Holds permits, logs, registration and manifests
Stainless Steel latch, hinges and internal document clip
Dimensions: 8"X13"X1.5" (Outside size) 6.5"X11.5X1.25" (Inside size)