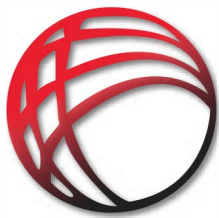




T. CARSON AND COMPANY

"CONVEYING A WORLD OF SOLUTIONS"

TEL: 719 488 0335 • FAX: 719 488 0335 • P.O BOX 995 MONUMENT, CO 80132



T. CARSON AND COMPANY
"CONVEYING A WORLD OF SOLUTIONS"

TEL: 1.800.377.7135

FAX: 1.719.488.0335

WWW.TCARSONCO.COM

P.O. BOX 995 MONUMENT, CO 80132

T. CARSON PRODUCT LINE

T. Carson and Company has been providing material handling solutions for the mining, aggregate, power, cement and manufacturing industries for more than 25 years. We convey solutions to customers in the United States, Canada, Central and South America and Mexico. Our products meet and or exceed all Industry standards.

ELI-FLEX

RUBBER/URETHANE/PVC REPAIR RESIN

- FR909N60 ELI-FLEX easy repair
- FR1510 Protek-A-Splice

MLT

Conveyor Belt Fasteners

- Super Screw Splice
- MS Fasteners
- Light Weight Fasteners

MULHERN BELTING

Conveyor Belt

- Belt Fabrication
- Rubber and Thermoplastic
- Belt Lacing

ELI-FLEX

MLT
Minet Lacing Technology



PRO ONE

EXTREME LUBRICANTS

- Fuel Maximizer
- Heavy Duty Oil Stabilizer
- Greases & More

WHEEL CHOCKS

HIGH QUALITY URETHANE

- All sizes for trucks, trailers and haul trucks
- Meets OSHA requirements

ADDITIONAL PRODUCTS

WEAR/ABRASION PRODUCTS

- Ceramic Idlers
- Ceramic Fabrication/Tile
- Rubber
- Urethane

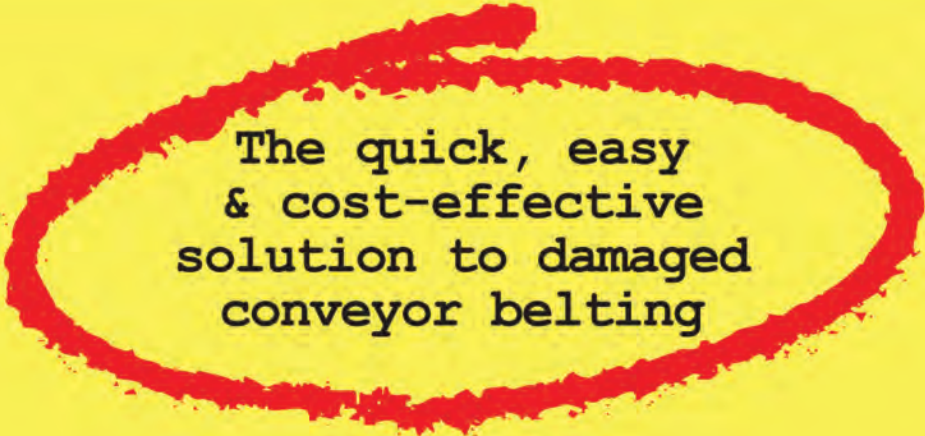


ELI-FLEX



CONVEYOR

BELT & RUBBER REPAIR RESIN



The quick, easy
& cost-effective
solution to damaged
conveyor belting

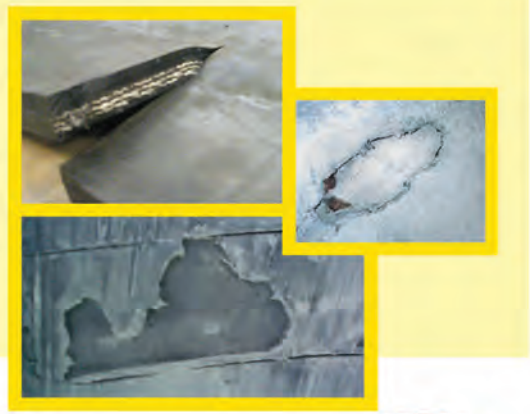
✓ User Checklist

- ✓ Easy to mix & apply - "Side by side" two-component packaging simplifies handling.
- ✓ Pre-measured twinpack assures proper mixing ratio every time.
- ✓ Excellent flexibility and impact resistance.
- ✓ High tear and abrasion resistance
- ✓ Broad spectrum chemical protection.
- ✓ No special tools or equipment required.
- ✓ Low irritation potential (No protective clothing or special training required).
- ✓ Flame retardant and non-shrinking.
- ✓ Liquid version can be cast or applied by brush, paste version is applied by trowel.
- ✓ Convenient packaging with four kit sizes available.



WHAT DAMAGE ON CONVEYOR BELTS CAN THIS STUFF FIX

Holes, tears, cuts, splits, gouges, rips, longitudinal / lateral cracks, sidewall repair, worn edges, exposed fabric carcass, exposed steel cables / steel cord, sealing clip joints / fasteners, filler strips, worn lagging patches, fraying or stringing, re-building cleats, chevrons, profiles, etc.



HOW DOES THIS STUFF WORK



Step 1

The Conveyor belt or rubber surface must be clean, dry and rough. Use a hand-held belt scratcher, stiff-bristle wire brush or electrical grinding disc (use slowest speed setting).



Step 2

Open the resin pack by cutting the aluminium foil along the marked lines.

Step 3

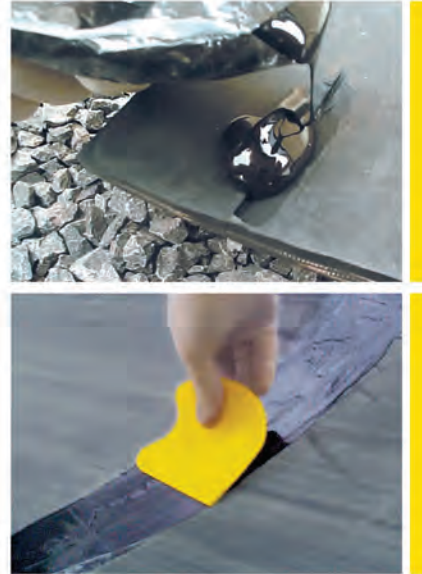
Once the resin pack is out of the foil sleeve, grasp both sides and gently pull apart until the separator pops up.

Carefully slide out the separator and remove the divider clip.



Step 5

Cut open any corner of the resin pack and squeeze out the resin on to the damaged surface area.



Step 4

Mix by kneading and squashing the resin pack together until it starts to warm up (3 - 4 minutes).

To ensure a homogeneous resin mix, use the plastic clip to move the resin from the corners of the resin pack towards the centre.

Step 6

Smooth the resin to the desired level using a flat edged implement e.g. putty knife or Eli-Flex spatula (available on request). Leave to cure (see below for curing times).

2 - 2½ hours	@ 25°C (77°F)
2½ - 3 hours	@ 18°C (65°F)
3 hours	@ 10°C (50°F)
5 hours	@ 5°C (41°F)



WHAT ELSE CAN I DO WITH THIS STUFF

Off-road *tire* repair (quarry vehicles, tractors, diggers, graders, etc.), patch linings in chutes, tanks, pipes, and truck beds, mending rubber / polyurethane screen decks, rubber castings / mouldings, marine fender repairs, rubber lining, watertight sealing, vehicle anti-roll bar repair / rebuilding (buses, trucks etc.).



Clip joint sealing



Anti-roll bar repairs
on trucks and buses



Off-road tire repairs



FR909 N60 PASTE & LIQUID

KEY DATA

PROPERTY	RATING	WHY IMPORTANT?
Setting Time @ 25°C (77°F)	25 – 30 minutes	Minimises downtime to 60 minutes @ 25°C (77°F)
Coverage	0,9 m ² / kg (4,4ft ² / lb)	Cost efficient coverage
Hardness (24 hrs) @ 25°C (77°F)	Shore A 60-65 for paste Shore A 55-60 for liquid	Tough, yet still flexible even at low temperatures
Tensile Strength	585Lb/sq.inch for paste 990Lb/sq.inch for liquid	Withstands stretching forces
Elongation	190 % elongation (paste) 195 % elongation (liquid) at breaking point	Will not 'pop' out as belt wraps around pulleys
Tear Resistance	800Lb/sq.inch for paste 900Lb/sq.inch for liquid (DIN 53515)	FR909 N60 will resist strong tearing forces



WHAT DO CUSTOMERS SAY ABOUT ELI-FLEX? (taken from actual conversations or correspondence)

ELI-FLEX FR909 N60 PASTE & LIQUID

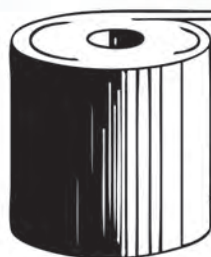
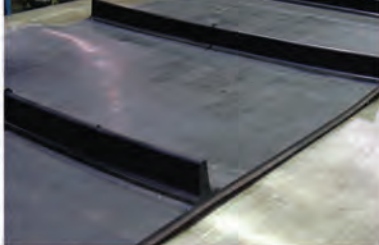
- "The most unique concept in belt repair ever" — Shaw Almet, Canada / U.S.A
- "...We have used Eli-Flex in the most severe quarrying conditions and have found the results to be outstanding in both performance and ease-of-application" — Neil Black, Area Manager, Rema TipTop U.K.
- ".... Quick and easy belt fixer" — Martin Engineering, U.S.A
- "We are liking Eli-Flex - so easy to mix" — Contitech, Deutschland
- "...your product Eli-Flex to repair of holes in conveyor belts, we were very impressed at how easy it is to operate...." — Elser Filippi, Italy
- "...We have tested it and it looks very good on many types of damages" — Arne Kenneth Øvstebø, Team Tomca, Norway
- ".... Thank you for this product called Eli-Flex. It is good to us" — Teluk Sepang Quarry, East Malaysia
- "I've been in the conveyor belt maintenance business for over 25 years. Eli-Flex is the best product I've ever used! The minimal need for surface preparation and the 'all in one' packaging are terrific!" — Tim McLaughlin, Colorado, U.S.A
- "... Eli-Flex is unique. It's in the bag! I think Eli-Flex is the next best thing to sliced bread in ease-of-use" — Mike, MRC, Northern Ireland
- ".... We poured out some Eli-Flex on to galvanised steel. Next day it was not possible to rip it off. The zinc layer left the steel and all zinc was stuck on the Eli-Flex. I believe the Eli-Flex is magic" — Mr Bertil Wahren, Primogum, Sweden
- ".... I like to use it wherever I can on belts, Eli-Flex is good stuff!" — Brian, RTI, U.K
- ".... man, I have never seen stuff stick like this Eli-Flex to our belts" — Dirk, Narviflex, Belgium
- "... Eli-Flex is the best repair resin for conveyors that we have ever seen in our country" — BARU, Netherlands
- ".... We always use it when we have a problem on our conveyors" — Conveyor Services, U.S.A
- "... Results are always excellent" — Peter Hughes, Lothian Vulcanising, Scotland
- ".... The workable characteristics are superior" — Michael Haupt, Mato, Deutschland
- ".... when a belt is broken Eli-Flex is all we use" — Julio Romero, Equimin, Chile



DISTRIBUTOR DETAILS:

SUPPLIED BY: T. CARSON AND COMPANY (800.377.7135)
WWW.TCARSONCO.COM





**MULHERN
BELTING, INC.**

Mulhern Belting is one of the largest conveyor belting wholesalers and fabricators in the world. We partner with distributors and select OEMs to reach the End User marketplace. Our extensive inventory of hundreds of belt styles stocked in full rolls, high quality products and fabrications, on time delivery and 4 full service nationwide locations make Mulhern Belting an asset in every belt application. All of our stock is available for immediate delivery. Let Mulhern Belting be your one-stop-shop conveyor belting super store.

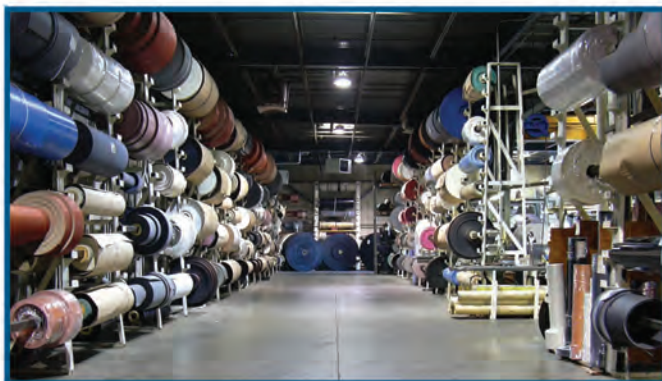
Mission Statement

Our mission is to fully meet our customer's needs by being the best provider, marketer and entrepreneurial distributor of conveyor belting and related products. We strive to conduct our business in a manner which exemplifies Mulhern Belting's values and beliefs and clearly positions us as the preferred supplier by our customers, employer by our employees, customer by our suppliers.

Drop Ship Program

Mulhern Belting will blind (3rd Party) ship your product. We will invoice you the next day via fax or email-tracking numbers and freight charges will be known immediately! We will label your order to your customer with a reorder tag with YOU as the supplier!

**Reorder Again from:
Your company name
Item # 1-2002
24' x 24"
Sold PO# - XXXX
Ship PO# -XXXX**



Inventory

Mulhern Belting features a complete line of inventory for applications as diverse as sand and gravel, printing, material handling and food processing. Visit mulhernbelting.com for our extensive list of specifications.

Visit MULHERN BELTING.COM for more information



Belt Fabrication

Mulhern Belting can build a wide range of fabrications at all of our plants. We have hundreds of years of thermoplastic and rubber belt fabrication knowledge and experience on staff. If it can be done with conveyor belting, Mulhern Belting can do it! Visit mulhernbelting.com for more fabrication information.

Lacing

We carry a complete line of Flexco Products and can install many configurations: Standard Lacing; Recessed Lacing; Hidden Lacing; Cover Flap Lacing; Plastic Rivet Lacing; Plastic Spiral Lacing

Endless

Mulhern Belting is an expert at Thermoplastic and rubber vulcanization: Lap Splices; Finger Splices; Double Finger Splices; Skived Splices; Stitched Reinforcement; Prepared Ends

Thermoplastic Profiles

Mulhern Belting fabricates a complete array of Thermoplastic Profiles: Tee Cleats; Beefy Cleats; Scoop Cleats; Thin Line Cleats; Fabric Reinforced Cleats; Curved Cleat Patterns; Chevron Cleat Patterns; V-Guides; Flanges; Lugs; Sidewall with and without a foot.

Rubber Profiles

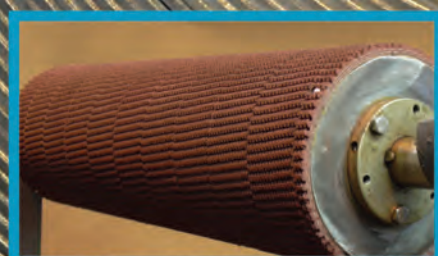
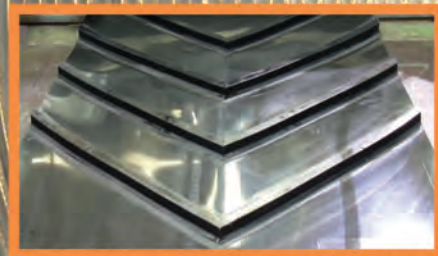
Mulhern Belting can hot vulcanize many rubber profiles in several compounds: Sidewall; Tee Cleats; SI Cleats; Scoop Cleats; Lugs; V-Guides; Flanges; Chevron Patterns; Bucket Patterns; Versa Patterns

Hole Punch

Mulhern Belting punches belting for bucket elevators and perforations

Specialty Fabrications

Mulhern Belting is an expert at specialty belt fabrications: Longitudinal Splicing; Covered Timing Belts and V-Belts; APC Belts; Capped Edges; Pulley Lagging; Loop Belts; Teflon Fiberglass Mesh Belts; Grooved and Beveled Belts; Splice Kits



Visit **MULHERN BELTING.COM** for more information



MULHERN BELTING

Phone: 1-800-253-6300

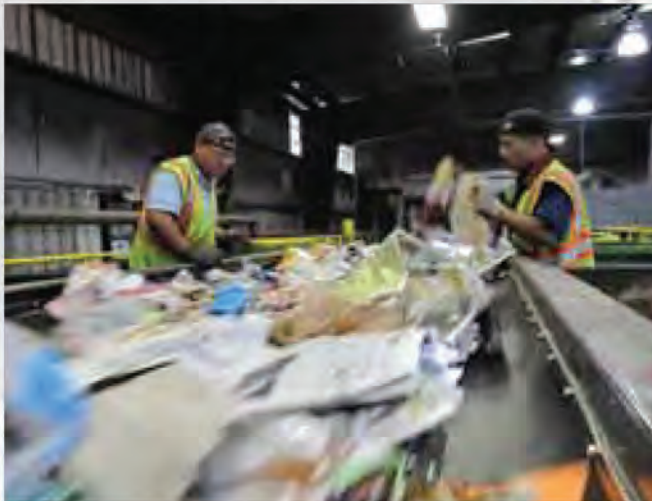
Email: sales@mulhernbelting.com

Fax: 1-201-337-6540

www.mulhernbelting.com



Recycling is Our Specialty



Recycling facilities require a wide range of belting specifications and Mulhern Belting carries them all; conveyor belting engineered and manufactured for the recycling industry.

Whether your customer is conveying co-mingled waste, glass, aluminum or steel cans, paper, newspaper, plastic or electronics, our competitively priced Rubber, Urethane and PVC belt specifications are the bread and butter of the recycling industry.



Sortation Conveyors

Many different styles of flat belting are used throughout Material Recovery Facilities for sortation conveyors. Consult the back page of this brochure for some commonly used specifications. Mulhern Belting can install lacing or fabricate any belt to be endless.



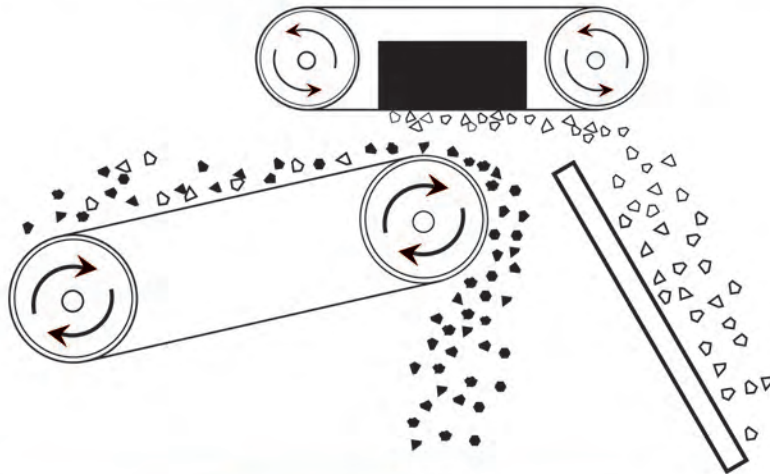
Incline/Take Away Conveyors

Mulhern Belting stocks slittable profile belts for incline applications for immediate shipment. We also fabricate PVC and Urethane cleats, Rubber cleats, Rubber lug patterns and Iron cleats. If you need to move material up an incline, Mulhern Belting can supply the belt for the job.



Eddy Current/Suspended Overhead Magnetic Separator Conveyors

Mulhern Belting manufactures belts for Magnetic Separator Conveyors. We fabricate Rubber and Urethane belting with different cleat and sidewall configurations.



Popular Recycling Profiles



Cleated Incline



Sidewall

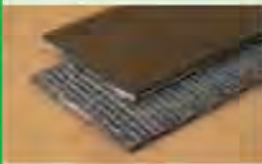




Cleats



Lug Patterns

Popular Recycling Belt Specifications

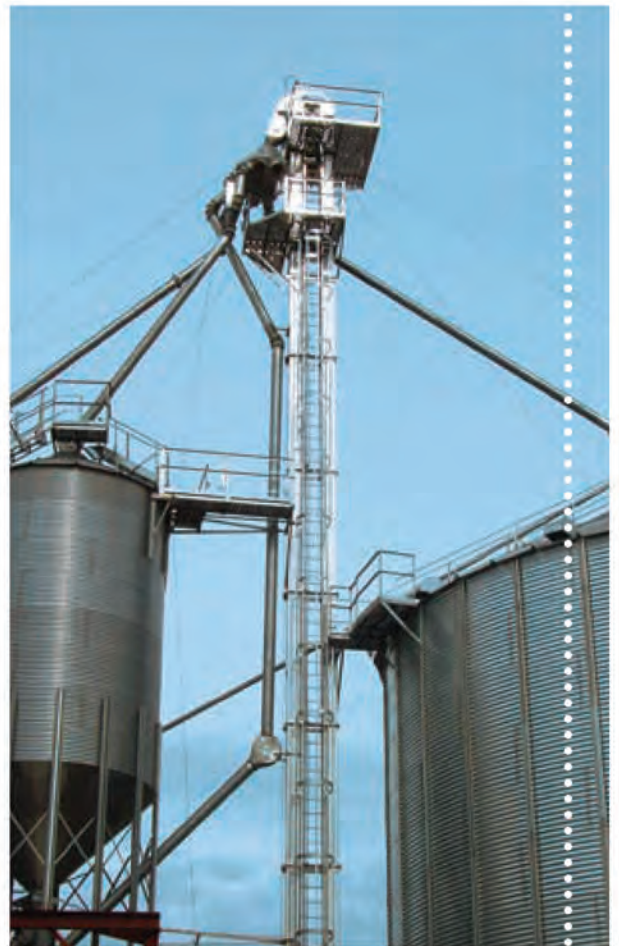
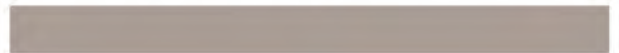
Appearance	Part #	Description	Ply	Nominal OAG	Comp.	Min. Pull	PIW	Temp.
	2-1121	B1200 COS	1	.135"	PVC	3"	120	20F-180F
	2-1151	B1500 COS	1	.160"	PVC	3"	150	20F-180F
	2-1201	B2000 COS	1	.205"	PVC	6"	200	20F-180F
	These belts feature an interwoven carcass with a smooth PVC top cover. The bottom cover is brushed for a low coefficient of friction. These specifications can be fabricated with cleats and other profiles for incline applications.							
	4-4700	R1200 URETHANE-NOVEX	1	.187"	URETHANE	4"	120	0F-185F
	4-4680	R900 URETHANE-NOVEX	1	.125"	URETHANE	2"	90	0F-185F
	These belts feature the toughest urethane top cover on an interwoven carcass. The bottom cover is bare for a low coefficient of friction. The top cover is highly abrasion and gouge resistant. Both specifications can be fabricated with cleats and other profiles for incline applications.							
	4-4002	150 1/32 x BARE	2	.125"	SBR	4"	150	-20F-250F
	5-1111	150 1/32 x 1/32 STD	2	.150"	SBR	4"	150	-20F-250F
	Both of these belts are cost competitive general conveying belts. The SBR compound is wear resistant. 4-4002 features a bare bottom cover for slider belts and 5-1111 (not pictured) has a 1/32" bottom cover for roller beds. They can both be fabricated with cleats and other profiles for incline applications.							
	5-2502	220 3/32 x BARE MOR	2	.219"	MOR	12" to 16"	220	-20F-250F
	5-2702	220 3/16 x BARE MOR	2	.300"	MOR	12" to 16"	220	-20F-250F
	These belts feature a bare bottom cover for slider bed applications and an MOR compound for Moderate Oil Resistance. Both can be fabricated with cleats and other profiles for incline applications.							
	5-2731	220 3/16 x 1/16 STD	2	.360"	SBR	12" to 16"	220	-20F-250F
	5-3731	330 3/16 x 1/16 STD	3	.410"	SBR	14" to 18"	330	-20F-250F
	These rubber specifications feature a rugged SBR compound. These belts are not recommended for use on slider beds. Both specifications can be fabricated with cleats and other profiles for incline applications.							
	5-7531	220 1/8 x 3/32 CI SBR	2	.570"	SBR	12" to 16"	220	-20F-250F
	5-7532	220 1/8 x 3/32 CI MOR	2	.570"	MOR	12" to 16"	220	-20F-250F
	These specifications feature a raised profile for incline conveying. See the Cleated Incline picture above for the complete profile. Neither belt is appropriate for a slider bed. 5-7532 is MOR for Moderate Oil Resistance.							
	5-8502	330 1/8 x BARE CI MOR	3	.570"	MOR	14" to 18"	330	-20F-200F
	5-8531	330 1/8 x 3/32 CI SBR	3	.595"	SBR	14" to 18"	330	-20F-250F
	These specifications feature a raised profile for incline conveying. See the Cleated Incline picture above for the complete profile. 5-8502 (not pictured) is moderately oil resistance and features a bare bottom for slider bed applications. 5-8531 has a 3/32nd bottom cover and is made from a tough RMA Grade 2 compound.							

This is a small sample of the available belt specifications and fabrications Mulhern Belting offers. For more information, visit www.mulhernbelting.com or call 800-253-6300.



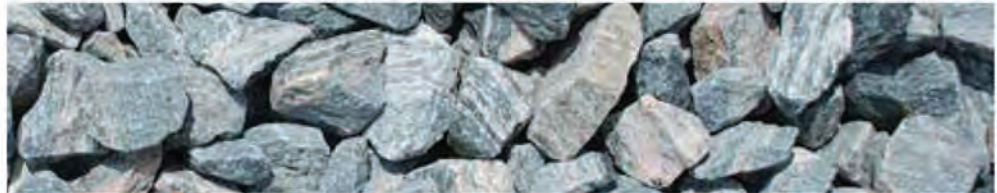
BUCKET ELEVATOR BELTING

for agricultural
& industrial conveyors





Are you conveying grains, feed, fertilizer, minerals, sugar, flour, corn, coffee, clay, sand, aggregate, coal, chemicals, cement, ores or any other material vertically in buckets?



Insist on Mulhern Belting's high performance Bucket Elevator belt for low stretch, abrasion endurance and resistance to moisture, mildew and rot.



Our premium Bucket Elevator belting features exceptional bolt retention, belt strength and resists minimum pulley flex fatigue.

.....
sales@mulhernbelting.com
mulhernbelting.com



**MULHERN
 BELTING, INC.**

.....
Phone: 1-800-253-6300
Fax: 1-201-337-6540



5-3335



5-2335



5-2731



5-4831



2-1452



2-2201



2-1352

Dozens of standard punch configurations are available. Need a custom pattern? Mulhern Belting is ready for the job on short lead times.



P-1/B-1

P-2/B-2



P-3/B-3

P-4/B-4



P-5/B-5

P-7/B-6



P-8/B-7

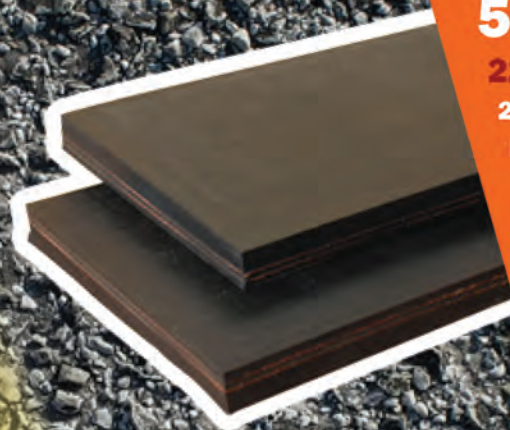
P-9/B-8



CONTACT OUR EXPERIENCED AND KNOWLEDGEABLE SALES STAFF FOR A QUOTE TODAY!

Part #	Description	Nominal OAG (in.)	Bucket Elevator Safe Work Load PIW (Mechanical Fastener)	Bucket Elevator Recommended Minimum Pulley Diameter (% of rated belt tension) (in.)			Maximum Elevator Bucket Projection (in.)	OSHA	Flame Retardant	Oil Resistant	Temp. Range
				81% - 100%	61% - 80%	<60%		<300 Meg-ohms			
2-1202	B2000 CBS	0.250	185	6	6	6	6	Yes	Yes	No	0F to 180F
2-2202	W2000 CBS	0.250	185	6	6	6	6	Yes	Yes	Yes	0F to 180F
2-1352	B3500 CBS	0.310	280	8	8	8	7	Yes	Yes	Yes	0F to 180F
2-1452	B4500 CBS	0.340	350	10	10	10	8	Yes	Yes	Yes	0F to 180F
5-2335	2 Ply 220 1/16 X 1/16 M-MOR-SC	0.215	190	16	14	12	6	Yes	Yes	Yes	0F to 250F
5-2731	2 Ply 220 3/16 x 1/16 SBR	0.360	190	16	14	12	6	No	No	No	0F to 250F
5-3335	3 Ply 330 1/16 X 1/16 M-MOR-SC	0.300	280	18	16	14	8	Yes	Yes	Yes	0F to 250F
5-3731	3 Ply 330 3/16 x 1/16 SBR	0.410	280	18	16	14	8	No	No	No	0F to 250F
5-4831	4 Ply 440 1/4 x 1/16 SBR	0.500	370	24	20	18	9	No	No	No	0F to 250F
5-2733	2 Ply 220 3/16 x 1/16 High Temp	0.360	190	16	14	12	6	No	No	No	-20F to 400F
5-3733	3 Ply 220 3/16 x 1/16 High Temp	0.410	280	18	16	14	8	No	No	No	-20F to 400F
5-2734	2 Ply 220 3/16 x 1/16 Hot Asphalt	0.360	190	16	14	12	6	No	No	Yes	-20F to 250F
5-3734	3 Ply 220 3/16 x 1/16 Hot Asphalt	0.410	280	18	16	14	8	No	No	Yes	-20F to 250F

WHERE THE RUBBER MEETS THE ROAD.



5-2734

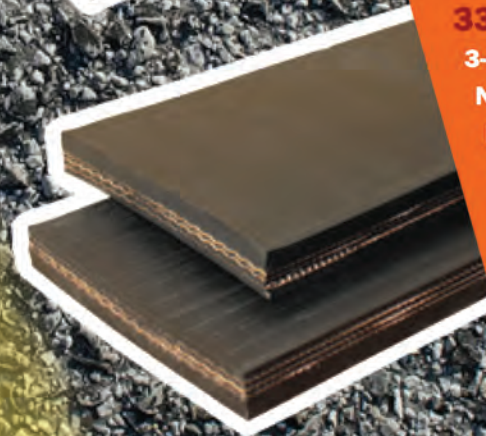
220 3/16 x 1/16 HA

2-Ply

Nominal OAG 0.360"

Min. Pulley 12"-16"

Temp. Range -20F-350F



5-3734

330 3/16 x 1/16 HA

3-Ply

Nominal OAG 0.410"

Min. Pulley 14"-18"

Temp. Range -20F-350F

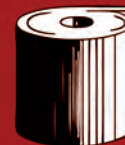
**Mulhern Belting's
Hot Asphalt belt is the
toughest, most rugged
belt in the industry. For hot
and oily applications such
as conveying hot asphalt,
oily grains and oil-treated
coal, you can trust Mulhern
Belting's Hot Asphalt belt.**

Phone: 800-253-6300

Fax: 201-337-6540

mulhernbelting.com

sales@mulhernbelting.com



**MULHERN
BELTING, INC.**



MULHERN
BELTING, INC.

Phone: 800-253-6300

Fax: 201-337-6540

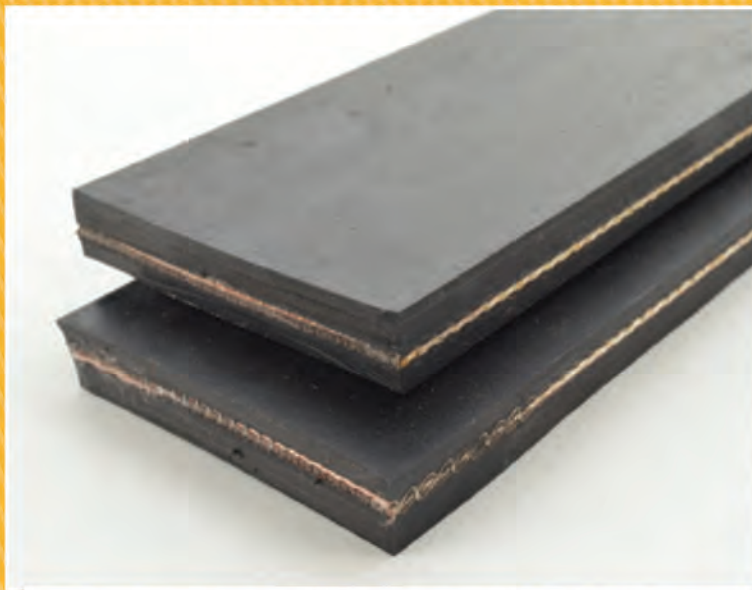
mulhernbelting.com

sales@mulhernbelting.com

**CALL FOR A
QUOTE TODAY!**

MI-FLEX STRAIGHT WARP

Part Number 5-5881 • 1/440 1/4" X 1/8"



Color: Black

Nominal OAG: 0.500" +/- .030

Plies: 1

Fabric: Polyester/Nylon

Minimum Pulley Diameter: 20"

Top Surface: 1/4" SBR

Bottom Surface: 1/8" SBR

Compound: SBR

Work Tension: 440 lbs. PIW

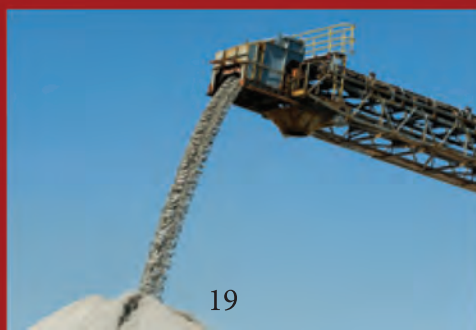
Elongation: less than 4%

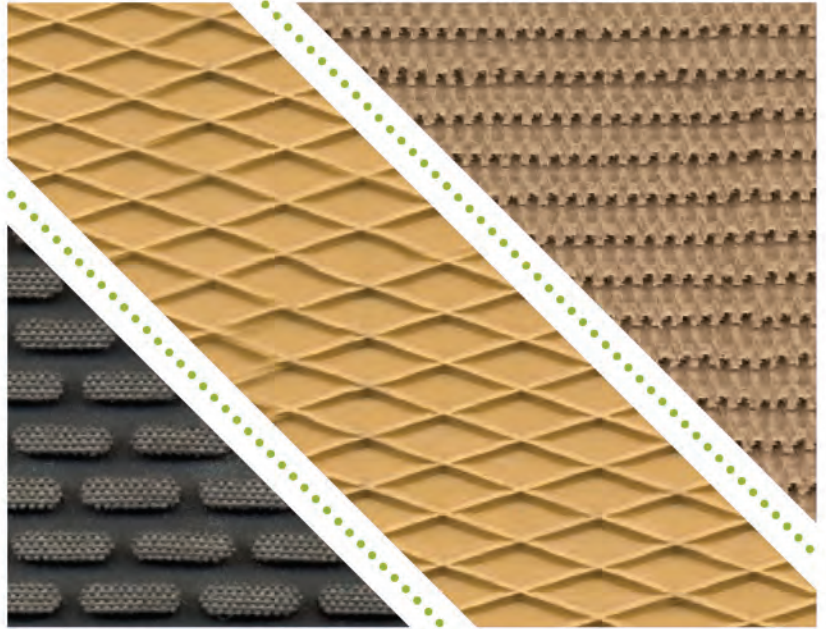
Weight P.I.W. / Ft: 0.269

Working Temperature: -20F to 250F

Joining Method: R5/R6 Lacing

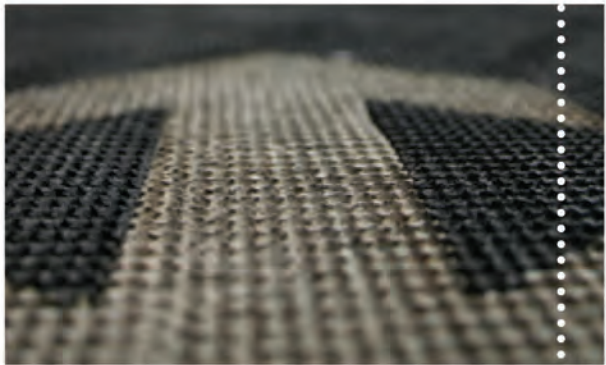
Mulhern Belting's **M-Flex Straight Warp** heavy rubber belt is used in rough applications such as conveying ore and large stone. It excels in primary crusher applications. You will find this belt in industries as diverse as log handling, recycling, scrap metal, and rock quarries. It features an impact and rip resistant straight warp construction. The carcass provides excellent lace retention as well as cut, gouge, and tear resistance. This belt will also perform well in troughing applications.





PACKAGE HANDLING BELTING

**incline belting
for every application**



RUBBER ROUGH TOP PROFILES



Part #	Description	# of Plies	Nominal OAG	Comp.	Min. Pulley	PIW
3-1102	Black Rubber Rough Top	2	0.250"	SBR	2"	150
3-1402	Tan Rough Top x Bare	2	0.260"	SBR	2"	150
3-1406	Tan Rough Top x Bare	3	0.265"	SBR	3"	200
3-1407	Gum Rough Top x Bare	4	0.350"	Natural Rubber	4"	200

PVC ROUGH TOP PROFILES



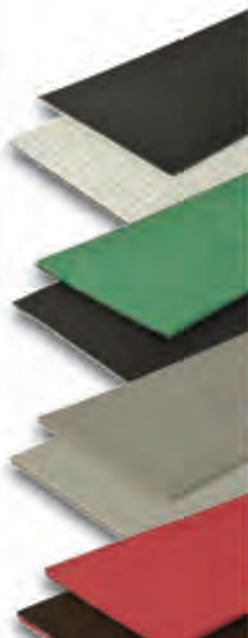
Part #	Description	# of Plies	Nominal OAG	Comp.	Min. Pulley	PIW
2-2125	W1000 PVC Rough Top HI	1	0.310"	PVC	3"	100
3-1512	B1200 PVC Rough Top	1	0.230"	PVC	3"	120
3-1514	PVC Rough Top Dark Green	2	0.220"	PVC	2.4"	51
3-1517	R1700 Red PVC Rough Top HI	1	0.340"	PVC	4"	170

DIAMOND TOP PROFILES



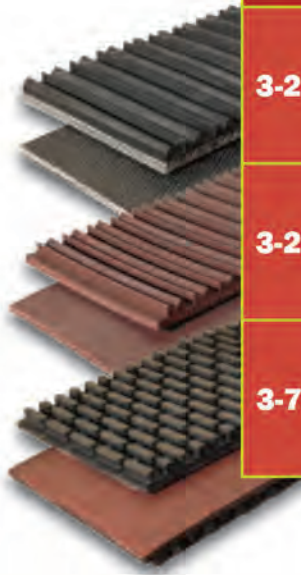
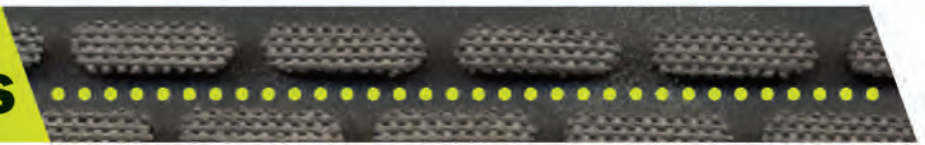
Part #	Description	# of Plies	Nominal OAG	Comp.	Min. Pulley	PIW
3-4102	Black Diamond Top	2	0.330"	Soft SBR	2.5"	120
3-4402	Tan Diamond Top	2	0.313"	Rubber	2.5"	150
3-4402G	Tan Gum Diamond Top	2	0.313"	Gum Rubber	2.5"	150
3-4403	Tan Gum Diamond Top	3	0.365"	Rubber	3"	225

LONGITUDINAL GROOVE PROFILES



Part #	Description	# of Plies	Nominal OAG	Comp.	Min. Pulley	PIW
3-1560	Black Longitudinal Groove	2	0.090"	PVC	1.2"	86
3-1550	EPDM Mono-tote	2	0.115"	EPDM	2"	70
3-1630	Gray Longitudinal Groove	2	0.110"	PVC	1.5"	100
4-1501	Red Supergrip Longitudinal Groove	2	0.125"	Natural Rubber	1.5"	105

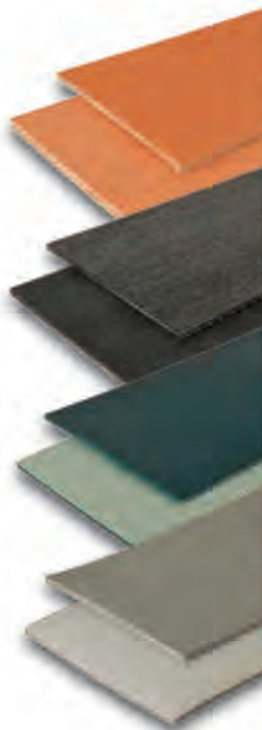
OTHER PROFILES



Part #	Description	# of Plies	Nominal OAG	Comp.	Min. Pulley	PIW
3-2103	Black V-Top	3	0.322"	SBR	2.5"	90
3-2203	Neoprene V-Top	3	0.320"	NBR	3"	150
3-7102	Steep Grade	2	0.287"	SBR	2"	150

OTHER BELTS

GENERAL CONVEYING/DIVERTING/DISTRIBUTION BELTS



Part #	Description	# of Plies	Nominal OAG	Comp.	Min. Pulley	PIW
4-4004	Slider Top	4	0.120"	NBR	2"	50
4-5000	TMIPH529FBS	1	0.120"	PVC	2"	100
4-1012	PVC x Bare Dark Green Anti-static	2	0.110"	PVC	2"	74
3-5900	P2GY Mono-Grip-S 5M/SP/ZP	2	0.090"	PVC	2"	100



Minet Lacing Technology



Mechanical Fasteners Flexible Splices

Mining Industry





Mechanical Fasteners/Flexible Splices

Mining Industry

Super-Screw®: Flexible lacing to screw!



Super-Screw® is a flexible rubber splice to screw on to the belt as an alternative to vulcanizing.

MLT specific screws are self-drilling and self-tapping (they spread the carcass threads without cutting them).

This technology allows the **Super-Screw®** to be installed regardless of the location and accessibility of the conveyor belt and weather conditions and significantly reduces downtime.



General Data Chart

Super-Screw® types	35	63	65	80	85	100	105	180	200
Belt thickness, in.	5/32	5/32 - 1/2		5/32 - 19/32		5/32 - 19/32	5/32 - 14/32	9/32 - 13/16	9/32 - 3/4
Max. belt strength, N/mm	315	630		800		1000		1800	2000
Max. belt tension, PIW	200	360		450		650		1650	2000
Mini. Pulley Ø, in.	6	8		10		12		16	20
Thickness top, in.	5/32	3/16	15/64	15/64	9/32	9/32	11/32	9/32	11/32
Thickness bottom, in.	5/32	11/64		7/32				15/64	

Versions Available

- A** – abrasion resistant (regular)
- C** – heat resistant 338°F (392°F)
- P** – very low temperature down to -58°F
- G** – oil resistant (248°F heat resistant)
- F** – fire resistant and antistatic (DIN20340 & 20284, MSHA)
- W** – white FDA/USDA cover with stainless steel inserts and screws
Maximum length: 48"

ADVANTAGES

Installation

- No need for physical strength
- Quick installation (saves downtime) in all weather conditions
- Using battery or pneumatic operated screw driver
- No use/need for expensive equipment
- No need of highly skilled operator
- No drilling preparation, no template
- Self-tapping screws through the belt
- Wear and cut resistant
- High tensile strength

- Flexible
- Can be used for a bridge even with different belt carcass
- Suitable for high heat belt up to 400°F
- Compatible with small pulley diameters
- Compatible with conveyor scrapers
- Perfect for tubular belt
- Leak proof
- Available on coil or ready-to-use cut lengths
- Many rubber qualities available



SUPER-SCREW® 100/105

SUPER-SCREW® 180 to 200

RECORD V6

Record V6 fastener has pre-assembled staples.

Its allows to join belts 6 to 12 mm (1/4" to 1/2") belt thickness

Belt thickness	6 - 12 mm	1/4" to 1/2"
For belt with mechanical fastener rating up to	105 N/mm	600 PIW
Mini. Pulley Ø	230 mm	9"

ADVANTAGES

- Minimum tools required : hammer only
- Large range of applications
- 1 fastener to join 6 to 12 mm (1/4" to 1/2") belt thickness
- Continuous length
- Pre-assembled staples
- Good compression
- Very strong

INSTALLATION TOOL

- Open ended hammer tool



Record V6



Need more information?
Please visit our website

www.mlt-lacing.com

G 2002 / 3003 NEW

G 2000 family are fasteners with pre-attached staples for high strength conveyor belts.

	G 2002	G 3003 NEW
Belt thickness, mm	7.5 - 15	10 - 20
Belt thickness, in.	9/32 - 5/8	13/32 - 3/4
For belt with mechanical fastener rating up to	140 N/mm 800 PIW	350 N/mm 2000 PIW
Mini. Pulley Ø, in.	10	20

ADVANTAGES

- Easy installation
- Very simple tool design
- Very strong fastener
- Pre-assembled staples
- Continuous length fastener
- Reinforced loop
- Staples are protected by skiving the clips
- Perfect for trough belts
- Perforated to easily cut for different length
- Chamfered edge on fastener, friendly for belt cleaner

INSTALLATION TOOLS



G 3003



Hammer tool



G 3 Matic



Standard pneumatic tool

TITAN SERIES

ORIGINAL PATENT HOLDER
ORIGINAL MANUFACTURER

Titan fasteners have pre-assembled staples for high tension conveyor belts.

	T 10 H	T 1 R	T 10	T 14	T 2
Belt thickness, mm	5 - 7.5	6 - 14	6 - 8	9.5 - 18	14 - 18
Belt thickness, in.	3/16 - 5/16	1/4 - 9/16	1/4 - 5/16	3/8 - 11/16	9/16 - 3/4
For belt with mechanical fastener rating up to	125 N/mm 720 PIW		140 N/mm 800 PIW	160 N/mm 920 PIW	350 N/mm 2000 PIW
Mini. Pulley Ø, in.	10	10	20	20	30

ADVANTAGES

- Perfect for trough belts
- Durable and long lasting

INSTALLATION TOOL

- Hammer tool
- Manual operated hydraulic installation press

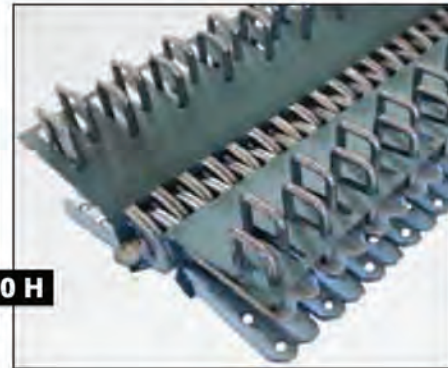


*Need more information?
Please visit our website*

www.mlt-lacing.com



T 10 H



VULCANISING TOOLS

Cutting shears and pliers

Cutting tools and accessories

Winch systems

Surface preparation

Measuring tools



Belt skiver
220 V, 110 V



Belt end clamps made of reinforced aluminium profile
With 2 hooks - for various belt width



Rubber cut profiler 220 V 400 W
Various width and depth



Hand winch
With lever 800 or 1600 or 3200 daN
cable Ø 8.3 or 11.5 or 16 mm



Electrical Screw driver
110 V, 400W



Cutter 18 mm
With jamming screw

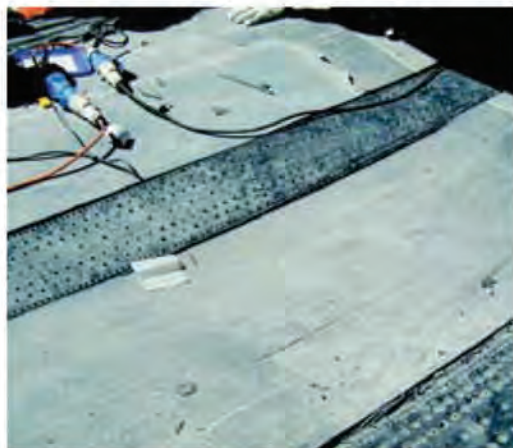


Double acting rollers
For belt up to 800 to 1000 mm wide

SUPER-SCREW®

The best way for patch repairs

 Need more information?
Please visit our website
www.mlt-lacing.com



AVAILABLE IN TWO VARIETIES



Required Length



In A Roll

INSTALLATION TOOL



Battery, pneumatic or
electric screwdriver



MS® Mechanical Fastener to screw!

MS® fasteners are the only mechanical fasteners that are installed using screws via a screwdriver (battery, electric or pneumatic)!

Installation is easy and simple, it doesn't require special equipment.

	MS® 45	MS® 55	MS® 65
Belt thickness, mm	6 - 11	9 - 15	10 - 18
Belt thickness, in.	15/64 - 7/16	9/32 - 19/32	13/32 - 23/32
For belt with mechanical fastener rating up to	65 N/mm 400 PIW	100 N/mm 600 PIW	125 N/mm 800 PIW
Mini. Pulley Ø, in.	5	10	20



ADVANTAGES

- Uses screws
- No costly toolings, only a powered screwdriver
- Quickly installed = shortened breakdown repair time
- No pre-drilling /no template
- Installed by screwing directly
- Belt is clamped by the fastener itself
- Rubber belts can be repaired and back to work immediately
- Good compression
- Can be installed closer to the carcass after rubber covers are skived
- Turn fastener upside down for a more leak proof and long life
- Ease of installation
- Perforated for ease of separation for troughing
- Friendly for the belt with less penetration points
- May install the pin prior to the fastener installation



336-434-0363

MLT MS Series Mechanical Fasteners



Screw length based on belt thickness

MS 25 Series: Rated for belts up to 260 PIW

<u>Belt thickness in inches</u>	<u>Belt thickness Metric</u>	<u>Screw Size</u>
9/64" to 3/16"	3.5 – 4.5 mm	4mm x 7mm lg.
3/16" to 7/32"	4.5 – 5.5 mm	4mm x 8mm lg.
7/32" to 17/64"	5.5 – 6.5 mm	4mm x 9mm lg.
17/64" to 19/64"	6.5 – 7.5 mm	4mm x 10mm lg.

MS 35/45 Series: Rated for belts up to 400 PIW

<u>Belt thickness in inches</u>	<u>Belt thickness Metric</u>	<u>Screw Size</u>
13/64" to 9/32"	5 – 6.9 mm	5mm x 10mm lg.
9/32" to 23/64"	7 – 8.9 mm	5mm x 12mm lg.
23/64" to 7/16"	9 – 11 mm	5mm x 14mm lg.

MS 55 Series: Rated for belts up to 650 PIW

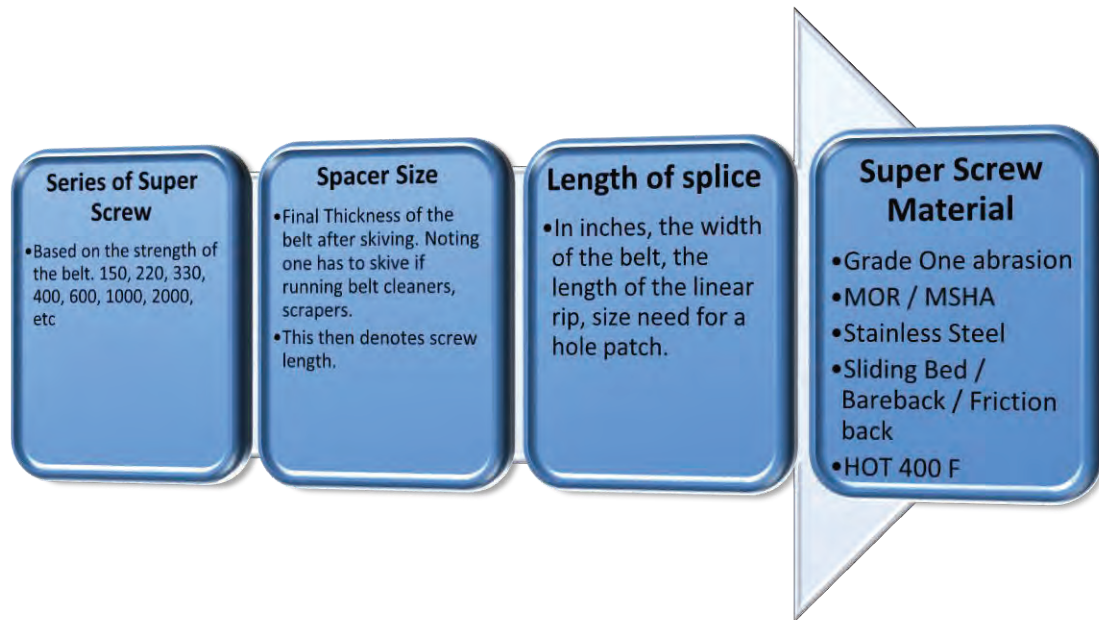
<u>Belt thickness in inches</u>	<u>Belt thickness Metric</u>	<u>Screw Size</u>
23/64" to 7/16"	9 – 10.9 mm	5mm x 14mm lg.
7/16" to 33/64"	11 – 12.9 mm	5mm x 16mm lg.
33/64" to 19/32"	13 – 14.9 mm	5mm x 18mm lg.

MS 65 Series: Rated for belts up to 800 PIW

<u>Belt thickness in inches</u>	<u>Belt thickness Metric</u>	<u>Screw Size</u>
13/32" to 31/64"	10 – 11.9 mm	5mm x 16mm lg.
31/64" to 9/16"	12 – 13.9 mm	5mm x 18mm lg.
9/16" to 41/64"	14 – 15.9 mm	5mm x 20mm lg.
41/64" to 23/32"	16 – 18 mm	5mm x 22mm lg.

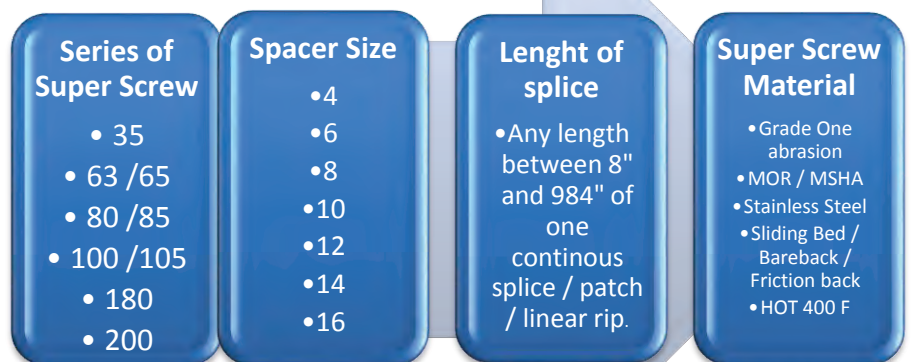


Decision Matrix for Super Screw



Decision matrix for ordering the correct Super Screw Fastener

1. PIW or Pounds per Inch Width of the belt. (Example: 220, 330, 400, 450, 800, 1600, etc)
2. Will the end user skive or not skive the belt? This usually depends on the end users using cleaners (scrapers / wipers). You must skive in the Super Screw when using Scrapers / Wipers and Cleaners.
3. The thickness of the belt that will be fastened. If you're skiving, then this new thickness after skiving is the "Belt Thickness" under splice. (This allows you to order the correct length of screw) **12mm-30mm**



4. Application or Product being carried or hauled by the belt helps you decide on the proper compound. (Abrasion Resistant, Slider Back/ Bareback, HOT 400°F, Food Grade, MSHA / MOR, or Stainless Steel)

Example: A 4 ply 400 PIW belt, 60" wide, 3/8 thick belt after skiving, hauling rock above ground =
 80 series super screw – 10 mm spacers – 60" wide - Grade one Abrasion resistant with 18 mm screws.
 (80-10-60 AR)

Minet Lacing Technology

336-434-0363

Super Screw - Screw Size Guide

**Belt thickness
under splice
(We recommend
to skive the belt)

FINAL THICKNESS



21 mm								180-20	
13/16"									
20 mm								6 x 31.5	
19 mm								180-18	200-18
3/4"									
18 mm								6 x 30	6 x 31.5
17 mm								180-16	200-16
43/64"								6 x 28.5	6 x 30
16 mm								180-15	200-15
15 mm							*105+one size		
5/8"				80-14	85-14	100-14		6 x 27	6 x 28.5
14 mm				5 x 22	5 x 24	5 x 24		180-14	200-14
				Screws	Screws	Screws		6 x 25.5	6 x 27
13 mm	35-12	63-12	65-12	80-12	85-12	100-12		180-12	200-12
1/2"									
12 mm	5 x 18	5 x 18	5 x 20	5 x 20	5 x 22	5 x 22		6 x 24	6 x 25.5
	Screws	Screws	Screws	Screws	Screws	Screws		180-10	200-10
11 mm									
	35-10	63-10	65-10	80-10	85-10	100-10		6 x 22.5	6 x 24
10 mm								180-8	200-8
3/8"	5 x 16	5 x 16	5 x 18	5 x 18	5 x 20	5 x 20			
9 mm	Screws	Screws	Screws	Screws	Screws	Screws		6 x 21	6 x 22.5
8 mm	35-8	63-8	65-8	80-8	85-8	100-8			
5/16"	5 x 14	5 x 14	5 x 16	5 x 16	5 x 18	5 x 18			
7 mm	Screws	Screws	Screws	Screws	Screws	Screws			
6 mm	35-6	63-6	65-6	80-6	85-6	100-6			
1/4"	5 x 12	5 x 12	5 x 14	5 x 14	5 x 16	5 x 16			
	Screws	Screws	Screws	Screws	Screws	Screws			



***Part numbers for Super Screw are always: Series of Super Screw - Thickness After Skiving - Length - Rubber Compound

Super Screw / Screw Count Guide



Minet Lacing Technology (MLT)
 2011 Nuggett Rd.
 High Point NC 27263

Series: 35 63/65 80/85/100/105 180/200

Inch:

12	36	64	92	80
18	53	95	138	119
20	59	107	152	133
24	71	124	185	156
30	89	156	229	201
36	106	187	278	237
42	124	222	319	276
48	142	254	371	312
54	159	274	412	349
60	177	316	457	401
72	212	383	556	474
80	236	423	614	530
120	354	634	920	794

MLT Compatibility Index

Minet fasteners	Availability of metals	Flexco comprable
MR 1	Gal/Stainless Steel	62 ready set
MR 2	Gal/Stainless Steel	125 ready set
MR 3	Gal/Stainless Steel	187 ready set
Clip'n Lock	Stainless Steel	UBX 1 Unibar
SL 00	Stainless steel	No Equilivent
SL 01	Gal/Stainless steel	No Equilivent
SL 02	Gal/Stainless steel	62 ready set
SL 03	Gal/Stainless steel	125 ready set
MS 25 350 PIW	Gal/Stainless steel	Baler belt fasteners
MS 35 400 PIW	Gal/Stainless steel	R2
MS 45 400 PIW	Gal/Stainless steel	R5
MS 55 650 PIW	Galvanized	R5.5
MS 65 800 PIW	Galvanized	R6
RV 6 600 PIW	Galvanized	R5/R5.5
Titan T 10 H	Gal/Stainless steel	R6
G 2000	Gal/Stainless steel	R6
Super Screw 35	Gal	200 PIW
Super Screw 63	Gal/Stainless	360 PIW
Super Screw 80	Gal/Stainless	450 PIW
Super Screw 100	Gal/Stainless	650 PIW
Super Screw 180	Gal/Stainless	1650 PIW
Super Screw 200	Gal/Stainless	2000 PIW
		No Equilivent
		No Equilivent
		No Equilivent
		No Equilivent
		No Equilivent
		No Equilivent



Minet Lacing Technology

DECIMAL and METRIC EQUIVILANTS of COMMON FRACTIONS						
FRACTION	DECIMAL	MILLIMETER		FRACTION	DECIMAL	MILLIMETER
1/64	0.015625	0.3969		33/64	0.515625	13.0969
1/32	0.03125	0.7938		17/32	0.53125	13.4938
3/64	0.046875	1.1906		35/64	0.546875	13.8906
1/16	0.0625	1.5875		9/16	0.5625	14.2875
5/64	0.078125	1.9844		37/64	0.578125	14.6844
3/32	0.09375	2.3813		19/32	0.59375	15.0813
7/64	0.109375	2.7781		39/64	0.609375	15.4781
1/8	0.125	3.175		5/8	0.625	15.875
9/64	0.140625	3.5719		41/64	0.640625	16.2719
5/32	0.15625	3.9688		21/32	0.65625	16.6688
11/64	0.171875	4.3656		43/64	0.671875	17.0656
3/16	0.1875	4.7625		11/16	0.6875	17.4625
13/64	0.203125	5.1594		45/64	0.703125	17.8594
7/32	0.21875	5.5563		23/32	0.71875	18.2563
15/64	0.234375	5.9531		47/64	0.734375	18.6531
1/4	0.25	6.35		3/4	0.75	19.05
17/64	0.265625	6.7469		49/64	0.765625	19.4469
9/32	0.28125	7.1438		25/32	0.78125	19.8438
19/64	0.296875	7.5406		51/64	0.796875	20.2406
5/16	0.3125	7.9375		13/16	0.8125	20.6375
21/64	0.328125	8.3344		53/64	0.821825	21.0344
11/32	0.34375	8.7313		27/32	0.84375	21.4313
23/64	0.359375	9.1281		55/64	0.859375	21.8281
3/8	0.375	9.525		7/8	0.875	22.225
25/64	0.390625	9.9219		57/64	89.0625	22.6219
13/32	0.40625	10.3188		29/32	0.90625	23.0188
27/64	0.421875	10.7156		59//64	0.921875	23.4156
7/16	0.4375	11.1125		15/16	0.9375	23.8125
29/64	0.453125	11.5094		61/64	0.953125	24.2094
15/32	0.46875	11.9063		31/32	0.96875	24.6063
31/64	0.484375	12.3031		63/64	0.984375	25.0031
1/2	0.5	12.7		1	1	25.4001

Welcome to the Minet Lacing Technology newsletter from the team at Minet Lacing Technology (MLT-North America). Our September Newsletter Features assistance in ordering our Super Screw by the roll.

- Minet Lacing Technology is closed December 24, 25, 26 and December 31 / January 1
- As ordering the Super Screw product line in bulk has become more popular, below are the facts regarding what you receive when ordering the Super Screw by the Roll or Coil.



What do I get when I order a Roll:

- 1 Roll of "top" Super Screw (984 inches of 35,63,65,80,85,100,105) or (600 inches of 180 or 200) series Super Screw
- 1 Roll of "bottom" Super Screw (984 inches of 35, 63, 65, 80, 85,100,105) or (600 inches of 180 or 200) series Super Screw.
- Spacers in the sizes of your choice (4mm,6mm,8mm,10mm,12mm, 14mm etc)
- 5,500 screws divided up into any size per your request (2000 12mm, 2000 14mm and 1000 16mm) as a very common example.
- A cutting template per your request.
- Instructional video on the proper cutting technique.
- 20 PZ2 bits or PZ3 depending on the Series ordered.

Decision matrix for ordering the correct Super Screw Fastener

1. PIW or Pounds per Inch Width of the belt. (Example: 220, 330, 400, 450, 800, 1600, etc)
2. Will the end user skive or not skive the belt? This usually depends on the end users using cleaners (scrapers / wipers). You must skive in the Super Screw when using Scrapers / Wipers and Cleaners.
3. The thickness of the belt that will be fastened. If you're skiving, then this new thickness after skiving is the "Belt Thickness" under splice. (This allows you to order the correct length of screw) **12mm-30mm**
4. Application or Product being carried or hauled by the belt helps you decide on the proper compound. (Abrasion Resistant, Slider Back/ Bareback, HOT 400°F, Food Grade, MSHA / MOR, or Stainless Steel)
 Example: A 4 ply 400 PIW belt, 60" wide, 3/8 thick belt after skiving, hauling rock above ground =
 80 series super screw – 10 mm spacers – 60" wide - Grade one Abrasion resistant with 18 mm screws.
 (80-10-60 AR)

How to Install Super-Screw 35 to 100

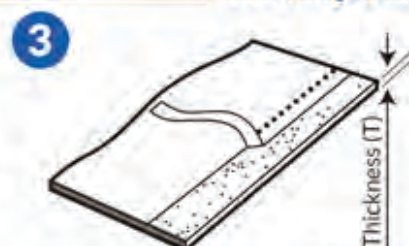
Note: For clarity, areas already screwed are shown in grey.



Install the SuperScrew (SS) on a bias.



Square the belt your normal way. Then drop down on either side 1" per 12" of the belt width. On the other side of the belt do the reverse so the ends will mate or match.



Skive the top of the belt to the appropriate depth. (Required when running wipers, cleaners or scrapers.)



4A
Slightly chamfer or sharpen the top and bottom of both ends of your belt to aid in sliding the ends of the belt into the SS.

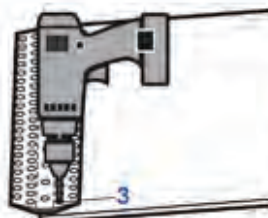
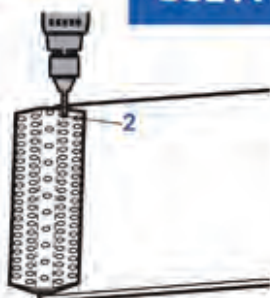
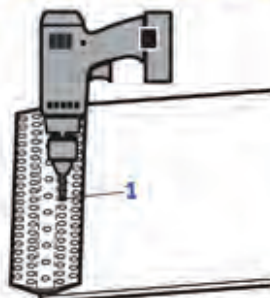
4B
Position the SS so that the belt is firm against the spacers already inserted in the SS.

Choose screw length based on belt thickness (T)

Thickness (T)	SS 35-63	SS 65-80	SS 85-100
3-4 mm	5 x 10	5 x 12	
5-6, 9 mm	5 x 12	5 x 14	5 x 16
7-8, 9 mm	5 x 14	5 x 16	5 x 18
9-10, 9 mm	5 x 16	5 x 18	5 x 20
11-12, 9 mm	5 x 18	5 x 20	5 x 22
13-14, 9 mm	Trim down	Trim down	5 x 24

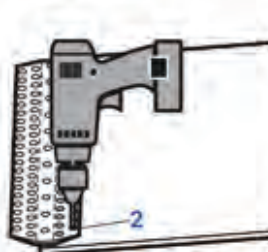
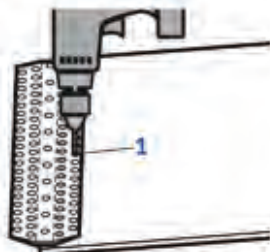
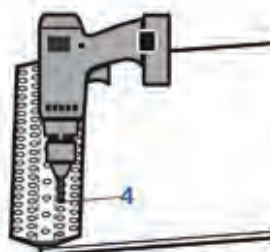
5 Screwing Sequence

USE A HEAVY DUTY 18VOLT OR GREATER DRILL



Install one screw in the center of the fastener (1), in the row closest to the spacers.

Then install a screw in both edges of the fastener (2), (3), then in the center between the center screw and the edge screw. Keep centering between the last screws installed (4), skipping from one side of the fastener to the other, and complete the row in this fashion.



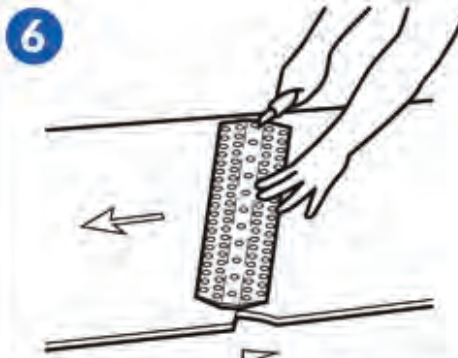
Tighten the screws until the fastener slightly puckers, this will indicate that the nut on the back side of the fastener has been seated in the carcass of the belt.

Completely install second row of screws, exactly like the first row, installing the center screw first, the edge screws second, and then the centers until row is complete.

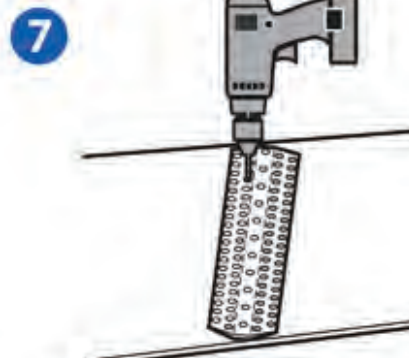
VERY IMPORTANT! Spacers must be removed!



REMOVE spacers across the center of the fastener, discard the spacers. Save the screws. (This will be the last Row of screws installed.)



Butt both ends of the belt together for a tight fit, then follow the screwing sequence (see above) for this side, installing the center row last.



Check the bottom of the fastener making sure the nuts are pulled in the carcass of the belt.

BELT SKIVER

PS 15 STANDARD®



THE PS 15 STANDARD® IS A HIGH QUALITY
SKIVING TOOL WITH AN OFF AND 4 HEAT SETTINGS.
GET YOURS TODAY! 1.336.434.0363














www.MLT-USA.com
"Any Splice, Any Belt, Any Time, Anywhere"

2011 Nuggett Rd. • High Point NC 27263 • Phone: 336.434.0363 • Fax: 336.434.2263

COMMON SPECIFICATIONS

- Handle is very ergonomic and comfortable.
- Every size blade can be fitted on the cutting head in one operation, clamps are spring loaded.
- Can skive on any part of your belt.
- Can skive your belts from 1/16" to 5/8" deep.
- Each part is available as a spare part.

BLADES

					
C1 3-5 mm	C2 6-10 mm	C3 8-12 mm	C4 10-14 mm	C5 12-17 mm	
					
R1 3-5 mm	R2 5-11 mm	R3 7-13 mm	R4 9-16 mm	R5 11-18 mm	

- All blades are available in packs of 20.
- Very high quality blades due to our exclusive double sharpening system on a specific steel.



Adjust the heat settings 0,1,2,3,4



Adjust the depth of your cut with 2 set screws

SUPER-SCREW®

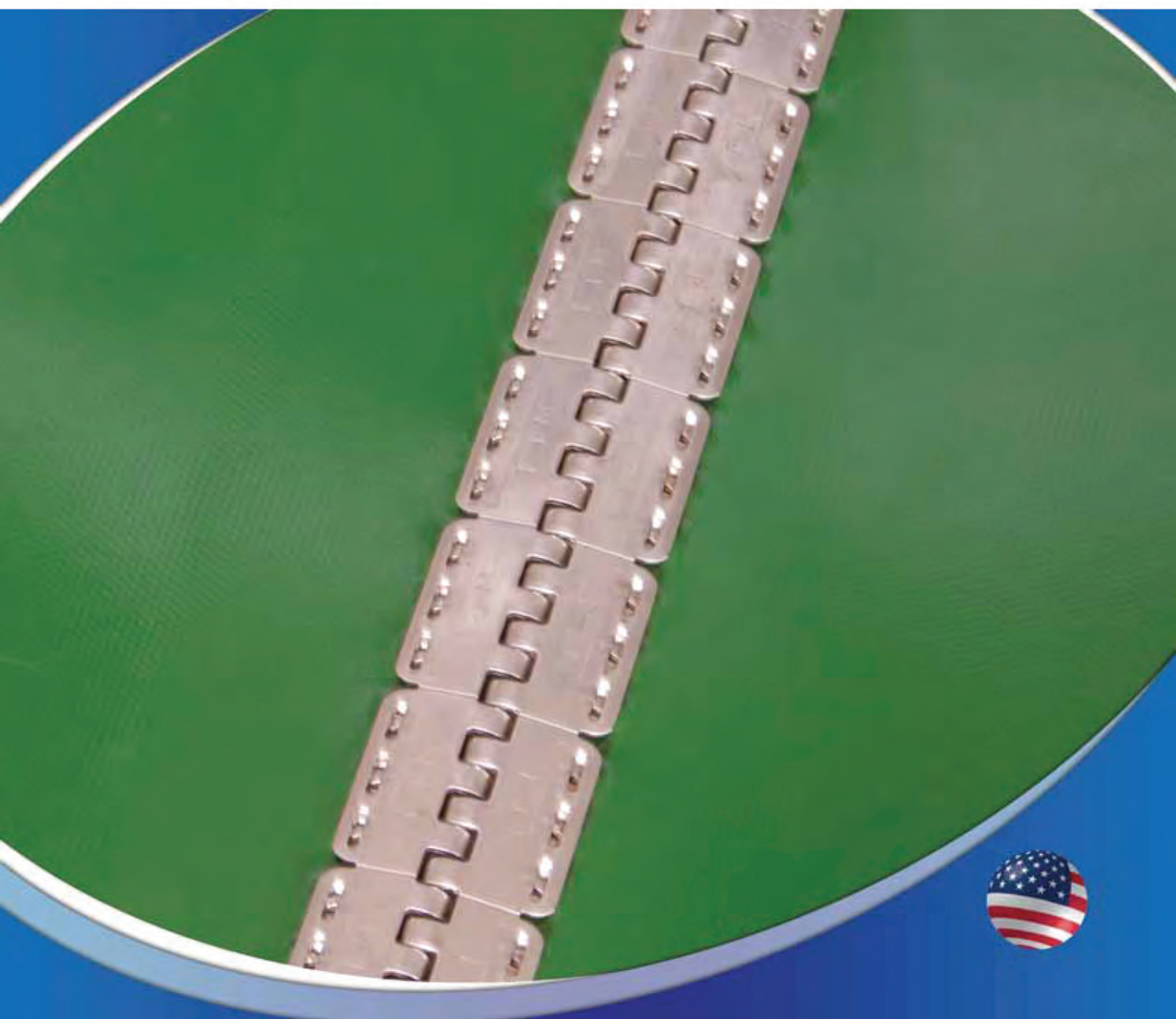
TECHNOLOGY

THE FLEXIBLE SPLICE TO SCREW





SELF-LOCK[®] Fasteners



What is it? SELF-LOCK® Fasteners



Self-Lock® 01

Self-Lock® fasteners are developed and patented by MLT.

The top face clamps itself into the belt by having the claws passing underneath the bridges and closing themselves.

Its efficiency and easiness makes **Self-Lock®** a major innovation in conveyor belt industry.



Need more information?
Please visit our website

www.mlt-lacing.com



Self-Lock® 03 - In harvest industry

Technical Data

	SL 00	SL 01	SL 02	SL 03
Belt thickness, mm	0.7 - 1.8	1.6 - 2.4	2.3 - 3.5	3.3 - 4.8
Belt thickness, in.	1/32 - 5/64	1/16 - 3/32	3/32 - 1/8	1/8 - 3/16
Max. belt strength, N/mm	12	16	28	38
Max. belt tension, PIW	68	91	160	217
Mini. Pulley Ø, mm	25	40	50	60
Mini. Pulley Ø, in.	1	1 1/2	2	2 3/8



Self-Lock® 03 - Top part



Self-Lock® 03 - Bottom part



Self-Lock® 02 - Low profile: flat to the belt

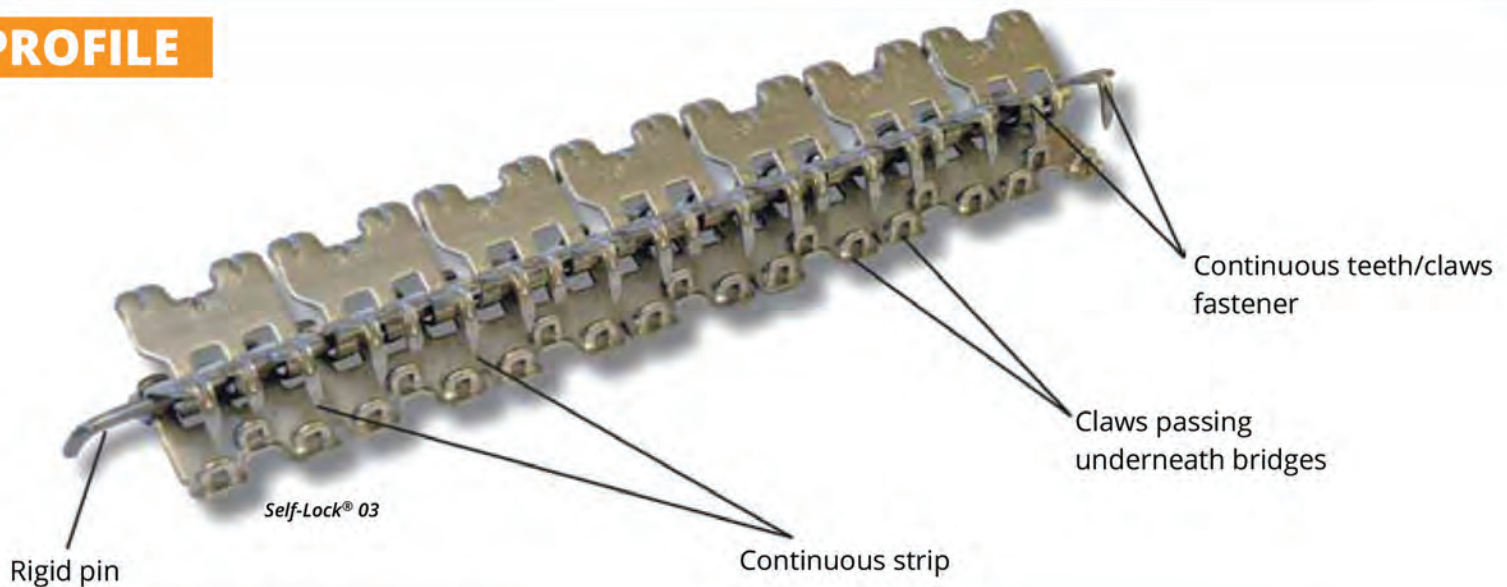


ADVANTAGES

- Quick installation
- One step fastener
- Low profile
- Grips the belt with good compression
- Continuous teeth/claws decreases contamination of carried product
- Adapted to bare back belt
- Non-magnetic fastener
- Rigid pin
- Continuous strip
- Tools easy to transport
- Tools are open-ended
- Teeth/claws are inside the belt, better for cleaning
- No protruding claws



PROFILE



INSTALLATION TOOL

- Tools easy to transport
- One tool fits all 4 sizes
- Tools are open-ended





Belt repair with
Super-Screw®
splice

Rivets Fasteners

MS® 55 Fasteners

Self-Lock® Fasteners

MR® Fasteners



Quality Products
Simplified Work

Super-Screw® Splice

ISC® Splice

Clip'N Lock® Fasteners

Super-Screw® Splice

Belt Skiver

MultiTool, Multi Fasteners Installation Tool



Quick
Supply



Efficient
R&D



Brochures
on Internet



Standard Products
Available in Inventory



Training
Assistance



Technical
Advice

MLT, a brand of Minet - It's also conveyor belt splicing systems, technical belts, tools...

MLT Inc.

2011 Nuggett Rd.
High Point, NC 27263
Office: 336-434-0363
Fax: 336-434-2263
MLT@northstate.net

www.mlt-lacing.com

Distributor





Minet Lacing Technology



Clip 'N Lock[®] Fasteners

Fasteners for Light Duty Conveyor Belts

New



Clip 'N Lock® Fasteners



Need more information?
Please visit our website

www.mlt-lacing.com

INNOVATION

Clip'N Lock® is a low profile, light duty fastener. It maintains the normal pitch that ensures an excellent gripping of the claws in wide belts, with 2 additional features due to its design:

- Double rows of teeth for additional strength
- Meander design: eliminates risk of losing claws

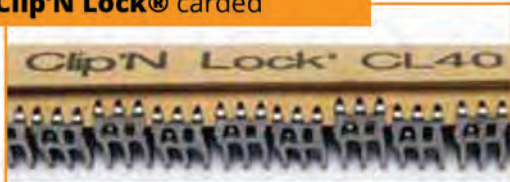
Double rows of teeth for additional strength



Meander design eliminates risk of losing claws



Clip'N Lock® carded



Top side of **Clip'N Lock®**



Bottom side of **Clip'N Lock®**

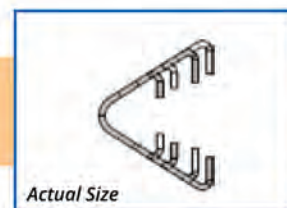
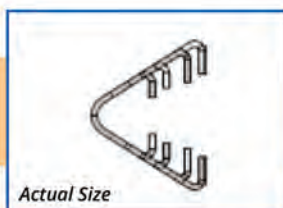
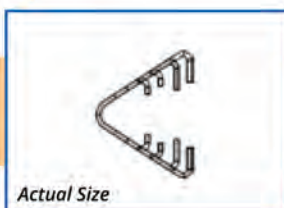
ADVANTAGES

- Meander design (continuously connected design), developed by Minet Lacing Technology's R&D:
 - Eliminates risk of losing claws
 - Helps to maintain pitch in wide belts
 - Perfect for trough belts
- 33 % more grip points gives 15% more additional strength than standard fasteners

- **Integrated into the belt without extra thickness**
- **Perfect for trough belts**
- **Continuous claws**



Technical Data



	CL 30	CL 40	CL 50
Lacing Pitch	2.54 mm	3.175 mm	3.67 mm
Belt Thickness (Regular point fastener)	1.5 to 2 mm .059" to .078"	2 to 3 mm .078" to .118"	3 to 5 mm .118" to .196"
Minimum Pulley Ø	50 mm 2"	60 mm 2.5"	75 mm 3"
Material	316 L antimagnetic stainless steel	316 L antimagnetic stainless steel	316 L antimagnetic stainless steel
Installation	MultiTool or vice tool		
Hinge	Nylon covered or bare stainless steel pin Ø 1.5 - 1.8 mm .059" - .070"	Nylon covered or bare stainless steel pin Ø 1.8 - 2.1 mm .070" - .083"	Nylon covered or bare stainless steel pin Ø 2 - 2.6 mm .078" - .097"
Packaging	In standard box each containing 10 strips of 300 mm (12") / 600 mm (24") / 1200 mm (48")		

INSTALLATION TOOLS

FEATURES

- To install: **Self-Lock®**, **Clip 'N Lock®**, Wire hook and flexible steel fasteners
- Module type tool
- 250 mm / 10" long jaws
- Different comb length by request
- Can work on horizontal or vertical support

Can perform with :

- Hydraulic electric pump
- Pneumatic hydro pump
- Hydraulic hand pump

Integrated Belt Clamps



ADVANTAGES

- **Versatile**
- **Quick**
- **Strong clamping**
- **Integrated belt clamps**
- **Professional industrial quality**

1. MultiTool

Multi fasteners installation tool



2. Vice Tool





Belt repair with
Super-Screw®
Splice

Rivets Fasteners

MS® 55 Fasteners

Self-Lock® Fasteners

MR® Fasteners



Quality Products
Simplified Work

Super-Screw® Splice

ISC® Splice

Clip'N Lock® Fasteners

Super-Screw® Splice

Belt Skiver

MultiTool, Multi Fasteners Installation Tool



Quick
Supply



Efficient
R&D



Brochures
on Internet



Standard Products
Available in Inventory



Training
Assistance



Technical
Advice

MLT is a supplier of conveyor belt splicing systems, technical belts, tools, vulcanizing presses...

MLT Inc.

2011 Nuggett Rd.
High Point, NC 27263
Office: 336-434-0363
Fax: 336-434-2263
MLT@northstate.net

www.mlt-lacing.com

Distributor

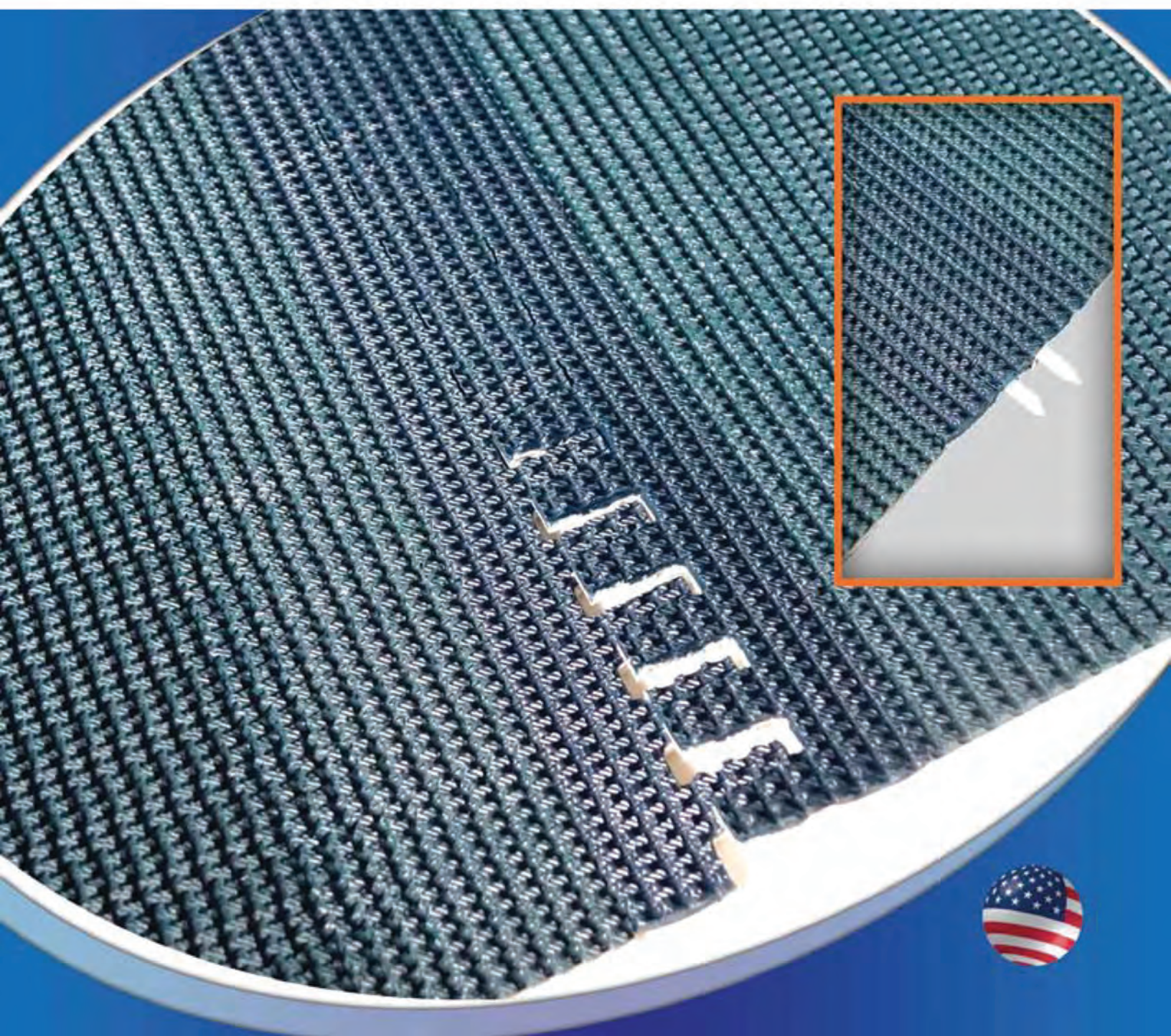




Minet Lacing Technology



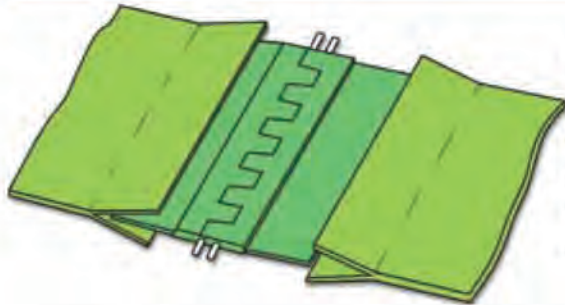
PVC/PU Lacings



What is it?

PVC/PU

Lacings



PVC and PU flexible lacing developed by MLT, is vulcanized inside the PVC or PU belt (using a vulcanizing PVC press). Available in different colors, these splices are perfect for joining either PVC or PU belts.



MATERIAL	MLT reinforced PVC or PU
INSTALLATION	The splice is vulcanized on or between the PVC or PU belt with a press: hot melted flexible lacing
FEATURES	2 flexible or rigid connecting pins



*Need more information?
Please visit our website*

www.mlt-lacing.com

TECHNICAL DATA

Top Side	PVC	PU	PVC Textile	PU Textile
Bottom Side	PVC or textile	PU or Textile	PVC Textile	PU Textile
Belt Thickness, mm	1.4 - 6.7	1.4 - 5.2	1.4 - 3.2	1.4 - 2.2
Max. Belt Tension, N/mm	8 - 20	8 - 20	8 - 12	8
Minimum Pulley Ø, N/mm	50 - 250	50 - 120	50 - 60	50

ADVANTAGES

- Flexible lacing
- No extra thickness
- Leak proof
- System easy to clean by removing the pin
- Like an endless belt
- Available in white FDA/USDA
- Can be used on rough top belts
- No metal pins, excellent for metal detector belt
- Different colors and types available



PVC SPLICE



COLORS

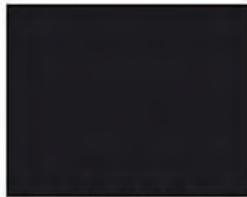
PU



White 030
RAL 9003



Deca Blue 115
RAL 5015



Black 315
RAL 9004



Pine green 240
RAL 6012



Green 245
RAL 6002

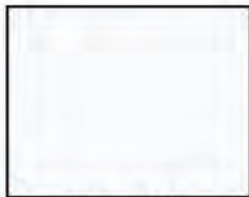


Blue Green 6005
RAL 5020

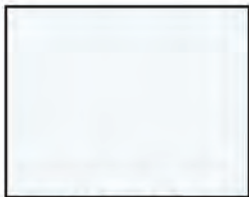


PVC splice in an airport belt

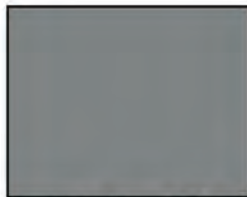
PVC



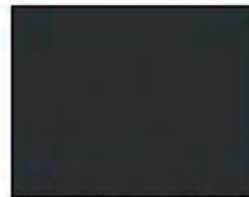
White 025
RAL 9003



White FDA
RAL 9016



Light Grey 360
RAL 7037

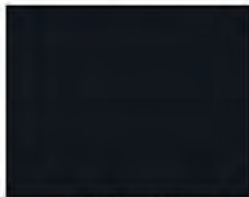


Dark Grey 340
RAL 7021

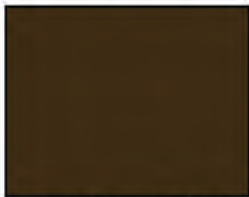


Blue FDA

Special
Food Industry



Black 310
RAL 9011



Black Feutre 320
RAL 7022



Apple Green 223
RAL 6001



Dark Green 235
RAL 6009



Petrol Blue 180
RAL 50203



Sky Blue 132
RAL 5007



Azur Blue 157
RAL 6012



Need more information?
Please visit our website

www.mlt-lacing.com



PVC splice in a detergent manufacturer belt



Belt repair with
Super-Screw®
Splice

Rivets Fasteners

MS® 55 Fasteners

Self-Lock® Fasteners

MR® Fasteners



Quality Products
Simplified Work

Super-Screw® Splice

ISC® Splice

Clip'N Lock® Fasteners

Super-Screw® Splice

Belt Skiver

MultiTool, Multi Fasteners Installation Tool



Quick
Supply



Efficient
R&D



Brochures
on Internet



Standard Products
Available in Inventory



Training
Assistance



Technical
Advice

MLT is a supplier of conveyor belt splicing systems, technical belts, tools, vulcanizing presses...

MLT Inc.

2011 Nuggett Rd.
High Point, NC 27263
Office: 336-434-0363
Fax: 336-434-2263
MLT@northstate.net

www.mlt-lacing.com

Distributor



T. CARSON AND COMPANY

“Wear Resistant Solutions”

Proprietary Polyurethane Formula Serving Industry For Over 20 Years.

Spray Nozzles Available In Sizes

1½”

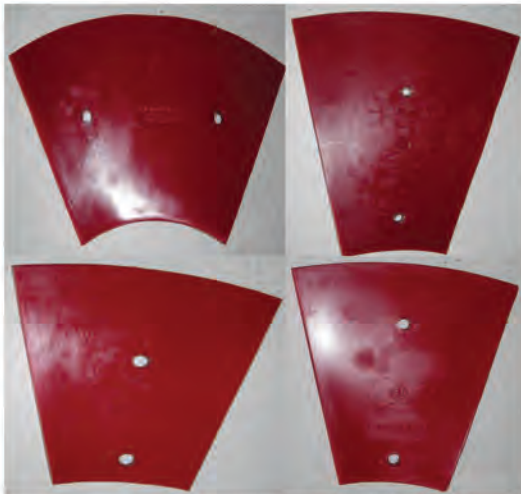
2½”

2

3”



Polyurethane Wearshoes



**Superior Abrasion,
Water and Oil Resistance**

**Contoured Molded
For Even Wear, Long Life
& Easier Installation**



****Wearshoes Available In Sizes 36” / 44” / 48” / 54” / 66” Left And Right**

Weldable Wear Liners!

*Ultra Durable Polyurethane Resists
The Toughest Abrasive Environments*

Solid Steel Binding System Molded
deep Within The Urethane



Flush For Welding

Recessed For Protection



Available In A Wide Variety Of Sizes!



12" x 12"



6" x 36"



12" x 24"

"New Polyurethane Skirt"



3/8" to 2" Thick

Up To 12" Wide

Up To 25 Feet Long!



T. CARSON & COMPANY

Phone: (800) 377-7135 Fax: (719) 488-0335
WWW.TCARSONCO.COM



CERAMICS



T. Carson and Company can provide alumina ceramic linings for coal and other natural material handling and processing industries. Ceramic liners provide long lasting solutions to the problems caused by abrasive wear and corrosion in a variety of hostile environments. Our variety of ceramics come in styles and shapes to fit almost any applications and most are available for immediate shipment.

Some of the sizes and types we offer include:

Weldable Wear Resistant High Alumina Ceramics

Standard Box Quantities

Nominal Size (W" x L" x T")	Pieces per Box	Weight per Box (lbs.)
WS 4 x 6 x 1/2"	35	54
WS 4 x 6 x 1"	17	54
WS 4 1/2 x 9 x 1/2"	14	40
WS 4 1/2 x 9 x 1"	7	79
WS 4 x 3 x 1/2"	70	51
WS 4 x 3 x 1"	34	51
WS 2 x 6 x 1/2"	70	51
WS 2 x 6 x 1"	34	50

Plain Wear Resistant High Alumina Ceramics

Standard Box Quantities

Nominal Size (W" x L" x T")	Pieces per Box	Weight per Box (lbs.)
PL 1 x 4 x 1/4"	288	36
PL 4 x 6 x 1/4"	66	54
PL 4 x 6 x 1/2"	36	54
PL 4 x 6 x 1"	18	54
PL 4 1/2 x 9 x 1/2"	16	42
PL 4 1/2 x 9 x 1"	8	54
PL 4 x 3 x 1/2"	72	51
PL 4 x 3 x 1"	36	51
PL 2 x 6 x 1/2"	72	54
PL 2 x 6 x 1"	36	54

Ceramic Hex Mesh

6" x 6" Mats with Mesh Backing

Nominal Size (W" x L" x T")	Sq. Ft. per Box	Pieces per Box	Weight per Box (lbs.)
6 x 6 x 1/8"	12	48	27
6 x 6 x 1/4"	9	36	37
6 x 6 x 3/8"	7	28	42
6 x 6 x 1/2"	5	20	46

** We also offer ceramic bonding agents and ceramic trowelables **

Please contact us for further assistance or questions



T. CARSON AND COMPANY
"CONVEYING A WORLD OF SOLUTIONS"



T. CARSON AND COMPANY
"CONVEYING A WORLD OF SOLUTIONS"

TEL: 1.800.377.7135

FAX: 1.719.488.0335

WWW.TCARSONCO.COM

P.O. BOX 995 MONUMENT, CO 80132

EPS 2880 SB

SMALL BEAD

WEAR RESISTANT CERAMIC/EPOXY COMPOSITE

Description

EPS 2880 SB contains small spheres of diamond hard ceramic beads that resist abrasion and small particles of silicone carbide to protect the 100% solid epoxy holding the beads. The ceramic takes the wear, the epoxy holds the beads in place. The non-sag paste conforms to any surface, and can even be applied even overhead. EPS 2880 SB adheres to most clean surface.

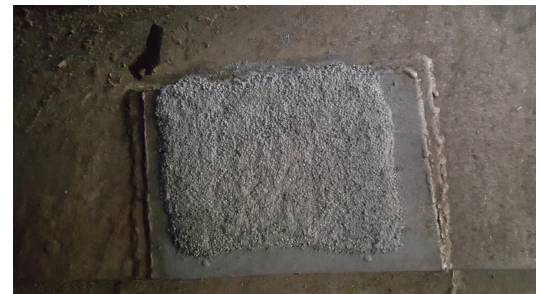
USES

For renewing and wear protection of surfaces on: pump housings, impellers, hoppers, pipe elbows, transitions, fan housings, vibrator screens, scrubbers, etc.

PHYSICAL PROPERTIES

Resin	EPX 650A
Hardener	AMN 2080B
Working Time	30 Minutes
Cure Time	6 to 8 hours
Compressive Strength	15,500 psi
Tensile Strength	5,000 psi
Hardness	90 D
Cured Density	19.3 lbs/gal

1 Week



1 Month





T. CARSON AND COMPANY
"CONVEYING A WORLD OF SOLUTIONS"

TEL: 1.800.377.7135

FAX: 1.719.488.0335

WWW.TCARSONCO.COM

P.O. BOX 995 MONUMENT, CO 80132

EPS 2880 SB

Exceptional wear resistance, reduced down time and cost savings thru speedy application on worn surfaces. EPS 2880 is easy to mix, apply and clean up. The epoxy held ceramic beads give outstanding wear resistance.

APPLICATION INSTRUCTIONS

Can be used in temperatures up to 300 Deg F. Provides 30 to 45 minutes working time and will harden in 6 to 8 hours. (One hour if heat is applied) A 20 lb. kit covers 7 sq. ft. 1/4 inch thick. A 5 lb. kit covers 1.75 sq. ft. 1/4 inch thick. Mix ratio is 4 parts resin EPX 650A to 1 part hardener AMN 2080B by volume.

STORAGE

Systems should be stored unopened in air tight containers at 60-90 degrees F.

HANDLING PRECAUTIONS

For complete and updated health and safety information, read the MATERIAL SAFETY DATA SHEETS. Do not handle or use until the MATERIAL SAFETY DATA SHEET has been read and understood.



T. CARSON AND COMPANY

"CONVEYING A WORLD OF SOLUTIONS"

"Triangle Wedge w/ handle" (TCM320040)



L
9 3/4"

W
8 1/2"

H
5 1/4"

** 4.5 LB Chock Available in orange or yellow



Perfect for 18 wheelers & maintenance vehicles

** NEW EXTENDED BASE CHOCK **



Now available from T. Carson and Company
2lb. , 4.5lb. and 6lb. wheel chock with
extended edge feet both sides for bracket storage

- 2lb. Mini with extended edge feet (TCM320041)
- 4.5lb. Standard with extended edge feet (TCM320042)
- 6lb. with extended edge feet (TCM320043)



T. CARSON AND COMPANY

"CONVEYING A WORLD OF SOLUTIONS"

"The 4.5 Pounder" (TCM320036)



L
11 1/2"

W
8"

H
8 1/4"

**Also available in a 6.0 lb "Standard"
(TCM320035)



Perfect for 18 wheelers & maintenance vehicles

"The 2 Pound Mini" (TCM320037)



L
8 1/2"

W
7.0"

H
6 1/4"



Ideal for trailers with smaller wheels and lighter loads

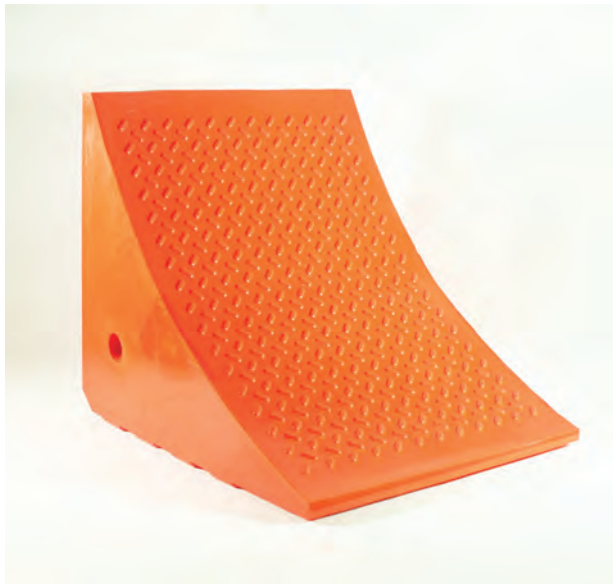


T. CARSON AND COMPANY

"CONVEYING A WORLD OF SOLUTIONS"

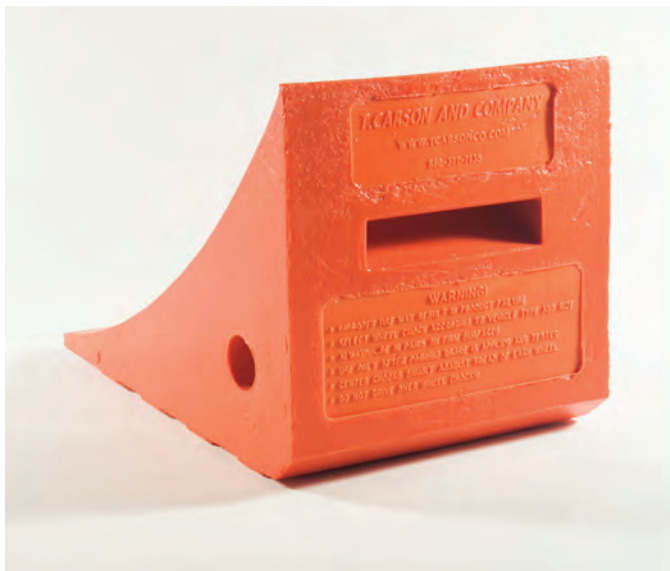
Ultra high strength, light weight polyurethane wheel chocks. Safety orange, complies with OSHA for many parked vehicles, long term durability, oil resistant!

"The 27 Pound Jumbo" (TCM320038)

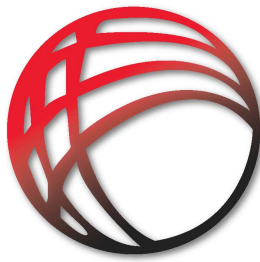


<u>L</u>	<u>W</u>	<u>H</u>
17 1/2"	14 3/4"	14 3/4"

Ideal for 105 inch wheels



Easy haul handle and convenient rope or chain hole



T. CARSON AND COMPANY

"CONVEYING A WORLD OF SOLUTIONS"

Ultra high strength, light weight polyurethane wheel chocks. Safety yellow, complies with OSHA for many parked vehicles, long term durability, oil resistant!

Large Heavy-Duty Equipment Wheel Chock (TCM376063)



<u>Length</u>	<u>Width</u>	<u>Height</u>
---------------	--------------	---------------

15"	15"	10 1/2"
-----	-----	---------

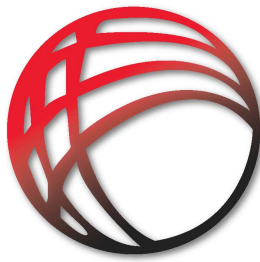
UP TO 70 TON PAYLOAD

Max Operating Weight: 245,000 lbs

Ideal for up to 65 inch wheels



Easy haul handle and
convenient rope or chain hole



T. CARSON AND COMPANY

"CONVEYING A WORLD OF SOLUTIONS"

Ultra high strength, light weight polyurethane wheel chocks. Safety yellow, complies with OSHA for many parked vehicles, long term durability, oil resistant!

Large Heavy-Duty Equipment Wheel Chock (TCM376053)

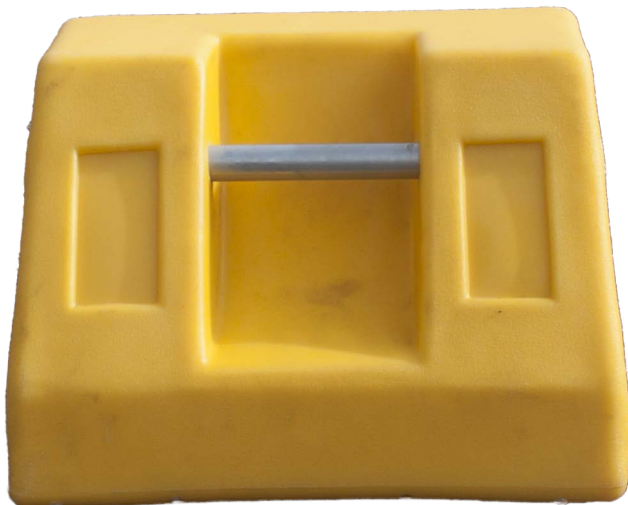
<u>Length</u>	<u>Width</u>	<u>Height</u>
22"	15"	10"

UP TO 255 TON PAYLOAD

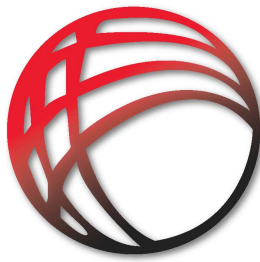
Max Operating Weight: 866,000 lbs



Ideal for up to 142 inch wheels



Easy haul handle and
convenient rope or chain hole



T. CARSON AND COMPANY

"CONVEYING A WORLD OF SOLUTIONS"

Ultra high strength, light weight polyurethane wheel chocks. Safety yellow, complies with OSHA for many parked vehicles, long term durability, oil resistant!

Large Heavy-Duty Equipment Wheel Chock (TCM376064)



Length Width Height

24 1/2" 14" 15 3/4"

UP TO 400 TON PAYLOAD

Max Operating Weight: 1,600,000 lbs

Ideal for up to 165 inch wheels



Easy haul handle and
convenient rope or chain hole



T. CARSON AND COMPANY
"CONVEYING A WORLD OF SOLUTIONS"

URETHANE WHEEL CHOCK RATING

TCM 320037 2 LB. MINI

Wheel size up to 35" dia. up
Weight Load to 20,000 lbs.

TCM 320041 2 LB. MINI W/ EXTENDED EDGE BASE

Wheel size up to 35" dia. up
Weight Load to 30,000 lbs.

TCM 320036 4.5 LB. STANDARD

Wheel size up to 35" dia. up
Weight Load to 40,000 lbs.

TCM 320042 4.5 LB. STANDARD W/ EXTENDED EDGE BASE

Wheel size up to 35" dia. up
Weight Load to 60,000 lbs.

TCM 320040 4.5 LB. TRIANGLE WEDGE WITH HANDLE

Wheel size up to 32" dia. up
Weight Load to 50,000 lbs.

TCM 320035 6 LB. STANDARD

Wheel size up to 35" dia. up
Weight Load to 60,000 lbs.

TCM 320043 6 LB. STANDARD W/ EXTENDED EDGE BASE

Wheel size up to 35" dia. up
Weight Load to 70,000 lbs.

TCM 320038 27 LB. JUMBO

Wheel size up to 105" dia. up
Weight Load to 140,000 lbs.

TCM 376063 LARGE HEAVY-DUTY

Wheel size up to 65" dia.
Weight Load up to 245,000 lbs.

TCM 376053 LARGE HEAVY-DUTY

Wheel size up to 142" dia.
Weight Load up to 855,000 lbs.

TCM 376064 LARGE HEAVY-DUTY

Wheel size up to 165" dia.
Weight Load up to 1,600,000 lbs.