

# CIRCUIT BREAKER

## XCB: Explosionproof Circuit Breaker Enclosures/Assemblies Explosionproof Disconnect Enclosures/Assemblies

### FEATURES

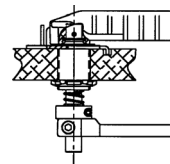
- Circuit breakers are thermal magnetic type and are rated from 15A to 800A
- Disconnects are fused or non-fused and are rated 30A, 60A, 100A, & 200A
- Through the door, spring loaded circuit breaker operating handle
- Pre-drilled for hinges (hinges optional)
- Pre-drilled for sub-panel (sub-panel optional)
- One-piece, NEMA 4 water-tight gasket
- Premium, high-strength stainless steel captive cover bolts
- Internal grounding provisions
- Cast-on mounting feet
- Padlockable handle
- Tumbled surface preparation for uniform, natural, aluminum finish
- Standard drilled & tapped conduit configurations
- XCBC and larger are furnished with hinges

### DESIGN OPTIONS

- Sub-Panels – Available in galvanized steel (XSM) or aluminum (XSA)
- Aluminum hinge kits (with stainless steel hardware)
- Non-removable hinges
- Customer specified drilling and tapping
- Installation of operators and auxiliary devices
- Custom machining – milling, counter-boring, spot-facing, blind-tapped holes, etc
- Installation and wiring of internal terminal blocks and control components
- UL Listed NNNY populated / wired control panels
- Cast-on company logos
- Multiple coating options for additional corrosion resistance
- Special mounting provisions
- Quad-lead cover bolts
- Breather/drain
- Auxiliary contacts
- External ground lug

### MATERIAL

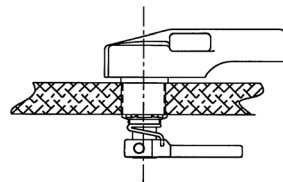
- Enclosures cast from proprietary 359 aluminum alloy
- Standard stainless steel cover bolts are 316L
- XSM panels are #12 gauge galvanized steel (.108" thick)
- XSA panels are #10 gauge aluminum (.100 thick)
- Hinge blocks are 359 aluminum, pins and hardware are 303 stainless steel



#### Standard XBO Style

"New", spring loaded, compact adjustable design, ease of assembly and less expensive. Standard 3/4 – 14 NPSM opening required for installation.

Optional XCBH 2-2 handle shown; standard handle is XBO.



#### Optional XCBH Style

"Classic", larger handle. Special 1" – 11 1/2" NPSM opening required for installation.

### Certifications

Class I, Divisions 1 and 2, Groups B\*, C, and D  
Class II, Divisions 1 and 2, Groups E, F, and G  
Class III  
NEMA Type 4X, 7, and 9

UL 1203/CSA C22.2 No. 30  
UL50  
UL1604



\*Group B available without N4 option, consult factory if gas Group B is required.

The ADALET Engineering Department is Available to Assist you in the Selection of Enclosures and Accessories.

# Explosionproof Circuit Breaker Enclosures

MOLDED CASE CIRCUIT BREAKER ENCLOSURES (BREAKER INCLUDED)				
Breaker Frame Size	Volts	Amp Rating	Catalog No. 2 Pole Non-Interchangeable	Catalog No. 3 Pole Non-Interchangeable
100/150	480 Volt AC 250 Volt DC	15	XCBA-N4-15E42*	XCBA-N4-15E43*
		20	XCBA-N4-20E42*	XCBA-N4-20E43*
		30	XCBA-N4-30E42*	XCBA-N4-30E43*
		40	XCBA-N4-40E42*	XCBA-N4-40E43*
		50	XCBA-N4-50E42*	XCBA-N4-50E43*
		60	XCBA-N4-60E42*	XCBA-N4-60E43*
		70	XCBA-N4-70E42*	XCBA-N4-70E43*
		80	XCBB-N4-80E42*	XCBB-N4-80E43*
		90	XCBB-N4-90E42*	XCBB-N4-90E43*
		100	XCBB-N4-100E42*	XCBB-N4-100E43*
		110	XCBB-N4-110E42*	XCBB-N4-110E43*
		125	XCBB-N4-125E42*	XCBB-N4-125E43*
		150	XCBB-N4-150E42*	XCBB-N4-150E43*
		100/150	600 Volt AC 250 Volt DC	15
20	XCBA-N4-20E62*			XCBA-N4-20E63*
30	XCBA-N4-30E62*			XCBA-N4-30E63*
40	XCBA-N4-40E62*			XCBA-N4-40E63*
50	XCBA-N4-50E62*			XCBA-N4-50E63*
60	XCBA-N4-60E62*			XCBA-N4-60E63*
70	XCBA-N4-70E62*			XCBA-N4-70E63*
80	XCBB-N4-80E62*			XCBB-N4-80E63*
90	XCBB-N4-90E62*			XCBB-N4-90E63*
100	XCBB-N4-100E62*			XCBB-N4-100E63*
110	XCBB-N4-110E62*			XCBB-N4-110E63*
125	XCBB-N4-125E62*			XCBB-N4-125E63*
150	XCBB-N4-150E62*			XCBB-N4-150E63*
225/250	600 Volt AC 250 Volt DC			70
		90	XCBC-N4-90JN2*	XCBC-N4-90JN3*
		100	XCBC-N4-100JN2*	XCBC-N4-100JN3*
		125	XCBC-N4-125JN2*	XCBC-N4-125JN3*
		150	XCBC-N4-150JN2*	XCBC-N4-150JN3*
		175	XCBC-N4-175JN2*	XCBC-N4-175JN3*
		200	XCBC-N4-200JN2*	XCBC-N4-200JN3*
		225	XCBC-N4-225JN2*	XCBC-N4-225JN3*
		250	XCBC-N4-250JN2*	XCBC-N4-250JN3*

ATEX or IECEx Certification Available-Consult factory

**\*CUSTOMER MUST SPECIFY CIRCUIT BREAKER BRAND SUFFIX:**

W-Cutler-Hammer (Westinghouse) G-General Electric S-Square-D T-I.T.E. (Siemens)

# CIRCUIT BREAKER

## Explosionproof Circuit Breaker Enclosures

### MOLDED CASE CIRCUIT BREAKER ENCLOSURES (BREAKER INCLUDED)

Breaker Frame Size	Volts	Amp Rating	Catalog No. 2 Pole Non-Interchangeable	Catalog No. 3 Pole Non-Interchangeable	
400	600 Volt AC	100	XCBD-N4-100KN2*	XCBD-N4-100KN3*	
		125	XCBD-N4-125KN2*	XCBD-N4-125KN3*	
		150	XCBD-N4-150KN2*	XCBD-N4-150KN3*	
		175	XCBD-N4-175KN2*	XCBD-N4-175KN3*	
		200	XCBD-N4-200KN2*	XCBD-N4-200KN3*	
		250 Volt DC	225	XCBD-N4-225KN2*	XCBD-N4-225KN3*
			250	XCBE-N4-250KN2*	XCBE-N4-250KN3*
			300	XCBE-N4-300KN2*	XCBE-N4-300KN3*
			350	XCBE-N4-350KN2*	XCBE-N4-350KN3*
		600	600 Volt AC	400	XCBE-N4-400KN2*
250	XCBE-N4-250LI2*			XCBE-N4-250LI3*	
300	XCBE-N4-300LI2*			XCBE-N4-300LI3*	
350	XCBE-N4-350LI2*			XCBE-N4-350LI3*	
250 Volt DC	400			XCBE-N4-400LI2*	XCBE-N4-400LI3*
	500			XCBF-N4-500LI2*	XCBF-N4-500LI3*
800	600 Volt AC	600	XCBF-N4-600LI2*	XCBF-N4-600LI3*	
		400	XCBF-N4-400MI2*	XCBF-N4-400MI3*	
		500	XCBF-N4-500MI2*	XCBF-N4-500MI3*	
	250 Volt AC	600	XCBF-N4-600MI2*	XCBF-N4-600MI3*	
		700	XCBF-N4-700MI2*	XCBF-N4-700MI3*	
800	XCBF-N4-800MI2*	XCBF-N4-800MI3*			

ATEX Certification Available-Consult factory

**NOTE** For Interchangeable Trip substitute an "I" for "N" in the Catalog Number. (Example: XCBC-N4-70JI2)**\*CUSTOMER MUST SPECIFY CIRCUIT BREAKER BRAND SUFFIX:**

W-Cutler-Hammer (Westinghouse) G-General Electric S-Square-D T-I.T.E. (Siemens)

## Explosionproof Disconnect Enclosures

### FUSIBLE DISCONNECT SWITCHES

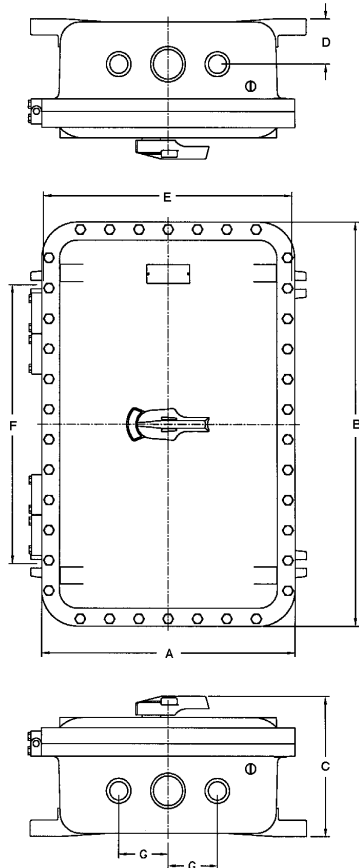
Horsepower Rating at 480 Volts	Horsepower Rating at 600 Volts	Amp Rating	Catalog No. 3 Pole
20	20	30	XCBA-N4-30DF3W
40	50	60	XCBA-N4-60DF3W
75	75	100	XCBB-N4-100DF3W
125	150	200	XCBK-N4-200DF3G

### NON-FUSED DISCONNECT SWITCHES

Horsepower Rating at 480 Volts	Horsepower Rating at 600 Volts	Amp Rating	Catalog No. 3 Pole
20	20	30	XCBA-N4-30DN3W
40	50	60	XCBA-N4-60DN3W
75	75	100	XCBB-N4-100DN3W
125	150	200	XCBK-N4-200DN3G

**NOTE** Mounting pans drilled for class "J" fuses, fuses not included.

# Explosionproof Circuit Breaker Enclosures

**CIRCUIT BREAKER ENCLOSURE ONLY**

Breaker Frame Size	Trip Range	Enclosure
100	15-70	XCBA-N4
100/150	80-150	XCBB-N4
225/250	70-250	XCBC-N4
400	100-225	XCBD-N4
600	250-400	XCBE-N4
800	400-800	XCBF-N4
1200	800-1200	XCBG-N4

**FUSIBLE DISCONNECT SWITCHES**

Description	Suffix	Available On Circuit Breaker	Available On Disconnect Switch	Universal Enclosure Only
Auxiliary Switch 1A and 1B Contacts	AS1	•	•	
Auxiliary Switch 2A and 2B Contacts	AS2	•	•	
Bell Alarm (Specify No. of Contacts)	BA	•		
Breather/Drain - installed in bottom	E	•	•	•
Breather and Drain installed	EE	•	•	•
High Interrupting Capacity Breaker	HI	•		
Epoxy Coating (External), (Specify Color)	LI	•	•	•
Epoxy Coating (Internal and External), (Specify Color)	L2	•	•	•
Substitute MCP for Breaker	M	•		
Phenolic Nameplate (Specify Legend)	NP	•	•	•
Shunt Trip (Specify Voltage Rating)	ST	•		
Undervoltage Release (Specify Voltage Rating)	UV	•		
Other / Special	Z	•	•	

**DATA DIMENSIONS**

Catalog #	Inside Nom. Dimensions			Overall Dimensions			Mounting Lug CL to CL		Mtg. Bolt Size	Conduit Dimension		Conduit # Holes Top/Bot		Ship Weight (lbs.)
	W	L	D	A	B	C	E	F		D	G	Size		
XCBA-N4	6	11	5	9 ¼	14 ¼	9	9 ⅝	7 ½	7/16	2 ½	—	1 ¼	1	28
XCBB-N4	6	13	5	9 ¼	16 ¼	9	9 ⅝	9 ½	3/8	2 ½	—	2	1	31
XCBC-N4	7	18	5	10 ¾	21 ¾	9	9 ¾	14 ½	3/8	2 ¾	—	2 ½	1	47
XCBD-N4	12	20	5	16 ¼	24 ¼	10	15 ¾	14 ¾	½	3 ¼	—	2 ½	1	108
XCBE-N4	12	24	6	16 ¼	28 ¼	11	15 ¾	18 ¾	½	3 ⅝	2 ⅞	3	2	131
XCBF-N4	12	36	8	16 ¼	40 ¼	13 ½	15 ¾	29	5/8	4 ½	3 ⅝	4	2	237

ATEX Certification Available-Consult factory

**NOTE** All enclosures have 1/2" NPT top and bottom for breather drain.