

**1. Program Plan and Projects** – as we discussed at the May Meeting, the Program Plan and Projects is being finalized to make it a more attractive document to take or send to funding agencies. The final touches are almost done which includes two very interesting maps.

a. Historic Esmont Village map done electronically instead of the hand-drawn one we have been using. And, five of the seven Projects are shown.

b. Map of Esmont/Alberene/Scottsville. This map shows the contiguous areas of Esmont, Alberene and Scottsville. All properties with these three mailing addresses were to make this map. Esmont is almost as large as Scottsville and the three areas make up *Albemarle County's forgotten southern corner*.

**2. Working to get two projects going, possibly a third.**

The time is right for Friends of Esmont to start working on Projects. Each Project requires a Chair and Committee members. **We need volunteers!** If you have interest in one of the following Projects, please contact us to sign up.

a. **Rails to Trails** – already has a committee and well written grant application. Needs \$8K planning grant. Our grant request was in competition with 174 other applications where only 10 grants were given. There is a tremendous amount of interest in our trail as the City and County want the entire area to be connected by trails. Our trail would become part of that network and connecting with Scottsville expands the connected area tremendously.

Meetings have been held with County Trails Director in search of funding.

b. **Rebuild the Depot** – The rebuilt Depot will be the Trailhead for the Esmont-Alberene Quarry Line Trail. The Depot needs a committee as many decisions will have to be made so we **need volunteers**. We have purchased a set of drawings from the C&O Historical Society of the depots being built at the time the Esmont Depot was built. However, the Esmont Depot was built by the Lanes and it is believed they drew their own plans, which do not exist today. However, with the

drawing and pictures available, the Esmont Depot can be duplicated to the extent necessary. For example, it may not be as large as the original. (See attached)

Rob Peters, formerly from Nelson County and whose father worked on the railroad, is a great resource for us and is very excited about this Project.

We also have a possible source for some of the original lumber taken from the Depot when it was demolished in 1964.

c. **Chronicling Esmont History** – This project will require only a couple of people and can be on-going as it does not interfere with other projects. **Need volunteers** to do research and possible writeup. There are three excellent sources of information for the history which should cover how/when/why/and by whom, Esmont was established, how the railroads impacted the Village, details of the slate/soapstone mining and its impact, and how logging fit in.

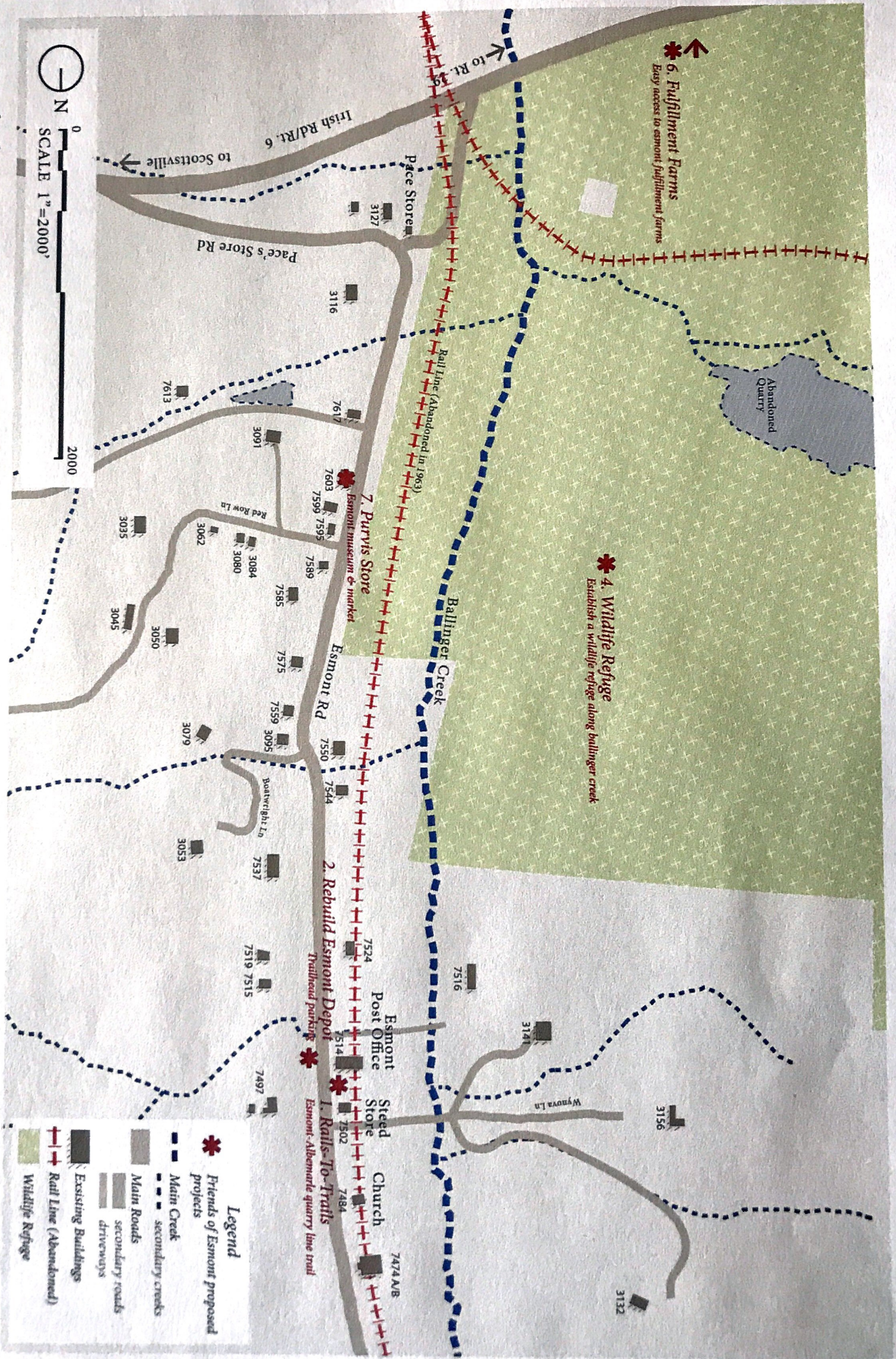
Garth Groff's booklet on the Shortlines offers a complete history of the trains/railroads in Esmont/Alberene/Schuyler. The document filed for Southern Albemarle's Historic Designation is another source of detailed information about the houses in the area and Jan Karon's papers at Small Collections Library at Alderman are another source. Ms. Karon owned and renovated Esmont House on Esmont Farm and hired a researcher to do a detailed history of the Farm which would include the Village. We are seeking funding for this Project.

We have a meeting with a representative of Charlottesville Area Community Funds to discuss all Projects.

***If you want to volunteer for any of these Projects or if you have information for funding any of them, please contact us.***

[PeggyPurvisDenby@FriendsofEsmont.com](mailto:PeggyPurvisDenby@FriendsofEsmont.com) 404 680 6122

3. **Met with Delores Dwyer and Jim Joyner** from Alberene to confirm they are working with us and agreed to be on the map.
4. We have been told the **Purvis Store** Project is not a dead issue, hope to have more information to share on this soon.
5. Esmont has a WWII Hero. His name is **Frank Peregory**. See attached picture of his marker located at the corner of Ivy Road and Emmet Street. More information on him to follow soon.



**Legend**

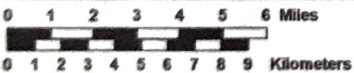
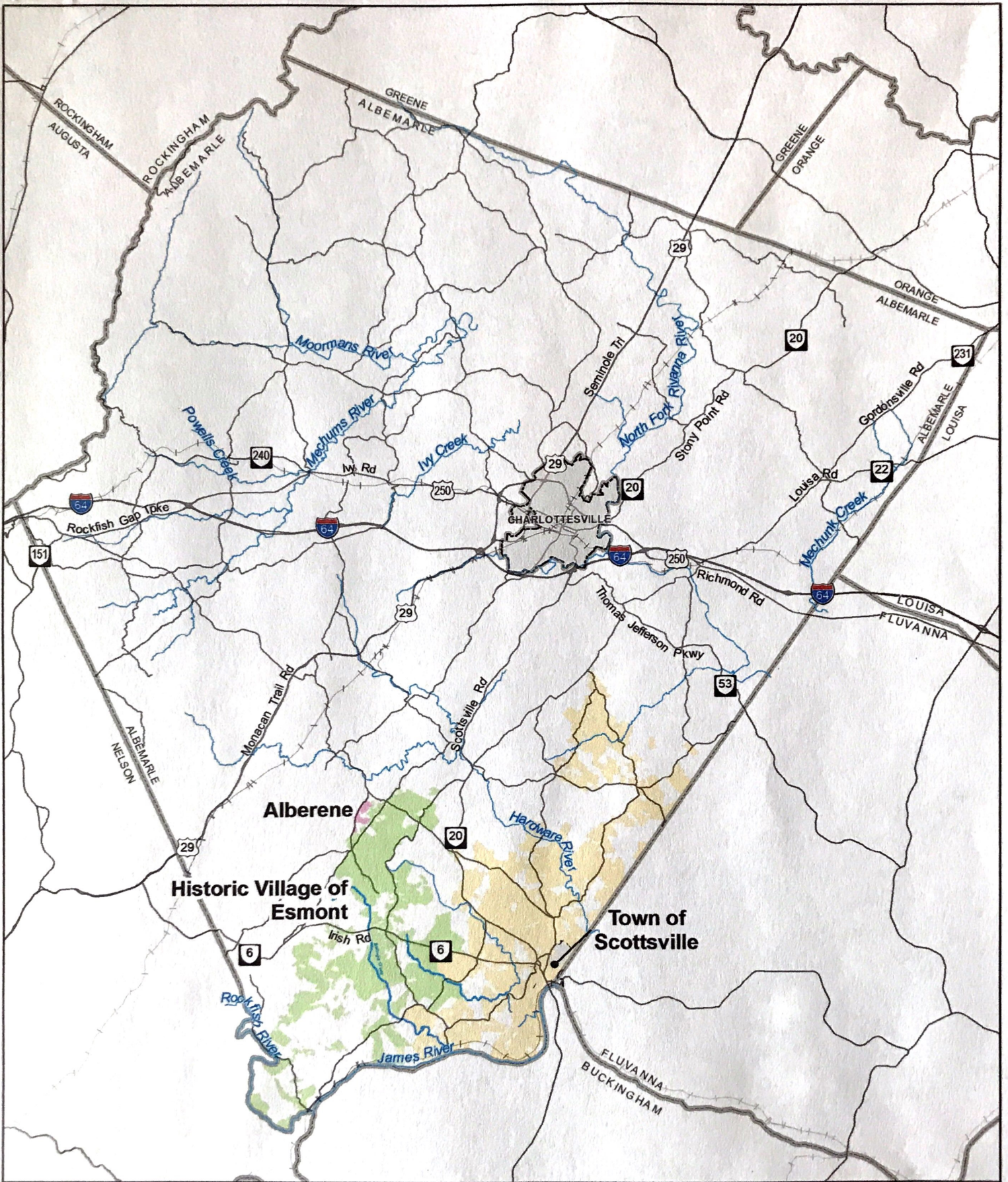
- Friends of Esmont proposed projects
- Main Creek
- secondary creeks
- Main Roads
- secondary roads
- Existing Buildings
- Rail Line (Abandoned)
- Wildlife Refuge

0 2000'  
SCALE 1"=2000'



grounded

# HISTORIC VILLAGE OF ESMONT, VA



Prepared by: Brian Becker  
 Department of Community Development, Albemarle County  
 Note: The map elements depicted are graphic representations  
 are not to be construed or used as a legal description.  
 This map is for display purposes only.

Map last edited: 6/17/2019

County of  
**Albemarle**



Virginia

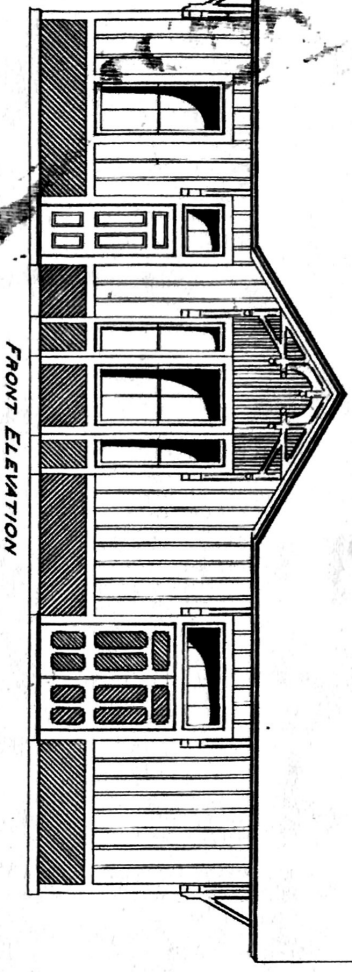
- Major Roads
- Railroads
- Major Water Bodies
- Major Streams
- Esmont Properties
- Scottsville Properties
- Alberene Properties

C. & O. RY.

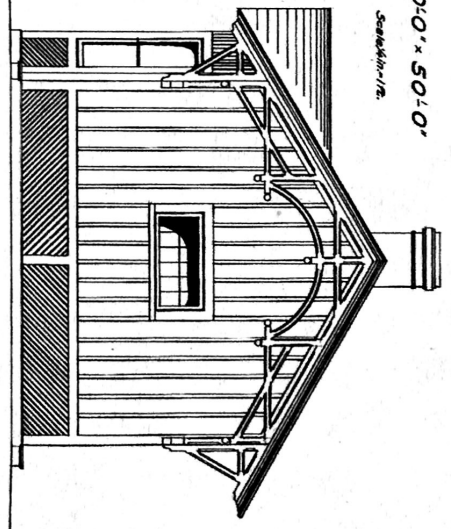
STANDARD STATION NO. 1.

20'-0" x 50'-0"

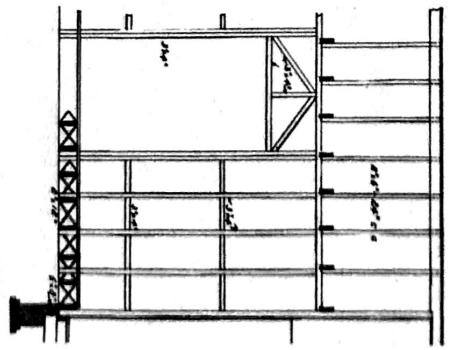
Scale 1/8"



FRONT ELEVATION

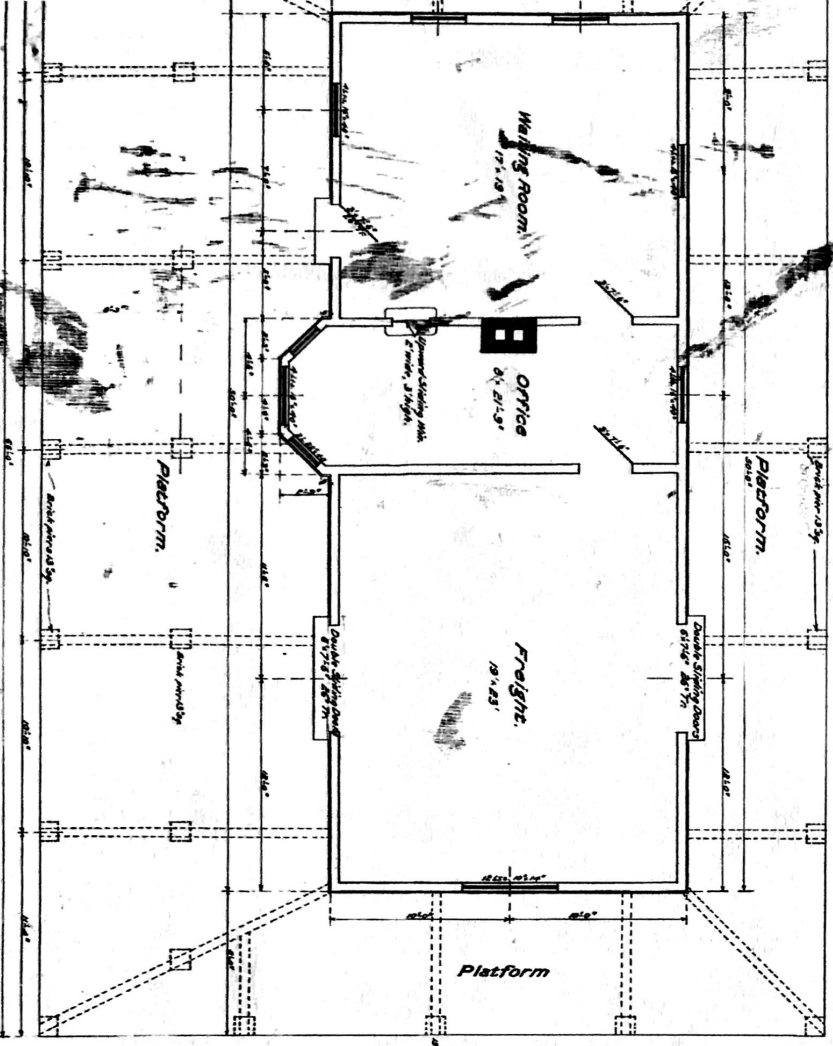


END ELEVATION

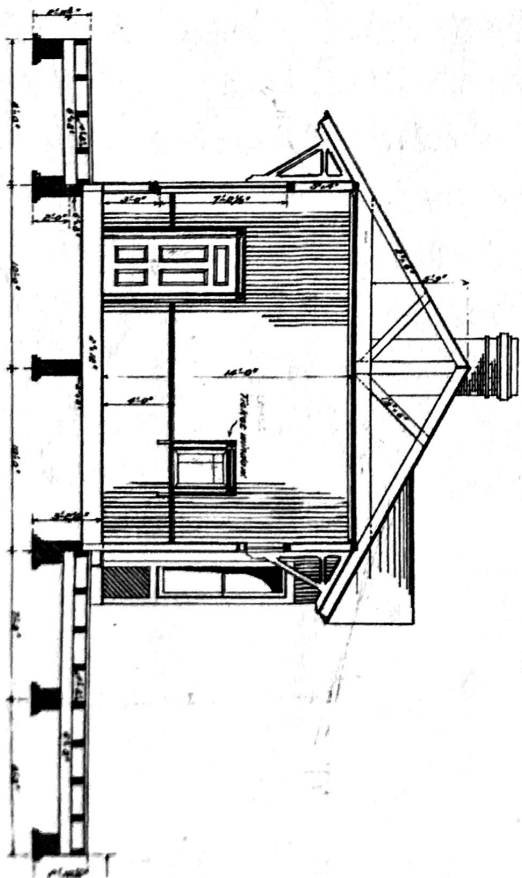


LONGITUDINAL SECTION.  
Showing framing.

5-10-17  
SUPERCEDED MAY 27, 1908.  
SEE REVISED PLAN OF MAY 27, 1908.



PLAN



CROSS SECTION.  
(Through Waiting Room.)

**G****27****TECHNICAL SERGEANT  
FRANK D. PEREGORY**

Born at Esmont on 10 April 1915, Frank D. Peregory enlisted in May 1931 in Charlottesville's Co. K (Monticello Guard), 116th Inf. Regt., 29th Inf. Div. On D-Day, 6 June 1944, T. Sgt. Peregory landed in the assault on Omaha Beach, Normandy, France. At Grandcamp, on 8 June, he single-handedly charged an enemy stronghold with grenades and bayonet, killing 8 soldiers and capturing 35. Six days later he was killed in action near Couvains. For his valor T. Sgt. Peregory was awarded the Medal of Honor. He was the sole Virginian in the 29th Division to be awarded the medal, which was given to only 14 of the 300,000 Virginians who served in the war. Peregory is buried at the American Cemetery in St. Laurent, Normandy, France.