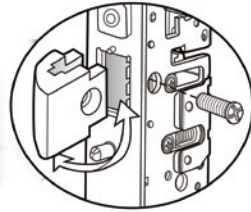




### 4900 SERIES HEAVY DUTY DEADLATCH

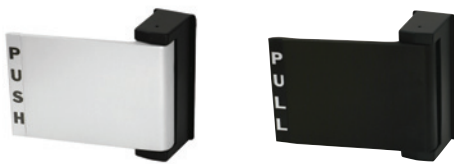


**FIELD REVERSIBLE  
LATCH BOLT**

- Flexibility of traffic control and installation is offered by the 4900 series deadlatches
- A reverse turn of the key while bolt is held retracted retains the bolt, to allow two-way traffic for applications which require free entrance at certain times and exit-only at other times
- Interchangeable, without stile modification, with any MS1850A or MS1850S deadbolt of same backset and faceplate shape
- Retrofits to existing 4500/4700 deadlatch preparations; 1-3/4" minimum door thickness required
- Cylinder backset: 31/32", 1-1/8" or 1-1/2" only
- Latch bolt: 5/8" x 1" x 5/8" throw, solid brass; handing is easily reversible using only a screwdriver
- Auxiliary latch pin: Stainless steel; deadlocks latch bolt to prevent case-knife entry
- Case: Steel with corrosion-resistant plating 7/8" x 5-13/16"
- Screw-fastened tube spacer brackets allow for cleaner removal when tab mounting
- Strikeplate: Standard strike furnished is 4902 for flat jamb where door closes flush or nearly flush
- Faceplate: 1" x 6-7/8", both flat and radius faceplates are supplied
- Flat faceplates can also be adjusted in the field for right or left hand beveled edge doors
- Retrofits: existing latch locks & 8400 series exit devices

MFG #	BACKSET	FINISH	EZ #
4900 25 101 628	31/32"	Aluminum	102297
4900 35 101 313	1-1/8"	Duranodic	085484
4900 35 101 628	1-1/8"	Aluminum	085485
4900 46 101 628	1-1/2"	Aluminum	085487

### DEADLATCH PADDLES



**4590**



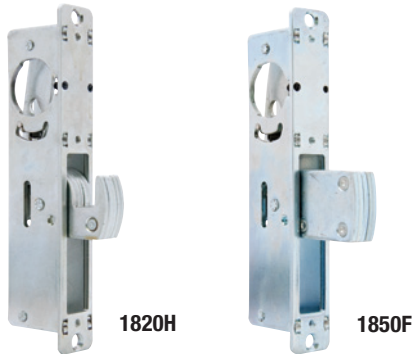
**4591**

- All paddles are reversible
- Units for 4500/4700/4900 series latches include reversible cam disc

MFG #	FINISH	DOOR THICKNESS	EZ #
<b>PUSH TO LEFT</b>			
4590 02 00 313	Duranodic	1-3/4"	001034
4590 02 00 628	Aluminum	1-3/4"	001033
4590 02 02 628	Aluminum	2-1/4" to 2-1/2"	080082
4591 02 00 313	Duranodic	1-3/4"	074885
4591 02 00 628	Aluminum	1-3/4"	074883
<b>PUSH TO RIGHT</b>			
4590 04 00 313	Duranodic	1-3/4"	001038
4590 04 00 628	Aluminum	1-3/4"	001037
<b>ERGONOMIC STYLE: PUSH TO RIGHT</b>			
4591 04 00 313	Duranodic	1-3/4"	074886
4591 04 00 628	Aluminum	1-3/4"	074884
<b>ERGONOMIC STYLE: PUSH TO LEFT WITH MONITOR SWITCH</b>			
4591MA02 628	Aluminum	1-3/4"	074887



### MAXIMUM SECURITY BOLTS



- Maximum security bolt provides for excellent security even when a gap exists between the door & frame
- Laminated bolt provides more strength than one piece design
- Replacement for existing aluminum door flip & hook bolts
- Case size: 7/8" x 6-13/16"
- Flip bolt: 5/8" x 1-3/8" throw for swinging doors
- Hook bolt: 5/8" x 13/16" throw for sliding doors
- Includes both clear & brown anodized aluminum faceplates

MFG #	BOLT	BACKSET	EZ #
1820H118	Hook	1-1/8"	090024
1820H3132	Hook	31/32"	090023
1850F118	Flip	1-1/8"	090026
1850F3132	Flip	31/32"	090025

### DEADLATCHES



- Replacement for existing aluminum door latches
- Case size: 7/8" x 6-13/16"
- Latch bolt: 5/8" x 1" x 5/8" throw
- Deadpin prevents the latch bolt being shimmed open
- Hold back function allows the latch to be "dogged" during store opening times
- Simply hold latch in and turn key backwards to "dog" the latch
- Includes both clear & brown anodized aluminum faceplates

MFG #	BACKSET	HAND	EZ #
4510DL118LH	1-1/8"	Left	103465
4510DL118RH	1-1/8"	Right	090030
4510DL3132LH	31/32"	Left	090027
4510DL3132RH	31/32"	Right	090028

### DEADLATCH LEVER HANDLES



- Works with aluminum door deadlatches such as the LSDA 4510 Series
- Handle is designed to fit the hand and allow for minimum force to open the deadlatch
- Reversible cam disc included

MFG #	FINISH	EZ #
4560L AL	Aluminum	090031
4560L DU	Duranodic	090032

### DEADLATCH PADDLE HANDLES



4590P AL

CAMPLUG

- For aluminum door latches on both outswing and inswing doors
- Reversible cam disc included
- Both Push & Pull stickers included which allows for: Push to Right, Push to Left, Pull to Right or Pull to Left

MFG #	FINISH	EZ #
4590P AL	Aluminum	090033
4590P DU	Duranodic	090034
CAMPLUG	Aluminum	090932