

Driving Student Success Through an Empowered Campus

JOSH DIETRICH

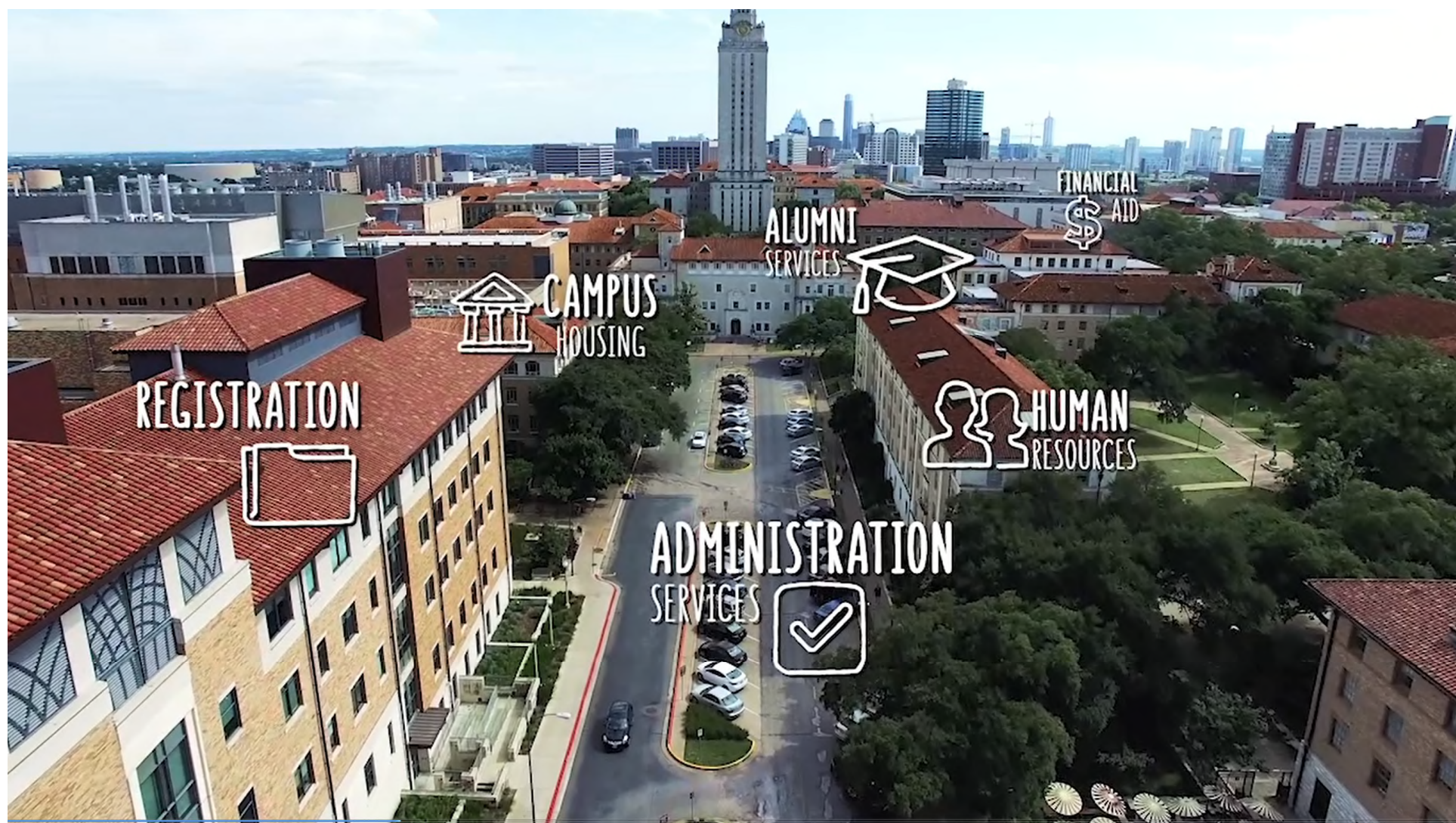
Vice President, Product Management

Ellucian



The Ellucian Journey





REGISTRATION

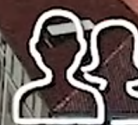


CAMPUS
HOUSING

ALUMNI
SERVICES



FINANCIAL
AID

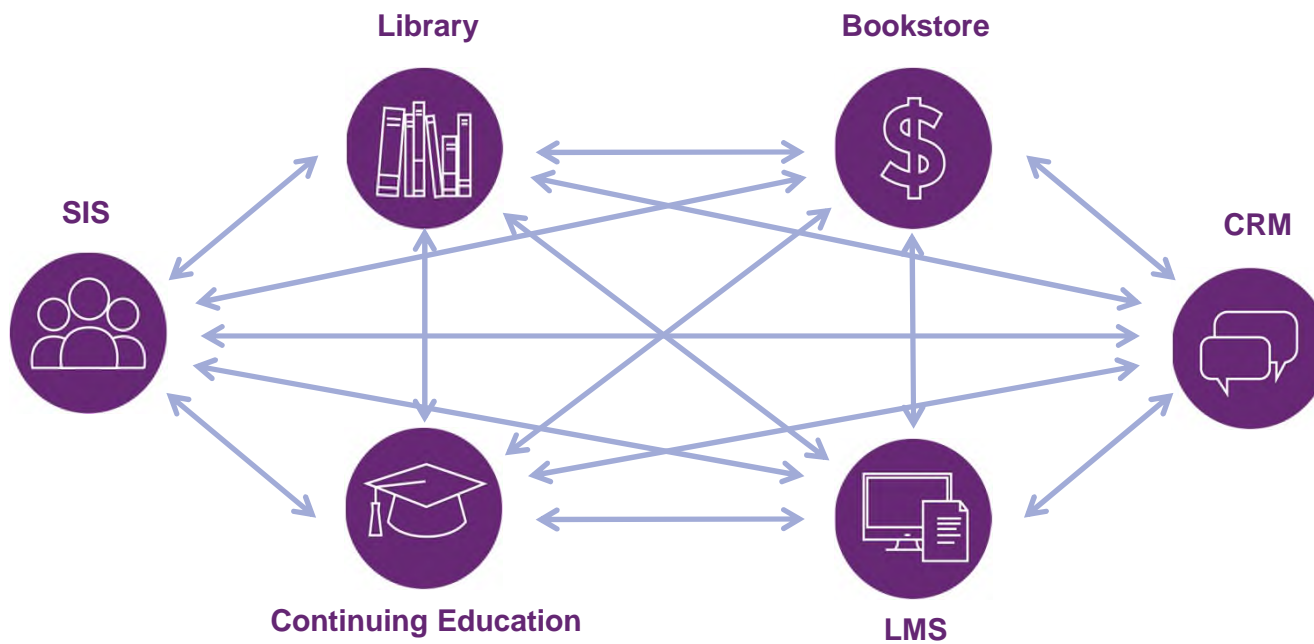


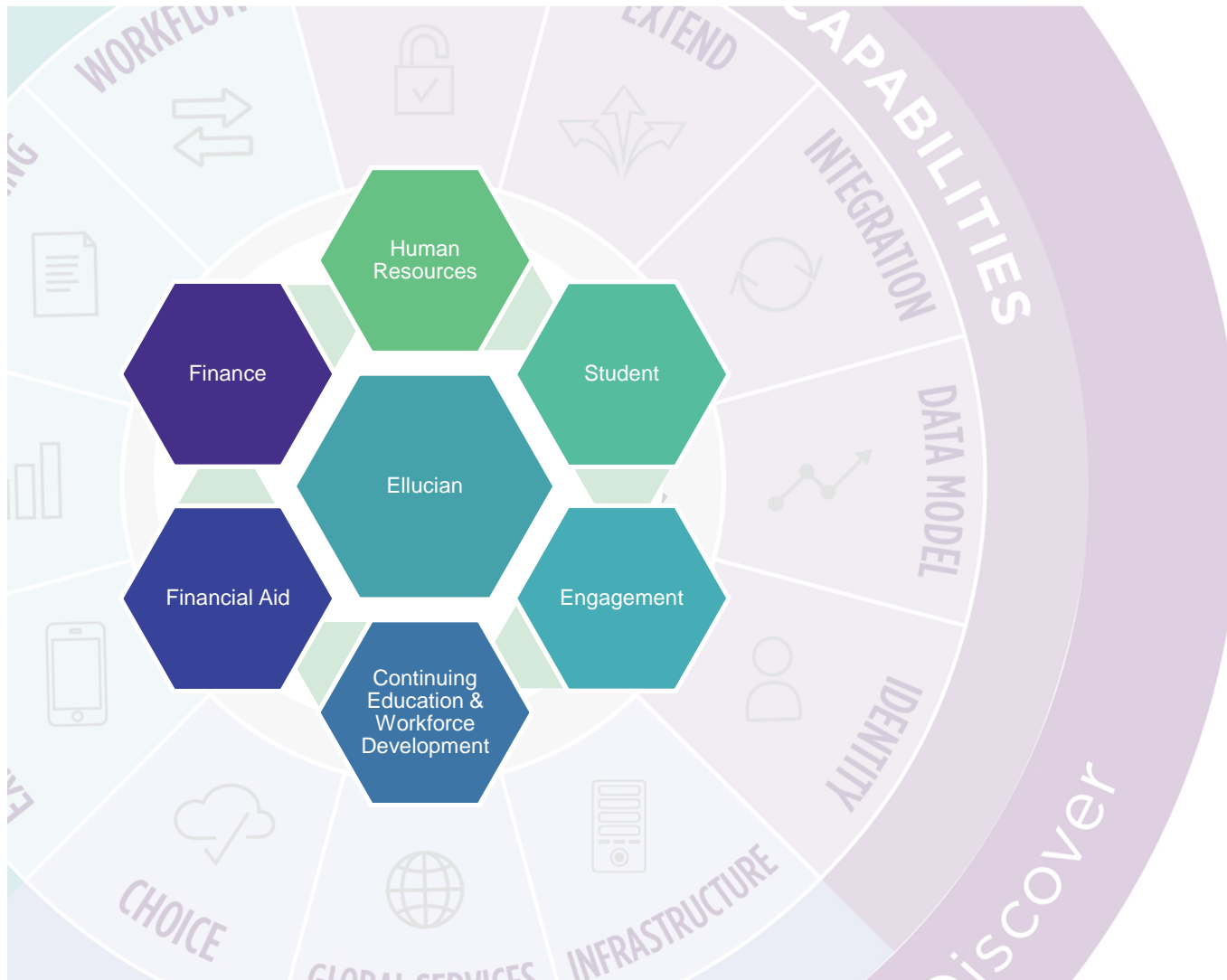
HUMAN
RESOURCES

ADMINISTRATION
SERVICES





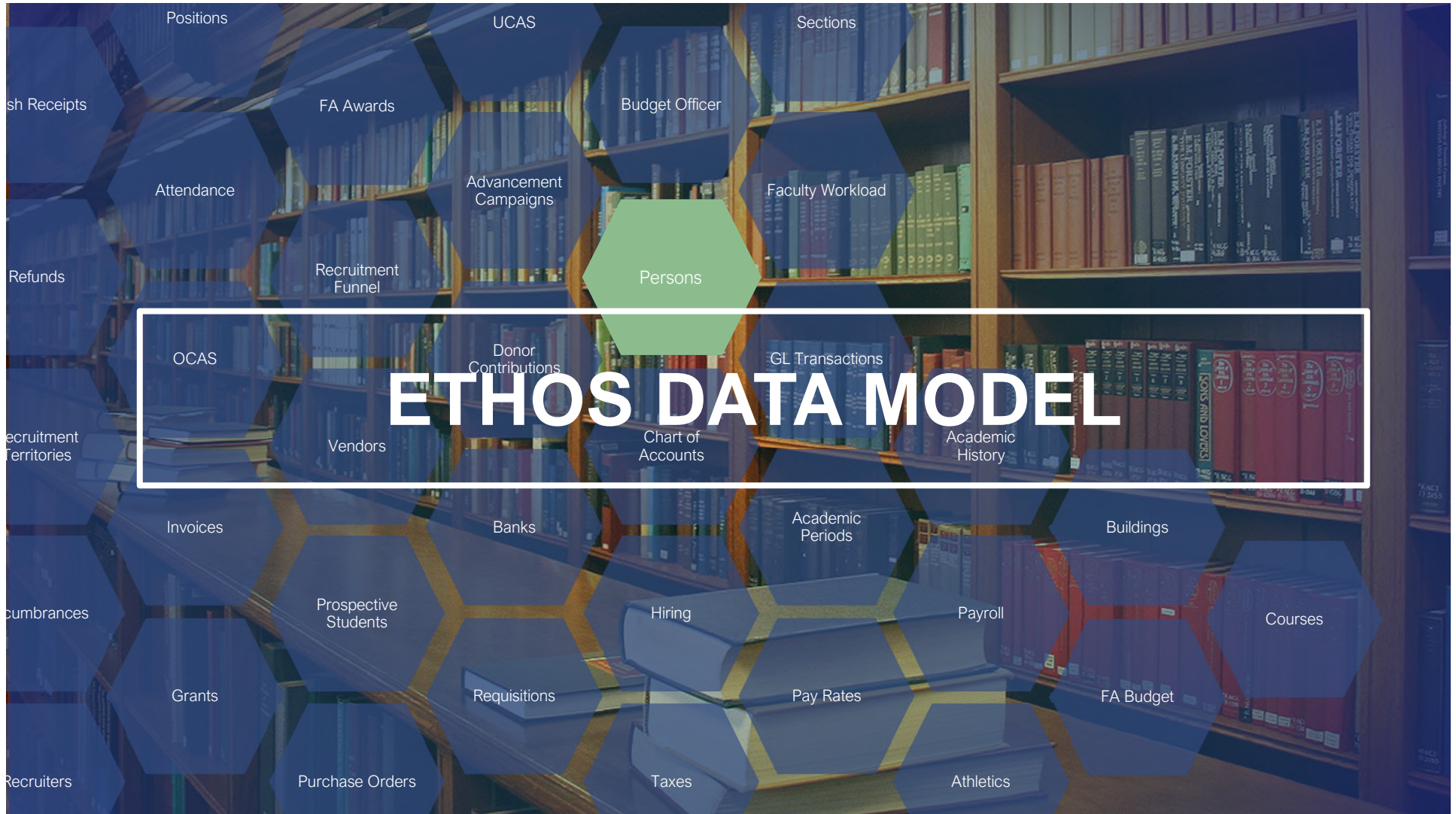




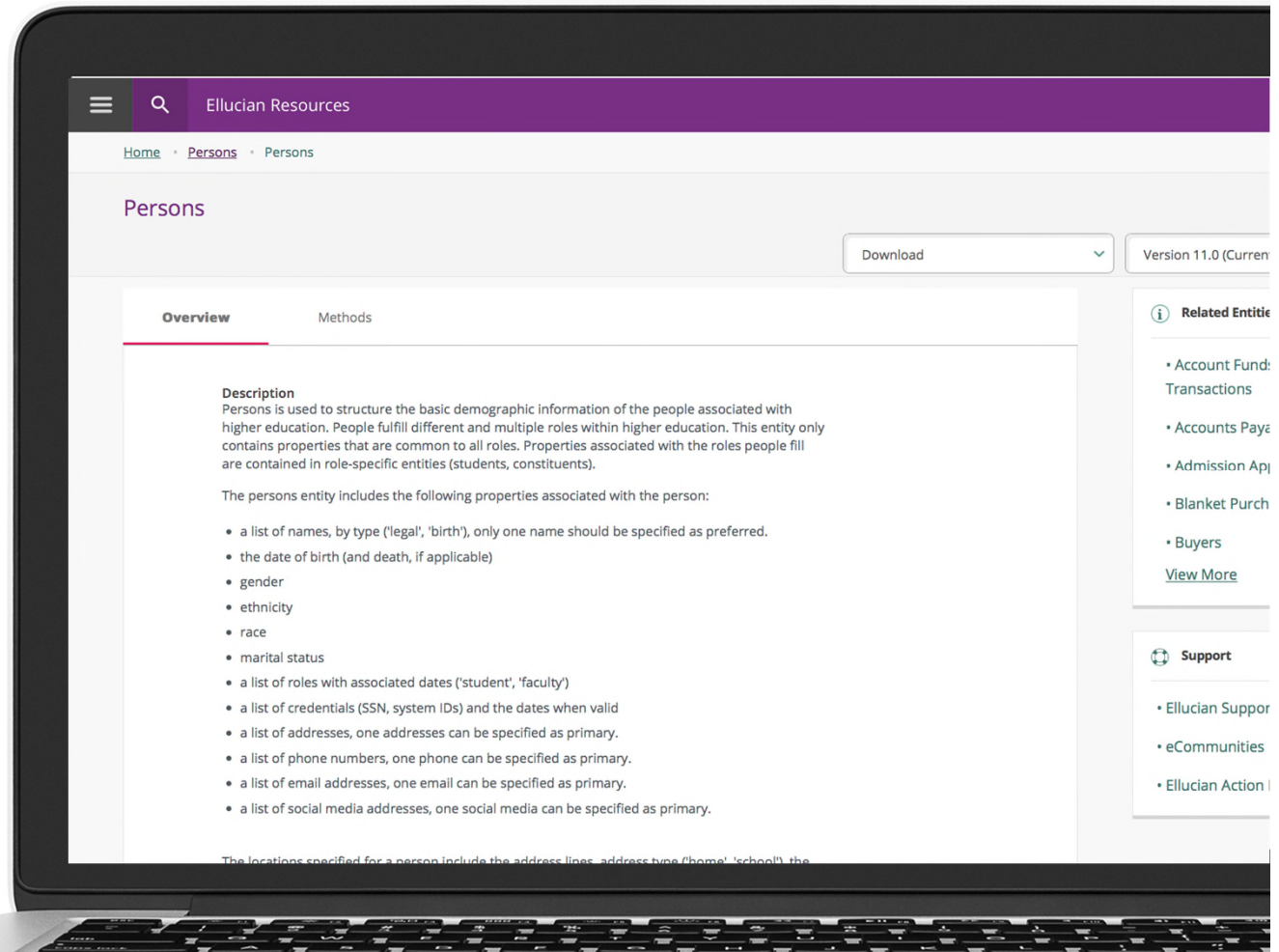
Embracing the
entire campus
through a unified
solution

An aerial photograph of a university campus, featuring various buildings, green spaces, and a central courtyard. The image is overlaid with a dark blue semi-transparent layer that contains a white network diagram. The network consists of numerous circular nodes of varying sizes connected by thin white lines, creating a complex web across the entire frame. In the center of the image, the words "ETHOS FRAMEWORK" are written in a bold, white, sans-serif font, enclosed within a thin white rectangular border.

ETHOS FRAMEWORK



The Ellucian higher education data model



GPA
Hiatus
Student Populations
Faculty
Qualifications
Advisors
Advisees
Schedule
Office Hours
Class Assignments
Teaching
Workload
Contract
Positions
Non-academic
Academic
Account
Payment
Financial
Payment
Deposits
Refunds
Invoices
Cash Receipts
Cashiers
Billing Methods
Billing Periods
Billing Tables
Charges
Financial
Sponsor
Third
Statements
Applications
Prospects

Designations
Marketing Lists
Capital Campaigns
Communications Campaigns
Responses
Contributions
Telefunding
Programs
Memberships
Communications
Awards
Donations
Disbursements
Packages
Loans
Grants
Title IV Grants
Title IV Loans
FA Summary
History
Communications
Budget
Applications
Analysis data
Attendance
Needs
Budget
Loans
Loan applications
Loan disbursements

Person
Bio
Relationships
Emergency Info
Institutional Roles
Comments
Immigration
SEVIS (US)
Credentials
Officers
Interests
Military
Organizations
Contacts
Memberships
Institutions
Buildings
Rooms
Utilization
Availability
Locations
Campus
Scheduling
Events and
Housing
Judicial
Communications
Courses

Recruitment Teams
Employee Summary
Employee Positions
Time and attendance
Departments
Organizational Hierarchy
Employment History
Benefits
Leave
Status
Personnel Action Form
Communications Manager
Employee Tax
Contracts
Faculty assignments
Summary
Pages
Depends
Reductions
Leave accruals
Direct Deposit
Paychecks
Reimbursements
Affordable Care Act (ACA)
4, T4A, etc
Applications
Candidate

Goals
Designations
Donations
Session
Giving History
Giving groups
Communications
Tender
Structure
Staff
Time and Effort Reporting
Work order
Scheduled Maintenance
GEO Regions
Prospects
Assignments
Stages
Wealth Score
Philanthropic Interests
Research
Assets
Ratings
Activities
Proposals
Assets
Wealth
Awards
Philanthropic Interests
Publications
Comments
Ratings
Research
Matching Gift Policies
Corporate Hierarchy
Recognition

An aerial photograph of a large, multi-lane roundabout in a city. Numerous cars of various colors are circulating around the central island. The road has white lane markings and arrows. In the background, there are green spaces, trees, and some buildings. A semi-transparent white rectangular box is centered over the image, containing the text "ETHOS INTEGRATIONS" in a bold, white, sans-serif font.

ETHOS INTEGRATIONS

Learn



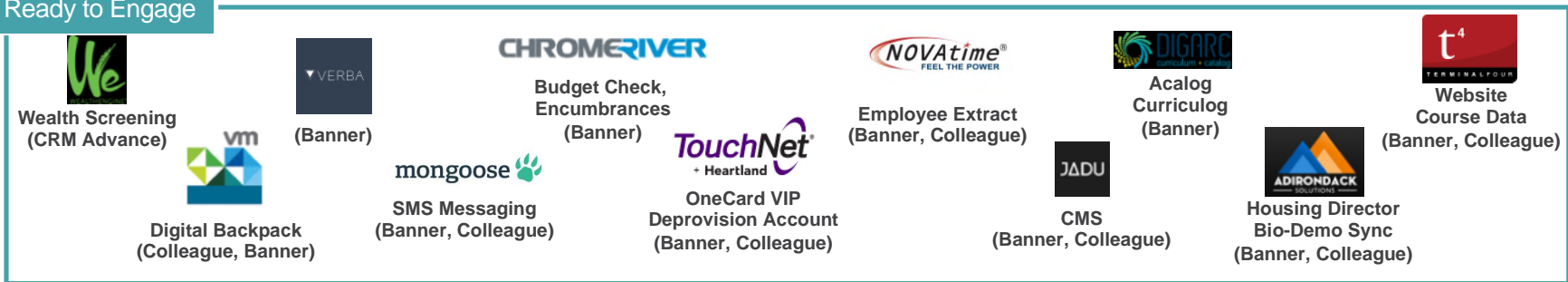
Plan



Develop



Ready to Engage



Information presented here is based on Ellucian's knowledge of partner solution availability at the time of publication and is subject to change. **Solutions may be in a beta, ready for testing, or GA state and may require implementation services.** Customers should contact partners or Ellucian for Ellucian-branded solutions for additional details before making any purchase decision. Customers should contact partners for information on specific applications that are not listed. Integration work may be in progress although timeframes for availability may not have been shared.

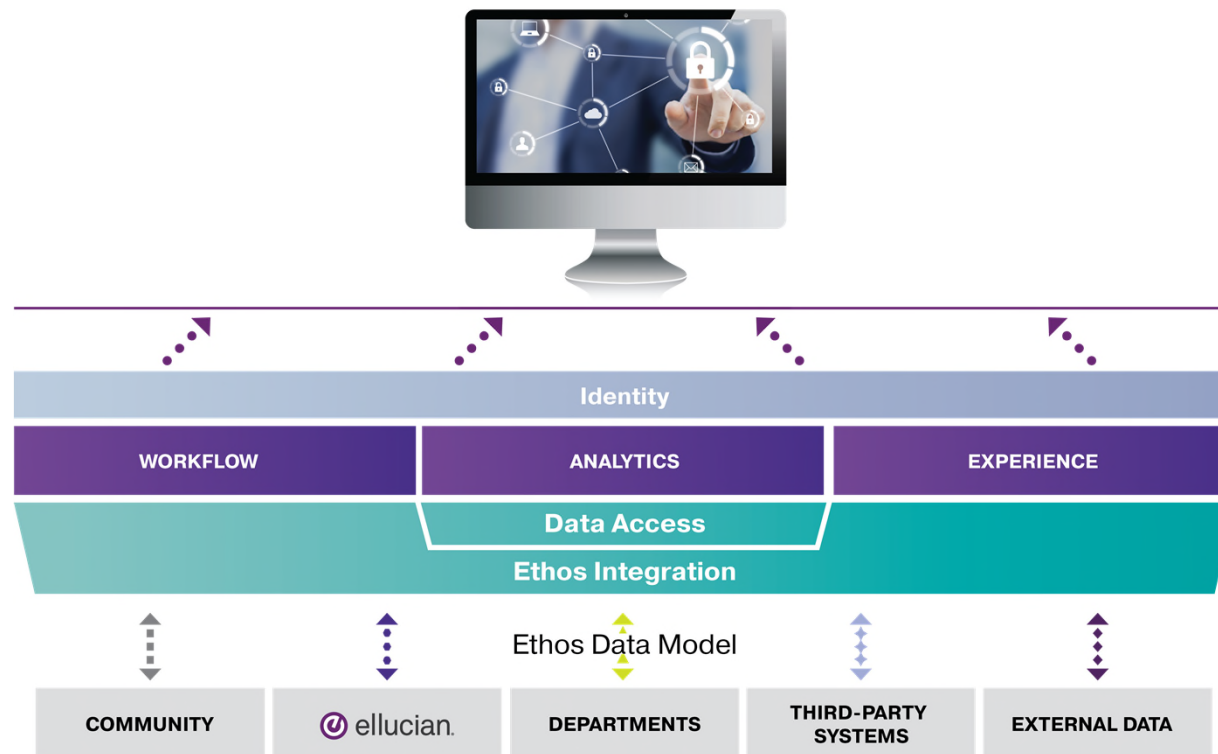


EMPOWERED

A photograph of a group of people in a meeting or collaborative work environment. The image is overlaid with a semi-transparent blue filter. In the center, the word "COORDINATED" is written in a bold, white, sans-serif font, enclosed within a thin white rectangular border. The background shows several individuals; some are holding smartphones, and there are coffee cups visible on a table. The overall atmosphere suggests a modern, tech-oriented workspace.

COORDINATED

Ellucian Ethos Framework



“ Now, integration with the Ethos platform is a key requirement for every system we purchase.. ”



Dr. JIHAD MOHAIDAT
Deputy Vice
Chancellor for
Technology, Higher
College of Technology

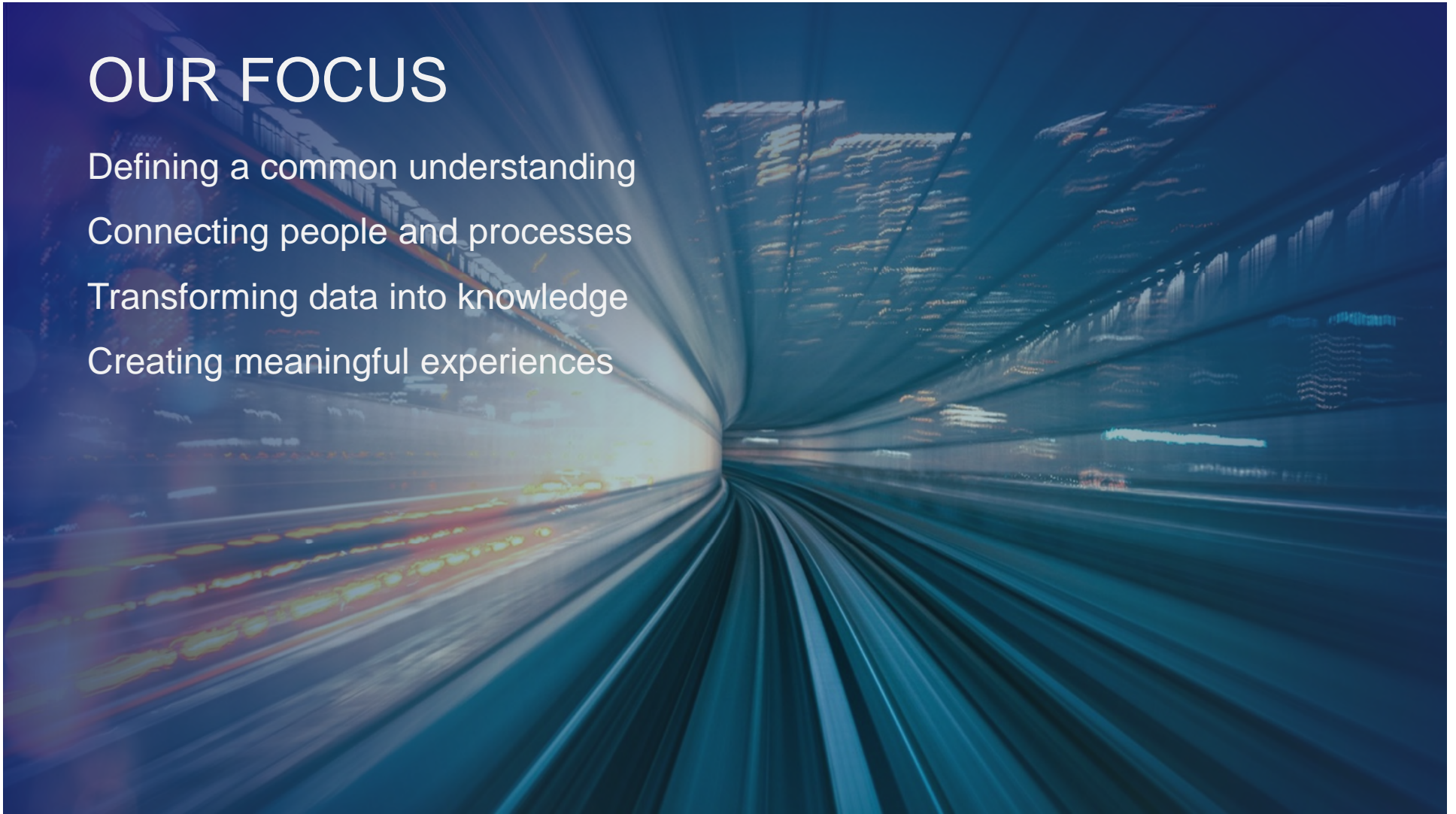
OUR FOCUS

Defining a common understanding

Connecting people and processes

Transforming data into knowledge

Creating meaningful experiences





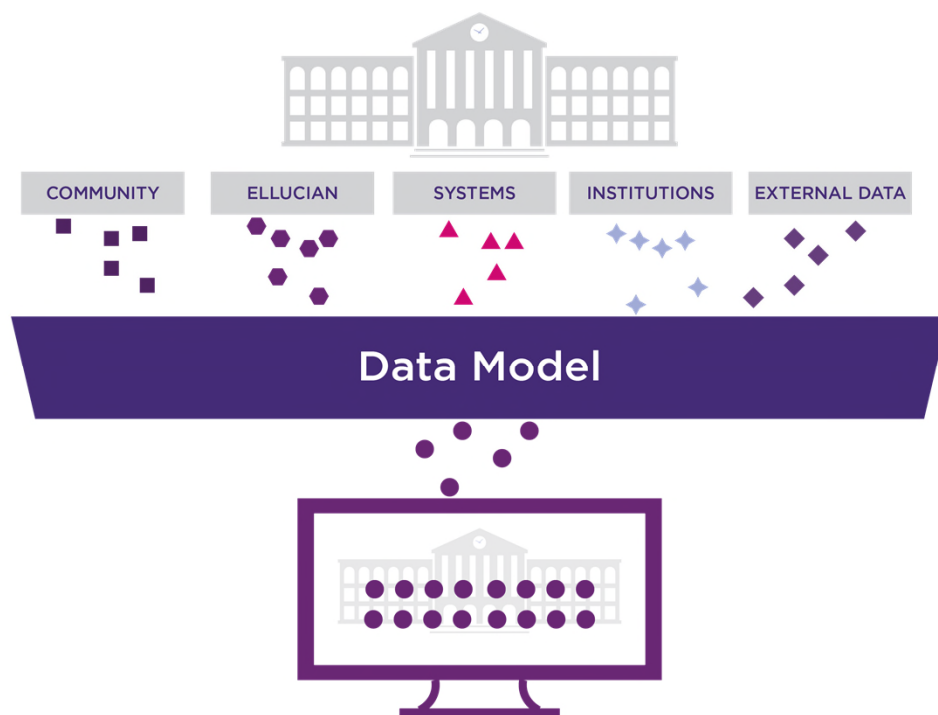
Thank You

JOSH DIETRICH

Vice President, Product Management

josh.dietrich@ellucian.com

Common Language: The Ellucian Ethos Data Model



Unified Vocabulary

Application and platform-agnostic



Open Standards

Built on JSON and REST; consistent implementation



Reusable

No more point-to-point integrations



Single Source of Truth

Unified view of the student

Extensible

The screenshot shows the 'Add Property' dialog box in the Ellucian Ethos Extend application. The dialog is titled 'Add Property' and has a close button (X) in the top right corner. It contains the following fields and options:

- Title ***: A text input field containing 'Reference Number'.
- Name**: A text input field containing 'referenceNumber'.
- Description**: A large text area for additional details.
- Type**: A dropdown menu currently set to 'string'.
- String Type**: A section for further string configuration.
- Nullable property**: An unchecked checkbox.

At the bottom of the dialog are two buttons: 'Cancel' and 'Add'.

Configuration

The screenshot displays the 'Configuration' page of the Ellucian Ethos API Management Center. The page has a purple header with the 'ellucian' logo and navigation links: HOME, WHAT'S NEW, INSTALLATION, and CONFIGURATION. The main content area is titled 'Ellucian Ethos API Management Center' and shows a 'Welcome' message. Below this, there's a 'Configuration' section with a sub-header 'seleniumTest3:17:52 Environment'. The page is divided into several tabs: API SETTINGS, ISO CODE MAPPINGS, EMS SETTINGS, and EVENTS. The 'API SETTINGS' tab is active, showing a list of API categories on the left (Finance, Financial Aid, Foundation, Human Resources, Recruit, Student, ACCOUNT RECEIVABLES, CURRICULUM MANAGEMENT, COURSES) and a table of 'student-academic-period-profiles' on the right. The table has columns for Name, Type, Ethos Value, and Source Value. It lists three profiles: 'Academic load code' (mapping, fullTime, FT), 'Academic load code' (mapping, overLoad, OL), and 'Academic load code' (mapping, partTime, PT). A 'Save' button is located at the top right of the table.

Name	Type	Ethos Value	Source Value
Academic load code	mapping	fullTime	FT
Academic load code	mapping	overLoad	OL
Academic load code	mapping	partTime	PT