

September 2017

[www.nmra-scwd.org](http://www.nmra-scwd.org)

Volume 49 No. 1

## Super's Report

Bob McGeever  
Division Superintendent



My first two layouts were practice layouts. The new one is supposed to last a long time. So with the new layout comes some new tools.

My favorite of the new tools is a set of carpenter's knee pads. Crawling around on a basement floor is hard on the knees no matter how old you are. The best method I know of to find a small screw that was dropped on the floor is to get down on my hands and knees to work under the layout. It works every time. Putting your weight on a knee that has a screw under it really smarts. With the knee pad it is more of a princess and the pea situation. I am still finding the screws by kneeling on them but it doesn't hurt any more. My joke about wiring up the layout is that if it doesn't hurt you are not doing it right. A good set of knee pads makes it a lot less painful to do the job right. The wear and tear on the knees is greatly reduced. I should have bought them a long time ago.

Another of the new tools is a wire tacking staple gun. On my first layout I used a variety of screw on wire holders to keep the feeder wires in place as I connected them to the power bus. They were often difficult to attach to the framework. I dropped a lot of screws while crawling around under that layout. On my second layout I tried all sorts of sticky backed wire holders to keep the feeder wires in place. I figured this would simplify the job. I could just tack a feeder to the foam as the wire came out under the sub-road bed, run the wire in a straight line to the bus, tack it in place again and be good to go. Some of wire holders were products I had used in the factory I worked at. They lasted forever in our products. But we were applying them to a

### Next SCWD Meet:

Sept 10<sup>th</sup> 2017 1:00 pm  
Zor Shrine Temple

### Clinics: Page 2

### Model & Photo Contests: Page 3

### Next BOD Meeting:

September 11<sup>th</sup> 2017 7:00 pm  
Fitchburg Fire Station

### Next Youth Group Meeting:

Sept 17<sup>th</sup> 2017 1:00 pm  
Zor Shrine Temple

clean metal chassis. I learned wood and foam do not work the same. After one or two seasons in my basement they all started to let go and the wires sagged down into the storage area under the layout. Towards the end of the life of the second layout there was a lot of duct tape holding up the wires. I needed a better plan for the new layout. The staple gun is a great solution. All the feeders are stapled to the wood framework. They will stay put forever. If I can reach a spot on the framework, I can put a staple in it. I don't have to put much planning into the wire runs as long as I keep them on the framework. It really speeds things up and the pain of good wiring is reduced.

A pair of snap-off blade utility knives. Not the disposable box cutter types. A pair of rugged knife handles with replaceable blades from DeWALT. One uses a 9 mm blade and the other uses an 18 mm blade. These things are great. Keep them sharp and they will make nice clean cuts in foam sheets. I used the 18 mm blade to cut 1 and 2 inch sheets of foam to fit on my bench work. Both blades can be used to carve foam for use as scenery. The 9 mm blade is a good substitute for the #11 hobby knife blade.

A SPROG IIV3 DCC Decoder Programmer. I hook it up to a test track on my work bench and my lap top running JMRI Decoder Pro to test and set CVs on my DCC locomotives. The new layout is DCC. The prior two were DC. I have a small fleet of diesel locomotives to upgrade. I started working on them before I had any track on the layout. It works so well I am not planning to have a programming track on the layout.

An RRamp Meter. Something always happens during the construction of a layout where I just have to measure the track voltage. I know from my time as a lab tech that I could purchase a Fluke True RMS Digital Voltmeter that would do a wonderful job of measuring the DCC track voltage. The RRamp Meter will do it just as well for a fraction of the cost.

A Bosch GLL2 laser level. My wife kind of rolled her eyes when I picked this up during one of our many trips to Home Depot last summer during the time of the home addition. But then she got to use it to set the lines for the tile in the shower stall before I got to use it for the layout. She loved it. I used it to check the wall mounting lines for the old layout. I was very careful setting those lines because I knew the basement floor was not level. Lots of string and a big bubble level were involved. The laser revealed I was not careful enough. I always thought the trains ran like there was a slight grade going from the east side of the old layout to the west side. The laser confirmed it. The laser really earned its keep when I had to set the wall mounting lines as the layout went through the doorway between the old and new parts of the basement. There is a right angle bend in the layout as it comes through the doorway. I got about 10 feet of laser line on each leg of the bend to preserve the level of the layout between rooms.

And for the rest of my life I will have no excuse for hanging a picture crooked.

Hope to see you at our September meeting,

Bob

## The Clinic Corner

Bob Wundrock  
Clinics Chair

Cody Grivno of Model Railroader magazine will start off our new SCWD meeting year.



Cody Grivno, associate editor of MR, will join us at the September meet for a presentation on the history of railroads in Crookston, Minnesota. It's part of the planning stage for his home layout.

Using Sanborn Fire Insurance maps, postcards, and prototype photos, among other sources, Cody will share how the town's railroad scene evolved over the decades. Railroads covered include the St. Paul, Minneapolis & Manitoba; Northern Pacific; Great Northern; Burlington Northern; and Minnesota Northern.

Our second clinician(s) will be Steve Lanphear and me. The title is "MWR 2017 Convention Layout Tour," which will be a slide tour of 11 layouts visited by Steve Lanphear and Bob Wundrock.

Bob



### SCWD Members On the Road

Visiting Bruce Chubb's  
HUGE "Sunset Valley  
Oregon System" layout on  
August 11, 2017

Sean Lamb, Bill Weber,  
Bruce Chubb, Bob Wundrock, and  
Ken Hojnacki





# Contest Column

Dave Lendved and Steve Lanphear  
Contest Co-Chairs

The September 10 SCWD meeting kicks off another model railroad season. Here in the Contest Corner, we are looking forward to having the best popular vote contests ever. To do this, we need YOU! Contest participation is a great way to contribute to our division. It is also rewarding to get feedback and recognition for your efforts. Our goal this year is to have “universal” participation. We would like to see everyone enter at least one photo or model contest this year.

We’re starting the monthly contests with the theme: Boxcars. Is there any model railroader who doesn’t have a photo or a model of a boxcar? There’s your entry!



September 10 Contest Theme: Boxcars

- Cat. A Wood<45’
- Cat. B Wood>45’
- Cat. C Steel<45’
- Cat. D Steel>45’

We will also be trying something new this year: A VIDEO contest. This is another way to participate in the Division. Three to five minute long videos will be entered and voted for online. Results will be announced at the April 8 meeting. Details will become available as we figure them out!

Dave and Steve

## Youth Group

Steve Brist

The SCWD Youth Group had two interesting model railroad activities this summer. In July our members and their families were invited to the annual SCWD Picnic and Little Americka in Marshall. Those who arrived early got to choose between visiting the N scale model railroad layout of Roy Grant or going to the rail yard of the Whiskey River Railway. The Whiskey River is the live steam operation at Little Americka and some of us enjoyed visiting the roundhouse watching the engine crews ready the live steam locomotives. Others enjoyed seeing Roy Grant’s Omaha Western. The morning activities were followed by a catered picnic at the Pavilion at Little Americka Park. Observers also reported seeing Youth Group members on several rides later that afternoon!



In August about 15 members and their families took part in the annual summer Youth Group Field Trip. This year, our members made the trek to Argyle, Wisconsin, to visit the Toy Train Barn. The Toy Train Barn is exactly what the name implies. It’s a former dairy barn that is filled with model trains. The owner of the Toy Train Barn is

Buck Guthrie, an actual engineer for the Wisconsin and Southern Railroad. He filled the barn on the farm where he grew up with his collection of Lionel, American Flyer and other scale trains. He has also built all the scenery, much of which is animated with scratch built machines along the tracks. Buck’s wife claims that many of the machines started out with parts that came from their household, including her kitchen. But Buck says that the household goods have merely been ‘repurposed’! Thanks to Bob McGeever for assisting with this event.

Our first meeting for the new season will be Sunday,



September 17, at 1PM at Zor Shrine Temple, 575 Zor Shrine Place, on Madison’s west side behind REI. We usually meet on the third Sunday of the month, except when we have events, like Rail School or the Train Show. We look forward to another fun year of model railroading.

Steve



## NMRA MIDWEST REGION CONVENTION MADISON, WISCONSIN • APRIL 13-15, 2018

It's September again and you might be wondering what the Make and Take project will be for this year. Well, being the Capitol 400 Midwest Region Convention Chair and trying to get my layout ready for visitors, I won't have enough time to prepare a construction project for this year. Sorry, next year. But the convention gives you lots of opportunities, and hopefully a little extra nudge, to work on some projects that can also apply toward an AP Award.



There are several categories that would give your modeling skill it's time to shine. How about taking some of the skills you gained building styrene coil loads or wood pole loads and take a shot at a scratchbuilt structure or car? It doesn't have to be big and it doesn't have to win a contest, although I would encourage you to enter such a model in the model contest at the convention. Having it judged for a Merit Award will begin (or bring you closer to) earning your Master Builder Structures or Cars award.

Phil Hottmann is looking for layouts for the layout tours during the convention and what better impetus to get those projects completed for our fellow Region members to view. While you're working on the layout, why not keep a list of the projects that qualify toward the Civil, Electrical or Scenery Awards? Maybe you won't meet all the requirements by the convention but it will be a start and a great step toward that award. Not doing big projects on the layout? How about the Golden Spike Award? If you haven't already earned that one, it is very simple, with some minimum track, scenery, structure and operational requirements that don't need formal judging or earning of merit award points. We currently have 18 members who have earned their Golden Spike and we would like you to join the group.

Let's not forget a couple of other awards with a convention connection. Thinking about showing us that great modeling technique you came up with? How about that program on how you operate your Bugtussle Southern layout? Bob Wundrock is still looking for clinics for the

convention and he would love to hear your ideas—and you can earn points toward your Author certificate, too.

Last but not least, Volunteer. We will soon be calling for assistance during the convention in areas such as Registration, facility management, etc. And some layout owners may be looking for help during their open houses for the layout tours—owners spend more time talking about their layout and can't handle trains and crowd control all by themselves. Time volunteered for these efforts as well as being host at your own layout go toward your Volunteer certificate.

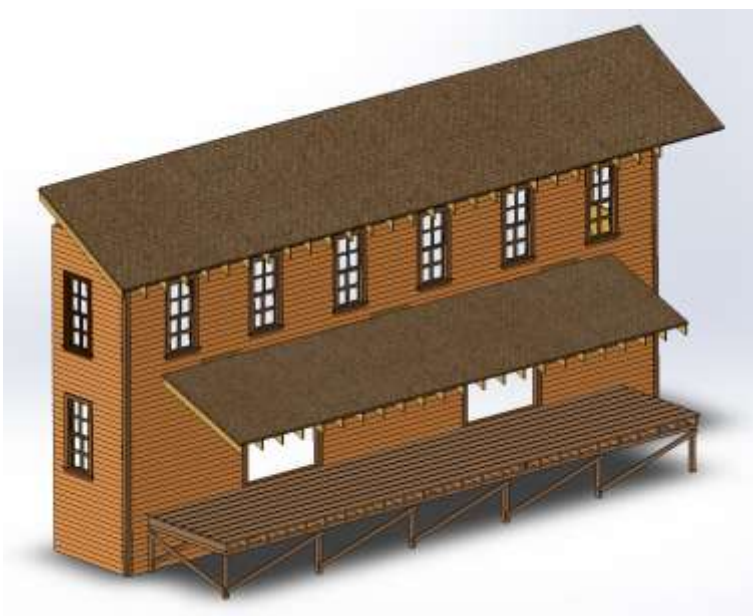
So, while I won't be challenging your modeling skills with a Make and Take this year, the convention is offering even more challenges with Achievement Awards as an added incentive. Take a look around, see what begs attention on your layout and plan on being part of the Capitol 400 convention in April.

Ken Hojnacki  
Convention and AP Chairs

## Modeling Project

Phil Hottmann  
Modeling Project Chair

The development of this year's modeling project is nearly complete. Here's an image of the design. The build is 7" wide, 4" tall and about 3" deep. (HO scale)



I hope to have an initial mock-up of the building at the September meeting. More information should be available then.

Phil



## Layout Tours

Phil Hottmann  
Layout Tour Chair

We're hoping to have Paul Mangan's layout open for the September meet. As you may know several trees fell on Paul's layout in a recent storm. If Paul can get his railroad up and running we'll have it open.

We will be looking for more layouts to be open for the rest of the season. So, if you're interested in being open please contact me.

We also have the upcoming Regional Convention coming up in April. I'll be sending out inquiries to people I know are interested or have been open for the previous conventions. If you do not receive an inquiry and you would like to be open, please contact me.

Phil



### SCWD Board of Directors Meeting Minutes\* June 12, 2017



The Board of Directors meeting for the 2016-2017 South Central Wisconsin Division, Midwest Region, National Model Railroad Association was called to order at 7:00 p.m. on June 12, 2017 by Superintendent Bob McGeever. In attendance were Board members **Dave Lendved, Bob McGeever, Mike Vivion, Phil Hottmann, Jerry Lawler, Ken Hojnacki, Bill Clancy, and Phil Berry.**

**Minutes Approval:** Minutes for the April 2017 meeting were approved with amendments as to attendance.

**Paymaster Report:** Paymaster report was approved. Budget for 2018 was reviewed in depth and approved.

#### **Committee Reports:**

**Advertising:** Advertising rates were frozen for 2018.

**Club Liaison:** Nothing to Report – Position remains unfilled.

**Clinics:** 2018 schedule published in the Bad Order.

#### **Modeling Project for 2017-2018:**

Phil Hottmann agreed to take on responsibility for the modeling project this year. Mike Vivion and several

BOD members agreed to help Phil out as needed. Modeling area will be building flats. Due to costs, there may be an increase in cost of participation or we may reduce the complexity of the project.

**Door prizes (Meetings):** Bill Weber will be responsible for the meeting door prizes and has budget.

**Layout tours:** Craig Larimar will be hosting a September layout tour. We may provide additional UTube video tours of unique layouts. The board discussed including unfinished and smaller layouts included in the tours for the upcoming year. This will allow members to share their thought processes as they design and build new layouts. It will also allow members to provide feedback/ideas to those building layouts.

**Picnic:** Picnic date is July 15 and Little Amerika was chosen for this summer. July 15<sup>th</sup> is the weekend of the 'Whiskey River Days'.

**Web Site:** Paypal should be ready in early fall to gain experience with it for the 2018 show. Jerry Lawler has met with Tom Morrison to continue to move the development of the website forward.

**Capitol 400:** A one page notice web site has been created. Op session text is done. Video may be added. More coordination work with the hotel is underway. A promotional DVD will be created and sent to all divisions in the region.

#### **Old Business:**

BOD and Chairs for 2018 were elected.

#### **New Business:**

**Adjournment:** Jerry moved and Ken seconded and the Board approved adjournment at 8:25 pm.

Respectively submitted by  
Jerry Lawler, SCWD Chief Clerk

\*Minutes condensed for publication in the Bad Order



# Perfect Weather makes a *Perfect Picnic!!!*



On July 15<sup>th</sup> SCWD members and their guests enjoyed a Hy-Vee catered picnic at Marshal's "Little Americka". 113 signed up and it appeared that most made it. In addition to the food pavilion, Little Americka provided steam train entertainment on their expanded Whiskey River rail line with several different steam engines running. There were many photo opportunities and the weather was great.



I also want to thank Roy Grant for opening up his own expanded Omaha Western BNSF & UP N-scale home layout prior to picnic time. Amazing what a talented modeler can do in N-scale!

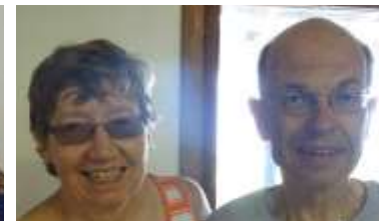
John Haverberg  
SCWD Summer Picnic Chairperson



A big thank you to **John Haverberg** for again planning our annual SCWD Summer Picnic at Little Americka.







***All Aboard for the Capitol 400  
Midwest Region Convention.  
April 13-15, 2018  
Madison, WI***

- Operating Sessions Friday Afternoon and Evening
- Clinics Friday Evening and Saturday Morning and Afternoon Including:  
The Photography of O. Winston Link
- Layout Tours Saturday Afternoon and Sunday
- Non-Rail Activities Including Project Linus
- Every Registration Includes the Banquet with Guest Speaker Tony Koester



Model Railroader Editor Tony Koester



Visit **[www.nmra-scwd.org](http://www.nmra-scwd.org)** for details.

***Come Join The Fun!***



# Tales of the Cat Mountain Railroad versus Nature!!!

Paul Mangan



I hope your summer has been going well. Unfortunately this tale has to do with Mother Nature and the world of outdoor modeling of a railroad. When you are dealing with the elements you get to know what the prototype railroads go through on a much smaller scale of course. G- Scale to be precise.

On a pleasant evening in July my wife Kathy and I went to an outdoor theater west of Madison WI to enjoy a play. After our pre play picnic we heard thunder in the background. We were then told by the staff that tornados were in the area and we needed to go to the shelter. Things went downhill from there. It took about an hour before the main part of the storm passed and the show was called off.

We were riding with a group of friends that evening and were given the clearance to leave. With SCWD member Donn Tolley at the helm we headed back to Madison. It was not a smooth ride as the back side of the storm hit us while we were on the road but our skipper kept us on spot and we made it home.

When we arrived home we noticed there was a power failure as the entire neighborhood was dark. We then got our candles out and hunkered down for the night. In the morning I looked out the window and saw that two large trees had been uprooted and fell across the Cat Mountain Railroad. Wow, what a mess. It looked like a total disaster and I thought the whole layout was trashed.



While on the inspection tour it looked a little more promising. Both trees had fallen without any serious damage to the railroad. All the buildings can be glued back together. The few cars on the track were just knocked over. The main road through the village however did not fare as well though as the pavement buckled when the tree roots pushed upward as they fell.

With the exception of the Cat Ale Brewery siding being shifted about a G-scale quarter mile and a

bridge abutment being pushed down a bit this point damage to the layout appeared minimal. I did find a sink hole under the road crossing but fortunately nothing fell in.



The first order of business will be to get the trains running to get the supplies up to the mountain. Then put the buildings (about 10) back together starting with the brewery, Ha! The MWR convention will be here before you know it so I need to have it in Train Shape (not Ship Shape).



I want to say thanks to all the lumber jacks that came out to clear the wood. I'll keep everyone updated.

Mother Nature, you won this one but we'll be baaaack!

Cat Mountain Work Crew ^ . . ^  
Chain Saw Paul







## Introducing the NMRA Partnership Program

Starting now, NMRA members get discounts from our  
partner manufacturers!



*Your leadership team has been working with model railroad manufacturers of all scales to bring you substantial discounts when you order from them. Now we're ready to unveil the first of our partners!*

*This list will keep growing and growing, so check our website in the "Members Only" section at <https://www.nmra.org/members/partnership-program> every month for the newest manufacturers to be added, and for the newest discount codes. Discount codes will change monthly, so check back often!*



### BOB BOELTER'S O SCALE GREAT WESTERN RAILROAD HAS MOVED TO STONEFIELD



The model railroad has been donated to the Wisconsin Historic Site in Cassville to be rebuilt in one of the village's buildings (see [stonefieldhistoricsite.org](http://stonefieldhistoricsite.org)). Funds have to be raised for the reconstruction. Contributions can be made to Stonefield Historic Site, 12195 County Highway V V, Cassville, WI 53806 and identified for "Stonefield Model Railroad". If you'd like to help in other ways contact Bob at [bboelter1@gmail.com](mailto:bboelter1@gmail.com)



Visit [gwrr.org](http://gwrr.org) for layout pictures and more information



# **MADISON HOBBY STOP**

6622 Mineral Point Road, Madison, WI 53705

Ph: 608-829-3820 • Fax: 608-829-3852 • [www.madisonhobbystop.com](http://www.madisonhobbystop.com)

**Hours: Monday – Friday (10 am – 8 pm) and Saturday (10 am – 5 pm)**

Model Railroading • Plastic Model Kits • Rockets & Accessories • Pine Car • Paints • Tools &

**\*\*\*\*\*Starting March 5th closed Sundays until November\*\*\*\*\***

**Now that summer is coming to an end,  
it is time again to get the trains running!**

***Stop in between September 5<sup>th</sup> and September 11<sup>th</sup> and  
help me celebrate my 13<sup>th</sup> Anniversary***

**Many specials all week,  
and a good time to stock up on  
all the supplies you need for the layout**



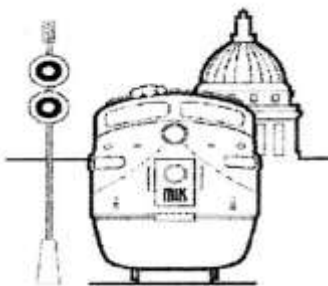
**Preorders are 25% off regular price except  
Walthers Proto which is 20% off**

**New/old consignment coming in weekly, stop in for best selection**

**Remember, most model railroad items are 20% off  
with a valid NMRA or other club id card**

*Excludes discounted or sale items, magazines, and consignments*

**Gift Certificates Available**



Madison Hobby Stop  
Chris Roosli, Proprietor



 **ADAIR SHOPS**  
 Weight Upgrades for Improved Model Railroad Operation

 Weight upgrade kits for  
 HO freight and passenger  
 cars (RTR and kits)

 HO steel plate  
 and beam load kits

 HO & N bridge kits

For a complete list of kits, along with additional  
 photos and sale items, visit our website.  
[www.adairshops.com](http://www.adairshops.com)

Adair Shops, PO BOX 344, Dyersville, IA 52040  
[adairshops@yousq.net](mailto:adairshops@yousq.net)

**Train Guyz LLC**

*We can make your Model Railroad dreams  
 come true*

2903 Robin Court  
 Fitchburg WI. 53711

608-215-6346  
[Vivion2@tds.net](mailto:Vivion2@tds.net)

*Mike Vivion*

**The Hobby Depot**  
 Brian Stackpole, owner

See us on the web at: [www.hobbydepotmonroe.com](http://www.hobbydepotmonroe.com)

835-17th Street  
 Monroe, Wisconsin 53566  
 Phone: 608-325-5107  
 Call ahead to be sure we're open!  
 email: [hobbydpo@tds.net](mailto:hobbydpo@tds.net)  
**TRAINS & MORE**

**ADVERTISE  
 YOUR  
 BUSINESS  
 HERE**

**Ad Space Available**

**Contact**

Kathy Clancy Editor  
[SCWDKathy@aol.com](mailto:SCWDKathy@aol.com)

**South Central Wisconsin Division of the  
 National Model Railroad Association**

Publishes eleven issues yearly of the

## **BAD ORDER**

Official Mailing Address:  
 BAD ORDER  
 3940 Trempealeau Trail  
 Verona, WI 53593

Photos in the Bad Order, unless otherwise noted, are by  
 Kathy Clancy

Deadline for submissions: **14th of the month prior to  
 publication, unless otherwise noted. Email Bad  
 Order Editor at [SCWDKATHY@AOL.com](mailto:SCWDKATHY@AOL.com)**



If you move, don't forget to notify  
 Kathy Clancy the Bad Order Editor.  
 Changing your address with the NMRA  
 does not change it for Bad Order  
 mailing.

Thanks!

## PLEASE PATRONIZE OUR AREA HOBBY STORES

The Hobby Depot – 835 17<sup>th</sup> Street – Monroe WI

Madison Hobby Stop – 6622 Mineral Point Rd (inside Clock Tower) – Madison WI \*

### 2017-18 Meeting Time Table

**Regular Meeting**

Sept 10<sup>th</sup> 2017

Oct 1<sup>st</sup> 2017

Nov 5<sup>th</sup> 2017

Dec 3<sup>rd</sup> 2017

**BOD**

Sept 11<sup>th</sup> 2017

Oct 9<sup>th</sup> 2017

Nov 13<sup>th</sup> 2017

Dec 11<sup>th</sup> 2017

**Youth Group**

Sept 17<sup>th</sup> 2017

Oct 15<sup>th</sup> 2017

Nov 19<sup>th</sup> 2017

Dec 17<sup>th</sup> 2017

**Train Show**

Sept 6<sup>th</sup> 2017

Oct 4<sup>th</sup> 2017

Nov 1<sup>st</sup> 2017

Dec 6<sup>th</sup> 2017

**Convention**

Sept 20<sup>th</sup> 2017

Oct 18<sup>th</sup> 2017

Nov 15<sup>th</sup> 2017