

**1477827 ALBERTA LTD**

**Purpose : SAND & GRAVEL  
SKETCH PLAN SHOWING SML  
WITHIN**

South Half of Section 6 of TWP. 75 RGE. 04 W.5.M.  
West Half of Section 31 of TWP. 74 RGE. 04 W.5.M.  
NE Quarter of Section 36 of TWP. 74 RGE. 05 W.5.M.  
Municipal District of LESSER SLAVE RIVER NO. 124








**AREA TABLE & DIMENSIONS**

Total Area (Unsurveyed Territory) = 32.374 ha / 79.996 ac.  
New Cut = 32.374 ha  
Existing Cut = 0.00 ha  
Dimensions: Irregular

**NOTES:**

- Azimuths in Degrees, Minutes, Seconds
- Distances in Meters
- Convergence from True North: 1 deg 57' 47"
- Grid derived from published ATS V 4.1 coordinates from NE 36-74-5-5 to NE 25-74-5-5
- Reference Coordinates, 6148687.64 N, 650636.53 E UTM Nad 83 Zone 11 Original (Original)

**Legend**

-  Existing Surface Dispositions
-  Proposed SML Boundary
-  Unsurveyed Territory
-  Surveyed Territory
-  Seismic Lines or Trails
-  Treed Areas (Vegetation)
-  Reference Point

TECHNICAL SERVICES BRANCH

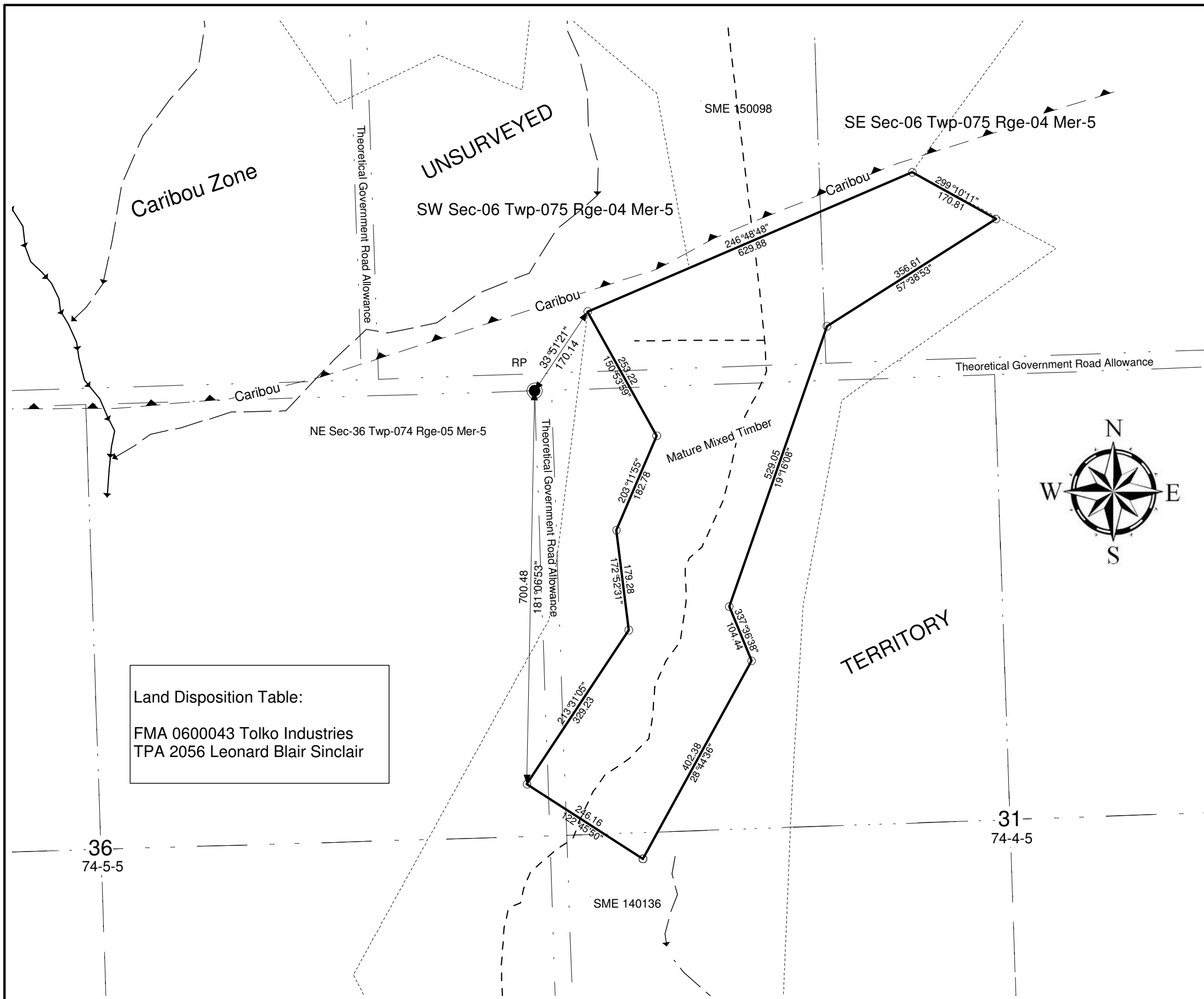
PLAN SCALE (Meters)



**UPLAND ENVIRONMENTAL LTD.**

Drawn: June 9, 2015

Drawn By: Normand Menard, RPFT, C-Tech



**Land Disposition Table:**

FMA 0600043 Tolko Industries  
TPA 2056 Leonard Blair Sinclair