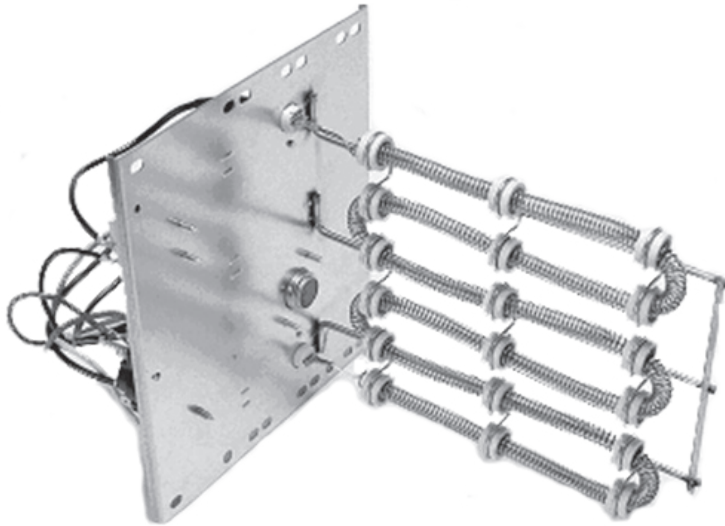


HKR / HKA / HKP / HKS

ELECTRIC HEAT KITS FOR AIR HANDLERS AND PACKAGED ELECTRIC UNITS



The Amana® brand HKR Electric Heat Kits are for use with Amana brand air handlers and modular blowers as well as packaged electric/heat pump units. These versatile heat kits are designed for easy installation in the field and cover a wide range of applications.

Standard Features

- Sequencers for better temperature control
- Multiple branch circuit capability
- Completely assembled and tested
- Control circuitry arranged to readily permit staging
- Factory-installed circuit breakers available on specific models (See Electrical Data)
- Fuse link secondary high-temperature limit control
- Plug-in wiring harness for ease of installation into air handler
- Rust-resistant nickel chromium heat elements
- ETL Listed

Contents

AVPTC	3
ARPT	4
ARPF	6
ARUF-SF with HKS Electric Heat	10
ARUF with HKR Electric Heat	12
ASPT	16
ASPF	18
MBVC	20
MBR	21
GPC**M	22
GPC**H	23
APH**M	25
GPH**M	26
GPH**H	28



* Complete warranty details are available from your local dealer or at www.amana-hac.com.

NOMENCLATURE

		HKR	*	-05	*	A			
		1	2	3	4,5	11			
Unit Type							Revisions		
HKR Air Handlers & Packaged Units							Engineering Revisions		
HKA Air Handlers									
HKP Packaged Units							Circuit Breaker		
							None Single- or 3-Phase Kit; No Circuit Breaker		
Phase							C Single-Phase Kit w/ Circuit Breaker		
None Single-Phase									
3 Three-Phase									
Heating Capacity @ 240 Volts									
5	4.75 kW	15	14.25 to 15.00 kW						
8	7.00 kW	20	19.00 to 19.60 kW						
10	9.50 kW								

		HKS	X	03	X	A	AA		
		1	2	3	4	5	6,7		
Unit Type							Revisions		
HKS Heat Kit for Air Handlers							Engineering Revisions		
Phase							Phase		
X No circuit breaker							A Single Phase 208 V		
C Circuit Breaker							B Single Phase 240 V		
							C Single Phase 208/240 V		
							D Three Phase 208 V		
							E Three Phase 240 V		
							F Three Phase 208/240 V		
							G Three Phase 460 V		
Heating Capacity @ 240 Volts							Cabinet Size (MAX)		
03	3.0 kW								
05	4.5 kW								
06	6.0 kW								
08	8.0 kW								
10	9.6 kW								
15	14.4 kW								
19	19.2 k@ wth 150F limit								
20	19.2 kW with 170F limit								
25	25.0 kW								
							C C Cabinet		
							D D Cabinet		
							X All Cabinet Sizes		

HEATING kW CORRECTION FACTOR

SUPPLY VOLTAGE	240	230	220	210	208
CORRECTION FACTOR	1.00	0.92	0.84	0.77	0.75

Multiply the 240-volt heating capacity by correction factors.



AIR HANDLER ELECTRICAL DATA — AVPTC

MODEL & HEAT KIT USAGE	CIRCUIT 1			CIRCUIT 2			SINGLE-POINT KIT	
	HEATER AMPS	MCA ¹	MOP ²	HEATER AMPS	MCA ¹	MOP ²	MCA ¹	MOP ²
AVPTC24B14A*	0.0/0.0	4.9/4.9	15/15	---	---	---	---	---
HKS*03XC*	10.8/12.5	18/21	20/25	---	---	---	---	---
HKS*05XC*	17.3/20.0	27/30	30/30	---	---	---	---	---
HKS*06XC*	21.7/25.0	32/36	35/35	---	---	---	---	---
HKS*08XC*	28.9/33.3	41/47	40/50	---	---	---	---	---
HKS*10XC*	34.7/40.0	48/55	50/60	---	---	---	---	---
HKSC15*##	34.7/40.0	48/55	50/60	17.3/20.0	22/25	25/25	70/80	70/80
AVPTC30C14A*	0.0/0.0	4.9/4.9	15/15	---	---	---	---	---
HKS*03XC*	10.8/12.5	18/21	20/25	---	---	---	---	---
HKS*05XC*	17.3/20.0	27/30	30/30	---	---	---	---	---
HKS*06XC*	21.7/25.0	32/36	35/35	---	---	---	---	---
HKS*08XC*	28.9/33.3	41/47	40/50	---	---	---	---	---
HKS*10XC*	34.7/40.0	48/55	50/60	---	---	---	---	---
HKSC15*##	34.7/40.0	48/55	50/60	17.3/20.0	22/25	25/25	70/80	70/80
AVPTC36C14A*	0.0/0.0	6.5/6.5	15/15	---	---	---	---	---
HKS*03XC*	10.8/12.5	20/22	20/25	---	---	---	---	---
HKS*05XC*	17.3/20.0	28/32	30/35	---	---	---	---	---
HKS*06XC*	21.7/25.0	34/38	35/40	---	---	---	---	---
HKS*08XC*	28.9/33.3	43/48	45/50	---	---	---	---	---
HKS*10XC*	34.7/40.0	50/57	50/60	---	---	---	---	---
HKSC15*##	34.7/40.0	50/57	50/60	17.3/20.0	22/25	25/25	72/82	80/90
HKSC19C##	34.7/40.0	50/57	50/60	34.7/40	43/50	45/50	93/107	100/110
HKSC15XF*	0.0/0.0	6.5/6.5	15/15	30.0/34.6	38/43	40/45	---	---
HKSC20XF*	0.0/0.0	6.5/6.5	15/15	37.5/43.3	47/54	50/60	---	---
AVPTC42D14A*	0.0/0.0	6.5/6.5	15/15	---	---	---	---	---
HKS*03XC*	10.8/12.5	20/22	20/25	---	---	---	---	---
HKS*05XC*	17.3/20.0	28/32	30/35	---	---	---	---	---
HKS*06XC*	21.7/25.0	34/38	35/40	---	---	---	---	---
HKS*08XC*	28.9/33.3	43/48	45/50	---	---	---	---	---
HKS*10XC*	34.7/40.0	50/57	50/60	---	---	---	---	---
HKSC15*##	34.7/40.0	50/57	50/60	17.3/20.0	22/25	25/25	72/82	80/90
HKSC20D##	34.7/40.0	50/57	50/60	34.7/40	43/50	45/50	93/107	100/110
HKSC15XF*	0.0/0.0	6.5/6.5	15/15	30.0/34.6	38/43	40/45	---	---
HKSC20XF*	0.0/0.0	6.5/6.5	15/15	37.5/43.3	47/54	50/60	---	---
AVPTC48D14A*	0.0/0.0	6.5/6.5	15/15	---	---	---	---	---
HKS*03XC*	10.8/12.5	20/22	20/25	---	---	---	---	---
HKS*05XC*	17.3/20.0	28/32	30/35	---	---	---	---	---
HKS*06XC*	21.7/25.0	34/38	35/40	---	---	---	---	---
HKS*08XC*	28.9/33.3	43/48	45/50	---	---	---	---	---
HKS*10XC*	34.7/40.0	50/57	50/60	---	---	---	---	---
HKSC15*##	34.7/40.0	50/57	50/60	17.3/20.0	22/25	25/25	72/82	80/90
HKSC20D##	34.7/40.0	50/57	50/60	34.7/40	43/50	45/50	93/107	100/110
HKSC15XF*	0.0/0.0	6.5/6.5	15/15	30.0/34.6	38/43	40/45	---	---
HKSC20XF*	0.0/0.0	6.5/6.5	15/15	37.5/43.3	47/54	50/60	---	---
AVPTC60D14A*	0.0/0.0	8.6/8.6	15/15	---	---	---	---	---
HKS*03XC*	10.8/12.5	22/24	30/30	---	---	---	---	---
HKS*05XC*	17.3/20.0	30/34	35/40	---	---	---	---	---
HKS*06XC*	21.7/25.0	36/40	40/45	---	---	---	---	---
HKS*08XC*	28.9/33.3	45/50	45/50	---	---	---	---	---
HKS*10XC*	34.7/40.0	52/59	50/60	---	---	---	---	---
HKSC15*##	34.7/40.0	52/59	50/60	17.3/20	22/25	25/25	74/84	80/90
HKSC20D##	34.7/40.0	52/59	50/60	34.7/40.0	43/50	45/50	95/109	100/110
HKSC15XF*	0.0/0.0	8.6/8.6	15/15	30.0/34.6	38/43	40/45	---	---
HKSC20XF*	0.0/0.0	8.6/8.6	15/15	37.5/43.3	47/54	50/60	---	---
HKSC25DC*	34.7/40.0	52/59	60/60	52.0/60.0	65/75	70/80	117/134	125/150

¹ Minimum Circuit Ampacity @ 208 / 240 V ² Maximum Overcurrent Protection Device @ 208 / 240V [^] Heat Kit requires three-phase power supply
 * Revision level that may or may not be designated C Circuit breaker option --- indicates Not Required

NOTES

- All HKR ampacities noted above include air handler motor amps, excluding three-phase models.
- HKA meets the new UL1995 requirements for 15 and 20KW heaters; HKR-21C* is Obsolete; no replacement

AIR HANDLER ELECTRICAL DATA — ARPT

MODEL & HEAT KIT USAGE	CIRCUIT 1			CIRCUIT 2			SINGLE-POINT KIT	
	HEATER AMPS	MCA ¹	MOP ²	HEATER AMPS	MCA ¹	MOP ²	MCA ¹	MOP ²
ARPT18B14AA	0/0	2.4/2.4	15/15	---	---	---	---	---
HKS*03XC*	10.8/12.5	16/18	20/20	---	---	---	---	---
HKS*05XC*	17.3/20	24/27	25/30	---	---	---	---	---
HKS*06XC*	21.7/25	29/34	30/35	---	---	---	---	---
HKS*08XC*	28.9/33.3	34/39	40/45	---	---	---	---	---
HKS*10XC*	34.7/40	45/52	50/60	---	---	---	---	---
ARPT24B14AA	0/0	2.4/2.4	15/15	---	---	---	---	---
HKS*03XC*	10.8/12.5	16/18	20/20	---	---	---	---	---
HKS*05XC*	17.3/20	24/28	25/30	---	---	---	---	---
HKS*06XC*	21.7/25	30/34	30/35	---	---	---	---	---
HKS*08XC*	28.9/33.3	39/44	40/45	---	---	---	---	---
HKS*10XC*	34.7/40	46/53	50/60	---	---	---	---	---
HKSC15*##	34.7/40	46/53	50/60	17.3/20	22/25	25/30	68/78	70/80
ARPT30B14AA	0/0	2.4/2.4	15/15	---	---	---	---	---
HKS*03XC*	10.8/12.5	16/18	20/20	---	---	---	---	---
HKS*05XC*	17.3/20	24/28	25/30	---	---	---	---	---
HKS*06XC*	21.7/25	30/34	30/35	---	---	---	---	---
HKS*08XC*	28.9/33.3	39/44	40/45	---	---	---	---	---
HKS*10XC*	34.7/40	46/53	50/60	---	---	---	---	---
HKSC15*##	34.7/40	46/53	50/60	17.3/20	22/25	25/30	68/78	70/80
ARPT36C14AA	0/0	3.8/3.8	15/15	---	---	---	---	---
HKS*03XC*	10.8/12.5	18/20	20/20	---	---	---	---	---
HKS*05XC*	17.3/20	26/29	30/30	---	---	---	---	---
HKS*06XC*	21.7/25	32/36	35/40	---	---	---	---	---
HKS*08XC*	28.9/33.3	41/46	45/50	---	---	---	---	---
HKS*10XC*	34.7/40	48/54	50/60	---	---	---	---	---
HKSC15*##	34.7/40	48/54	50/60	17.3/20	22/25	25/30	70/80	70/80
HKSC19C##	34.7/40	48/54	50/60	34.7/40	44/50	45/60	91/105	100/110
HKSC15XF*	0/0	3.8/3.8	15/15	30/34.6	38/44	40/50	---	---
HKSC20XF*	0/0	3.8/3.8	15/15	37/43	47/54	50/60	---	---
ARPT36D14AA	0/0	3.8/3.8	15/15	---	---	---	---	---
HKS*03XC*	10.8/12.5	18/20	20/20	---	---	---	---	---
HKS*05XC*	17.3/20	26/29	30/30	---	---	---	---	---
HKS*06XC*	21.7/25	31/35	35/40	---	---	---	---	---
HKS*08XC*	28.9/33.3	40/46	40/50	---	---	---	---	---
HKS*10XC*	34.7/40	48/54	50/60	---	---	---	---	---
HKSC15*##	34.7/40	48/54	50/60	17.3/20	22/25	25/30	70/80	70/80
HKSC20D##	34.7/40	48/54	50/60	34.7/40	44/50	45/60	91/105	100/110
HKSC15XF*	0/0	3.8/3.8	15/15	30/34.6	38/44	40/50	---	---
HKSC20XF*	0/0	3.8/3.8	15/15	37/43	47/54	50/60	---	---

See Notes on the following page.

AIR HANDLER ELECTRICAL DATA — ARPT (CONT.)

MODEL & HEAT KIT USAGE	CIRCUIT 1			CIRCUIT 2			SINGLE-POINT KIT	
	HEATER AMPS	MCA ¹	MOP ²	HEATER AMPS	MCA ¹	MOP ²	MCA ¹	MOP ²
ARPT42D14AA	0/0	4.4/4.4	15/15	---	---	---	---	---
HKS*03XC*	10.8/12.5	18/20	20/25	---	---	---	---	---
HKS*05XC*	17.3/20	26/30	30/30	---	---	---	---	---
HKS*06XC*	21.7/25	32/36	35/40	---	---	---	---	---
HKS*08XC*	28.9/33.3	41/46	45/50	---	---	---	---	---
HKS*10XC*	34.7/40	48/55	50/60	---	---	---	---	---
HKSC15*##	34.7/40	48/55	50/60	17.3/20	22/25	25/30	71/81	80/90
HKSC20D##	34.7/40	48/55	50/60	34.7/40	44/50	45/60	92/106	100/110
HKSC15XF*	0/0	4.4/ 4.4	15/15	30/34.6	38/44	40/50	---	---
HKSC20XF*	0/0	4.4/ 4.4	15/15	37/43	47/54	50/60	---	---
ARPT48D14AA	0/0	4.4/4.4	15/15	---	---	---	---	---
HKS*03XC*	10.8/12.5	18/20	20/25	---	---	---	---	---
HKS*05XC*	17.3/20	26/30	30/30	---	---	---	---	---
HKS*06XC*	21.7/25	32/36	35/40	---	---	---	---	---
HKS*08XC*	28.9/33.3	41/46	45/50	---	---	---	---	---
HKS*10XC*	34.7/40	48/55	50/60	---	---	---	---	---
HKSC15*##	34.7/40	48/55	50/60	17.3/20	22/25	25/30	71/81	80/90
HKSC20D##	34.7/40	48/55	50/60	34.7/40	44/50	45/60	92/106	100/110
HKSC15XF*	0/0	4.4/ 4.4	15/15	30/34.6	38/44	40/50	---	---
HKSC20XF*	0/0	4.4/ 4.4	15/15	37/43	47/54	50/60	---	---
ARPT60D14AA	0/0	5.8/5.8	15/15	---	---	---	---	---
HKS*03XC*	10.8/12.5	20/22	20/25	---	---	---	---	---
HKS*05XC*	17.3/20	28/31	30/35	---	---	---	---	---
HKS*06XC*	21.7/25	33/37	35/40	---	---	---	---	---
HKS*08XC*	28.9/33.3	42/48	45/50	---	---	---	---	---
HKS*10XC*	34.7/40	50/56	50/60	---	---	---	---	---
HKSC15*##	34.7/40	50/56	50/60	17.3/20	22/25	25/30	72/82	80/90
HKSC20D##	34.7/40	50/56	50/60	34.7/40	44/50	45/60	94/107	100/110
HKSC15XF*	0/0	5.8/5.8	15/15	30/34.6	38/44	40/50	---	---
HKSC20XF*	0/0	5.8/5.8	15/15	37/43	47/54	50/60	---	---
HKSC25DC*	34.7/40	50/56	50/60	52/60	65/75	70/80	116/133	125/150

¹ Minimum Circuit Ampacity (Heater Amps + Motor Amps) X 1.25

* Revision level that may or may not be designated

² Maximum Overcurrent Protection = 2.25 X Motor Amps + Heater Amps

--- indicates Not Required

AIR HANDLER ELECTRICAL DATA — ARPF

AIR HANDLER MODEL	MOTOR		VOLTS-HERTZ-PHASE	HEATER KIT	CIRCUIT 1			CIRCUIT 2		
	AMP+	HP			HEATER AMPS	MCA ¹	MOP ²	HEATER AMPS	MCA ¹	MOP ²
ARPF182416AA ARPF182416BA	1.7	1/3	208/240-60-1	-----	0/0	2.1/2.1	15/15	----	----	----
				HKR-03*	10.8/12.5	16/18	20/20	----	----	----
				HKR-05*/-05C*	17.1/19.8	24/27	30/30	----	----	----
				HKR-06*	21.6/25.0	30/34	40/40	----	----	----
				HKR-08*/-08C*	25.2/29.1	34/39	40/40	----	----	----
				HKR-10*/-10C*	34.3/39.6	45/52	60/60	----	----	----
ARPF182416CA	1.9	1/3	208/240-60-1	-----	0/0	2.4/2.4	15/15	----	----	----
				HKR-03*	10.8/12.5	16/18	20/20	----	----	----
				HKR-05*/-05C*	17.2/19.8	24/27	25/30	----	----	----
				HKR-06*	21.7/25.0	29/34	30/35	----	----	----
				HKR-08*/-08C*	25.3/29.2	34/39	35/40	----	----	----
				HKR-10*/-10C*	34.3/39.6	45/52	50/60	----	----	----
ARPF193116AA ARPF193116BA	1.48	1/4	208/240-60-1	-----	0/0	1.9/1.9	15/15	----	----	----
				HKR-03*	10.8/12.5	15/17	20/20	----	----	----
				HKR-05*/-05C*	17.1/19.8	23/27	30/30	----	----	----
				HKR-06*	21.6/25.0	29/33	40/40	----	----	----
				HKR-08*/-08C*	25.2/29.1	33/38	40/40	----	----	----
				HKR-10*/-10C*	34.3/39.6	45/51	60/60	----	----	----
ARPF193116CA	1.48	1/4	208/240-60-1	-----	0/0	1.9/1.9	15/15	----	----	----
				HKR-03*	10.8/12.5	15/17	20/20	----	----	----
				HKR-05*/-05C*	17.2/19.8	23/27	25/30	----	----	----
				HKR-06*	21.7/25.0	29/33	30/35	----	----	----
				HKR-08*/-08C*	25.3/29.2	33/38	35/40	----	----	----
				HKR-10*/-10C*	34.3/39.6	45/51	45/60	----	----	----
ARPF303016AA ARPF303016BA	2.64	1/3	208/240-60-1	-----	0/0	3.3/3.3	15/15	----	----	----
				HKR-03*	10.8/12.5	17/19	20/20	----	----	----
				HKR-05*/-05C*	17.1/19.8	25/28	30/30	----	----	----
				HKR-06*	21.6/25.0	30/35	40/40	----	----	----
				HKR-08*/-08C*	25.2/29.1	35/40	40/40	----	----	----
				HKR-10*/-10C*	34.3/39.6	46/53	60/60	----	----	----
				HKR-15C*	34.3/39.6	46/53	60/60	17.1/19.8	22/25	30/30
				HKR-20C*	34.3/39.6	46/53	60/60	34.3/39.6	43/49	60/60
				HKR-21C*	37.9/43.8	51/58	60/60	37.9/43.8	48/55	60/60
				^HKR3-15*	0/0	3.3/3.3	15/15	31.2/36.1	39/45	60/60
^HKR3-20*	0/0	3.3/3.3	15/15	40.6/46.9	51/59	60/60				

¹ Minimum Circuit Ampacity @ 208 / 240 V

² Maximum Overcurrent Protection Device @ 208 / 240 V

* Revision level that may or may not be designated

C Circuit breaker option

^ Heat Kit requires three-phase power supply

Note: All HKR ampacities noted above include air handler motor amps, excluding three-phase models.

AIR HANDLER ELECTRICAL DATA — ARPF (CONT.)

AIR HANDLER MODEL	MOTOR		VOLTS-HERTZ-PHASE	HEATER KIT	CIRCUIT 1			CIRCUIT 2		
	AMP+	HP			HEATER AMPS	MCA ¹	MOP ²	HEATER AMPS	MCA ¹	MOP ²
ARPF303016CA	2.64	1/3	208/240-60-1	-----	0/0	3.3/3.3	15/15	----	----	----
				HKR-03*	10.8/12.5	17/19	20/20	----	----	----
				HKR-05*/-05C*	17.2/19.8	25/28	25/30	----	----	----
				HKR-06*	21.7/25.0	30/35	35/35	----	----	----
				HKR-08*/-08C*	25.3/29.2	35/40	35/40	----	----	----
				HKR-10*/-10C*	34.3/39.6	46/53	50/60	----	----	----
				15 HKR-15C*	34.3/39.6	46/53	50/60	17.2/19.8	21/25	25/25
				16 HKR-20C*	34.3/39.6	46/53	50/60	34.3/39.6	43/49	45/50
				17 HKR-21C*	37.9/43.8	51/58	60/60	37.9/43.8	47/55	50/60
				18 ^HKR3-15*	0/0	3.3/3.3	15/15	31.3/36.1	39/45	40/50
19 ^HKR3-20*	0/0	3.3/3.3	15/15	40.7/46.9	51/59	60/60				
ARPF363616AA ARPF363616BA	2.64	1/3	208/240-60-1	-----	0/0	3.3/3.3	15/15	----	----	----
				HKR-03*	10.8/12.5	17/19	20/20	----	----	----
				HKR-05*/-05C*	17.1/19.8	25/28	30/30	----	----	----
				HKR-06*	21.6/25.0	30/35	40/40	----	----	----
				HKR-08*/-08C*	25.2/29.1	35/40	40/40	----	----	----
				HKR-10*/-10C*	34.3/39.6	46/53	60/60	----	----	----
				HKR-15C*	34.3/39.6	46/53	60/60	17.1/19.8	22/25	30/30
				^HKR3-15*	0/0	3.3/3.3	15/15	31.2/36.1	39/45	60/60
ARPF363616CA	2.64	1/3	208/240-60-1	-----	0/0	3.3/3.3	15/15	----	----	----
				HKR-03*	10.8/12.5	17/19	20/20	----	----	----
				HKR-05*/-05C*	17.2/19.8	25/28	25/30	----	----	----
				HKR-06*	21.7/25.0	30/35	35/35	----	----	----
				HKR-08*/-08C*	25.3/29.2	35/40	35/40	----	----	----
				HKR-10*/-10C*	34.3/39.6	46/53	50/60	----	----	----
				HKR-15C*	34.3/39.6	46/53	50/60	17.2/19.8	21/25	25/25
				^HKR3-15*	0/0	3.3/3.3	15/15	31.3/36.1	39/45	40/50
ARPF364216AA ARPF364216AB ARPF364216AC ARPF364216BA	2.95	1/2	208/240-60-1	-----	0/0	3.7/3.7	15/15	----	----	----
				HKR-03*	10.8/12.5	17/19	20/20	----	----	----
				HKR-05*/-05C*	17.1/19.8	25/28	30/30	----	----	----
				HKR-06*	21.6/25.0	31/35	40/40	----	----	----
				HKR-08*/-08C*	25.2/29.1	35/40	40/40	----	----	----
				HKR-10*/-10C*	34.3/39.6	47/53	60/60	----	----	----
				HKR-15C*	34.3/39.6	47/53	60/60	17.1/19.8	22/25	30/30
				HKR-20C*	34.3/39.6	47/53	60/60	34.3/39.6	43/49	60/60
				HKR-21C*	37.9/43.8	51/58	60/60	37.9/43.8	48/55	60/60
				^HKR3-15*	0/0	3.7/3.7	15/15	31.2/36.1	39/45	60/60
^HKR3-20*	0/0	3.7/3.7	15/15	40.6/46.9	51/59	60/60				

¹ Minimum Circuit Ampacity @ 208 / 240 V

² Maximum Overcurrent Protection Device @ 208 / 240 V

* Revision level that may or may not be designated

C Circuit breaker option

^ Heat Kit requires three-phase power supply

Note: All HKR ampacities noted above include air handler motor amps, excluding three-phase models.

AIR HANDLER ELECTRICAL DATA — ARPF (CONT.)

AIR HANDLER MODEL	MOTOR		VOLTS-HERTZ-PHASE	HEATER KIT	CIRCUIT 1			CIRCUIT 2		
	AMP+	HP			HEATER AMPS	MCA ¹	MOP ²	HEATER AMPS	MCA ¹	MOP ²
ARPF364216CA	3.12	1/2	208/240-60-1	-----	0/0	3.9/3.9	15/15	----	----	----
				HKR-03*	10.8/12.5	17/20	20/20	----	----	----
				HKR-05*/-05C*	17.2/19.8	25/29	30/30	----	----	----
				HKR-06*	21.7/25.0	31/35	35/40	----	----	----
				HKR-08*/-08C*	25.3/29.2	36/40	40/45	----	----	----
				HKR-10*/-10C*	34.3/39.6	47/53	50/60	----	----	----
				HKR-15C*	34.3/39.6	47/53	50/60	17.2/19.8	21/25	25/25
				HKR-20C*	34.3/39.6	47/53	50/60	34.3/39.6	43/49	45/50
				HKR-21C*	37.9/43.8	51/59	60/60	37.9/43.8	47/55	50/60
				^HKR3-15*	0/0	3.9/3.9	15/15	31.3/36.1	39/45	40/50
^HKR3-20*	0/0	3.9/3.9	15/15	40.7/46.9	51/59	60/60				
ARPF374316AA ARPF374316BA	3.39	1/2	208/240-60-1	-----	0/0	4.2/4.2	15/15	----	----	----
				HKR-03*	10.8/12.5	18/20	20/20	----	----	----
				HKR-05*/-05C*	17.1/19.8	26/29	30/30	----	----	----
				HKR-06*	21.6/25.0	31/35	40/40	----	----	----
				HKR-08*/-08C*	25.2/29.1	36/41	40/40	----	----	----
				HKR-10*/-10C*	34.3/39.6	47/54	60/60	----	----	----
				HKR-15C*	34.3/39.6	47/54	60/60	17.1/19.8	22/25	30/30
				HKR-20C*	34.3/39.6	47/54	60/60	34.3/39.6	43/49	60/60
				HKR-21C*	37.9/43.8	52/59	60/60	37.9/43.8	48/55	60/60
				^HKR3-15*	0/0	4.2/4.2	15/15	31.2/36.1	39/45	60/60
^HKR3-20*	0/0	4.2/4.2	15/15	40.6/46.9	51/59	60/60				
ARPF374316CA	3.39	1/2	208/240-60-1	-----	0/0	4.2/4.2	15/15	----	----	----
				HKR-03*	10.8/12.5	18/20	20/20	----	----	----
				HKR-05*/-05C*	17.2/19.8	26/29	30/30	----	----	----
				HKR-06*	21.7/25.0	31/35	35/40	----	----	----
				HKR-08*/-08C*	25.3/29.2	36/41	40/45	----	----	----
				HKR-10*/-10C*	34.3/39.6	47/54	50/60	----	----	----
				HKR-15C*	34.3/39.6	47/54	50/60	17.2/19.8	21/25	25/25
				HKR-20C*	34.3/39.6	47/54	50/60	34.3/39.6	43/49	45/50
				HKR-21C*	37.9/43.8	52/59	60/60	37.9/43.8	47/55	50/60
				^HKR3-15*	0/0	4.2/4.2	15/15	31.3/36.1	39/45	40/50
^HKR3-20*	0/0	4.2/4.2	15/15	40.7/46.9	51/59	60/60				
ARPF486016AA ARPF486016AB ARPF486016BA	4.3	3/4	208/240-60-1	-----	0/0	5.4/5.4	15/15	----	----	----
				HKR-03*	10.8/12.5	19/21	20/20	----	----	----
				HKR-05*/-05C*	17.1/19.8	27/30	30/30	----	----	----
				HKR-06*	21.6/25.0	32/37	40/40	----	----	----
				HKR-08*/-08C*	25.2/29.1	37/39	40/40	----	----	----
				HKR-10*/-10C*	34.3/39.6	48/55	60/60	----	----	----
				HKR-15C*	34.3/39.6	48/55	60/60	17.1/19.8	22/25	30/30
				HKR-20C*	34.3/39.6	48/55	60/60	34.3/39.6	43/49	60/60
				HKR-21C*	37.9/43.8	53/59	60/60	37.9/43.8	48/55	60/60
				^HKR3-15*	0/0	5.4/5.4	15/15	31.2/36.1	39/45	60/60
^HKR3-20*	0/0	5.4/5.4	15/15	40.6/46.9	51/59	60/60				

See Notes on the following page.

AIR HANDLER ELECTRICAL DATA — ARPF (CONT.)

AIR HANDLER MODEL	MOTOR		VOLTS-HERTZ-PHASE	HEATER KIT	CIRCUIT 1			CIRCUIT 2		
	AMP+	HP			HEATER AMPS	MCA ¹	MOP ²	HEATER AMPS	MCA ¹	MOP ²
ARPF486016CA	4.06	3/4	208/240-60-1	-----	0/0	5.1/5.1	15/15	----	----	----
				HKR-03*	10.8/12.5	19/21	20/25	----	----	----
				HKR-05*/-05C*	17.2/19.8	27/30	30/30	----	----	----
				HKR-06*	21.7/25	32/36	35/40	----	----	----
				HKR-08*/-08C*	25.3/29.2	37/42	40/45	----	----	----
				HKR-10*/-10C*	34.3/39.6	48/55	50/60	----	----	----
				HKR-15C*	34.3/39.6	48/55	50/60	17.2/19.8	21/25	25/25
				HKR-20C*	34.3/39.6	48/55	50/60	34.3/39.6	43/49	45/50
				HKR-21C*	37.9/43.8	52/60	60/60	37.9/43.8	47/55	50/60
				^HKR3-15*	0/0	5.1/5.1	15/15	31.3/36.1	39/45	40/50
^HKR3-20*	0/0	5.1/5.1	15/15	40.7/46.9	51/59	60/60				
ARPF496116AA	4.3	3/4	208/240-60-1	-----	0/0	5.4/5.4	15/15	----	----	----
				HKR-03*	10.8/12.5	19/21	20/20	----	----	----
				HKR-05*/-05C*	17.1/19.8	27/30	30/30	----	----	----
				HKR-06*	21.6/25.0	32/37	40/40	----	----	----
				HKR-08*/-08C*	25.2/29.1	37/39	40/40	----	----	----
				HKR-10*/-10C*	34.3/39.6	48/55	60/60	----	----	----
				HKR-15C*	34.3/39.6	48/55	60/60	17.1/19.8	22/25	30/30
				HKR-20C*	34.3/39.6	48/55	60/60	34.3/39.6	43/49	60/60
				HKR-21C*	37.9/43.8	53/59	60/60	37.9/43.8	48/55	60/60
				^HKR3-15*	0/0	5.4/5.4	15/15	31.2/36.1	39/45	60/60
^HKR3-20*	0/0	5.4/5.4	15/15	40.6/46.9	51/59	60/60				
ARPF496116CA	4.06	3/4	208/240-60-1	-----	0/0	5.1/5.1	15/15	----	----	----
				HKR-03*	10.8/12.5	19/21	20/25	----	----	----
				HKR-05*/-05C*	17.2/19.8	27/30	30/30	----	----	----
				HKR-06*	21.7/25.0	32/36	35/40	----	----	----
				HKR-08*/-08C*	25.3/29.2	37/42	40/45	----	----	----
				HKR-10*/-10C*	34.3/39.6	48/55	50/60	----	----	----
				HKR-15C*	34.3/39.6	48/55	50/60	17.2/19.8	21/25	25/25
				HKR-20C*	34.3/39.6	48/55	50/60	34.3/39.6	43/49	45/50
				HKR-21C*	37.9/43.8	52/60	60/60	37.9/43.8	47/55	50/60
				HKR3-15*	0/0	5.1/5.1	15/15	31.3/36.1	39/45	40/50
HKR3-20*	0/0	5.1/5.1	15/15	40.7/46.9	51/59	60/60				

¹ Minimum Circuit Ampacity @ 208 / 240 V

* Revision level that may or may not be designated

^ Heat Kit requires three-phase power supply

² Maximum Overcurrent Protection Device @ 208 / 240 V

C Circuit breaker option

Note: All HKR ampacities noted above include air handler motor amps, excluding three-phase models.

AIR HANDLER ELECTRICAL DATA — ARUF-SF WITH HKS ELECTRIC HEAT

MODEL & HEAT KIT USAGE	CIRCUIT 1			CIRCUIT 2			SINGLE-POINT KIT	
	HEATER AMPS	MCA ¹	MOP ²	HEATER AMPS	MCA ¹	MOP ²	MCA ¹	MOP ²
ARUF18B14AA	0/0	2.4/2.4	15/15	---	---	---	---	---
HKS*03XC*	10.8/12.5	16/18	20/20	---	---	---	---	---
HKS*05XC*	17.3/20	24/28	25/30	---	---	---	---	---
HKS*06XC*	21.7/25	30/34	30/35	---	---	---	---	---
HKS*08XC*	28.9/33.3	39/44	40/45	---	---	---	---	---
HKS*10XC*	34.7/40	46/53	50/60	---	---	---	---	---
ARUF24B14AA	0/0	2.4/2.4	15/15	---	---	---	---	---
HKS*03XC*	10.8/12.5	16/18	20/20	---	---	---	---	---
HKS*05XC*	17.3/20	24/28	25/30	---	---	---	---	---
HKS*06XC*	21.7/25	30/34	30/35	---	---	---	---	---
HKS*08XC*	28.9/33.3	39/44	40/45	---	---	---	---	---
HKS*10XC*	34.7/40	46/53	50/60	---	---	---	---	---
ARUF30B14AA	0/0	2.4/2.4	15/15	---	---	---	---	---
HKS*03XC*	10.8/12.5	16/18	20/20	---	---	---	---	---
HKS*05XC*	17.3/20	24/28	25/30	---	---	---	---	---
HKS*06XC*	21.7/25	30/34	30/35	---	---	---	---	---
HKS*08XC*	28.9/33.3	39/44	40/45	---	---	---	---	---
HKS*10XC*	34.7/40	46/53	50/60	---	---	---	---	---
HKSC15*##	34.7/40	46/53	50/60	17.3/20	22/25	25/30	68/78	70/80
ARUF30C14BA	0/0	3.8/3.8	15/15	---	---	---	---	---
HKS*03XC*	10.8/12.5	18/20	20/20	---	---	---	---	---
HKS*05XC*	17.3/20	26/29	30/30	---	---	---	---	---
HKS*06XC*	21.7/25	31/35	35/40	---	---	---	---	---
HKS*08XC*	28.9/33.3	40/46	40/50	---	---	---	---	---
HKS*10XC*	34.7/40	48/54	50/60	---	---	---	---	---
HKSC15*##	34.7/40	48/54	50/60	17.3/20	22/25	25/30	70/80	70/80
HKSC19C##	34.7/40	48/54	50/60	34.7/40	44/50	45/60	91/105	100/110
HKSC15XF*	0/0	3.8/3.8	15/15	30/34.6	38/44	40/50	---	---
HKSC20XF*	0/0	3.8/3.8	15/15	37/43	47/54	50/60	---	---
ARUF36C14AA	0/0	3.8/3.8	15/15	---	---	---	---	---
HKS*03XC*	10.8/12.5	18/20	20/20	---	---	---	---	---
HKS*05XC*	17.3/20	26/29	30/30	---	---	---	---	---
HKS*06XC*	21.7/25	31/35	35/40	---	---	---	---	---
HKS*08XC*	28.9/33.3	40/46	40/50	---	---	---	---	---
HKS*10XC*	34.7/40	48/54	50/60	---	---	---	---	---
HKSC15*##	34.7/40	48/54	50/60	17.3/20	22/25	25/30	70/80	70/80
HKSC19C##	34.7/40	48/54	50/60	34.7/40	44/50	45/60	91/105	100/110
HKSC15XF*	0/0	3.8/3.8	15/15	30/34.6	38/44	40/50	---	---
HKSC20XF*	0/0	3.8/3.8	15/15	37/43	47/54	50/60	---	---

See Notes on the following page.

AIR HANDLER ELECTRICAL DATA — ARUF-SF WITH HKS ELECTRIC HEAT (CONT.)

MODEL & HEAT KIT USAGE	CIRCUIT 1			CIRCUIT 2			SINGLE-POINT KIT	
	HEATER AMPS	MCA ¹	MOP ²	HEATER AMPS	MCA ¹	MOP ²	MCA ¹	MOP ²
ARUF42C14AA	0/0	3.8/3.8	15/15	---	---	---	---	---
HKS*03XC*	10.8/12.5	18/20	20/20	---	---	---	---	---
HKS*05XC*	17.3/20	26/29	30/30	---	---	---	---	---
HKS*06XC*	21.7/25	32/36	35/40	---	---	---	---	---
HKS*08XC*	28.9/33.3	41/46	45/50	---	---	---	---	---
HKS*10XC*	34.7/40	48/54	50/60	---	---	---	---	---
HKSC15*##	34.7/40	48/54	50/60	17.3/20	22/25	25/30	70/80	70/80
HKSC19C##	34.7/40	48/54	50/60	34.7/40	44/50	45/60	92/105	100/110
HKSC15XF*	0/0	3.8/3.8	15/15	30/34.6	38/44	40/50	---	---
HKSC20XF*	0/0	3.8/3.8	15/15	37/43	47/54	50/60	---	---
ARUF48D14AA	0/0	4.4/ 4.4	15/15	---	---	---	---	---
HKS*03XC*	10.8/12.5	18/20	20/25	---	---	---	---	---
HKS*05XC*	17.3/20	26/30	30/30	---	---	---	---	---
HKS*06XC*	21.7/25	32/36	35/40	---	---	---	---	---
HKS*08XC*	28.9/33.3	41/46	45/50	---	---	---	---	---
HKS*10XC*	34.7/40	48/55	50/60	---	---	---	---	---
HKSC15*##	34.7/40	48/55	50/60	17.3/20	22/25	25/30	71/81	80/90
HKSC20D##	34.7/40	48/55	50/60	34.7/40	44/50	45/60	92/106	100/110
HKSC15XF*	0/0	4.4/ 4.4	15/15	30/34.6	38/44	40/50	---	---
HKSC20XF*	0/0	4.4/ 4.4	15/15	37/43	47/54	50/60	---	---
ARUF60D14AA	0/0	5.8/5.8	15/15	---	---	---	---	---
HKS*03XC*	10.8/12.5	20/22	20/25	---	---	---	---	---
HKS*05XC*	17.3/20	28/31	30/35	---	---	---	---	---
HKS*06XC*	21.7/25	33/37	35/40	---	---	---	---	---
HKS*08XC*	28.9/33.3	42/48	45/50	---	---	---	---	---
HKS*10XC*	34.7/40	50/56	50/60	---	---	---	---	---
HKSC15*##	34.7/40	50/56	50/60	17.3/20	22/25	25/30	72/82	80/90
HKSC20D##	34.7/40	50/56	50/60	34.7/40	44/50	45/60	94/107	100/110
HKSC15XF*	0/0	5.8/5.8	15/15	30/34.6	38/44	40/50	---	---
HKSC20XF*	0/0	5.8/5.8	15/15	37/43	47/54	50/60	---	---
HKSC25DC*	34.7/40	50/56	50/60	52/60	65/75	70/80	116/133	125/150

¹ Minimum Circuit Ampacity (Heater Amps + Motor Amps) X 1.25

* Revision level that may or may not be designated

² Maximum Overcurrent Protection = 2.25 X Motor Amps + Heater Amps

--- indicates Not Required

AIR HANDLER ELECTRICAL DATA — ARUF WITH HKR ELECTRIC HEAT

AIR HANDLER MODEL	MOTOR		VOLTS-HERTZ-PHASE	HEATER KIT	CIRCUIT 1			CIRCUIT 2		
	AMP+	HP			HEATER AMPS	MCA ¹	MOP ²	HEATER AMPS	MCA ¹	MOP ²
ARUF172916AA ARUF172916BA	1.7	1/3	208/240-60-1	-----	0/0	2.1/2.1	15/15	----	----	----
				HKR-03*	10.8/12.5	16/18	20/20	----	----	----
				HKR-05*/-05C*	17.1/19.8	24/27	30/30	----	----	----
				HKR-06*	21.6/25.0	30/34	40/40	----	----	----
				HKR-08*/-08C*	25.2/29.1	34/39	40/40	----	----	----
				HKR-10*/-10C*	34.3/39.6	45/52	60/60	----	----	----
				HKR-15C*	34.3/39.6	45/52	60/60	17.1/19.8	22/25	30/30
ARUF172916CA	1.9	1/3	208/240-60-1	-----	0/0	2.4/2.4	15/15	----	----	----
				HKR-03*	10.8/12.5	16/18	20/20	----	----	----
				HKR-05*/-05C*	17.2/19.8	24/27	25/30	----	----	----
				HKR-06*	21.7/25.0	29/34	30/35	----	----	----
				HKR-08*/-08C*	25.3/29.2	34/39	35/40	----	----	----
				HKR-10*/-10C*	34.3/39.6	45/52	50/60	----	----	----
				HKR-15C*	34.3/39.6	45/52	50/60	17.2/19.8	21/25	25/25
ARUF182416AA ARUF182416BA	1.7	1/3	208/240-60-1	-----	0/0	2.1/2.1	15/15	----	----	----
				HKR-03*	10.8/12.5	16/18	20/20	----	----	----
				HKR-05*/-05C*	17.1/19.8	24/27	30/30	----	----	----
				HKR-06*	21.6/25.0	30/34	40/40	----	----	----
				HKR-08*/-08C*	25.2/29.1	34/39	40/40	----	----	----
				HKR-10*/-10C*	34.3/39.6	45/52	60/60	----	----	----
				HKR-15C*	34.3/39.6	45/52	60/60	17.1/19.8	22/25	30/30
ARUF182416CA	1.9	1/3	208/240-60-1	-----	0/0	2.4/2.4	15/15	----	----	----
				HKR-03*	10.8/12.5	16/18	20/20	----	----	----
				HKR-05*/-05C*	17.2/19.8	24/27	25/30	----	----	----
				HKR-06*	21.7/25.0	29/34	30/35	----	----	----
				HKR-08*/-08C*	25.3/29.2	34/39	35/40	----	----	----
				HKR-10*/-10C*	34.3/39.6	45/52	50/60	----	----	----
				HKR-15C*	34.3/39.6	45/52	50/60	17.2/19.8	21/25	25/25
ARUF193116AA ARUF193116BA	1.48	1/4	208/240-60-1	-----	0/0	1.9/1.9	15/15	----	----	----
				HKR-03*	10.8/12.5	15/17	20/20	----	----	----
				HKR-05*/-05C*	17.1/19.8	23/27	30/30	----	----	----
				HKR-06*	21.6/25.0	29/33	40/40	----	----	----
				HKR-08*/-08C*	25.2/29.1	33/38	40/40	----	----	----
				HKR-10*/-10C*	34.3/39.6	45/51	60/60	----	----	----
				HKR-15C*	34.3/39.6	45/51	60/60	17.1/19.8	22/25	30/30
ARUF193116CA	1.48	1/4	208/240-60-1	-----	0/0	1.9/1.9	15/15	----	----	----
				HKR-03*	10.8/12.5	15/17	20/20	----	----	----
				HKR-05*/-05C*	17.2/19.8	23/27	25/30	----	----	----
				HKR-06*	21.7/25.0	29/33	30/35	----	----	----
				HKR-08*/-08C*	25.3/29.2	33/38	35/40	----	----	----
				HKR-10*/-10C*	34.3/39.6	45/51	45/60	----	----	----
				HKR-15C*	34.3/39.6	45/51	45/60	17.2/19.8	21/25	25/25
ARUF303016AA ARUF303016BA	2.64	1/3	208/240-60-1	-----	0/0	3.3/3.3	15/15	----	----	----
				HKR-03*	10.8/12.5	17/19	20/20	----	----	----
				HKR-05*/-05C*	17.1/19.8	25/28	30/30	----	----	----
				HKR-06*	21.6/25.0	30/35	40/40	----	----	----
				HKR-08*/-08C*	25.2/29.1	35/40	40/40	----	----	----

See Notes on Page 9.

AIR HANDLER ELECTRICAL DATA — ARUF WITH HKR ELECTRIC HEAT (CONT.)

AIR HANDLER MODEL	MOTOR		VOLTS-HERTZ-PHASE	HEATER KIT	CIRCUIT 1			CIRCUIT 2		
	AMP+	HP			HEATER AMPS	MCA ¹	MOP ²	HEATER AMPS	MCA ¹	MOP ²
ARUF303016AA ARUF303016BA	2.64	1/3	208/240-60-1	HKR-10*/-10C*	34.3/39.6	46/53	60/60	----	----	----
				HKR-15C*	34.3/39.6	46/53	60/60	17.1/19.8	22/25	30/30
				HKR-20C*	34.3/39.6	46/53	60/60	34.3/39.6	43/49	60/60
				HKR-21C*	37.9/43.8	51/58	60/60	37.9/43.8	48/55	60/60
				^HKR3-15*	0/0	3.3/3.3	15/15	31.2/36.1	39/45	60/60
				^HKR3-20*	0/0	3.3/3.3	15/15	40.6/46.9	51/59	60/60
ARUF303016CA	2.64	1/3	208/240-60-1	-----	0/0	3.3/3.3	15/15	----	----	----
				HKR-03*	10.8/12.5	17/19	20/20	----	----	----
				HKR-05*/-05C*	17.2/19.8	25/28	25/30	----	----	----
				HKR-06*	21.7/25.0	30/35	35/35	----	----	----
				HKR-08*/-08C*	25.3/29.2	35/40	35/40	----	----	----
				HKR-10*/-10C*	34.3/39.6	46/53	50/60	----	----	----
				HKR-15C*	34.3/39.6	46/53	50/60	17.2/19.8	21/25	25/25
				HKR-20C*	34.3/39.6	46/53	50/60	34.3/39.6	43/49	45/50
				HKR-21C*	37.9/43.8	51/58	60/60	37.9/43.8	47/55	50/60
				^HKR3-15*	0/0	3.3/3.3	15/15	31.3/36.1	39/45	40/50
ARUF363616AA	2.64	1/3	208/240-60-1	-----	0/0	3.3/3.3	15/15	----	----	----
				HKR-03*	10.8/12.5	17/19	20/20	----	----	----
				HKR-05*/-05C*	17.1/19.8	25/28	30/30	----	----	----
				HKR-06*	21.6/25.0	30/35	40/40	----	----	----
				HKR-08*/-08C*	25.2/29.1	35/40	40/40	----	----	----
				HKR-10*/-10C*	34.3/39.6	46/53	60/60	----	----	----
				HKR-15C*	34.3/39.6	46/53	60/60	17.1/19.8	22/25	30/30
				^HKR3-15*	0/0	3.3/3.3	15/15	31.2/36.1	39/45	60/60
ARUF363616BA	2.64	1/3	208/240-60-1	-----	0/0	3.3/3.3	15/15	----	----	----
				HKR-03*	10.8/12.5	17/19	20/20	----	----	----
				HKR-05*/-05C*	17.1/19.8	25/28	30/30	----	----	----
				HKR-06*	21.6/25.0	30/35	40/40	----	----	----
				HKR-08*/-08C*	25.2/29.1	35/40	40/40	----	----	----
				HKR-10*/-10C*	34.3/39.6	46/53	60/60	----	----	----
				HKR-15C*	34.3/39.6	46/53	60/60	17.1/19.8	22/25	30/30
				^HKR3-15*	0/0	3.3/3.3	15/15	31.2/36.1	39/45	60/60
ARUF363616CA	2.64	1/3	208/240-60-1	-----	0/0	3.3/3.3	15/15	----	----	----
				HKR-03*	10.8/12.5	17/19	20/20	----	----	----
				HKR-05*/-05C*	17.2/19.8	25/28	25/30	----	----	----
				HKR-06*	21.7/25.0	30/35	35/35	----	----	----
				HKR-08*/-08C*	25.3/29.2	35/40	35/40	----	----	----
				HKR-10*/-10C*	34.3/39.6	46/53	50/60	----	----	----
				HKR-15C*	34.3/39.6	46/53	50/60	17.2/19.8	21/25	25/25
				^HKR3-15*	0/0	3.3/3.3	15/15	31.3/36.1	39/45	40/50
ARUF364216AA ARUF364216AB ARUF364216AC	2.95	1/2	208/240-60-1	-----	0/0	3.7/3.7	15/15	----	----	----
				HKR-03*	10.8/12.5	17/19	20/20	----	----	----
				HKR-05*/-05C*	17.1/19.8	25/28	30/30	----	----	----
				HKR-06*	21.6/25.0	31/35	40/40	----	----	----
				HKR-10*/-10C*	34.3/39.6	47/53	60/60	----	----	----

See Notes on Page 9.

AIR HANDLER ELECTRICAL DATA — ARUF WITH HKR ELECTRIC HEAT (CONT.)

AIR HANDLER MODEL	MOTOR		VOLTS-HERTZ-PHASE	HEATER KIT	CIRCUIT 1			CIRCUIT 2		
	AMP+	HP			HEATER AMPS	MCA ¹	MOP ²	HEATER AMPS	MCA ¹	MOP ²
ARUF364216AA	2.95	1/2	208/240-60-1	HKR-15C*	34.3/39.6	47/53	60/60	17.1/19.8	22/25	30/30
ARUF364216AB				HKR-20C*	34.3/39.6	47/53	60/60	34.3/39.6	43/49	60/60
ARUF364216AC				HKR-21C*	37.9/43.8	51/58	60/60	37.9/43.8	48/55	60/60
				^HKR3-15*	0/0	3.7/3.7	15/15	31.2/36.1	39/45	60/60
				^HKR3-20*	0/0	3.7/3.7	15/15	40.6/46.9	51/59	60/60
ARUF364216BA	2.95	1/2	208/240-60-1	-----	0/0	3.7/3.7	15/15	-----	-----	-----
				HKR-03*	10.8/12.5	17/19	20/20	-----	-----	-----
				HKR-05*/-05C*	17.1/19.8	25/28	30/30	-----	-----	-----
				HKR-06*	21.6/25.0	31/35	40/40	-----	-----	-----
				HKR-08*/-08C*	25.2/29.1	35/40	40/40	-----	-----	-----
				HKR-10*/-10C*	34.3/39.6	47/53	60/60	-----	-----	-----
				HKR-15C*	34.3/39.6	47/53	60/60	17.1/19.8	22/25	30/30
				HKR-20C*	34.3/39.6	47/53	60/60	34.3/39.6	43/49	60/60
				HKR-21C*	37.9/43.8	51/58	60/60	37.9/43.8	48/55	60/60
				^HKR3-15*	0/0	3.7/3.7	15/15	31.2/36.1	39/45	60/60
				^HKR3-20*	0/0	3.7/3.7	15/15	40.6/46.9	51/59	60/60
ARUF364216CA	3.12	1/2	208/240-60-1	-----	0/0	3.7/3.9	15/15	-----	-----	-----
				HKR-03*	10.8/12.5	17/20	20/20	-----	-----	-----
				HKR-05*/-05C*	17.2/19.8	25/29	30/30	-----	-----	-----
				HKR-06*	21.7/25.0	31/35	35/40	-----	-----	-----
				HKR-08*/-08C*	25.3/29.2	35/40	40/45	-----	-----	-----
				HKR-10*/-10C*	34.3/39.6	47/53	50/60	-----	-----	-----
				HKR-15C*	34.3/39.6	47/53	50/60	17.1/19.8	21/25	25/25
				HKR-20C*	34.3/39.6	47/53	50/60	34.3/39.6	43/49	45/50
				HKR-21C*	37.9/43.8	51/59	60/60	37.9/43.8	47/55	50/60
				^HKR3-15*	0/0	3.7/3.9	15/15	31.3/36.1	39/45	40/50
	^HKR3-20*	0/0	3.7/3.9	15/15	40.7/46.9	51/59	60/60			
ARUF374316AA	3.39	1/2	208/240-60-1	-----	0/0	4.2/4.2	15/15	-----	-----	-----
ARUF374316BA				HKR-03*	10.8/12.5	18/20	20/20	-----	-----	-----
				HKR-05*/-05C*	17.1/19.8	26/29	30/30	-----	-----	-----
				HKR-06*	21.6/25.0	31/35	40/40	-----	-----	-----
				HKR-08*/-08C*	25.2/29.1	36/41	40/40	-----	-----	-----
				HKR-10*/-10C*	34.3/39.6	47/54	60/60	-----	-----	-----
				HKR-15C*	34.3/39.6	47/54	60/60	17.1/19.8	22/25	30/30
				HKR-20C*	34.3/39.6	47/54	60/60	34.3/39.6	43/49	60/60
				HKR-21C*	37.9/43.8	52/59	60/60	37.9/43.8	48/55	60/60
				^HKR3-15*	0/0	4.2/4.2	15/15	31.2/36.1	39/45	60/60
	^HKR3-20*	0/0	4.2/4.2	15/15	40.6/46.9	51/59	60/60			
ARUF374316CA	3.39	1/2	208/240-60-1	-----	0/0	4.2/4.2	15/15	-----	-----	-----
				HKR-03*	10.8/12.5	18/20	20/20	-----	-----	-----
				HKR-05*/-05C*	17.2/19.8	26/29	30/30	-----	-----	-----
				HKR-06*	21.7/25.0	31/35	35/40	-----	-----	-----
				HKR-08*/-08C*	25.3/29.2	36/41	40/45	-----	-----	-----
				HKR-10*/-10C*	34.3/39.6	47/54	50/60	-----	-----	-----

See Notes on Page 14.

AIR HANDLER ELECTRICAL DATA — ARUF WITH HKR ELECTRIC HEAT (CONT.)

AIR HANDLER MODEL	MOTOR		VOLTS-HERTZ-PHASE	HEATER KIT	CIRCUIT 1			CIRCUIT 2		
	AMP+	HP			HEATER AMPS	MCA ¹	MOP ²	HEATER AMPS	MCA ¹	MOP ²
ARUF374316CA	3.39	1/2	208/240-60-1	HKR-15C*	34.3/39.6	47/54	50/60	17.2/19.8	21/25	25/25
				HKR-20C*	34.3/39.6	47/54	50/60	34.3/39.6	43/49	45/50
				HKR-21C*	37.9/43.8	52/59	60/60	37.9/43.8	47/55	50/60
				^HKR3-15*	0/0	4.2/4.2	15/15	31.3/36.1	39/45	40/50
				^HKR3-20*	0/0	4.2/4.2	15/15	40.7/46.9	51/59	60/60
ARUF486016AA ARUF486016AB ARUF486016BA	4.3	3/4	208/240-60-1	-----	0/0	5.4/5.4	15/15	-----	-----	-----
				HKR-03*	10.8/12.5	19/21	20/20	-----	-----	-----
				HKR-05*/-05C*	17.1/19.8	27/30	30/30	-----	-----	-----
				HKR-06*	21.6/25.0	32/37	40/40	-----	-----	-----
				HKR-08*/-08C*	25.2/29.1	37/39	40/40	-----	-----	-----
				HKR-10*/-10C*	34.3/39.6	48/55	60/60	-----	-----	-----
				HKR-15C*	34.3/39.6	48/55	60/60	17.1/19.8	22/25	30/30
				HKR-20C*	34.3/39.6	48/55	60/60	34.3/39.6	43/49	60/60
				HKR-21C*	37.9/43.8	53/59	60/60	37.9/43.8	48/55	60/60
				^HKR3-15*	0/0	5.4/5.4	15/15	31.2/36.1	39/45	60/60
				^HKR3-20*	0/0	5.4/5.4	15/15	40.6/46.9	51/59	60/60
ARUF486016CA	4.06	3/4	208/240-60-1	-----	0/0	5.1/5.1	15/15	-----	-----	-----
				HKR-03*	10.8/12.5	19/21	20/25	-----	-----	-----
				HKR-05*/-05C*	17.2/19.8	27/30	30/30	-----	-----	-----
				HKR-06*	21.7/25	32/36	35/40	-----	-----	-----
				HKR-08*/-08C*	25.3/29.2	37/42	40/45	-----	-----	-----
				HKR-10*/-10C*	34.3/39.6	48/55	50/60	-----	-----	-----
				HKR-15C*	34.3/39.6	48/55	50/60	17.2/19.8	21/25	25/25
				HKR-20C*	34.3/39.6	48/55	50/60	34.3/39.6	43/49	45/50
				HKR-21C*	37.9/43.8	52/60	60/60	37.9/43.8	47/55	50/60
				^HKR3-15*	0/0	5.1/5.1	15/15	31.3/36.1	39/45	40/50
				^HKR3-20*	0/0	5.1/5.1	15/15	40.7/46.9	51/59	60/60
ARUF496116AA	4.3	3/4	208/240-60-1	-----	0/0	5.4/5.4	15/15	-----	-----	-----
				HKR-03*	10.8/12.5	19/21	20/20	-----	-----	-----
				HKR-05*/-05C*	17.1/19.8	27/30	30/30	-----	-----	-----
				HKR-06*	21.6/25.0	32/37	40/40	-----	-----	-----
				HKR-08*/-08C*	25.2/29.1	37/39	40/40	-----	-----	-----
				HKR-10*/-10C*	34.3/39.6	48/55	60/60	-----	-----	-----
				HKR-15C*	34.3/39.6	48/55	60/60	17.1/19.8	22/25	30/30
				HKR-20C*	34.3/39.6	48/55	60/60	34.3/39.6	43/49	60/60
				HKR-21C*	37.9/43.8	53/59	60/60	37.9/43.8	48/55	60/60
				HKR3-15*	0/0	5.4/5.4	15/15	31.2/36.1	39/45	60/60
				HKR3-20*	0/0	5.4/5.4	15/15	40.6/46.9	51/59	60/60
ARUF496116CA	4.06	3/4	208/240-60-1	-----	0/0	5.1/5.1	15/15	-----	-----	-----
				HKR-03*	10.8/12.5	19/21	20/25	-----	-----	-----
				HKR-05*/-05C*	17.2/19.8	27/30	30/30	-----	-----	-----
				HKR-06*	21.7/25.0	32/36	35/40	-----	-----	-----
				HKR-08*/-08C*	25.3/29.2	37/42	40/45	-----	-----	-----
				HKR-10*/-10C*	34.3/39.6	48/55	50/60	-----	-----	-----
				HKR-15C*	34.3/39.6	48/55	50/60	17.2/19.8	21/25	25/25
				HKR-20C*	34.3/39.6	48/55	50/60	34.3/39.6	43/49	45/50
				HKR-21C*	37.9/43.8	52/60	60/60	37.9/43.8	47/55	50/60
				^HKR3-15*	0/0	5.1/5.1	15/15	31.3/36.1	39/45	40/50
				^HKR3-20*	0/0	5.1/5.1	15/15	40.7/46.9	51/59	60/60

See Notes on the following page.

AIR HANDLER ELECTRICAL DATA — ASPT

MODEL & HEAT KIT USAGE	CIRCUIT 1			CIRCUIT 2			SINGLE-POINT KIT	
	HEATER AMPS	MCA ¹	MOP ²	HEATER AMPS	MCA ¹	MOP ²	MCA ¹	MOP ²
ASPT24B14	0 / 0	3.1 / 3.1	15 / 15	---	---	---	---	---
HKS*03XC*	10.8 / 12.5	17 / 19	20 / 20	---	---	---	--	--
HKS*05XC*	17.3 / 20.0	25 / 28	30 / 30	---	---	---	--	--
HKS*06XC*	21.6 / 25.0	30 / 34	35 / 35	---	---	---	--	--
HKS*08XC*	25.3 / 33.3	39 / 45	40 / 45	---	---	---	--	--
HKS*10XC*	34.7 / 40.0	46 / 53	50 / 60	---	---	---	--	--
HKSC15*##	34.7 / 40.0	46 / 53	50 / 60	17.2 / 19.8	22 / 25	25 / 25	68 / 78	70 / 80
ASPT30C14	0 / 0	3.9 / 3.9	15 / 15	---	---	---	---	---
HKS*03XC*	10.8 / 12.5	17 / 20	20 / 20	---	---	---	--	--
HKS*05XC*	17.3 / 20.0	26 / 29	30 / 30	---	---	---	--	--
HKS*06XC*	21.6 / 25.0	31 / 35	35 / 40	---	---	---	--	--
HKS*08XC*	25.3 / 33.3	40 / 46	40 / 50	---	---	---	--	--
HKS*10XC*	34.7 / 40.0	47 / 54	50 / 60	---	---	---	--	--
HKSC15*##	34.7 / 40.0	47 / 54	50 / 60	17.2 / 19.8	22 / 25	25 / 25	69 / 79	70 / 80
ASPT36C14	0 / 0	3.9 / 3.9	15 / 15	---	---	---	--	--
HKS*03XC*	10.8 / 12.5	17 / 20	20 / 20	---	---	---	--	--
HKS*05XC*	17.3 / 20.0	26 / 29	30 / 30	---	---	---	--	--
HKS*06XC*	21.6 / 25.0	31 / 35	40 / 40	---	---	---	--	--
HKS*08XC*	25.3 / 33.3	40 / 46	40 / 40	---	---	---	--	--
HKS*10XC*	34.7 / 40.0	47 / 54	60 / 60	---	---	---	--	--
HKSC15*##	34.7 / 40.0	47 / 54	60 / 60	17.2 / 19.8	22 / 25	25 / 25	69 / 79	70 / 80
HKSC19*##	34.3 / 39.6	47 / 54	60 / 60	34.3 / 39.6	43 / 50	45 / 50	91 / 104	100 / 110
HKSC15XF*	0/0	3.9 / 3.9	15/15	30/34.6	38/44	40/50	--	--
HKSC20XF*	0/0	3.9 / 3.9	15/15	37/43	47/54	50/60	--	--
ASPT42D14	0 / 0	6.1 / 6.1	15 / 15	---	---	---	--	--
HKS*03XC*	10.8 / 12.5	20 / 22	20 / 25	---	---	---	--	--
HKS*05XC*	17.3 / 20.0	28 / 31	30 / 35	---	---	---	--	--
HKS*06XC*	21.6 / 25.0	33 / 37	35 / 40	---	---	---	--	--
HKS*08XC*	25.3 / 33.3	42 / 48	45 / 50	---	---	---	--	--
HKS*10XC*	34.7 / 40.0	49 / 56	50 / 60	---	---	---	--	--
HKSC15*##	34.7 / 40.0	49 / 56	50 / 60	17.2 / 19.8	22 / 25	25 / 25	71 / 81	80 / 90
HKSC20*##	34.3 / 39.6	49 / 56	50 / 60	34.3 / 39.6	43 / 50	45 / 50	93 / 106	100 / 110
HKSC15XF*	0/0	6.1 / 6.1	15/15	30/34.6	38/44	40/50	--	--
HKSC20XF*	0/0	6.1 / 6.1	15/15	37/43	47/54	50/60	--	--

¹ Minimum Circuit Ampacity (Heater Amps + Motor Amps) X 1.25
² Maximum Overcurrent Protection = 2.25 X Motor Amps + Heater Amps
[^] Circuit 1: Single-phase for Air Handlers Circuit 2: Three-phase for HKR3 Heater Kits
* Revision level that may or may not be designated
C = Circuit Breaker Option
--- indicates Not Required

AIR HANDLER ELECTRICAL DATA — ASPT (CONT.)

MODEL & HEAT KIT USAGE	CIRCUIT 1			CIRCUIT 2			SINGLE-POINT KIT	
	HEATER AMPS	MCA ¹	MOP ²	HEATER AMPS	MCA ¹	MOP ²	MCA ¹	MOP ²
ASPT48D14	0 / 0	8.3 / 8.3	15 / 15	---	---	---	--	--
HK5*03XC*	10.8 / 12.5	22 / 24	25 / 25	---	---	---	--	--
HK5*05XC*	17.3 / 20.0	30 / 33	30 / 35	---	---	---	--	--
HK5*06XC*	21.6 / 25.0	35 / 40	40 / 40	---	---	---	--	--
HK5*08XC*	25.3 / 33.3	44 / 50	45 / 50	---	---	---	--	--
HK5*10XC*	34.7 / 40.0	52 / 58	60 / 60	---	---	---	--	--
HKSC15*##	34.7 / 40.0	52 / 58	60 / 60	17.2 / 19.8	22 / 25	25 / 25	73 / 83	80 / 90
HKSC20*##	34.3 / 39.6	52 / 58	60 / 60	34.3 / 39.6	43 / 50	45 / 50	95 / 108	100 / 110
HKSC15XF*	0/0	8.3 / 8.3	15/15	30/34.6	38/44	40/50	--	--
HKSC20XF*	0/0	8.3 / 8.3	15/15	37/43	47/54	50/60	--	--
HKSC25*##	52 / 60	73 / 83	80 / 90	34.7 / 40	43 / 50	45 / 50	117 / 133	125 / 150
ASPT60D14	0 / 0	8.3 / 8.3	15 / 15	---	---	---	--	--
HK5*03XC*	10.8 / 12.5	22 / 24	25 / 25	---	---	---	--	--
HK5*05XC*	17.3 / 20.0	30 / 33	30 / 35	---	---	---	--	--
HK5*06XC*	21.6 / 25.0	35 / 40	40 / 40	---	---	---	--	--
HK5*08XC*	25.3 / 33.3	44 / 50	45 / 50	---	---	---	--	--
HK5*10XC*	34.7 / 40.0	52 / 58	60 / 60	---	---	---	--	--
HKSC15*##	34.7 / 40.0	52 / 58	60 / 60	17.2 / 19.8	22 / 25	25 / 25	73 / 83	80 / 90
HKSC20*##	34.3 / 39.6	52 / 58	60 / 60	34.3 / 39.6	43 / 50	45 / 50	95 / 108	100 / 110
HKSC15XF*	0/0	8.3 / 8.3	15/15	30/34.6	38/44	40/50	--	--
HKSC20XF*	0/0	8.3 / 8.3	15/15	37/43	47/54	50/60	--	--
HKSC25*##	52 / 60	73 / 83	80 / 90	34.7 / 40	43 / 50	45 / 50	117 / 133	125 / 150

¹ Minimum Circuit Ampacity (Heater Amps + Motor Amps) X 1.25

² Maximum Overcurrent Protection = 2.25 X Motor Amps + Heater Amps

[^] Circuit 1: Single-phase for Air Handlers Circuit 2: Three-phase for HKR3 Heater Kits

* Revision level that may or may not be designated

C = Circuit Breaker Option

--- indicates Not Required

AIR HANDLER ELECTRICAL DATA — ASPF

MODEL & HEAT KIT USAGE	CIRCUIT 1			CIRCUIT 2			SINGLE-POINT KIT	
	HEATER AMPS	MCA ¹	MOP ²	HEATER AMPS	MCA ¹	MOP ²	MCA ¹	MOP ²
ASPF183016B*	0 / 0	3.1 / 3.1	15 / 15	---	---	---	---	---
HKR-03*	10.8 / 12.5	17 / 19	20 / 20	---	---	---	--	--
HKR-05* / -05C*	17.1 / 19.8	27 / 30	30 / 30	---	---	---	--	--
HKR-06*	21.6 / 25.0	32 / 37	40 / 40	---	---	---	--	--
HKR-08* / -08C*	25.3 / 29.2	37 / 39	40 / 40	---	---	---	--	--
HKR-10* / -10C*	34.3 / 39.6	48 / 55	60 / 60	---	---	---	--	--
HKA-15C*	34.3 / 39.6	46 / 53	60 / 60	17.2 / 19.8	21 / 25	30 / 30	67/77	70 / 80
^HKR3-15*	0 / 0	3.1 / 3.1	15 / 15	31.2 / 36.1	39 / 45	60 / 60	--	--
ASPF183016D*	0 / 0	3.6 / 3.6	15 / 15	---	---	---	---	---
HKR-03*	10.8 / 12.5	17 / 19	20 / 20	---	---	---	--	--
HKR-05* / -05C*	17.2 / 19.8	25 / 28	30 / 30	---	---	---	--	--
HKR-06*	21.6 / 25.0	31 / 35	35 / 35	---	---	---	--	--
HKR-08* / -08C*	25.3 / 29.2	35 / 40	40 / 45	---	---	---	--	--
HKR-10* / -10C*	34.3 / 39.6	47 / 53	50 / 60	---	---	---	--	--
HKA-15C*	34.3 / 39.6	47 / 53	50 / 60	17.2 / 19.8	21 / 25	25 / 25	68/78	70 / 80
^HKR3-15*	0 / 0	3.6 / 3.6	15 / 15	31.2 / 36.1	39 / 45	40 / 50	--	--
ASPF303616**	0 / 0	3.8 / 3.8	15 / 15	---	---	---	--	--
HKR-03*	10.8 / 12.5	15 / 17	20 / 20	---	---	---	--	--
HKR-05* / -05C*	17.1 / 19.8	24 / 27	30 / 30	---	---	---	--	--
HKR-06*	21.6 / 25.0	32 / 37	40 / 40	---	---	---	--	--
HKR-08* / -08C*	25.3 / 29.2	35 / 40	40 / 40	---	---	---	--	--
HKR-10* / -10C*	34.3 / 39.6	48 / 55	60 / 60	---	---	---	--	--
HKA-15C*	34.3 / 39.6	46 / 53	60 / 60	17.2 / 19.8	21 / 25	30 / 30	68/78	70 / 80
HKA-20C*	34.3 / 39.6	51 / 57	60 / 60	34.3 / 39.6	43 / 50	60 / 60	90/103	90 / 110
^HKR3-15*	0 / 0	3.8 / 3.8	15 / 15	31.2 / 36.1	39 / 45	60 / 60	--	--
^HKR3-20*	0 / 0	3.8 / 3.8	15 / 15	40.6 / 46.9	51 / 59	60 / 60	--	--
ASPF313716A*	0 / 0	3.8 / 3.8	15 / 15	---	---	---	---	---
HKR-03*	10.8 / 12.5	15 / 17	20 / 20	---	---	---	---	---
HKR-05* / -05C*	17.1 / 19.8	24 / 27	30 / 30	---	---	---	---	---
HKR-06*	21.6 / 25.0	32 / 37	40 / 40	---	---	---	---	---
HKR-08* / -08C*	25.3 / 29.2	35 / 40	40 / 40	---	---	---	---	---
HKR-10* / -10C*	34.3 / 39.6	48 / 55	60 / 60	---	---	---	---	---
HKA-15C*	34.3 / 39.6	46 / 53	60 / 60	17.2 / 19.8	21 / 25	30 / 30	68/78	70 / 80
HKA-20C*	34.3 / 39.6	51 / 57	60 / 60	34.3 / 39.6	43 / 50	60 / 60	90/103	90 / 110
^HKR3-15*	0 / 0	3.8 / 3.8	15 / 15	31.2 / 36.1	39 / 45	60 / 60	--	--
^HKR3-20*	0 / 0	3.8 / 3.8	15 / 15	40.6 / 46.9	51 / 59	60 / 60	--	--

¹ Minimum Circuit Ampacity @ 208 / 240 V

² Maximum Overcurrent Protection Device @ 208 / 240 V

* Revision level that may or may not be designated

C Circuit breaker option CA is for 208V and CB is for 240V

--- indicates Not Required

^ Heat Kit requires three-phase power supply

Note: All HKR ampacities noted above include air handler motor amps, excluding three-phase models.

AIR HANDLER ELECTRICAL DATA — ASPF (CONT.)

MODEL & HEAT KIT USAGE	CIRCUIT 1			CIRCUIT 2			SINGLE-POINT KIT	
	HEATER AMPS	MCA ¹	MOP ²	HEATER AMPS	MCA ¹	MOP ²	MCA ¹	MOP ²
ASPF313716D*	0 / 0	3.9 / 3.9	15 / 15	---	---	---	---	---
HKR-03*	10.8 / 12.5	17 / 20	20 / 20	---	---	---	---	---
HKR-05* / -05C*	17.2 / 19.8	25 / 29	30 / 30	---	---	---	---	---
HKR-06*	21.6 / 25.0	31 / 35	35 / 40	---	---	---	---	---
HKR-08* / -08C*	25.3 / 29.2	35 / 40	40 / 45	---	---	---	---	---
HKR-10* / -10C*	34.3 / 39.6	47 / 53	50 / 60	---	---	---	---	---
HKA-15C*	34.3 / 39.6	47 / 53	50 / 60	17.2 / 19.8	21 / 25	25 / 25	68/78	70 / 80
HKA-20C*	34.3 / 39.6	47 / 53	50 / 60	34.3 / 39.6	43 / 49	45 / 50	90/103	90 / 110
^HKR3-15*	0 / 0	3.9 / 3.9	15 / 15	31.2 / 36.1	39 / 45	40 / 50	--	--
^HKR3-20*	0 / 0	3.9 / 3.9	15 / 15	40.6 / 46.9	51 / 59	60 / 60	--	--
ASPF426016B*	0 / 0	5.3 / 5.3	15 / 15	---	---	---	---	---
HKR-03*	10.8 / 12.5	15 / 17	20 / 20	---	---	---	---	---
HKR-05* / -05C*	17.1 / 19.8	24 / 27	30 / 30	---	---	---	---	---
HKR-06*	21.6 / 25.0	32 / 37	40 / 40	---	---	---	---	---
HKR-08* / -08C*	25.3 / 29.2	35 / 40	40 / 40	---	---	---	---	---
HKR-10* / -10C*	34.3 / 39.6	46 / 53	60 / 60	---	---	---	---	---
HKA-15C*	34.3 / 39.6	51 / 57	60 / 60	17.2 / 19.8	21 / 25	30 / 30	70/80	70 / 80
HKA-20C*	34.3 / 39.6	51 / 57	60 / 60	34.3 / 39.6	43 / 50	60 / 60	91/104	100 / 110
^HKR3-15*	0 / 0	5.3 / 5.3	15 / 15	31.2 / 36.1	39 / 45	60 / 60	--	--
^HKR3-20*	0 / 0	5.3 / 5.3	15 / 15	40.6 / 46.9	51 / 59	60 / 60	--	--
ASPF426016D*	0 / 0	6.4 / 6.4	15 / 15	---	---	---	---	---
HKR-03*	10.8 / 12.5	20 / 22	20 / 25	---	---	---	---	---
HKR-05* / -05C*	17.2 / 19.8	28 / 31	30 / 35	---	---	---	---	---
HKR-06*	21.6 / 25.0	33 / 38	35 / 40	---	---	---	---	---
HKR-08* / -08C*	25.3 / 29.2	38 / 43	40 / 45	---	---	---	---	---
HKR-10* / -10C*	34.3 / 39.6	49 / 56	50 / 60	---	---	---	---	---
HKA-15C*	34.3 / 39.6	49 / 56	50 / 60	17.2 / 19.8	21 / 25	25 / 25	71/81	80 / 90
HKA-20C*	34.3 / 39.6	49 / 56	50 / 60	34.3 / 39.6	43 / 49	45 / 50	92/105	100 / 110
^HKR3-15*	0 / 0	6.4 / 6.4	15 / 15	31.2 / 36.1	39 / 45	40 / 50	--	--
^HKR3-20*	0 / 0	6.4 / 6.4	15 / 15	40.6 / 46.9	51 / 59	60 / 60	--	--

¹ Minimum Circuit Ampacity @ 208 / 240 V

² Maximum Overcurrent Protection Device @ 208 / 240 V

* Revision level that may or may not be designated

C Circuit breaker option CA is for 208V and CB is for 240V

--- indicates Not Required

^ Heat Kit requires three-phase power supply

Note: HKA meets the new UL1995 requirements for 15 and 20KW heaters

AIR HANDLER ELECTRICAL DATA — MBVC

MODEL & HEAT KIT USAGE	CIRCUIT 1			CIRCUIT 2			SINGLE-POINT KIT	
	HEATER AMPS	MCA ¹	MOP ²	HEATER AMPS	MCA ¹	MOP ²	MCA ¹	MOP ²
MBVC1200AA-1A*	0 / 0	4.3 / 4.3	15 / 15	---	---	---	---	---
HKR-03*	10.8 / 12.5	17.8 / 19.9	20 / 20	---	---	---	---	---
HKR-05* / 05C*	17.2 / 19.8	25.7 / 29.0	30 / 30	---	---	---	---	---
HKR-06*	21.7 / 25.0	31.3 / 35.5	35 / 40	---	---	---	---	---
HKR-08* / -08C*	25.3 / 29.2	35.8 / 40.7	40 / 45	---	---	---	---	---
HKR-10* / -10C*	34.3 / 39.6	47.1 / 53.7	50 / 60	---	---	---	---	---
HKA-15C*	34.3 / 39.6	47.1 / 53.7	50 / 60	17.2 / 19.8	21.4 / 24.7	25 / 25	69/79	70 / 80
MBVC1600AA-1A*	0 / 0	6.3 / 6.3	15 / 15	---	---	---	---	---
HKR-03*	10.8 / 12.5	19.8 / 21.9	20 / 25	---	---	---	---	---
HKR-05* / 05C*	17.2 / 19.8	27.7 / 31.0	30 / 35	---	---	---	---	---
HKR-06*	21.7 / 25.0	33.3 / 37.5	35 / 40	---	---	---	---	---
HKR-08* / -08C*	25.3 / 29.2	37.8 / 42.7	40 / 45	---	---	---	---	---
HKR-10* / -10C*	34.3 / 39.6	49.1 / 55.7	50 / 60	---	---	---	---	---
HKA-15C*	34.3 / 39.6	49.1 / 55.7	50 / 60	17.2 / 19.8	21.4 / 24.7	25 / 25	71/81	80 / 90
MBVC2000AA-1A*	0 / 0	5.8 / 5.8	15 / 15	---	---	---	---	---
HKR-03*	10.8 / 12.5	19.3 / 21.4	20 / 25	---	---	---	---	---
HKR-05* / 05C*	17.2 / 19.8	27.2 / 30.5	30 / 35	---	---	---	---	---
HKR-06*	21.7 / 25.0	32.8 / 37.0	35 / 40	---	---	---	---	---
HKR-08* / -08C*	25.3 / 29.2	37.3 / 42.2	40 / 45	---	---	---	---	---
HKR-10* / -10C*	34.3 / 39.6	48.6 / 55.2	50 / 60	---	---	---	---	---
HKA-15C*	34.3 / 39.6	48.6 / 55.2	50 / 60	17.2 / 19.8	21.4 / 24.7	25 / 25	70/80	80 / 90
HKA-20C*	34.3 / 39.6	48.6 / 55.2	50 / 60	34.3 / 39.6	42.9 / 49.5	45 / 50	92/105	100 / 110

¹ Minimum Circuit Ampacity @ 208 / 240 V

² Maximum Overcurrent Protection Device @ 208 / 240 V

* Revision level that may or may not be designated

C = Circuit Breaker Option CA is for 208V and CB is for 240V

^ Heat Kit requires three-phase power supply

--- indicates Not Required

Note: All HKR ampacities noted above include air handler motor amps, excluding three-phase models.

AIR HANDLER ELECTRICAL DATA — MBR

MODEL & HEAT KIT USAGE	CIRCUIT 1			CIRCUIT 2			SINGLE-POINT KIT	
	HEATER AMPS	MCA ¹	MOP ²	HEATER AMPS	MCA ¹	MOP ²	MCA ¹	MOP ²
MBR0800AA-1 **	0 / 0	1.9 / 1.9	15 / 15	---	---	---	---	---
HKR-03*	10.8 / 12.5	15 / 17	20 / 20	---	---	---	---	---
HKR-05* / 05C*	17.1 / 19.8	23 / 26	30 / 30	---	---	---	---	---
HKR-06*	21.6 / 25.0	29 / 33	40 / 40	---	---	---	---	---
HKR-08* / -08C*	25.3 / 29.2	33 / 38	40 / 40	---	---	---	---	---
HKR-10* / -10C*	34.3 / 39.6	44 / 51	60 / 60	---	---	---	---	---
MBR1200AA-1 **	0 / 0	3.0 / 3.0	15 / 15	---	---	---	---	---
HKR-03*	10.8 / 12.5	16 / 18	20 / 20	---	---	---	---	---
HKR-05* / 05C*	17.1 / 19.8	24 / 27	40 / 40	---	---	---	---	---
HKR-06*	21.6 / 25.0	29 / 34	40 / 40	---	---	---	---	---
HKR-08* / -08C*	25.3 / 29.2	34 / 39	40 / 40	---	---	---	---	---
HKR-10* / -10C*	34.3 / 39.6	45 / 52	60 / 60	---	---	---	---	---
HKA-15C*	34.3 / 39.6	45 / 52	60 / 60	17.2 / 19.8	22 / 25	30 / 30	67/77	70 / 80
HKA-20C*	34.3 / 39.6	45 / 52	60 / 60	34.3 / 39.6	43 / 50	60 / 60	89/102	90 / 110
^HKR3-15*	0 / 0	3.0 / 3.0	15 / 15	31.2 / 36.1	39 / 45	60 / 60	---	---
^HKR3-20*	0 / 0	3.0 / 3.0	15 / 15	40.6 / 46.9	51 / 59	60 / 60	---	---
MBR1600AA-1 **	0 / 0	3.8 / 3.8	15 / 15	---	---	---	---	---
HKR-03*	10.8 / 12.5	17 / 19	20 / 20	---	---	---	---	---
HKR-05* / 05C*	17.1 / 19.8	24 / 28	40 / 40	---	---	---	---	---
HKR-06*	21.6 / 25.0	30 / 34	40 / 40	---	---	---	---	---
HKR-08* / -08C*	25.3 / 29.2	35 / 39	40 / 40	---	---	---	---	---
HKR-10* / -10C*	34.3 / 39.6	46 / 53	60 / 60	---	---	---	---	---
HKA-15C*	34.3 / 39.6	46 / 53	60 / 60	17.2 / 19.8	22 / 25	30 / 30	68/78	70 / 80
HKA-20C*	34.3 / 39.6	46 / 53	60 / 60	34.3 / 39.6	43 / 50	60 / 60	90/103	90 / 110
^HKR3-15*	0 / 0	3.8 / 3.8	15 / 15	31.26 / 36.1	39 / 45	60 / 60	---	---
^HKR3-20*	0 / 0	3.8 / 3.8	15 / 15	40.6 / 46.9	51 / 59	60 / 60	---	---
MBR2000AA-1 **	0 / 0	4.9 / 4.9	15 / 15	---	---	---	---	---
HKR-03*	10.8 / 12.5	17 / 20	20 / 20	---	---	---	---	---
HKR-05* / 05C*	17.1 / 19.8	25 / 29	40 / 40	---	---	---	---	---
HKR-06*	21.6 / 25.0	31 / 35	40 / 40	---	---	---	---	---
HKR-08* / -08C*	25.3 / 29.2	36 / 40	60 / 60	---	---	---	---	---
HKR-10* / -10C*	34.3 / 39.6	47 / 53	60 / 60	---	---	---	---	---
HKA-15C*	34.3 / 39.6	47 / 53	60 / 60	17.2 / 19.8	22 / 25	30 / 30	69/79	70 / 80
HKA-20C*	34.3 / 39.6	47 / 53	60 / 60	34.3 / 39.6	43 / 50	60 / 60	91/104	100 / 110
^HKR3-15*	0 / 0	4.9 / 4.9	15 / 15	31.2 / 36.1	39 / 45	60 / 60	---	---
^HKR3-20*	0 / 0	4.9 / 4.9	15 / 15	40.6 / 46.9	51 / 59	60 / 60	---	---

¹ Minimum Circuit Ampacity @ 208 / 240 V

² Maximum Overcurrent Protection Device @ 208 / 240 V

* Revision level that may or may not be designated

C = Circuit Breaker Option CA is for 208V and CB is for 240V

^ Heat Kit requires three-phase power supply

--- indicates Not Required

Note: All HKR ampacities noted above include air handler motor amps, excluding three-phase models.

ELECTRICAL DATA FOR GPC15M PACKAGED UNITS (BLOWER ONLY, HEAT MODE)

MODEL AND HEAT KIT USAGE	CIRCUIT #1		CIRCUIT #2		ACTUAL kW / BTU@ 240V
	MCA ¹	MOP ²	MCA ¹	MOP ²	
GPC1524M41	2.4	---	---	---	---
HKR-05*, HKR-05C*	21 / 25	25 / 25	---	---	4.75 / 16,200
HKR-08*, HKR-08C*	32 / 36	35 / 40	---	---	7.00 / 23,800
HKR-10*, HKR-10C*	43 / 49	45 / 50	---	---	9.50 / 32,400
GPC1530M41	2.4	---	---	---	---
HKR-05*, HKR-05C*	21 / 25	25 / 25	---	---	4.75 / 16,200
HKR-08*, HKR-08C*	32 / 36	35 / 40	---	---	7.0 / 23,800
HKR-10*, HKR-10C*	43 / 49	45 / 50	---	---	9.5 / 32,400
HKP-15C*	43 / 49	45 / 50	21 / 25	25 / 25	14.25 / 48,600
GPC1536M41	2.4	---	---	---	---
HKR-05*, HKR-05C*	21 / 25	25 / 25	---	---	4.75 / 16,200
HKR-08*, HKR-08C*	32 / 36	35 / 40	---	---	7.00 / 23,800
HKR-10*, HKR-10C*	43 / 49	45 / 50	---	---	9.50 / 32,400
HKP-15C*	43 / 49	45 / 50	21 / 25	25 / 25	14.25 / 48,600
GPC1542M41	3.6	---	---	---	---
HKR-05*, HKR-05C*	21 / 25	25 / 25	---	---	4.75 / 16,200
HKR-08*, HKR-08C*	32 / 36	35 / 40	---	---	7.0 / 23,800
HKR-10*, HKR-10C*	43 / 49	45 / 50	---	---	9.5 / 32,400
HKP-15C*	43 / 49	45 / 50	21 / 25	25 / 25	14.25 / 48,600
GPC1548M41	3.6	---	---	---	---
HKR-05*, HKR-05C*	21 / 25	25 / 25	---	---	4.75 / 16,200
HKR-08*, HKR-08C*	32 / 36	35 / 40	---	---	7.00 / 23,800
HKR-10*, HKR-10C*	43 / 49	45 / 50	---	---	9.50 / 32,400
HKP-15C*	43 / 49	45 / 50	21 / 25	25 / 25	14.25 / 48,600
HKP-20C*	43 / 49	45 / 50	43 / 49	45 / 50	19.0 / 64,800

ELECTRICAL DATA FOR GPC13M PACKAGED UNITS (BLOWER ONLY, HEAT MODE)

MODEL AND HEAT KIT USAGE	CIRCUIT #1		CIRCUIT #2		SINGLE-POINT KIT		ACTUAL kW / BTU@ 240V
	MCA ¹	MOP ²	MCA ¹	MOP ²	MCA ¹	MOP ²	
GPC1336M41**	1.9	---	---	---	--	--	---
HKR-05*, HKR-05C*	21 / 25	25 / 25	---	---	25	40	4.75 / 16,200
HKR-08*, HKR-08C*	32 / 36	35 / 40	---	---	34 / 39	40 / 40	7.0 / 23,800
HKR-10*, HKR-10C*	43 / 49	45 / 50	---	---	45 / 52	60 / 60	9.5 / 32,400
HKP-15C*	43 / 49	45 / 50	21 / 25	25 / 25	66 / 76	70 / 80	14.25 / 48,600
GPC1348M41**	7.3	---	---	---	--	--	---
HKR-05*, HKR-05C*	21 / 25	25 / 25	---	---	32	50	4.75 / 16,200
HKR-08*, HKR-08C*	32 / 36	35 / 40	---	---	38 / 40	50	7.0 / 23,800
HKR-10*, HKR-10C*	43 / 49	45 / 50	---	---	49 / 56	60 / 60	9.5 / 32,400
HKP-15C*	43 / 49	45 / 50	21 / 25	25 / 25	70 / 80	80 / 90	14.25 / 48,600
HKP-20C	43 / 49	45 / 50	43 / 49	45 / 50	92 / 105	100 / 110	19.0 / 64,800
GPC1360M41**	9.5	---	---	---	--	--	---
HKR-05*, HKR-05C*	21 / 25	25 / 25	---	---	42	60	4.75 / 16,200
HKR-08*, HKR-08C*	32 / 36	35 / 40	---	---	42	60	7.0 / 23,800
HKR-10*, HKR-10C*	43 / 49	45 / 50	---	---	51 / 58	60 / 60	9.5 / 32,400
HKP-15C*	43 / 49	45 / 50	21 / 25	25 / 25	72 / 82	80 / 90	14.25 / 48,600
HKP-20C	43 / 49	45 / 50	43 / 49	45 / 50	93 / 107	100 / 110	19.0 / 64,800

See Notes on the following page.

ELECTRICAL DATA FOR GPC14H PACKAGED UNITS (BLOWER ONLY, HEAT MODE)

MODEL AND HEAT KIT USAGE	CIRCUIT #1		CIRCUIT #2		SINGLE-POINT KIT		ACTUAL kW / BTU@ 240V
	MCA ¹	MOP ²	MCA ¹	MOP ²	MCA ¹	MOP ²	
GPC1424H41**	1.9	---	---	---	--	--	---
HKR-05*, HKR-05C*	21 / 25	25 / 25	---	---	24 / 27	30 / 30	4.75 / 16,200
HKR-08*, HKR-08C*	32 / 36	35 / 40	---	---	33 / 38	40 / 40	7 / 23,800
HKR-10*, HKR-10C*	43 / 49	45 / 50	---	---	45 / 51	60 / 60	9.5 / 32,400
GPC1430H41**	2.3	---	---	---	--	--	---
HKR-05*, HKR-05C*	21 / 25	25 / 25	---	---	24 / 27	30 / 30	4.75 / 16,200
HKR-08*, HKR-08C*	32 / 36	35 / 40	---	---	34 / 39	40 / 40	7 / 23,800
HKR-10*, HKR-10C*	43 / 49	45 / 50	---	---	45 / 52	60 / 60	9.5 / 32,400
HKP-15C*	43 / 49	45 / 50	21 / 25	25 / 25	67 / 77	70 / 80	14.25 / 48,600
GPC1436H41**	2.3	---	---	---	--	--	---
HKR-05*, HKR-05C*	21 / 25	25 / 25	---	---	24 / 27	40 / 40	4.75 / 16,200
HKR-08*, HKR-08C*	32 / 36	35 / 40	---	---	34 / 39	40 / 40	7 / 23,800
HKR-10*, HKR-10C*	43 / 49	45 / 50	---	---	45 / 52	60 / 60	9.5 / 32,400
HKP-15C*	43 / 49	45 / 50	21 / 25	25 / 25	67 / 77	70 / 80	14.25 / 48,600
GPC1442H41**	3.6	---	---	---	--	--	---
HKR-05*, HKR-05C*	21 / 25	25 / 25	---	---	27	40 / 40	4.75 / 16,200
HKR-08*, HKR-08C*	32 / 36	35 / 40	---	---	34 / 39	40 / 40	7 / 23,800
HKR-10*, HKR-10C*	43 / 49	45 / 50	---	---	46 / 52	60 / 60	9.5 / 32,400
HKP-15C*	43 / 49	45 / 50	21 / 25	25 / 25	68 / 78	70 / 80	14.25 / 48,600
HKP-20C	43 / 49	45 / 50	43 / 49	45 / 50	90 / 103	90 / 110	19.0 / 64,800
GPC1448H41**	3.6	---	---	---	--	--	---
HKR-05*, HKR-05C*	21 / 25	25 / 25	---	---	29	45	4.75 / 16,200
HKR-08*, HKR-08C*	32 / 36	35 / 40	---	---	34 / 40	45	7 / 23,800
HKR-10*, HKR-10C*	43 / 49	45 / 50	---	---	46 / 53	60 / 60	9.5 / 32,400
HKP-15C*	43 / 49	45 / 50	21 / 25	25 / 25	68 / 78	70 / 80	14.25 / 48,600
HKP-20C	43 / 49	45 / 50	43 / 49	45 / 50	90 / 103	90 / 110	19.0 / 64,800
GPC1460H41**	7.5	---	---	---	--	--	---
HKR-05*, HKR-05C*	21 / 25	25 / 25	---	---	37.3	60	4.75 / 16,200
HKR-08*, HKR-08C*	32 / 36	35 / 40	---	---	37/40	60	7 / 23,800
HKR-10*, HKR-10C*	43 / 49	45 / 50	---	---	48 / 54	60 / 60	9.5 / 32,400
HKP-15C*	43 / 49	45 / 50	21 / 25	25 / 25	70 / 80	80 / 90	14.25 / 48,600
HKP-20C	43 / 49	45 / 50	43 / 49	45 / 50	92 / 105	100 / 110	19.0 / 64,800

¹ Minimum Circuit Ampacity @ 208 / 240 V

² Maximum Overcurrent Protection Device @ 208 / 240 V

* Revision level that may or may not be designated

C Circuit breaker option

^ Heat Kit requires three-phase power supply

NOTE: HKP-15C* and HKP-20C* replace HKR-15C and HKR-20C respectively to meet new UL1995 requirements.

ELECTRICAL DATA FOR GPC13H PACKAGED UNITS (BLOWER ONLY, HEAT MODE)

MODEL AND HEAT KIT USAGE	CIRCUIT #1		CIRCUIT #2		SINGLE-POINT KIT		ACTUAL KW / BTU@ 240V
	MCA ¹	MOP ²	MCA ¹	MOP ²	MCA ¹	MOP ²	
GPC1324H41**	1.9	---	---	---	--	--	---
HKR-05*, HKR-05C*	21 / 25	25 / 25	---	---	24 / 27	25 / 30	4.75 / 16,200
HKR-08*, HKR-08C*	32 / 36	35 / 40	---	---	33 / 38	35 / 40	7 / 23,800
HKR-10*, HKR-10C*	43 / 49	45 / 50	---	---	45 / 51	50 / 60	9.5 / 32,400
GPC1330H41**	2.3	---	---	---	--	--	---
HKR-05*, HKR-05C*	21 / 25	25 / 25	---	---	24 / 27	30 / 30	4.75 / 16,200
HKR-08*, HKR-08C*	32 / 36	35 / 40	---	---	34 / 39	40 / 40	7 / 23,800
HKR-10*, HKR-10C*	43 / 49	45 / 50	---	---	45 / 52	60 / 60	9.5 / 32,400
HKP-15C*	43 / 49	45 / 50	21 / 25	25 / 25	67 / 77	70 / 80	14.25 / 48,600
GPC1336H41**	2.3	---	---	---	--	--	---
HKR-05*, HKR-05C*	21 / 25	25 / 25	---	---	24 / 27	40 / 40	4.75 / 16,200
HKR-08*, HKR-08C*	32 / 36	35 / 40	---	---	34 / 39	40 / 40	7 / 23,800
HKR-10*, HKR-10C*	43 / 49	45 / 50	---	---	45 / 52	60 / 60	9.5 / 32,400
HKP-15C*	43 / 49	45 / 50	21 / 25	25 / 25	67 / 77	70 / 80	14.25 / 48,600
GPC1342H41**	3.6	---	---	---	--	--	---
HKR-05*, HKR-05C*	21 / 25	25 / 25	---	---	27	40 / 40	4.75 / 16,200
HKR-08*, HKR-08C*	32 / 36	35 / 40	---	---	34 / 39	40 / 40	7 / 23,800
HKR-10*, HKR-10C*	43 / 49	45 / 50	---	---	46 / 52	60 / 60	9.5 / 32,400
HKP-15C*	43 / 49	45 / 50	21 / 25	25 / 25	68 / 78	70 / 80	14.25 / 48,600
HKP-20C	43 / 49	45 / 50	43 / 49	45 / 50	90 / 103	90 / 110	19.0 / 64,800
GPC1349H41**	3.6	---	---	---	--	--	---
HKR-05*, HKR-05C*	21 / 25	25 / 25	---	---	29	45	4.75 / 16,200
HKR-08*, HKR-08C*	32 / 36	35 / 40	---	---	34 / 40	45	7 / 23,800
HKR-10*, HKR-10C*	43 / 49	45 / 50	---	---	46 / 53	60 / 60	9.5 / 32,400
HKP-15C	43 / 49	45 / 50	21 / 25	25 / 25	68 / 78	70 / 80	14.25 / 48,600
HKP-20C	43 / 49	45 / 50	43 / 49	45 / 50	90 / 103	90 / 110	19.0 / 64,800
GPC1360H41**	7.5	---	---	---	--	--	---
HKR-05*, HKR-05C*	21 / 25	25 / 25	---	---	40	60	4.75 / 16,200
HKR-08*, HKR-08C*	32 / 36	35 / 40	---	---	40	60	7 / 23,800
HKR-10*, HKR-10C*	43 / 49	45 / 50	---	---	48 / 54	60 / 60	9.5 / 32,400
HKP-15C	43 / 49	45 / 50	21 / 25	25 / 25	70 / 80	80 / 90	14.25 / 48,600
HKP-20C	43 / 49	45 / 50	43 / 49	45 / 50	92 / 105	100 / 110	19.0 / 64,800

¹ Minimum Circuit Ampacity @ 208 / 240 V

² Maximum Overcurrent Protection Device @ 208 / 240 V

* Revision level that may or may not be designated

C Circuit breaker option

^ Heat Kit requires three-phase power supply

NOTE: HKP-15C* and HKP-20C* replace HKR-15C and HKR-20C respectively to meet new UL1995 requirements.

ELECTRICAL DATA FOR APH15M PACKAGED UNITS (BLOWER ONLY, HEAT MODE)

MODEL AND HEAT KIT USAGE	CIRCUIT #1		CIRCUIT #2		SINGLE-POINT KIT		ACTUAL kW / BTU@ 240V
	MCA ¹	MOP ²	MCA ¹	MOP ²	MCA ¹	MOP ²	
APH1524M41A*	5.4	---	---	---	--	--	---
HKR-05*, HKR-05C*	21 / 25	25 / 25	---	---	46	50	4.75 / 16,200
HKR-08*, HKR-08C*	32 / 36	35 / 40	---	---	58	60	7.0 / 23,800
HKR-10*, HKR-10C*	43 / 49	45 / 50	---	---	71	80	9.5 / 32,400
APH1530M41A*	5.4	---	---	---	--	--	---
HKR-05*, HKR-05C*	21 / 25	25 / 25	---	---	48	50	4.75 / 16,200
HKR-08*, HKR-08C*	32 / 36	35 / 40	---	---	60	60	7.0 / 23,800
HKR-10*, HKR-10C*	43 / 49	45 / 50	---	---	73	80	9.5 / 32,400
HKP-15C*	43 / 49	45 / 50	21 / 25	25 / 25	97	100	14.25 / 48,600
APH1536M41A*	5.4	---	---	---	--	--	---
HKR-05*, HKR-05C*	21 / 25	25 / 25	---	---	51	60	4.75 / 16,200
HKR-08*, HKR-08C*	32 / 36	35 / 40	---	---	63	70	7.0 / 23,800
HKR-10*, HKR-10C*	43 / 49	45 / 50	---	---	76	80	9.5 / 32,400
HKP-15C*	43 / 49	45 / 50	21 / 25	25 / 25	101	110	14.25 / 48,600
APH1543M41A*	3.6	---	---	---	--	--	---
HKR-05*, HKR-05C*	21 / 25	25 / 25	---	---	51	60	4.75 / 16,200
HKR-08*, HKR-08C*	32 / 36	35 / 40	---	---	63	70	7.0 / 23,800
HKR-10*, HKR-10C*	43 / 49	45 / 50	---	---	76	80	9.5 / 32,400
HKP-15C*	43 / 49	45 / 50	21 / 25	25 / 25	101	110	14.25 / 48,600
APH1549M41A*	3.6	---	---	---	--	--	---
HKR-05*, HKR-05C*	21 / 25	25 / 25	---	---	56	70	4.75 / 16,200
HKR-08*, HKR-08C*	32 / 36	35 / 40	---	---	67	80	7.00 / 23,800
HKR-10*, HKR-10C*	43 / 49	45 / 50	---	---	80	90	9.50 / 32,400
HKP-15C*	43 / 49	45 / 50	21 / 25	25 / 25	105	110	14.25 / 48,600
HKP-20C*	43 / 49	45 / 50	43 / 49	45 / 50	132	150	19.0 / 64,800
APH1560M41A*	8.8	---	---	---	--	--	---
HKR-05*, HKR-05C*	21 / 25	25 / 25	---	---	67	80	4.75 / 16,200
HKR-08*, HKR-08C*	32 / 36	35 / 40	---	---	79	90	7.0 / 23,800
HKR-10*, HKR-10C*	43 / 49	45 / 50	---	---	92	100	9.5 / 32,400
HKP-15C*	43 / 49	45 / 50	21 / 25	25 / 25	116	125	14.25 / 48,600
HKP-20C*	43 / 49	45 / 50	43 / 49	45 / 50	144	150	19.0 / 64,800

¹ Minimum Circuit Ampacity @ 208 / 240 V

² Maximum Overcurrent Protection Device @ 208 / 240 V

* Revision level that may or may not be designated

C Circuit breaker option

^ Heat Kit requires three-phase power supply

NOTE: HKP-15C* and HKP-20C* replace HKR-15C and HKR-20C respectively to meet new UL1995 requirements.

ELECTRICAL DATA FOR GPH14H PACKAGED UNITS (BLOWER ONLY, HEAT MODE)

MODEL AND HEAT KIT USAGE	CIRCUIT #1		CIRCUIT #2		SINGLE-POINT KIT		ACTUAL kW / BTU@ 240V
	MCA ¹	MOP ²	MCA ¹	MOP ²	MCA ¹	MOP ²	
GPH1424H41A*	1.9	---	---	---	--	--	---
HKR-05*, HKR-05C*	21 / 25	25 / 25	---	---	43	50	4.75 / 16,200
HKR-08*, HKR-08C*	32 / 36	35 / 40	---	---	55	60	7 / 23,800
HKR-10*, HKR-10C*	43 / 49	45 / 50	---	---	68	70	9.5 / 32,400
GPH1430H41A*	2.3	---	---	---	--	--	---
HKR-05*, HKR-05C*	21 / 25	25 / 25	---	---	45	50	4.75 / 16,200
HKR-08*, HKR-08C*	32 / 36	35 / 40	---	---	57	60	7 / 23,800
HKR-10*, HKR-10C*	43 / 49	45 / 50	---	---	70	80	9.5 / 32,400
HKP-15C*	43 / 49	45 / 50	21 / 25	25 / 25	95	100	14.25 / 48,600
GPH1436H41A*	2.3	---	---	---	--	--	---
HKR-05*, HKR-05C*	21 / 25	25 / 25	---	---	49	60	4.75 / 16,200
HKR-08*, HKR-08C*	32 / 36	35 / 40	---	---	61	70	7 / 23,800
HKR-10*, HKR-10C*	43 / 49	45 / 50	---	---	74	80	9.5 / 32,400
HKP-15C*	43 / 49	45 / 50	21 / 25	25 / 25	98	100	14.25 / 48,600
GPH1442H41A*	3.6	---	---	---	--	--	---
HKR-05*, HKR-05C*	21 / 25	25 / 25	---	---	51	60	4.75 / 16,200
HKR-08*, HKR-08C*	32 / 36	35 / 40	---	---	63	70	7 / 23,800
HKR-10*, HKR-10C*	43 / 49	45 / 50	---	---	76	80	9.5 / 32,400
HKP-15C*	43 / 49	45 / 50	21 / 25	25 / 25	101	110	14.25 / 48,600
HKP-20C*	43 / 49	45 / 50	43 / 49	45 / 50	128	150	19.0 / 64,800
GPH1348H41A*	3.6	---	---	---	--	--	---
HKR-05*, HKR-05C*	21 / 25	25 / 25	---	---	54	60	4.75 / 16,200
HKR-08*, HKR-08C*	32 / 36	35 / 40	---	---	66	70	7 / 23,800
HKR-10*, HKR-10C*	43 / 49	45 / 50	---	---	79	80	9.5 / 32,400
HKP-15C*	43 / 49	45 / 50	21 / 25	25 / 25	103	110	14.25 / 48,600
HKP-20C*	43 / 49	45 / 50	43 / 49	45 / 50	131	150	19.0 / 64,800
GPH1460H41A*	7.5	---	---	---	--	--	---
HKR-05*, HKR-05C*	21 / 25	25 / 25	---	---	62	80	4.75 / 16,200
HKR-08*, HKR-08C*	32 / 36	35 / 40	---	---	74	90	7 / 23,800
HKR-10*, HKR-10C*	43 / 49	45 / 50	---	---	87	100	9.5 / 32,400
HKP-15C*	43 / 49	45 / 50	21 / 25	25 / 25	112	125	14.25 / 48,600
HKP-20C*	43 / 49	45 / 50	43 / 49	45 / 50	139	150	19.0 / 64,800

¹ Minimum Circuit Ampacity @ 208 / 240 V

² Maximum Overcurrent Protection Device @ 208 / 240 V

* Revision level that may or may not be designated

C Circuit breaker option

^ Heat Kit requires three-phase power supply

NOTE: HKP-15C* and HKP-20C* replace HKR-15C and HKR-20C respectively to meet new UL1995 requirements.

ELECTRICAL DATA FOR GPH13M PACKAGED UNITS (BLOWER ONLY, HEAT MODE)

MODEL AND HEAT KIT USAGE	CIRCUIT #1		CIRCUIT #2		SINGLE-POINT KIT		ACTUAL kW / BTU@ 240V
	MCA ¹	MOP ²	MCA ¹	MOP ²	MCA ¹	MOP ²	
GPH1324M41**	1.9	---	---	---	--	--	---
HKR-05*, HKR-05C*	21 / 25	25 / 25	---	---	44	50	4.75 / 16,200
HKR-08*, HKR-08C*	32 / 36	35 / 40	---	---	55	60	7.0 / 23,800
HKR-10*, HKR-10C*	43 / 49	45 / 50	---	---	68	70	9.5 / 32,400
GPH1330M41**	1.9	---	---	---	--	--	---
HKR-05*, HKR-05C*	21 / 25	25 / 25	---	---	48	50	4.75 / 16,200
HKR-08*, HKR-08C*	32 / 36	35 / 40	---	---	59	60	7.0 / 23,800
HKR-10*, HKR-10C*	43 / 49	45 / 50	---	---	72	80	9.5 / 32,400
HKP-15C*	43 / 49	45 / 50	21 / 25	25 / 25	97	100	14.25 / 48,600
GPH1336M41**	1.9	---	---	---	--	--	---
HKR-05*, HKR-05C*	21 / 25	25 / 25	---	---	50	60	4.75 / 16,200
HKR-08*, HKR-08C*	32 / 36	35 / 40	---	---	62	70	7.0 / 23,800
HKR-10*, HKR-10C*	43 / 49	45 / 50	---	---	75	80	9.5 / 32,400
HKP-15C*	43 / 49	45 / 50	21 / 25	25 / 25	100	100	14.25 / 48,600
GPH1342M41**	3.6	---	---	---	--	--	---
HKR-05*, HKR-05C*	21 / 25	25 / 25	---	---	52	60	4.75 / 16,200
HKR-08*, HKR-08C*	32 / 36	35 / 40	---	---	63	70	7.0 / 23,800
HKR-10*, HKR-10C*	43 / 49	45 / 50	---	---	76	80	9.5 / 32,400
HKP-15C*	43 / 49	45 / 50	21 / 25	25 / 25	101	110	14.25 / 48,600
GPH1348M41**	7.3	---	---	---	--	--	---
HKR-05*, HKR-05C*	21 / 25	25 / 25	---	---	59	70	4.75 / 16,200
HKR-08*, HKR-08C*	32 / 36	35 / 40	---	---	71	80	7.0 / 23,800
HKR-10*, HKR-10C*	43 / 49	45 / 50	---	---	84	90	9.5 / 32,400
HKP-15C*	43 / 49	45 / 50	21 / 25	25 / 25	109	110	14.25 / 48,600
HKP-20C*	43 / 49	45 / 50	43 / 49	45 / 50	136	150	19.0 / 64,800
GPH1360M41**	9.5	---	---	---	--	--	---
HKR-05*, HKR-05C*	21 / 25	25 / 25	---	---	67	80	4.75 / 16,200
HKR-08*, HKR-08C*	32 / 36	35 / 40	---	---	78	90	7.0 / 23,800
HKR-10*, HKR-10C*	43 / 49	45 / 50	---	---	91	100	9.5 / 32,400
HKP-15C*	43 / 49	45 / 50	21 / 25	25 / 25	116	125	14.25 / 48,600
HKP-20C*	43 / 49	45 / 50	43 / 49	45 / 50	144	150	19.0 / 64,800

¹ Minimum Circuit Ampacity @ 208 / 240 V

² Maximum Overcurrent Protection Device @ 208 / 240 V

* Revision level that may or may not be designated

C Circuit breaker option

^ Heat Kit requires three-phase power supply

NOTE: HKP-15C* and HKP-20C* replace HKR-15C and HKR-20C respectively to meet new UL1995 requirements.

ELECTRICAL DATA FOR GPH13H PACKAGED UNITS (BLOWER ONLY, HEAT MODE)

MODEL AND HEAT KIT USAGE	CIRCUIT #1		CIRCUIT #2		SINGLE-POINT KIT		ACTUAL kW / BTU@ 240V
	MCA ¹	MOP ²	MCA ¹	MOP ²	MCA ¹	MOP ²	
GPH1324H41**	1.9	---	---	---	--	--	---
HKR-05*, HKR-05C*	21 / 25	25 / 25	---	---	43	50	4.75 / 16,200
HKR-08*, HKR-08C*	32 / 36	35 / 40	---	---	55	60	7 / 23,800
HKR-10*, HKR-10C*	43 / 49	45 / 50	---	---	68	70	9.5 / 32,400
GPH1330H41**	2.3	---	---	---	--	--	---
HKR-05*, HKR-05C*	21 / 25	25 / 25	--	--	45	50	4.75 / 16,200
HKR-08*, HKR-08C*	32 / 36	35 / 40	--	--	57	60	7 / 23,800
HKR-10*, HKR-10C*	43 / 49	45 / 50	--	--	70	80	9.5 / 32,400
HKP-15C*	43 / 49	45 / 50	21 / 25	25 / 25	95	100	14.25 / 48,600
GPH1336H41**	2.3	---	---	---	--	--	---
HKR-05*, HKR-05C*	21 / 25	25 / 25	---	---	49	60	4.75 / 16,200
HKR-08*, HKR-08C*	32 / 36	35 / 40	---	---	61	70	7 / 23,800
HKR-10*, HKR-10C*	43 / 49	45 / 50	---	---	74	80	9.5 / 32,400
HKP-15C*	43 / 49	45 / 50	21 / 25	25 / 25	98	100	14.25 / 48,600
GPH1342H41**	3.6	---	---	---	--	--	---
HKR-05*, HKR-05C*	21 / 25	25 / 25	--	--	51	60	4.75 / 16,200
HKR-08*, HKR-08C*	32 / 36	35 / 40	--	--	63	70	7 / 23,800
HKR-10*, HKR-10C*	43 / 49	45 / 50	--	--	76	80	9.5 / 32,400
HKP-15C*	43 / 49	45 / 50	21 / 25	25 / 25	101	110	14.25 / 48,600
HKP-20C*	43 / 49	45 / 50	43 / 49	45 / 50	128	150	19.0 / 64,800
GPH1348H41**	3.6	---	---	---	--	--	---
HKR-05*, HKR-05C*	21 / 25	25 / 25	---	---	54	60	4.75 / 16,200
HKR-08*, HKR-08C*	32 / 36	35 / 40	---	---	66	70	7 / 23,800
HKR-10*, HKR-10C*	43 / 49	45 / 50	---	---	79	80	9.5 / 32,400
HKP-15C*	43 / 49	45 / 50	21 / 25	25 / 25	103	110	14.25 / 48,600
HKP-20C*	43 / 49	45 / 50	43 / 49	45 / 50	131	150	19.0 / 64,800
GPH1360H41**	7.5	---	---	---	--	--	---
HKR-05*, HKR-05C*	21 / 25	25 / 25	---	---	65	80	4.75 / 16,200
HKR-08*, HKR-08C*	32 / 36	35 / 40	---	---	77	90	7 / 23,800
HKR-10*, HKR-10C*	43 / 49	45 / 50	---	---	90	100	9.5 / 32,400
HKP-15C*	43 / 49	45 / 50	21 / 25	25 / 25	114	125	14.25 / 48,600
HKP-20C*	43 / 49	45 / 50	43 / 49	45 / 50	142	150	19.0 / 64,800

¹ Minimum Circuit Ampacity @ 208 / 240 V

² Maximum Overcurrent Protection Device @ 208 / 240 V

* Revision level that may or may not be designated

C Circuit breaker option

^ Heat Kit requires three-phase power supply

NOTE: HKP-15C* and HKP-20C* replace HKR-15C and HKR-20C respectively to meet new UL1995 requirements.