

Weekly FX Charts Newsletter

October 1, 2018

The Weekly FX Charts Newsletter provides Cornelius Luca's trade ideas, model signals, and absolute charts

Disclaimer © 2018 Luca Global Markets, LLC (LGM, LLC).

All rights reserved. This content is provided as general information only and does not constitute investment advice or a representation that any investment, security or other product is suitable for any person. This content reflects the opinions only of the author and cannot be interpreted as advice.

This content is the intellectual property of Cornelius Luca. Any copying, distribution or redistribution of this content is expressly prohibited without the prior written consent of Cornelius Luca.

Cornelius Luca shall not be liable for any errors in the content, or for any actions taken in reliance thereon.

Luca Global Markets, LLC

Weekly Charting Newsletter October 1, 2018



Trade Ideas

- Majors: Long USDJPY *while above* the 5-day exponential moving average
- Commodity dollars: Short USDCAD *while below* the 5-day exponential moving average
- Crosses: Long GBPJPY *while above* the 5-day exponential moving average
- Asia: Long USDINR *while above* its 5-day exponential moving average
- Latam: Short USDMXN *while below* its 5-day exponential moving average
- Eastern Europe: Short USDRUR *while below* the 5-day exponential moving average
- Cryptocurrency: Long bitcoin *while above* the 21-day exponential moving average

G10 FX Models – Daily & Weekly

	FX	Daily Model	since	Daily Bias (> or < 21-day EMA)	Daily Risk	Weekly Model	since	Weekly Bias (> or < 21-week EMA)	Weekly Risk
Majors	EUR/USD	S	26-Sep	slightly bearish	slightly bearish	S	26-Sep	slightly bearish	slightly bearish
	GBP/USD	L	1-Oct	sideways	neutral	L	1-Oct	slightly bearish	slightly bullish
	AUD/USD	S	1-Oct	slightly bearish	slightly bearish	S	26-Sep	bearish	slightly bearish
	NZD/USD	S	27-Sep	slightly bearish	slightly bearish	S	26-Sep	bearish	slightly bearish
	USD/JPY	L	27-Sep	bullish	bullish	L	7-Sep	bullish	bullish
	USD/CHF	L	24-Sep	slightly bullish	bullish	S	13-Sep	slightly bullish	slightly bullish
	USD/CAD	S	28-Sep	bearish	bearish	S	13-Sep	bearish	bearish
Crosses	EUR/JPY	L	1-Oct	slightly bullish	slightly bullish	L	13-Sep	slightly bullish	slightly bullish
	EUR/GBP	S	1-Oct	slightly bearish	slightly bearish	S	26-Sep	sideways	neutral
	EUR/CHF	L	24-Sep	slightly bullish	slightly bullish	L	17-Sep	slightly bearish	slightly bullish
	GBP/JPY	L	1-Oct	bullish	bullish	L	24-Aug	bullish	bullish

Source: Proprietary Luca Global Markets, LLC Model

FX Models – Daily & Weekly Emerging Markets

	FX	Daily Model	since	Daily Bias (> or < 21-day EMA)	Daily Risk	Weekly Model	since	Weekly Bias (> or < 21-week EMA)	Weekly Risk
<i>LatAm</i>	USD/MXN	S	26-Sep	slightly bearish	slightly bearish	S	14-Sep	slightly bearish	slightly bearish
	USD/BRL	S	1-Oct	slightly bearish	neutral	S	17-Sep	bullish	slightly bullish
	USD/CLP	S	25-Sep	bearish	slightly bearish	S	21-Sep	slightly bullish	slightly bearish
	USD/COP	L	1-Oct	slightly bearish	slightly bullish	L	1-Oct	slightly bullish	slightly bullish
<i>Asia</i>	USD/CNH	L	1-Oct	slightly bullish	slightly bullish	L	26-Sep	bullish	slightly bullish
	USD/INR	L	1-Oct	bullish	bullish	L	30-Jul	bullish	bullish
	USD/TWD	L	1-Oct	slightly bearish	slightly bullish	S	14-Sep	slightly bullish	slightly bearish
	USD/KRW	S	25-Sep	slightly bearish	slightly bearish	S	14-Sep	slightly bullish	slightly bearish
	USD/MYR	L	1-Oct	bullish	slightly bullish	L	17-Sep	bullish	slightly bullish
	USD/SGD	L	1-Oct	slightly bullish	slightly bullish	L	1-Oct	bullish	slightly bullish
<i>Eastern Europe</i>	USD/RUB	L	1-Oct	bearish	bearish	S	13-Sep	bullish	slightly bearish
	USD/PLN	L	27-Sep	slightly bullish	slightly bullish	L	27-Sep	slightly bullish	slightly bullish
	USD/CZK	L	26-Sep	slightly bullish	slightly bullish	L	26-Sep	slightly bullish	slightly bullish
	USD/RON	L	26-Sep	slightly bullish	slightly bullish	L	26-Sep	slightly bullish	slightly bullish
	USD/HUF	L	26-Sep	slightly bullish	slightly bullish	L	26-Sep	slightly bullish	slightly bullish
	USD/TRY	S	1-Oct	slightly bearish	slightly bearish	S	27-Sep	bullish	slightly bearish
<i>Crypto</i>	Bitcoin	L	26-Sep	slightly bullish	slightly bullish	L	26-Sep	slightly bearish	slightly bullish

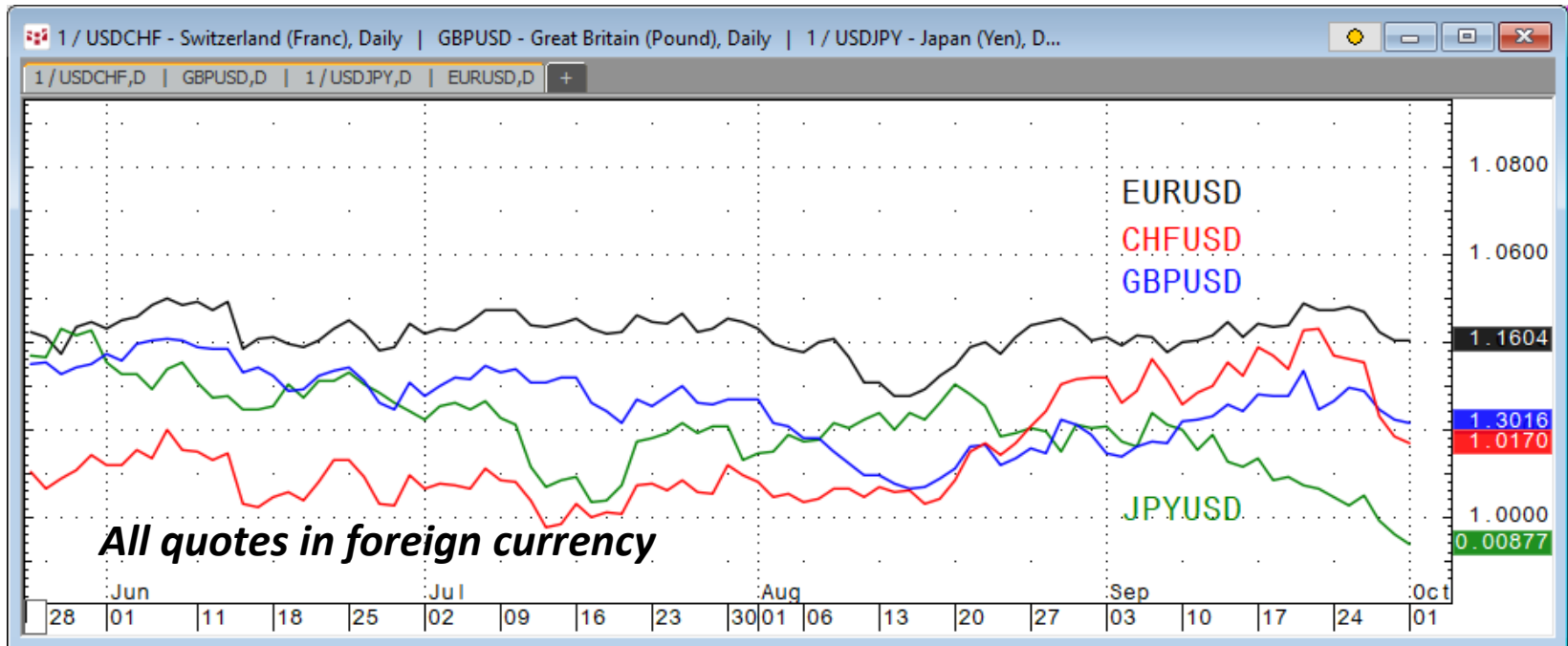
Source: Proprietary Luca Global Markets, LLC Model

FX Majors Trade Idea

Strongest: EURUSD

Weakest: JPYUSD

Trade idea: Long USDJPY while above its 5-day EMA



CQG Inc. © 2018 All rights reserved worldwide. <http://www.cqg.com>

Mon Oct 01 2018 08:21:42, CQG 18.12.8080

FX Majors Trade Idea

Comment:

Long USDJPY while above its 5-day EMA

- USDJPY extended its uptrend to an 11-month high
- It traded above both its rising & divergent 5- & 21-day EMAs
- Initial resistance: 114.37
- Further resistance: 114.74, 115.11 & 114.71
- Immediate support: 113.40
- Further support: 112.33, 118.83 & 110.37
- Fast stochastics: bullish
- MACD: bullish



CQG Inc. © 2018 All rights reserved worldwide. <http://www.cqg.com>

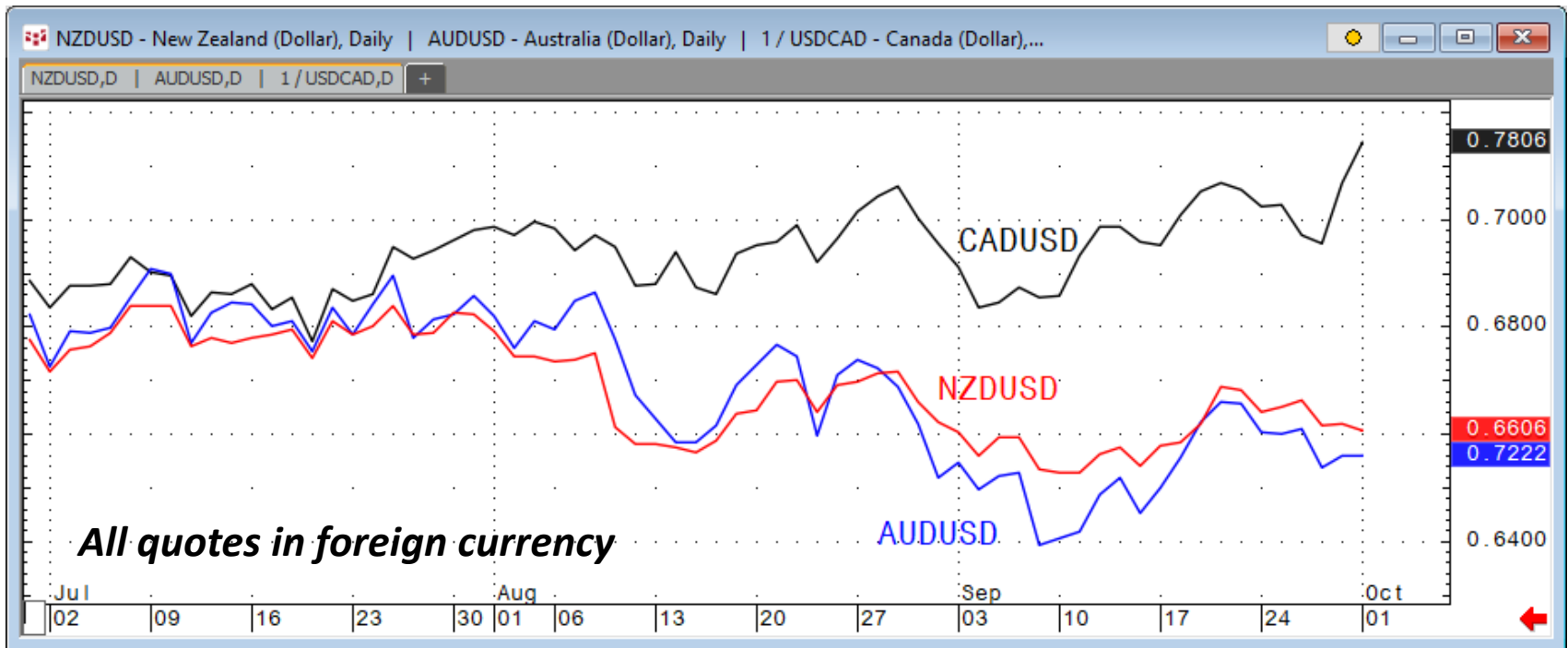
Mon Oct 01 2018 08:34:09, CQG 18.12.8080

FX Commodity Dollars Trade Idea

Strongest: CADUSD

Weakest: AUDUSD

Trade ideas: Short USDCAD while below the 5-day EMA



CQG Inc. © 2018 All rights reserved worldwide. <http://www.cqg.com>

Mon Oct 01 2018 08:22:18, CQG 18.12.8080

FX Commodity Dollars Trade Idea

Comment:

Short USDCAD while below the 5-day EMA

- USDCAD sank to a 4 ½-month low following the post-Nafta treaty with Canada
- It's testing the bottom of its declining channel, while getting close to the bottom of its long-term rising channel
- It fell below both its declining 5- & 21-day EMAs
- Immediate support: 1.2729
- Further support: 1.2724, 1.2653 & 1.2527
- Initial resistance: 1.2885
- Further resistance: 1.2955 & 1.3080
- Fast stochastics: bearish
- MACD: bearish

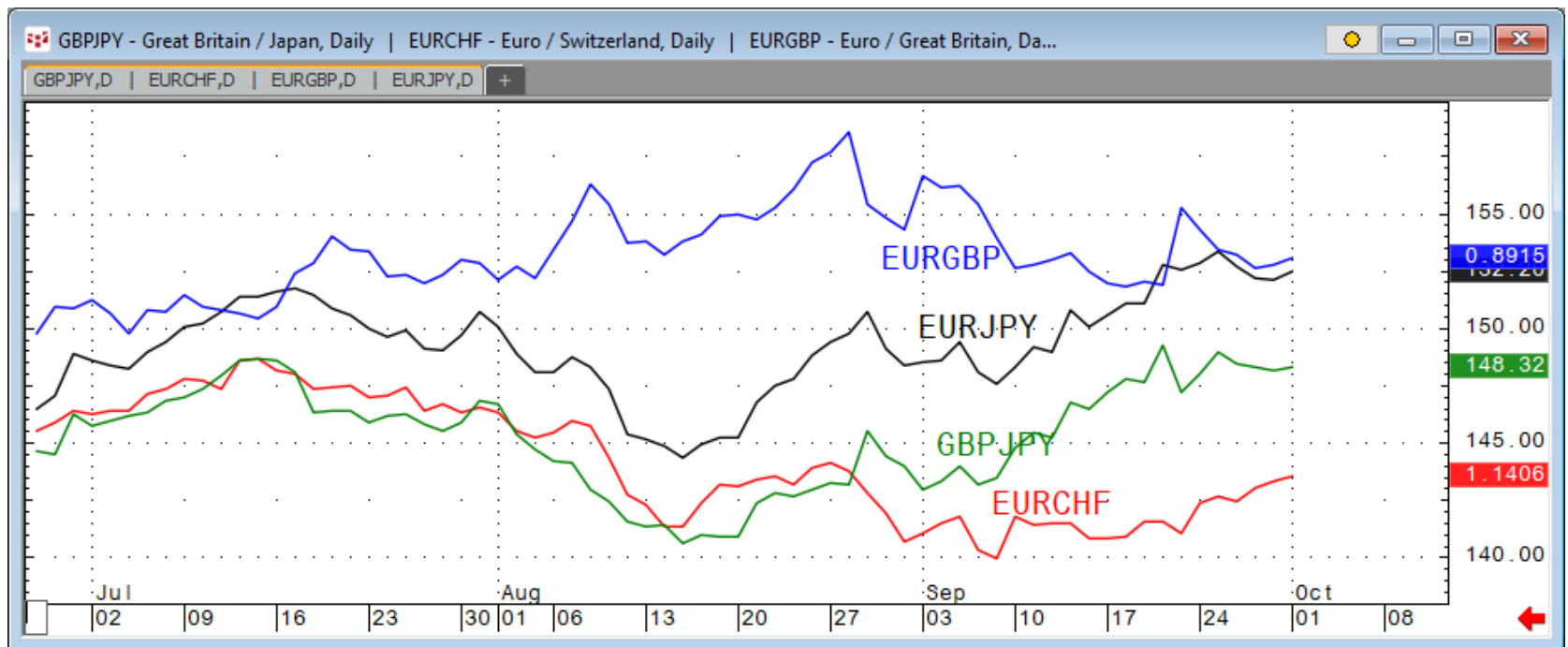


FX Crosses Trade Idea

Strongest: EURGBP

Weakest: EURCHF (but rising)

Trade idea: Long GBPJPY while above the 5-day EMA



CQG Inc. © 2018 All rights reserved worldwide. <http://www.cqg.com>

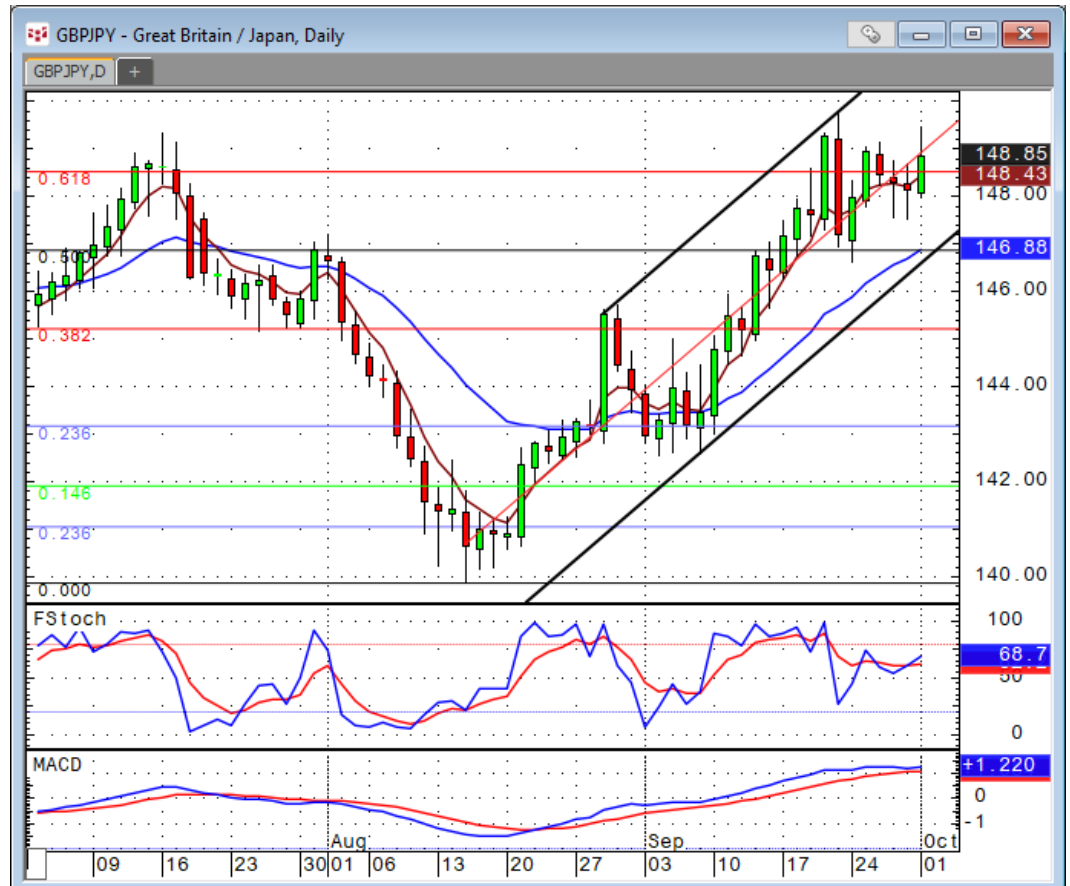
Mon Oct 01 2018 08:22:53, CQG 18.12.8080

FX Crosses Trade Idea

Comment:

Long GBPJPY while above the 5-day EMA

- GBPJPY remains strong near a 4-month high
- It also trades above both its rising & divergent 5- & 21-day EMAs, but the 5-day EMA is acting more like a magnet than a support
- Initial resistance: 149.76
- Further resistance: 150.57 & 151.83
- Immediate support: 147.50
- Further support: 146.60, 145.20, & 144.50
- Fast stochastics: bullish
- MACD: bullish



CQG Inc. © 2018 All rights reserved worldwide. <http://www.cqg.com>

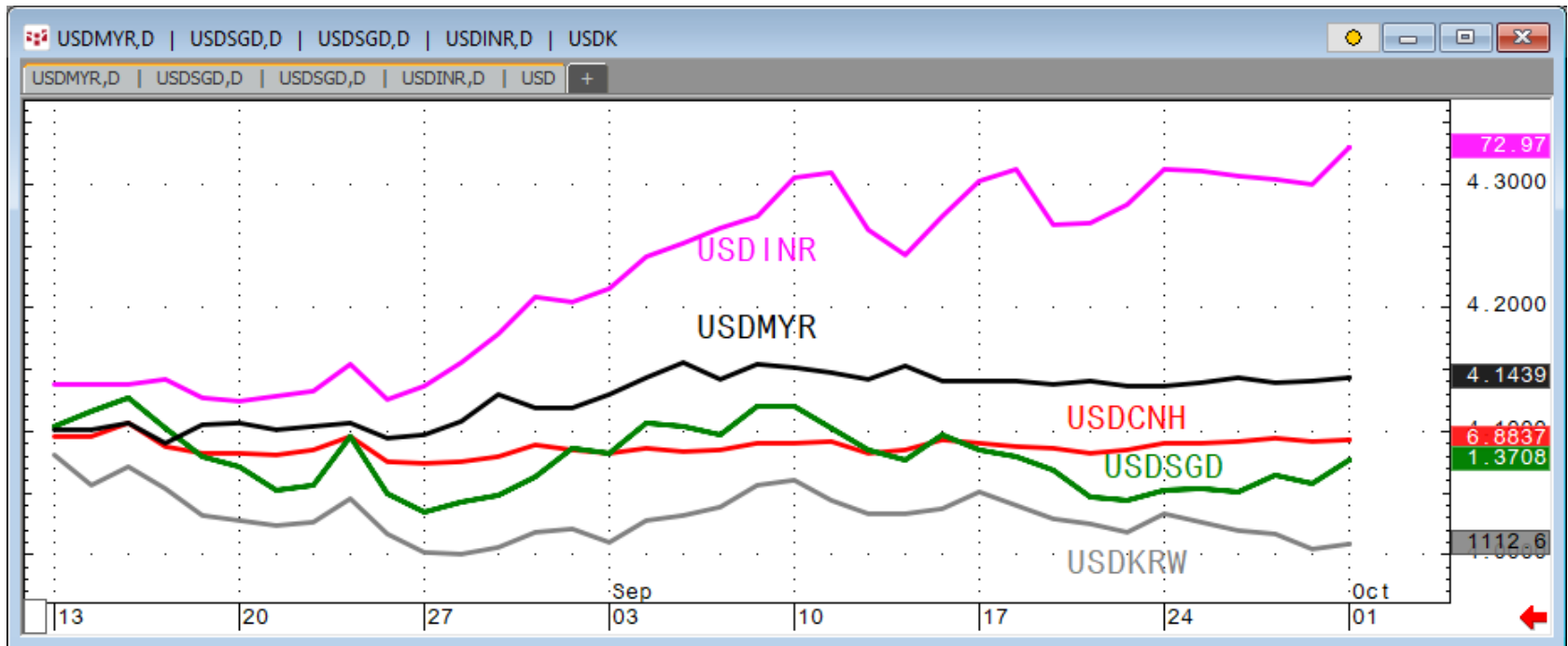
Mon Oct 01 2018 09:13:18, CQG 18.12.8080

FX Asia Trade Idea

Strongest: USDINR

Weakest: USDKRW

Trade idea: Long USDINR while above its 5-day EMA



CQG Inc. © 2018 All rights reserved worldwide. <http://www.cqg.com>

Mon Oct 01 2018 08:23:35, CQG 18.12.8080

FX Asia Trade Idea

Comment:

Long USDINR while above its 5-day EMA

- USDINR remains strong near record highs
- Its 5-day EMA supports the bullish path, but it acts more like a magnet than a support
- Initial resistance: 73.00
- Further resistance: 73.90, 74.50 & 75.34
- Immediate support: 72.30
- Further support: 71.75, 70.71 & 69.69
- Fast stochastics: bullish
- MACD: slightly bearish >0



CQG Inc. © 2018 All rights reserved worldwide. <http://www.cqg.com>

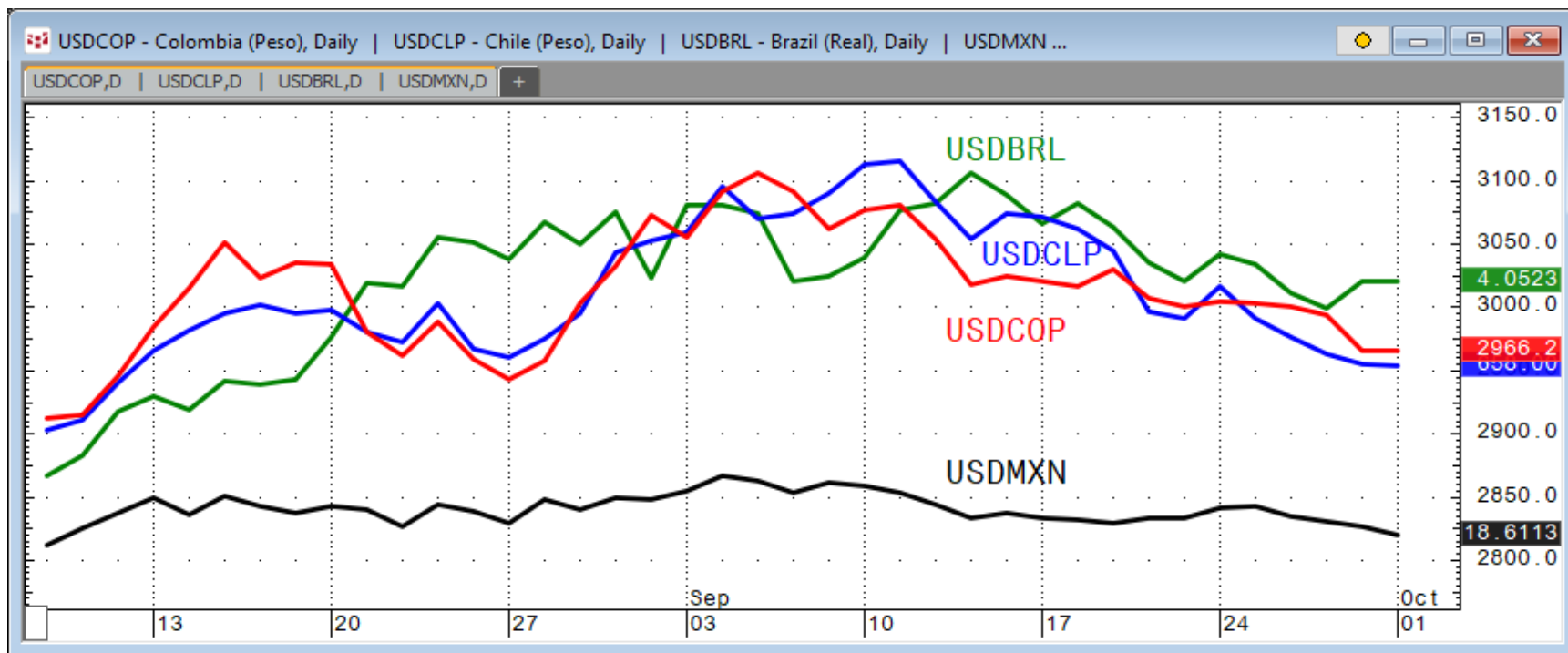
10/01/2018 09:17:59, CQG 18.12.8080

FX Latam Trade Idea

Strongest: USDBRL

Weakest: USDMXN

Trade idea: Short USDMXN while below its 5-day EMA



CQG Inc. © 2018 All rights reserved worldwide. <http://www.cqg.com>

Mon Oct 01 2018 08:24:02, CQG 18.12.8080

FX Latam Trade Idea

Comment:

Short USDMXN while below its 5-day EMA

- USDMXN is heavy at a near 2-month low because of the optimism surrounding the post-Nafta era
- It pierced the trendline rising since 4/17
- USDMXN trades below both its declining 5- & 21-day EMAs
- Immediate support: 18.3900
- Further support: 17.9250
- Initial resistance: 18.7720
- Further resistance: 19.0040, 19.0720 & 19.3810
- Fast stochastics: bearish
- MACD: slightly bearish



CQG Inc. © 2018 All rights reserved worldwide. <http://www.cqg.com>

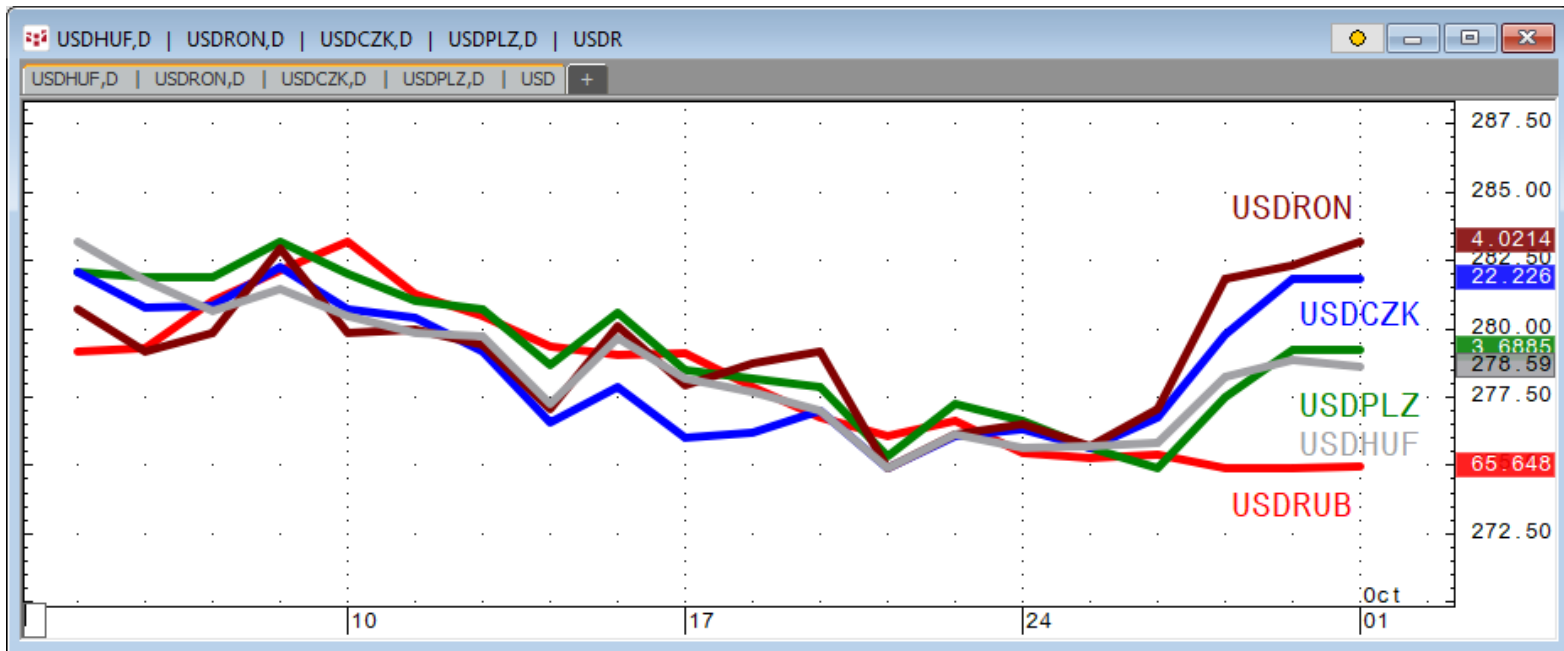
Mon Oct 01 2018 09:25:52, CQG 18.12.8080

FX Eastern Europe Trade Idea

Strongest: USDRON

Weakest: USDRUB

Trade idea: Short USDRUR while below the 5-day EMA



CQG Inc. © 2018 All rights reserved worldwide. <http://www.cqg.com>

Mon Oct 01 2018 08:26:13, CQG 18.12.8080

FX Eastern Europe Trade Idea

Comment:

Short USDRUR while below the 5-day EMA

- USDRUR reversed from a 2 ½ - year high to a near 2-month low
- It trades below both its declining & diverging 5- & 21-day EMAs
- USDRUR is also challenging the support of its rising medium-term channel
- Immediate support: 64.836
- Further support: 63.826 & 63.030
- Initial resistance: 66.127
- Further resistance: 67.069 & 68.446
- Fast stochastics: slightly bullish
- MACD: bearish



CQG Inc. © 2018 All rights reserved worldwide. <http://www.cqg.com>

Mon Oct 01 2018 09:37:41, CQG 18.12.8080

Bitcoin Trade Idea

Comment:

Long Bitcoin while above the 21-day EMA

- Bitcoin remains in a symmetrical triangle within a massive declining triangle
- However, it's been making slightly higher lows since bottoming on 6/18
- Moreover, it managed to claw its way just above its 21-day EMA
- The lack of factors continues to hurt Bitcoin
- Initial resistance: 6,710
- Further resistance: 7,362, 7,800 & 8,205
- Immediate support: 6,236
- Further support: 6,003, 5,846 & 5,240
- Fast stochastics: bullish (overbought)
- MACD: bearish



How to Use the Heat Map

Bias: If the Candle > 21-period EMA = bullish
 If the Candle < 21-period EMA = bearish
 If the Candle around 21-period EMA = sideways

Long or Short	Commodities	Since when		Risk: Bullish or Bearish Candle as of Monday am EST					
		Daily Model	since	Daily Bias (> or < 21-day EMA)	Daily Risk	Weekly Model	since	Weekly Bias (> or < 21-week EMA)	Weekly Risk
Energy	Crude (CLc1)	S	27-Apr	bullish	slightly bullish	L	23-Mar	slightly bearish	slightly bullish
	Brent (LCOc1)	L	21-Apr	slightly bullish	slightly bullish	L	6-Apr	slightly bearish	slightly bullish
	Natural gas (NGc1)	S	23-Apr	bearish	bearish	S	20-Apr	bearish	slightly bearish
	Palm oil (FCPOc1)	L	24-Apr	sideways	neutral	S	20-Apr	slightly bearish	slightly bearish
Metals	Gold (GCc1)	S	24-Apr	bearish	bearish	S	20-Mar	slightly bearish	slightly bearish
	Silver (SIc1)	S	22-Apr	bearish	bearish	S	24-Apr	bearish	bearish
	Platinum (PLc1)	S	20-Apr	bearish	bearish	S	20-Mar	bearish	slightly bullish
	Copper (HGc1)	L	24-Apr	slightly bearish	slightly bullish	S	24-Apr	slightly bearish	slightly bearish
Softs	Coffee (KCN5)	L	24-Apr	sideways	neutral	L	24-Apr	slightly bullish	slightly bullish
	Cocoa (LCCN5)	L	23-Apr	bullish	bullish	L	13-Apr	bullish	bullish
	Soy meal (SMN5)	S	24-Apr	bearish	slightly bearish	S	24-Apr	bearish	slightly bearish
	Wheat (WN5)	S	24-Apr	bearish	slightly bearish	S	24-Apr	bearish	bearish
	Corn (CN5)	S	20-Apr	bearish	bearish	S	6-Apr	bearish	bearish

Source: Proprietary Luca Global Markets, LLC Model

L = long
 S = short