

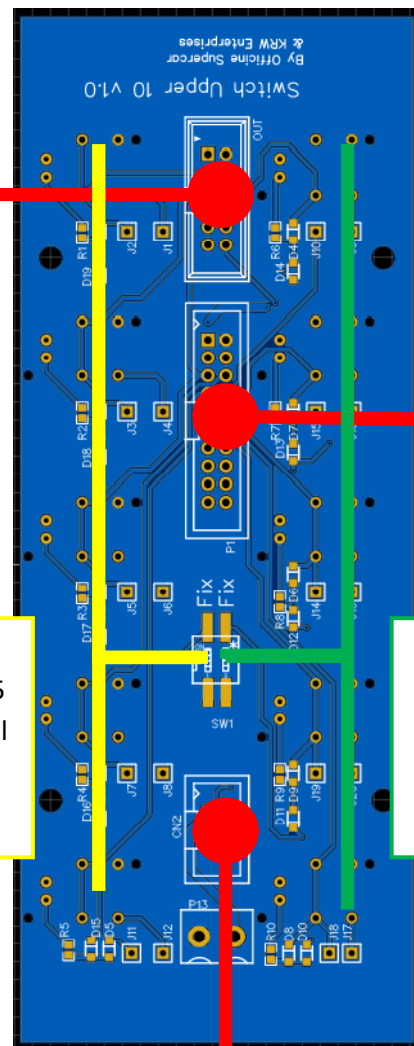
NEG1 > P1

FLAT 20

OUT  
FLAT 12

Each flat cable can be used to power the keyboards.  
Pin 1 - Red = Positive, +12V  
Pin 2 - Gray = Negative, GND  
Every switch is NO to GND

**DO NOT APPLY A POWER LOAD  
TO THE CONTACTS**



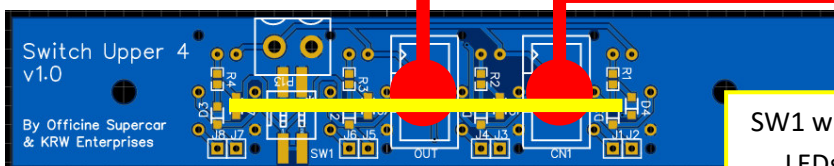
SW1 will turn ON  
switches's LEDs 1-5  
Otherwise LEDs will  
turn on when  
Switch pressed

SW1 will turn ON  
switches's LEDs 6-10  
Otherwise LEDs will  
turn on when Switch  
pressed

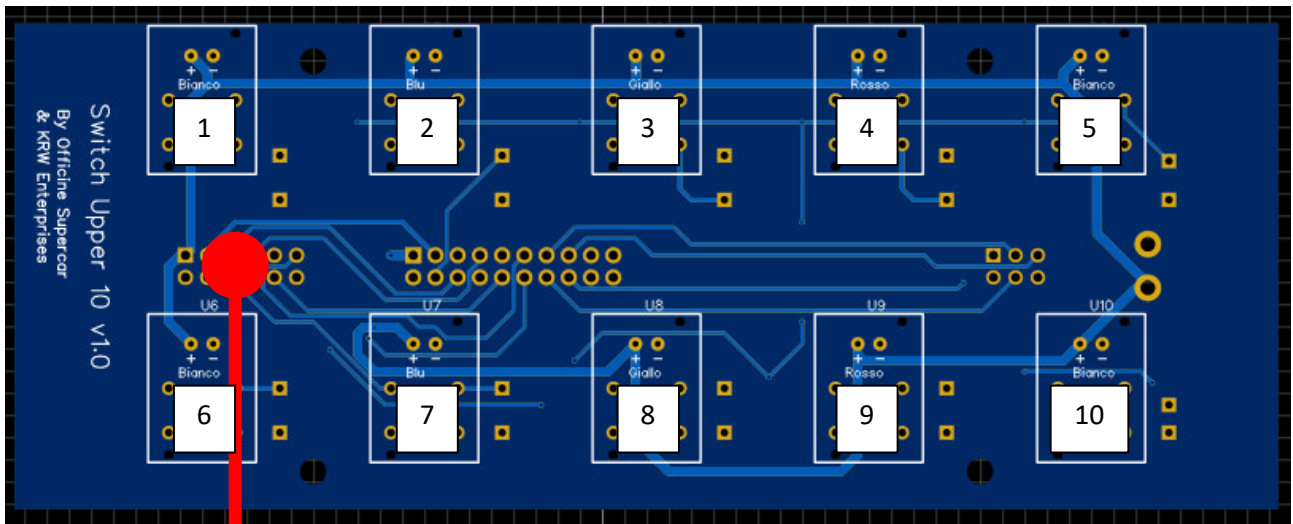
OUT  
FLAT 6

CN2 > CN1

FLAT 6

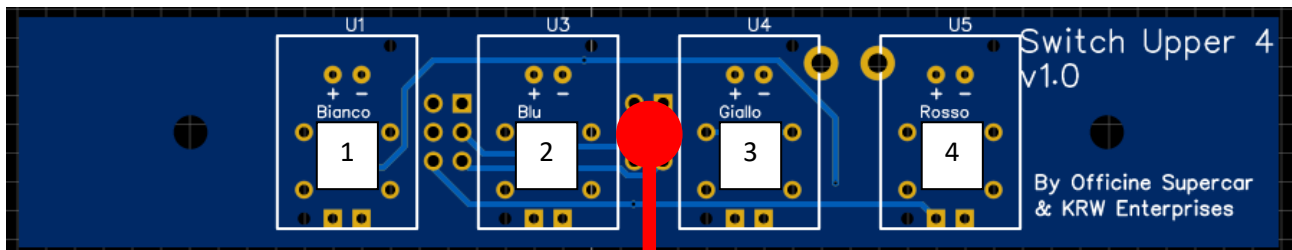


SW1 will turn ON switches's LEDs Otherwise  
LEDs will turn on when Switch pressed



#### OUT - FLAT 12

Pin 1 - Red = Positive, +12V  
 Pin 2 - Gray = Negative, GND  
 Pin 3 - SW1  
 Pin 4 - SW2  
 ..  
 Pin 12 - SW10



#### OUT - FLAT 6

Pin 1 - Red = Positive, +12V  
 Pin 2 - Gray = Negative, GND  
 Pin 3 - SW1  
 Pin 4 - SW2  
 PIN 5 - SW3  
 Pin 6 - SW4