

THE
HORIZON
RESIDENCES
KUALA LUMPUR

2 Stunning Views.
1 Exceptional Address.

一个别致居，两处非凡景。



Not one, but two stunning views. Enjoy the contrast between the dramatic skyline of the Kuala Lumpur City Centre and the lush, calming greens of the Royal Selangor Golf Club.

不只一个，而是两个截然不同的景色，您可以尽情眺望吉隆坡市中心的天际和俯瞰Royal Selangor高尔夫俱乐部的翠绿环境。

Actual view from the 26th floor of The Horizon Residences site.
从The Horizon Residences 建筑场地26楼俯瞰的实景。

KL SKYLINE
吉隆坡天际

RSGC
Royal Selangor Golf Club
Royal Selangor 高尔夫俱乐部





Choice FREEHOLD

特选的永久地契地点



When it comes to luxurious city living, The Horizon Residences is amongst the very finest in Kuala Lumpur.

如果您要享受豪华舒适的城市生活，The Horizon Residences是吉隆坡其中最佳的选择。

The Horizon Residences sits on a choice. FREEHOLD location along Jalan Tun Razak. From here much of the city's prime retail and business areas are within easy walking distance.

The vibrant Bukit Bintang retail area is just a kilometre away. The Kuala Lumpur City Centre and PETRONAS Twin Towers are just 1.7km away. Also, the soon-to-be developed Tun Razak Exchange is only 500m away.

A network of major roads conveniently links The Horizon Residences to the rest of the Klang Valley. The Kuala Lumpur International Airport (KLIA) is easily reached via the MEX Highway.

The Horizon Residences座落在Jalan Tun Razak的特选永久地契地点。市区内首要的零售与商业中心皆近在咫尺。

武吉免登的三个蓬勃零售地区仅离一公里，而吉隆坡市中心和国油双峰塔也仅离1.7公里。即将兴建的敦拉薩國際貿易中心则仅离500米而已。

从The Horizon Residences来往巴生谷各地区的主要道路四通八达，顺畅无阻。同时通过MEX高速大道就可轻易前往吉隆坡国际机场。

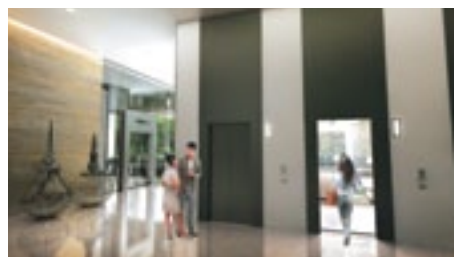


The Horizon Residences is designed by renowned international architects and leading landscape designers to be an oasis from the usual concrete-clad.

From the extensively glazed façade and lovely vertical gardens, to the generous landscaping and extensive facilities and amenities, The Horizon Residences will be a benchmark for modern city living.

The Horizon Residences是由国际著名的建筑师和景观设计师精心打造，是钢筋水泥城市中的绿洲。

从辽阔的釉面外墙和瑰丽的空中垂直花园，到翠绿的园艺美景和许多贴心的设施与设备，The Horizon Residences将成为时尚城市生活的典范。



Distinguished
by Design

独一无二的设计



Much To Enjoy

尽享其趣



The facilities and amenities available at The Horizon Residences can best be described as extensive and pampering to perfectly complement a modern, urban lifestyle.

The Horizon Residences具备应有尽有的设施与设备，以让您尽情享受时尚城市生活的无穷乐趣。



- | | |
|--|--------------------------------|
| 1. 50m Infinity Edge Lap Pool / 50米泳池 | 15. Floating Gym / 水上健身室 |
| 2. Water Feature / 流水景色 | 16. Steam Room / 蒸气室 |
| 3. Timber Deck / 木材甲板 | 17. Sauna / 桑拿室 |
| 4. Sun Loungers / 日光浴躺椅 | 18. Lift Lobby / 电梯厅 |
| 5. Shallow Pool / 浅水池 | 19. Nursery / 托儿所 |
| 6. Floating Sun Loungers / 水上日光浴躺椅 | 20. Convenience Store / 便利商店 |
| 7. Pool Lounge / 池畔休闲区 | 21. Multi-purpose Hall / 多用途礼堂 |
| 8. Bubble Jet Pond with Stepping Stones / 泡沫喷池 | |
| 9. BBQ Area with Trellis / 石道烧烤坑设备 | |
| 10. Children's Pool / 儿童嬉水池 | |
| 11. Children's Playground / 儿童游戏场 | |
| 12. Artificial Turf / 人造草地 | |
| 13. Stepping Stones / 石道 | |
| 14. Feature Trees / 观景树 | |





The Horizon Residences will feature a comprehensive 3-tier security system:-

- All access points and perimeter fences are covered by surveillance cameras/CCTV.
- Proximity access cards will be required at the guardhouse and lift lobby.
- Each unit linked by intercom to the security control room
- 24hr manned security patrols.

The Horizon Residences 备有严密的3层次保安系统:

- 出点和围墙设有监控摄像机/闭路电视
- 电梯大厅和保安入口设有触动进出卡
- 每个单位皆设有与保安监控室联系的对讲机
- 全天候保安巡逻

Peace of Mind

高枕无忧





The Perfect Fit

完美贴心之作

From space-efficient studio units to generously dimensioned penthouses, The Horizon Residences is a perfect fit for anyone who desires the finest in modern city living.

A total of just 335 units are set within two 26-storey towers. All standard units feature 10-foot high ceilings and enjoy optimum views of the surrounding areas, including the lush greens of the Royal Selangor Golf Club and the KLCC.

从节省空间的套房单位到宽敞无比的阁楼，The Horizon Residences 是专门为渴望欢享时尚城市生活的人士精心而建完美贴心之作。

The Horizon Residences 的两栋26层大楼总共只有335个单位。所有标准单位皆具备10尺高天花板，还能饱览周围的景色，包括Royal Selangor 高尔夫俱乐部和KLCC的翠绿美景。



Tasteful Essentials

高超品味

For added value and convenience, each unit comes ready-fitted with:

- Kitchen cabinets for dry/wet kitchen*
- General electrical appliances - hood & hob, refrigerator, washer/dryer and oven/microwave oven*
- Wardrobes in all bedrooms
- Quality bathroom fittings and accessories
- Premium MML brand tiles for floors and bathroom walls
- Split unit air-conditioners for living and all bedrooms

每个单位已装置了以下增值和便利的设备:

- 湿/干厨房设有厨房橱*
- 配备电器 - 抽油烟机与煤气炉搁架、冰箱、洗衣机/干衣机和烤箱/微波炉*
- 所有卧室设有衣柜
- 浴室设有优质设备和配饰
- 地面和浴室墙壁铺上高级MML瓷砖
- 客厅和所有卧室设有分隔式冷气机

* whichever applicable 视何者适合



S1

560 sq.ft.
L05 - L26

S2

549 sq.ft.
L05 - L26

S3

549 sq.ft.
L05 - L26

A1

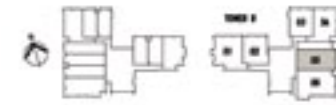
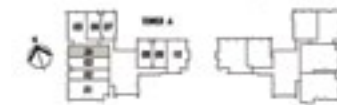
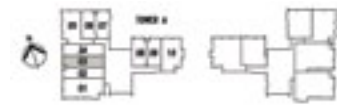
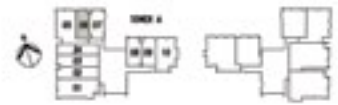
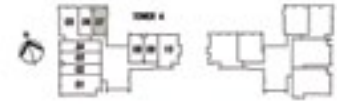
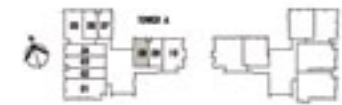
646 sq.ft.
L05 - L26

A2

657 sq.ft.
L05 - L26

A3

990 sq.ft.
L06



Unit Type S

Unit Type A

B1

915 sq.ft.
L05 - L26

B2

936 sq.ft.
L05 - L19

B3

926 sq.ft.
L05 - L26

B4

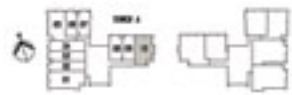
1,012 sq.ft.
L05 - L19

B5

1,076 sq.ft.
L05 - L26

B6

1,076 sq.ft.
L05 - L19



Unit Type B

C1

1,345 sq.ft.
L05 - L19



C2

1,410 sq.ft.
L05 - L25



C3

1,421 sq.ft.
L05 - L26



Unit Type C

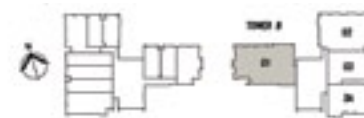
D

2,120 sq.ft.
L20 - L25



E

2,551 sq.ft.
L20 - L23A



Unit Type D & E

F

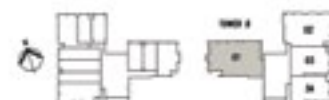
3,552 sq.ft.

L26

G

4,316 sq.ft.

L25 - L26



Specification

STRUCTURE	Reinforced concrete	WALL FINISHES	
WALL	Reinforced concrete/masonry/drywall*	External	: Plastered & exterior quality paint
ROOFING	R.C. flat roof	Internal	: Plastered & emulsion paint
CEILING	Generally skim coat/ Fibrous plaster ceiling*	Bathrooms	: Ceiling height MML homogeneous tiles
WINDOWS	Aluminum frame with glass/glass louvred window*	Kitchen	: MML homogeneous tiles/plastered & emulsion paint*
DOORS		SANITARY WARE & FITTINGS	Selected quality sanitary ware & fittings
Main Entrance	: Fired rated door	ELECTRICAL INSTALLATIONS	
Bedroom	: Sliding timber door*	Ceiling light point	
Others	: Timber flush door/aluminum sliding door*	Ceiling fan point	
FLOOR FINISHES		13A switch socket outlet	
Entrance Foyer	: MML porcelain tiles	15A switch socket outlet	
Living/Dining	: MML porcelain tiles (For Type A1, A1a, A2, A3, B1, B2, B3, B4, B5, S1, S1a, S2 & S3)	Air-conditioning point	
Bedroom	: MML porcelain tiles (For type A1, A1a, A2, A3, S1, S1a, S2 & S3)	Telephone point	
	: Pre-engineered timber floor (For B1, B2, B3, B4, B5, C1, C2, C3, D, E, F & G)	SMATV outlet point with Astro B'yond ready	
Bathroom	: MML homogeneous tiles		
Kitchen	: MML porcelain tiles		
A/C Ledge	: Cement rendered		

*Where applicable

Unit Type F & G

The Horizon Residences will be a lovely home and an investment for the future. It is a landmark development by award-winning Hap Seng Land Sdn Bhd, a member of the Hap Seng Consolidated Group.

The Horizon Residences 将是您的温馨家园同时也是一项超值的长远投资。获得奖赏肯定的 Hap Seng Land Sdn Bhd 是 Hap Seng Consolidated Group 集团成员之一。

To find out more please contact us:
欲知更多详情，请拨以下电话咨询或浏览我们的网站：

Sales Gallery / 展销廊
Ground Floor, Menara Hap Seng,
Jalan P.Ramlee, 50250, Kuala Lumpur

Hotline no: 1 300 880 818

t +60 3 2116-9398 / +60 3 2116-9397
f +60 3 2116-9396
e info@hapsengland.com
w www.hapsengland.com

A Premier Development by:
此卓越项目由以下公司发展：



Hap Seng Land

Hap Seng Land Development (JTR) Sdn. Bhd.
19th Floor, Menara Hap Seng
Jalan P. Ramlee, 50250
Kuala Lumpur, Malaysia

DISCLAIMER: While every reasonable care has been taken during preparation of the marketing material, the developer and its agents cannot be held responsible for any inaccuracies. All statements are believed to be correct but are not to be regarded as statements or representation of fact. All information and specifications are current at time of print and are subject to changes as may be required and cannot form part of an offer or contract. All plans are subject to amendments approved by the relevant authorities. Rendering and illustrations are artist' impressions only and cannot be regarded as representation of fact.

免责声明：发展商及其代理商已尽所能确保营销资料的准确性。所列资料属实但不代表是公司的陈述或事实。在刊登之时所有的资料及详述皆属实，但可随需而更改且不构成要约或合约。所有的计划都需有关政府部门批准。所有的插图都是设计师的构图并不属实。

• Developer: Hap Seng Land Development (JTR) Sdn Bhd (777661-V) • Developer License No.: 11731-1/04-2017/495
• Validity: 20/04/2012 - 19/04/2017 • Advertising & Sales Permit: 11731-1/05-2014/10(L) • Validity: 03/05/2013 - 02/05/2014
• Approval Authority: Dewan Bandaraya Kuala Lumpur • Building Approval Plan: BPU3 OSC 2011 2995 • Encumbrances: Nil
• Tenure of Land: Freehold • Expected Date of Completion: July 2015 • Total Units: 335 • Selling Price: Min RM625,888
- Max RM7,467,888 • Bumiputera Discount: 5%

An Investment
For The Future

超值的长远投资

A Premier Development by:
荣誉推介:



Hap Seng Land

Hap Seng Land Development (JTR) Sdn. Bhd.
(777661-V)