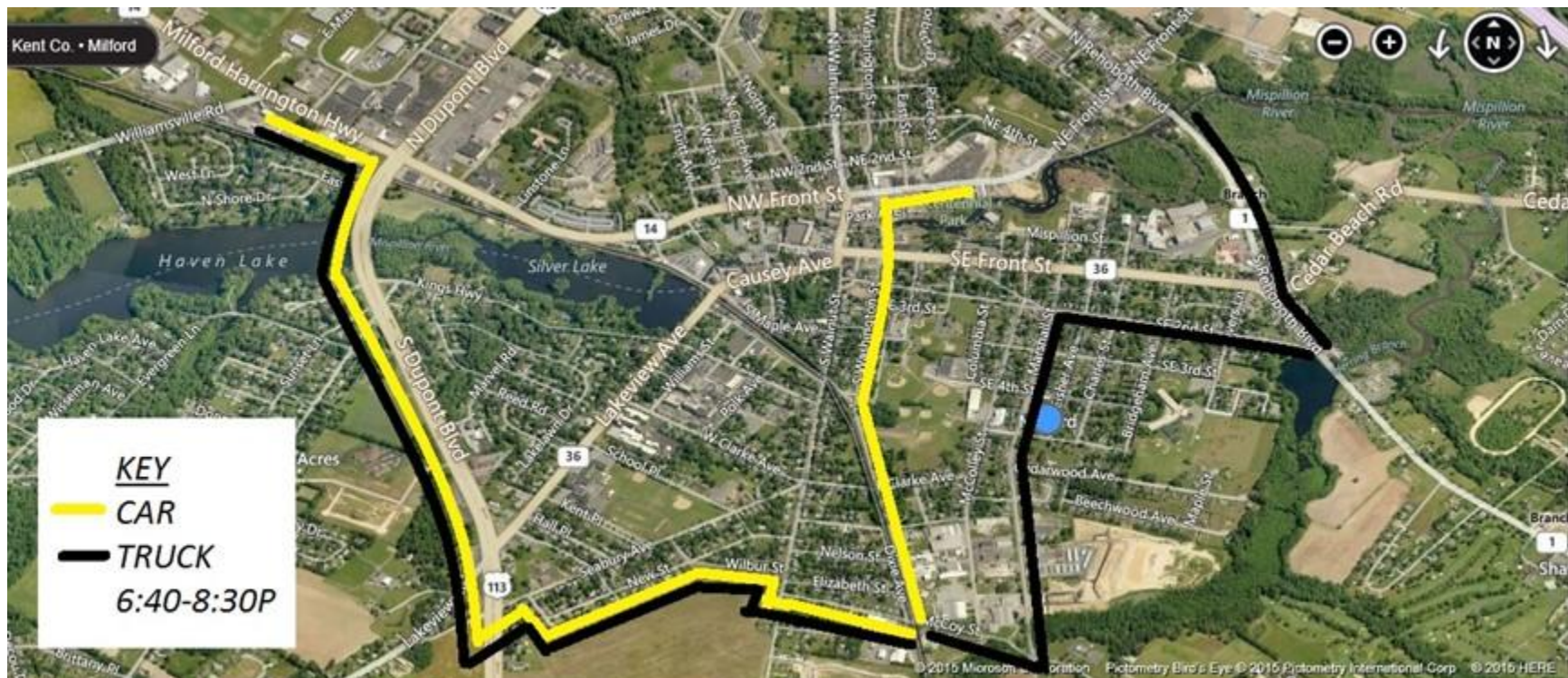


Milford Parade, crossing Walnut Street Detour, October 15, 2025, 6:00-8:30pm



East Bound

Follow detour signage-
 Southbound Rt 113 to Seabury Avenue –left turn
 Seabury to Cherry St, --right turn
 Cherry to New St, --left turn
 New St to Wilbur St –right turn
 Wilbur St to S Walnut St –right turn
 S Walnut St to McCoy St –left turn
 McCoy St to S Washington St –left turn follow to all points
 North and East
TRUCKS continue on McCoy St to Marshall St –left turn
 Marshall St to South East Second St –right turn
 S.E. 2nd St to Alt 1-Rehoboth Blvd to all points North, East and
 South

West Bound

Follow Detour signage-
CAR- S. Washington St to McCoy St –right turn
TRUCK- Alt 1 Rehoboth Blvd to SE 2nd St –right turn
TRUCK- SE 2nd St to Marshall St –left turn
TRUCK- S. Marshall St to McCoy St –right turn
ALL- McCoy St to S Walnut St –right turn
 S Walnut St to Wilbur St –immediate left turn
 Wilbur St to New St –left turn
 New St to Cherry St –right turn
 Cherry St to Seabury Avenue –left turn
 Seabury Avenue to N. Rt 113 –right turn
 N. Rt 113 to Westbound Rt 14 –left turn
 To all points West and North and South