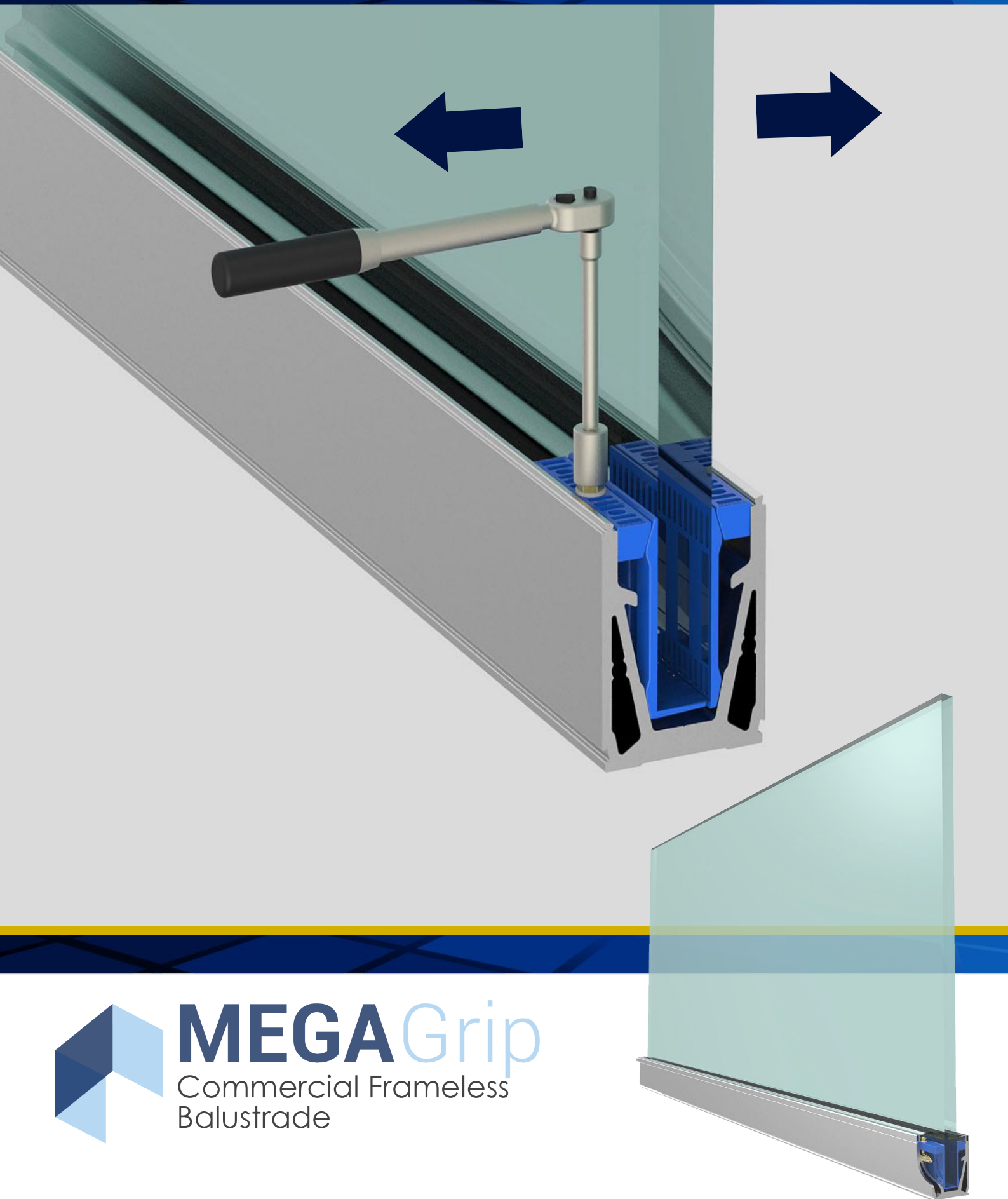
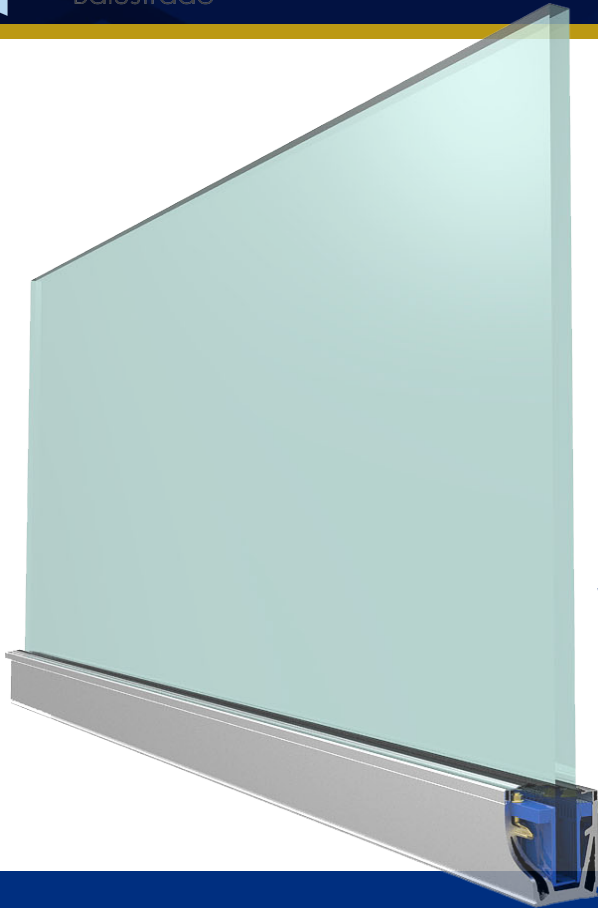


# PLATINUM



**MEGA**Grip  
Commercial Frameless  
Balustrade



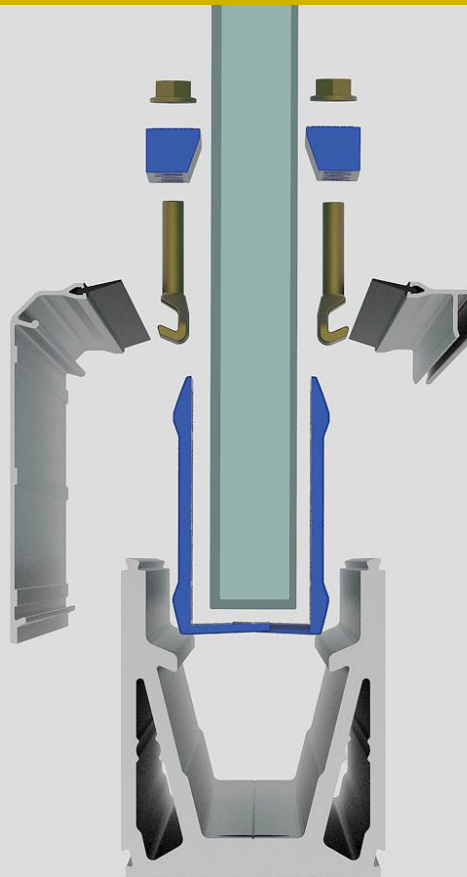
MegaGrip Is Platinum's  
Specialist Solution  
For A Commercial  
Glass Balustrade.



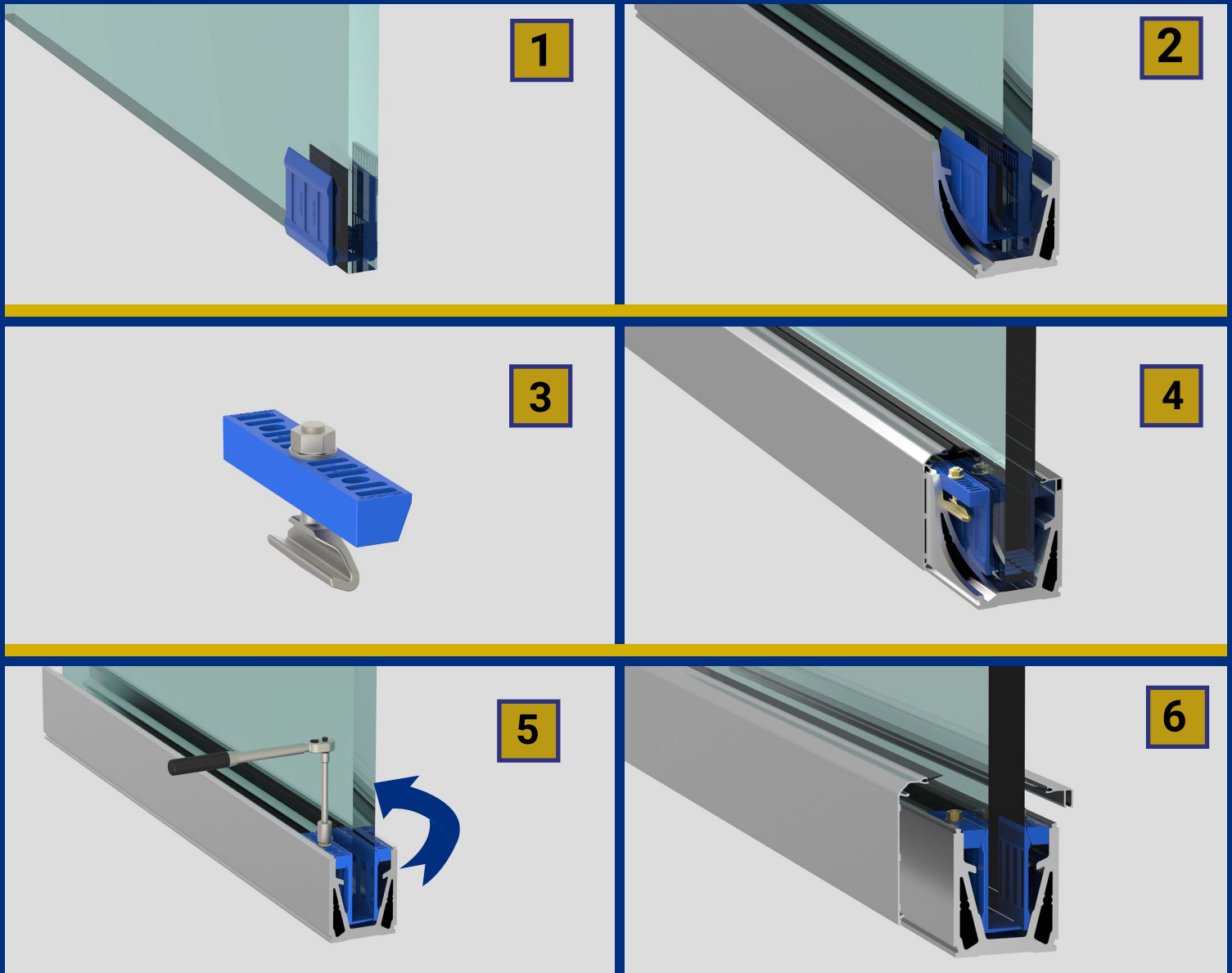
Each panel of glass can be fully  
adjustable after installation of the channel



- **3kN Loadings**  
25-33mm glass types all achieve  
less than 25mm deflection
- **Simple to install**  
Clamps simply attach to the glass  
and can be placed in the channel
- **No specialist tools**  
Standard 13mm socket to adjust and  
tighten the clamp
- **Durable**  
Anodised to (20 micron) A4 grade  
stainless steel



## Megagrip is so easy to install



**1** Squeeze the glass clamps onto the glass (4 per metre)

**3** Insert the clamp bar through the anchor and loosely tighten the bolt.

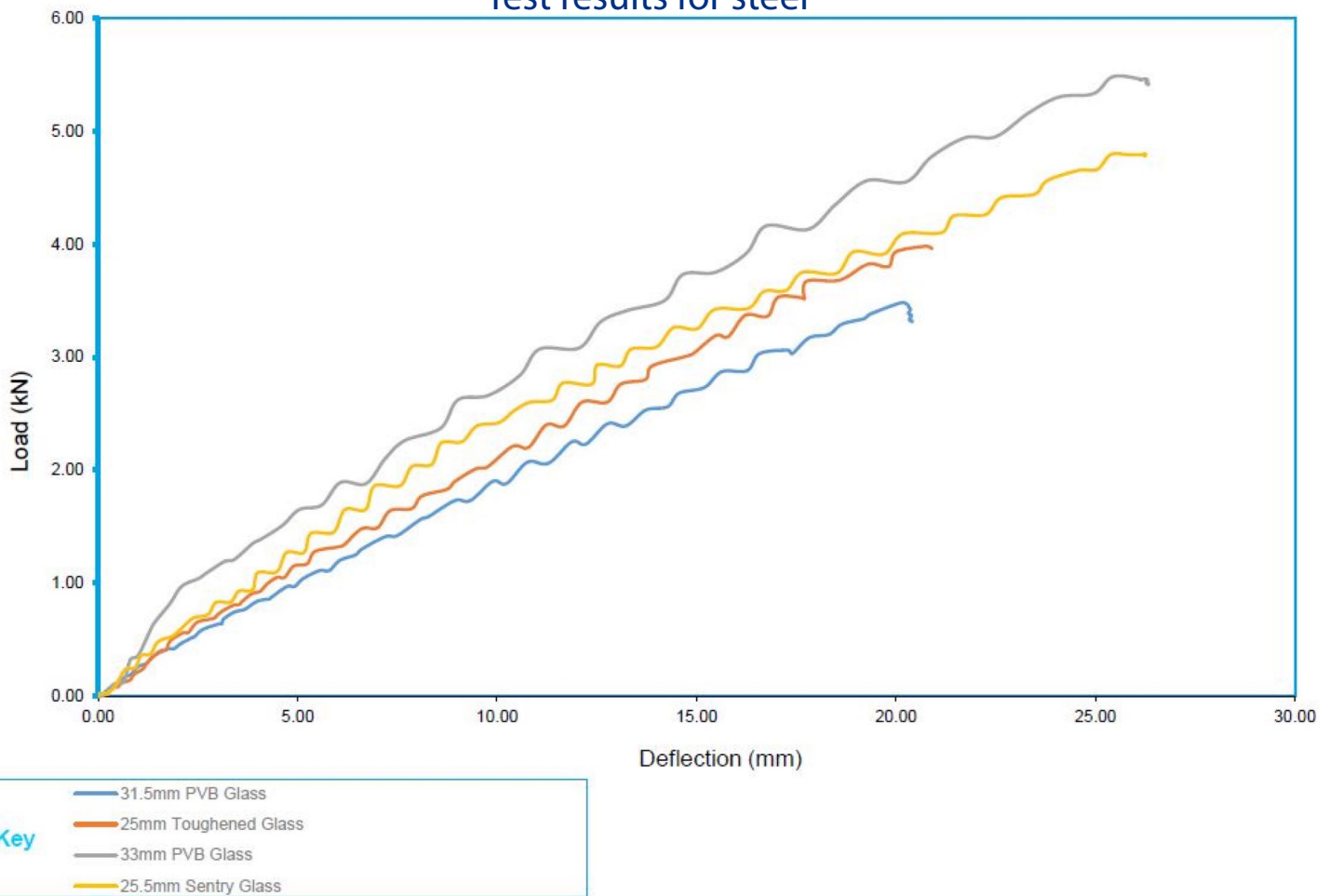
**5** Adjust the glass into desired position and tighten the nuts on each side of the MegaGrip system to 15Nm.

**2** Seat the glass within the channel

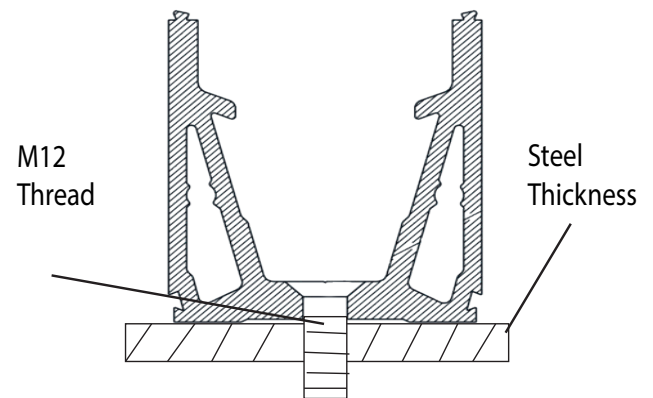
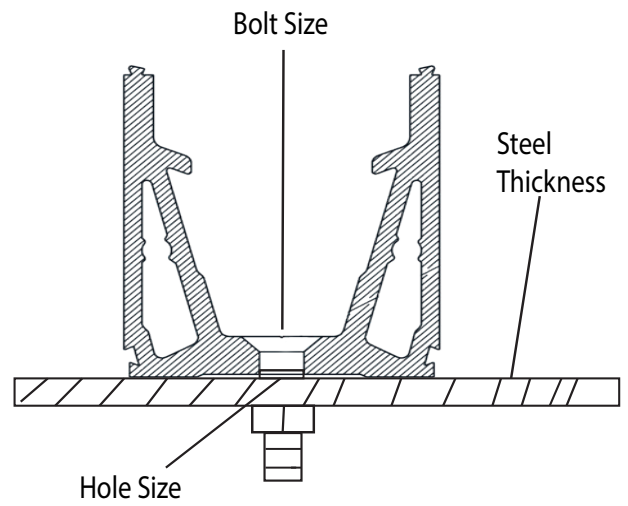
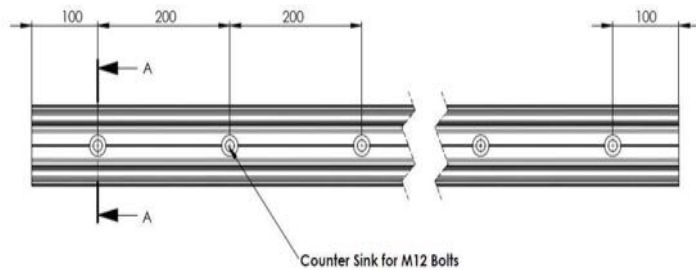
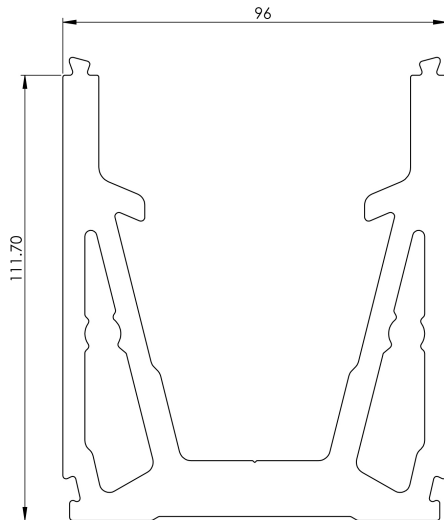
**4** Slide the grapple clasps down and through the channel so they sit in position on the glass clamp.

**6** Finally, insert the gasket into the top recess of the cladding and firmly press on to the channel.

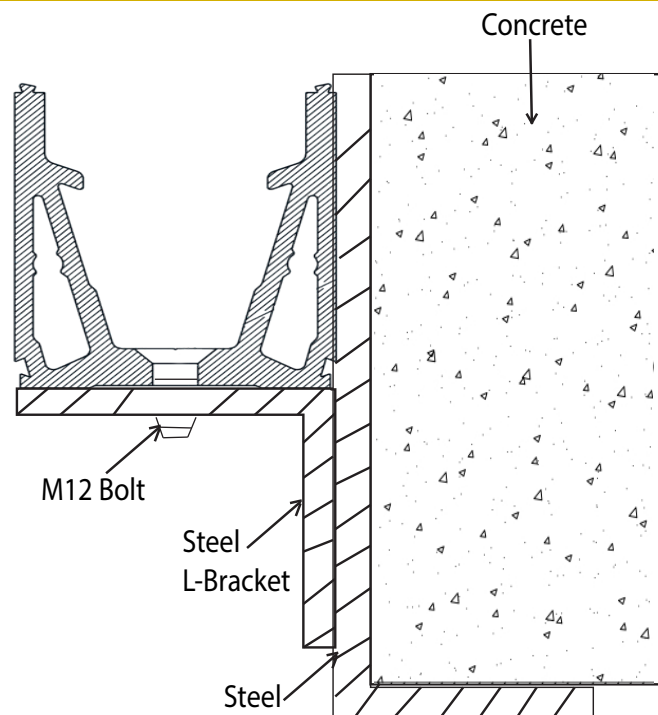
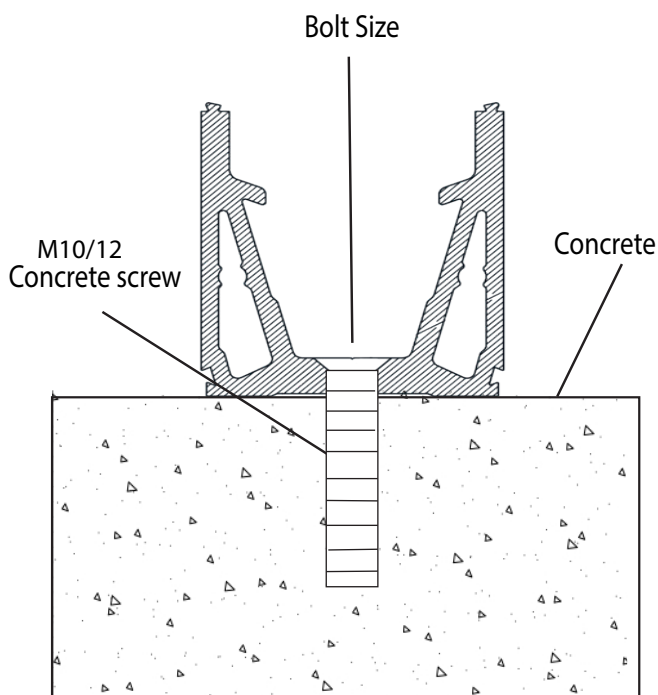
### Test results for steel



Glass Type	Glass Span (mm)	Working Line Loads or System (kN/m)	Test Height (mm)	Deflection at Working Line Load for System (mm)
25mm Toughened Monolithic	1000	3.0	1100	14.67
25.5mm Toughened Laminated Sentry	1000	3.0	1100	13.21
31.5mm Toughened Laminated PVB	1000	3.0	1100	16.55
33mm Toughened Laminated PVB	1000	3.0	1100	11.00



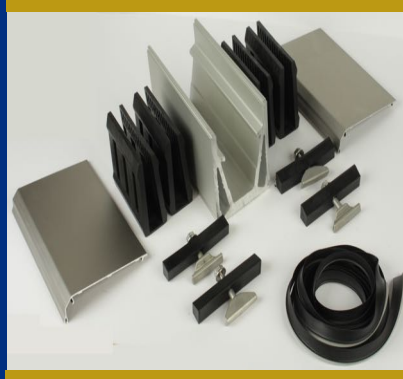
## FITTING APPLICATIONS





PRODUCT

CODE



**MEGA GRIP FULL KIT**

**SG-300.BF KIT**



**BASE DRILLED MEGA GRIP**

**SG-3100.NA** - Clear anodised megagrip channel  
**SG-3100.SAA** - Satin anodised megagrip channel



**SIDE CLADDING**  
**TOP BEAD**

**SG-3301** - Megagrip side cladding  
**SG-3300** - Megagrip top bead

## MEGA GRIP PARTS AND ACCESORIES



**GLASS CLAMP KIT**

**SG-3225** - 25mm glass clamp kit  
**SG-3226** - 25.5mm glass clamp kit  
**SG-3231** - 31.5mm glass clamp kit  
**SG-3233** - 33mm glass clamp kit



**DOWELL**

**SG-5401**



**GASKET**

**SG-3402** - Wide gasket 25 & 25.5mm glass  
**SG-3403** - Thin gasket 31.5 & 33mm glass



- Only 2 spigots & fixings required per metre

Extremely quick to install, elongated holes to allow for easy alignment

- No need to drill the glass

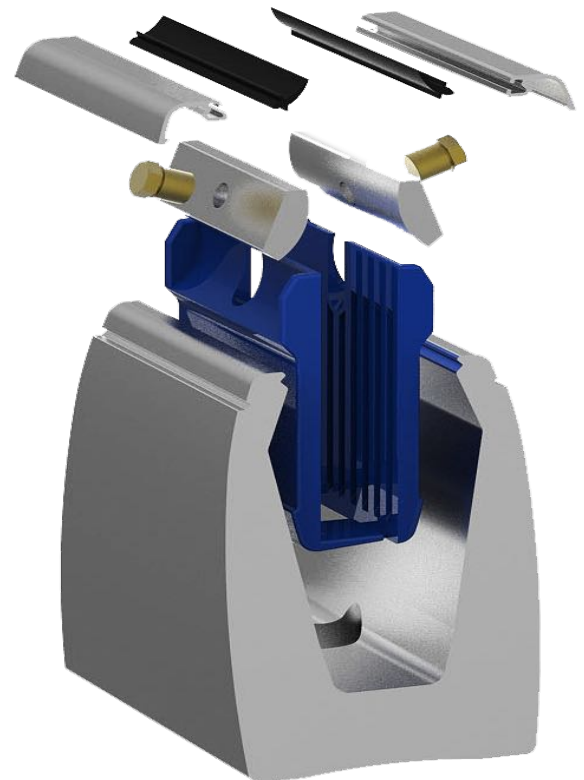
Our glass clamping mechanism removes the need to hold the glass with locking pins

- No drainage issues

Free drainage between the spigots means no water gets trapped inside the balcony area

- Uses the proven adjustment system as Posi-glaze

Horizontal alignment to each glass pane, ensuring the top edge of the glass is equal



## Explore Our Range



- Up to 1.5 kN Loadings

For uses from domestic to light commercial

- Ease of Adjustment

At the turn of a screw watch the glass manoeuvre

- Simple to Install

Glass clamps are easily installed before positioning the glass

- Excellently Engineered

Lightweight design with precision design to keep strength