

**Mouse Anti-Heat Shock Protein (HSP60) (Mitochondrial Marker) [LK1]: MC0064**

**Intended Use:** For Research Use Only

**Description:** Recognizes a 60kDa protein, identified as the heat shock protein 60 (hsp60). Its epitope is localized between aa 383-447 of human hsp60. A wide variety of environmental and pathophysiological stressful conditions trigger the synthesis of a family of proteins known as heat shock proteins (hsps), more appropriately called as stress response proteins (srps). hsp60 is a potential antigen in a number of autoimmune diseases. In human arthritis and in experimentally induced arthritis in animals, disease development coincides with the development of immune reactivity directed against not only bacterial hsp60, but also against its mammalian homolog. Clone LK1, unlike LK2, recognizes only the mammalian (not bacterial) hsp60 and is useful in distinguishing hsp60 from mammals and bacteria.

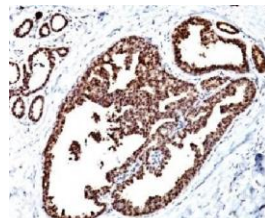
**Specifications**

Clone: LK1  
 Source: Mouse  
 Isotype: IgG1k  
 Reactivity: Human, mouse, rat, hamster, sheep, rabbit, cow, dog, pig, monkey, chicken, Xenopus laevis, Drosophila  
 Localization: Mitochondria in cytoplasm  
 Formulation: Protein A/G purified antibody from bioreactor concentrate. Prepared in 10mM PBS with 0.2% BSA and < 0.09% sodium azide (NaN3)  
 Storage: Store at 2°- 8°C. For longer periods of storage, store at -20°C. Avoid repeat freeze-thaw cycles  
 Applications: IHC, ELISA, Flow Cyt, ICC/IF, IP, WB  
 Package:

Description	Catalog No.	Size
Heat Shock Protein (HSP60) (Mitochondrial Marker) Concentrated	MC0064	1 ml

**IHC Procedure\***

Positive Control Tissue: HeLa or HepG2 cells. Synovial biopsies from patients with juvenile chronic arthritis. Synovial lining layer is strongly positive for hsp60. Breast carcinoma  
 Concentrated Dilution: 50-200  
 Pretreatment: Citrate pH6.0, 15 minutes using Pressure Cooker, or 30-60 minutes using water bath at 95°-99°C  
 Incubation Time and Temp: 30-60 minutes @ RT  
 Detection: Refer to the detection system manual  
 \* Result should be confirmed by an established diagnostic procedure.



FFPE human breast carcinoma stained with anti-HSP60 using DAB

**References**

1. CD1A-positive cells and HSP60 (HSPD1) levels in keratoacanthoma and squamous cell carcinoma. Cabibi D, et al. Cell Stress Chaperones. Jan;21(1):131-7, 2016.
2. Antibodies against Hsp60 and Hsp65 in the sera of women with ovarian cancer. Bodzek P, et al. J Ovarian Res. Mar 11;7:30, 2014.
3. Two monoclonal antibodies generated against human hsp60 show reactivity with synovial membranes of patients with juvenile chronic arthritis. Boog CJ; et al. Journal of Experimental Medicine, 175(6):1805-10, 1992.