



www.wolfperformance.co.uk
cain@wolfperformance.co.uk
00 44 (0)7944 720 706

TRAD CHASSIS CROSS-MEMBER RUB PLATE

Fitting Guide





The kit includes;

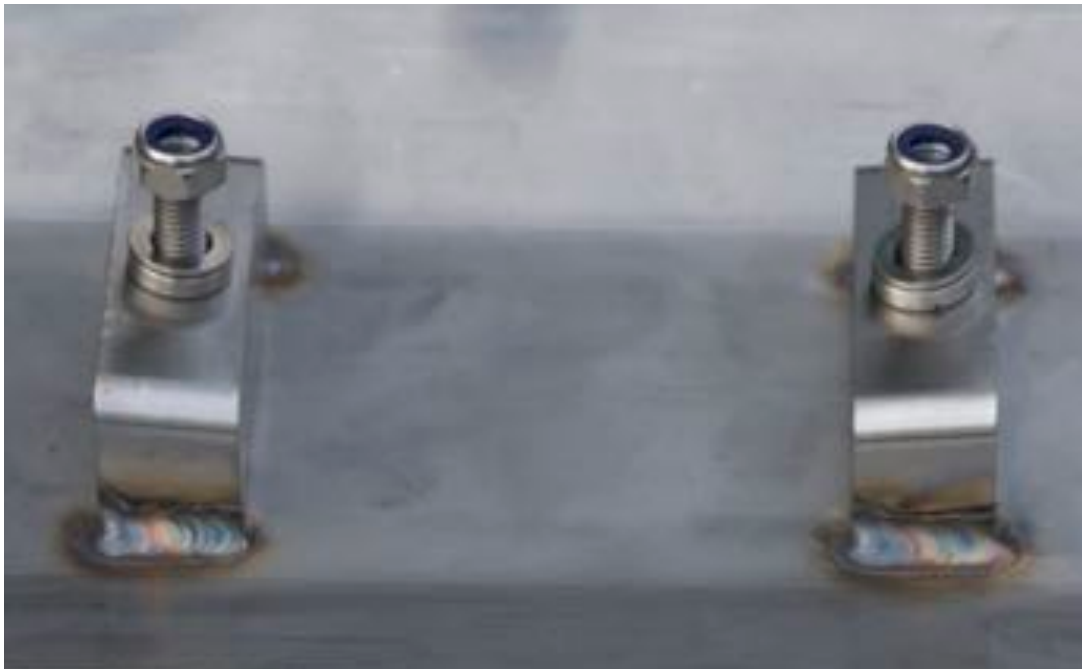
1 No. Rub Plate

2 No. Nyloc nuts & Countersunk bolts

2 No. Spherical Washers (2 male, 2 female)

1 No. 6.2mm Drill Bit

2 No. Cable Ties (not pictured)



Picture shows the spherical washer order, female first then male



1. Loosely "tie" the cable ties around the cross-member



2. Place the Rub Plate in position and tighten the cable ties, so they do not cover the holes

Note. G-Clamps or Sash-clamps can be used



3. To check the plate is centralised, you can use a rule on both sides of the plate against the cross-member



4. Drill one hole in the cross-member using the plate as a guide



5. Place the first bolt through the first hole and nip up. Then drill the second hole.

Note. you will need to galvanise or paint the bare metal of the holes



6. Bolt the Rub Plate to the cross-member, make sure the spherical washers are in order (female first, then the male).

7. Go and have a cup of tea and a piece of cake!