

July 9, 2016 WWD Board Meeting, Water Operations Summary-Director Bainbridge

- A. Well Level Report: (see Well Level Charts) Water levels as of June 30, 2016 have started to drop with the end of the rainy season and increased usage starting in June. The average water levels in our two largest producing wells is a little lower than the last 2 years at this time.
1. Rainfall for the 2015/16 rainy season (July1, 2015 to June 30, 2016) was 18.3 inches compared to 15.4 inches for last year and 16.4 inches the previous year.
 2. Well #5, our static monitoring well, is 6 feet higher than last year at this time. (It is 142 feet lower than the record high measured in April 2012.)
 3. Well #9, our largest producer, is 6 feet higher than last year at this time. (It is 372 feet lower than the record high measured in September 2011.)
 4. Well #11, our second highest producer, is 27 feet lower than last year at this time. (It is 331 feet lower than the record high measured in November 2011.)
- B. Conservation Status Report: (See Water Production 2016 vs. 2015 Chart)The State has determined that the emergency water conservation order is to be replaced by conservation targets developed by each water district based on the individual water districts water availability. Since WWD's only source of water is ground water and based on well levels being a little lower than last year, it appears that we will need to target water usage at or below 2015 levels.
- C. Spike of Water Usage in June/Usage Summary to Customers E-mail Report
1. Water Demand spiked the first 2 weeks of June: (See Daily Demand Chart) From June 3 to June 10 daily water demand was between 20,000 and 39,000 gallons per day as compared between 10,000 and 20,000 gallons/day for the rest of the quarter. Almost double the daily demand. Usage dropped down to around 20,000 gallons per day average for the rest of June. (One customer reported a leak during that period and their usage was roughly 30,000 gallons higher than their typical usage for the current quarter. A second customer reported a leak and their usage was roughly 80,000 gallons above their typical quarterly usage but it was difficult to determine the duration of the leak.) Pumping Hours per day also shot up during the peak usage days and hourly well production dropped off. The 39,000 gallon day was a real concern because the small water storage tank only has a capacity of 44,000 gallons.
 2. Received Board approval to e-mail a conservation notice to each customer along with an individual usage history by quarter from 1st quarter 2013 through 2nd quarter 2016.
- D. Storage Tank Refurbishment Project/Water Systems Control Report
1. Large Storage Tank: On May 16, 2016 we signed a contract with Superior Tank Solutions (STS) for the Large Tank Refurbishment

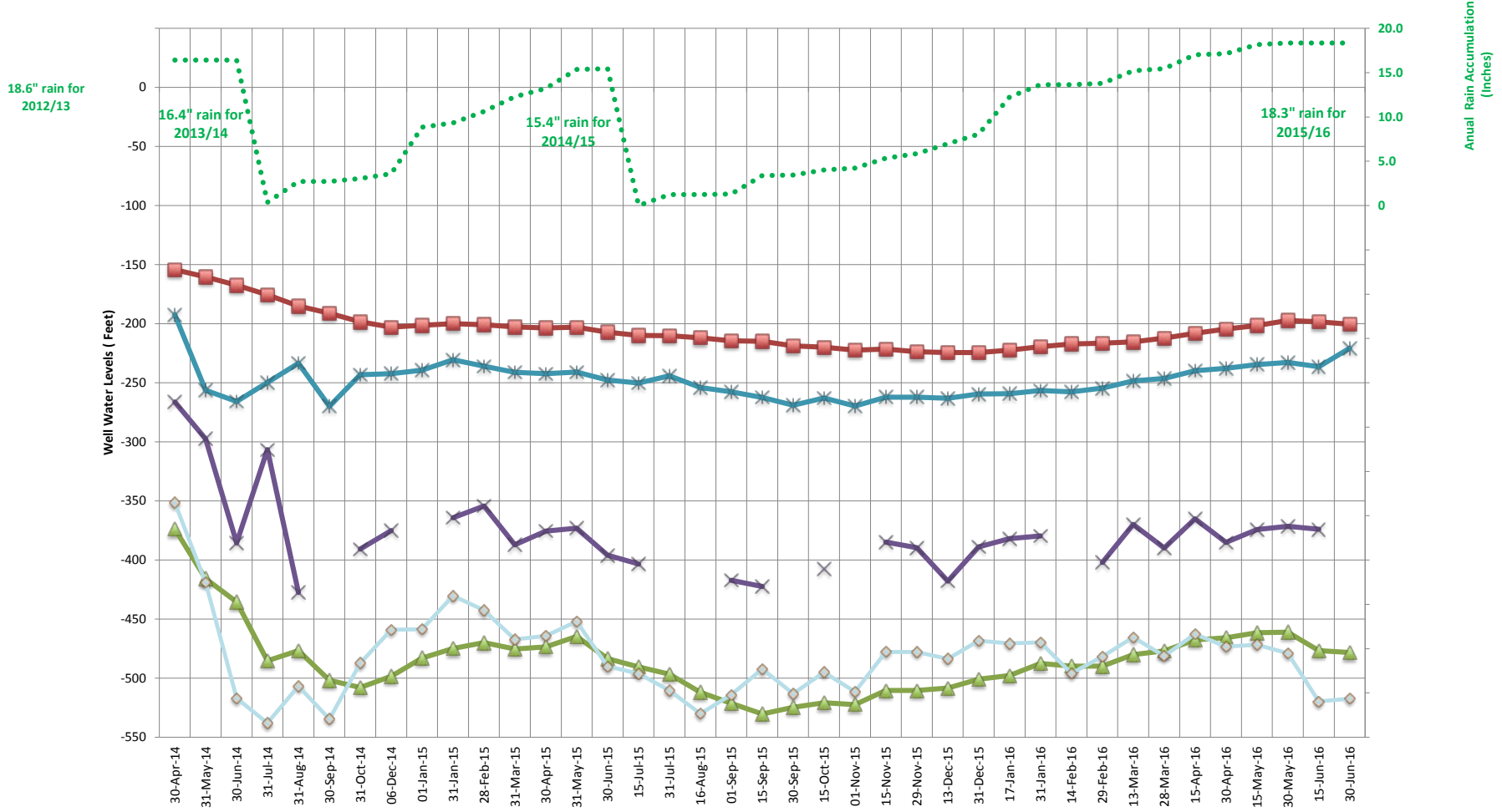
(\$76,976). Drawings have been prepared and submitted for fabrication. WWD has conferred with San Diego County Department of Environmental Health and obtained approval of the testing requirements for returning the tank to service once the work has been completed.

2. Small Storage Tank: On May 12, 2016 we signed a contract with STS for the Small Tank Interior Coating Refurbishment (\$38,496). This work is planned for January/February 2017 during the rainy season.
3. Automatic water level well controls: We currently only have automatic well controls in the large storage tank. With this tank out of service, we have had to go to the pump house and manually start and stop the wells 2 to 4 times a day. WWD has contacted 4 different contractors to install an automatic water level control system in our small storage tank so that we have a backup to the controls in the large tank and allow automatic operation for when either tank is out of service. Three indicated they would provide a bid. To date one contractor has provided a very high bid for the work, a second contractor has provided a reasonable bid but can't do the work until fall, and the 3rd contractor has stopped returning our calls. We will continue to work on this.

Attachments:

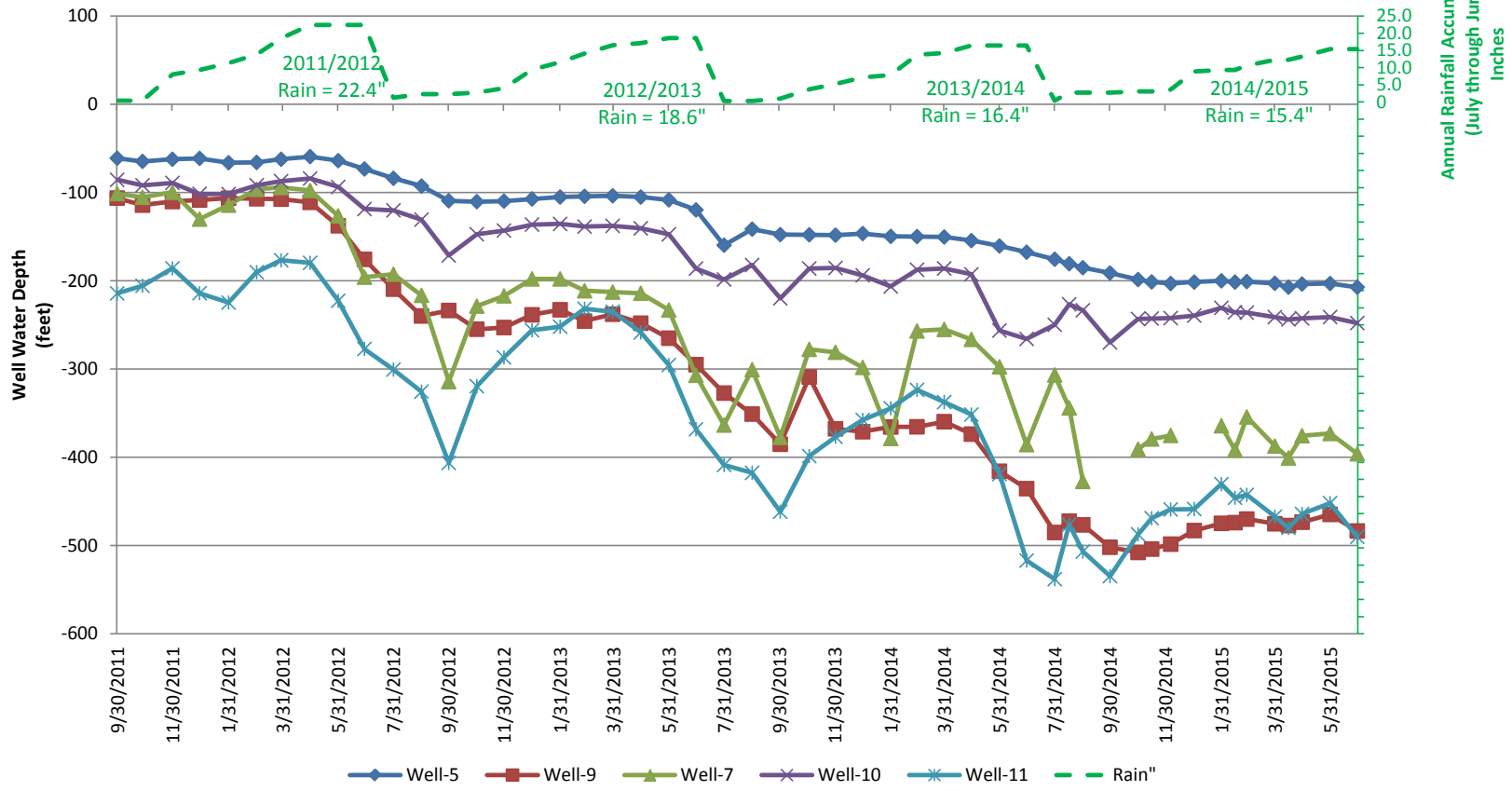
- Well Water Level Charts:
 - Well Water Levels Apr 30 2014 to Jun 30 2016
 - Well Water Levels Sept. 2011 to Jun 30 2015
- Water Conservation
 - Chart: Monthly Water Production 2016 vs 2015 Data through June 2016
- Water Usage Spike:
 - Daily Demand 2nd Qtr 2016 (Gallons Pumped per Day & Hours/Day Wells Run)

WWD Well Water Levels and Rain - 4/30/14 thru 6/30/16
Drop in summer water levels due to poor rain last 3 years.



	30-Apr-14	31-May-14	30-Jun-14	31-Jul-14	31-Aug-14	30-Sep-14	31-Oct-14	06-Dec-14	01-Jan-15	31-Jan-15	28-Feb-15	31-Mar-15	30-Apr-15	31-May-15	30-Jun-15	15-Jul-15	31-Jul-15	16-Aug-15	01-Sep-15	15-Sep-15	30-Sep-15	15-Oct-15	01-Nov-15	15-Nov-15	29-Nov-15	13-Dec-15	31-Dec-15	17-Jan-16	31-Jan-16	14-Feb-16	29-Feb-16	13-Mar-16	28-Mar-16	15-Apr-16	30-Apr-16	15-May-16	30-May-16	15-Jun-16	30-Jun-16
Well-5	-154	-161	-168	-176	-185	-191	-199	-203	-201	-200	-201	-203	-204	-203	-207	-210	-210	-212	-214	-215	-219	-220	-222	-221	-224	-224	-224	-222	-219	-217	-215	-212	-208	-205	-202	-197	-198	-201	
Well-9	-374	-416	-436	-485	-477	-502	-508	-498	-483	-475	-470	-475	-474	-465	-484	-490	-497	-512	-521	-530	-525	-521	-522	-511	-511	-508	-501	-498	-488	-490	-490	-480	-477	-468	-466	-462	-461	-477	-478
Well-7	-266	-297	-386	-307	-427		-391	-375		-364	-354	-387	-376	-373	-396	-403		-417	-422		-408		-385	-390	-418	-389	-382	-380		-402	-370	-390	-365	-385	-374	-372	-374		
Well-10	-193	-256	-266	-250	-233	-270	-243	-242	-239	-231	-236	-241	-242	-241	-248	-250	-244	-254	-258	-262	-269	-263	-270	-262	-262	-263	-260	-259	-257	-258	-255	-248	-246	-240	-238	-235	-233	-236	-221
Well-11	-352	-419	-517	-538	-507	-535	-487	-459	-459	-430	-443	-467	-464	-452	-490	-496	-511	-530	-514	-492	-513	-495	-512	-478	-478	-484	-468	-471	-470	-496	-482	-465	-481	-463	-473	-472	-479	-520	-517
Rain"	16.4	16.4	16.4	0.37	2.72	2.72	3.04	3.6	8.85	9.31	10.62	12.28	13.21	15.36	15.43	0	1.23	1.23	1.31	3.39	3.44	4.02	4.22	5.35	5.85	6.98	8.04	12.24	13.65	13.65	13.79	15.2	15.45	17.01	17.13	18.15	18.33	18.33	

Wynola Water District Well Water Levels & Annual Rainfall (Sept 2011 to Jun 2015)



	Well #5		Well #7		Well #9		Well #10		Well #11	
	Depth-Ft	Date	Depth-Ft	Date	Depth-Ft	Date	Depth-Ft	Date	Depth-Ft	Date
High Water	-59	4/30/2012	-94	3/29/2012	-106	9/30/2011	-84	4/30/2012	-186	11/30/2011
Low Water	-224	12/31/2015	-427	8/31/2014	-530	9/15/2015	-270	11/1/2015	-538	7/31/2014
Pump Depth	N/A		-750	6/29/2002	-882	2/1/2012	-600	12/19/2001	-672	2/25/2014

WWD Water Production 2016 vs 2015

