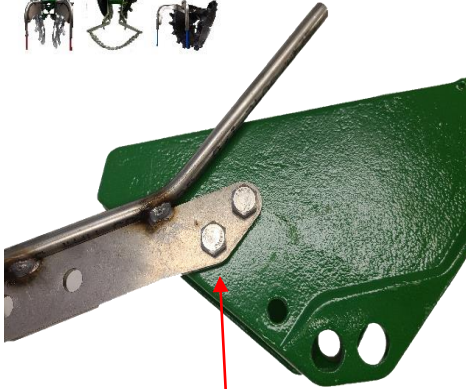


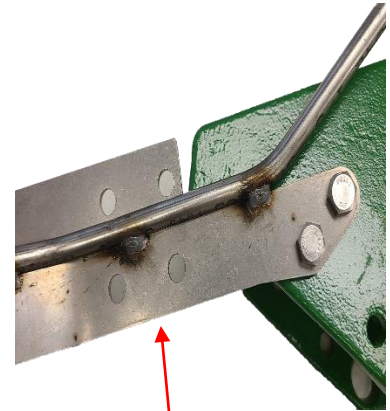


Picture Layout For RMTDC N Site Tube Kit



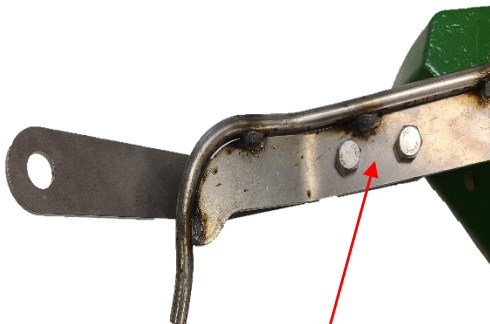
STEP 1

INSTALL 3/8" BOLTS AND NUTS INTO EXISTING FRAME HOLES. LEAVE A LITTLE LOOSE FOR STEP 4.



STEP 2

LOCATE CHAIN BRACKET AND LINE UP SIDE HOLES TO INSTALL 3/8" BOLTS.

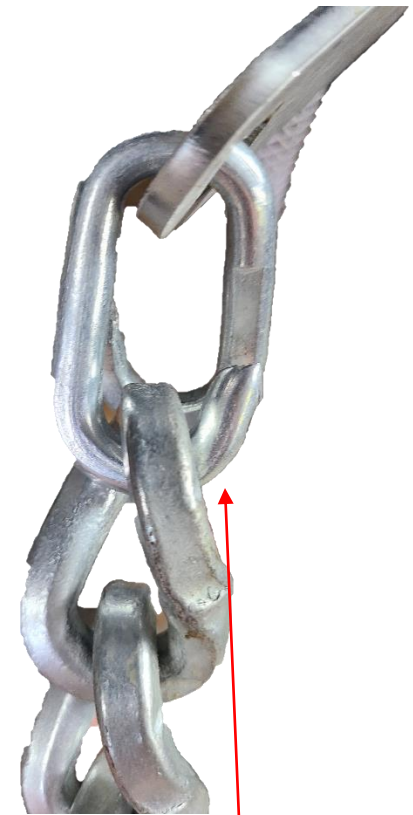


STEP 3

INSTALL 3/8" BOLTS AND NUTS THROUGH BRACKETS AND TIGHTEN. LEAVE A LITTLE LOOSE FOR STEP 4.

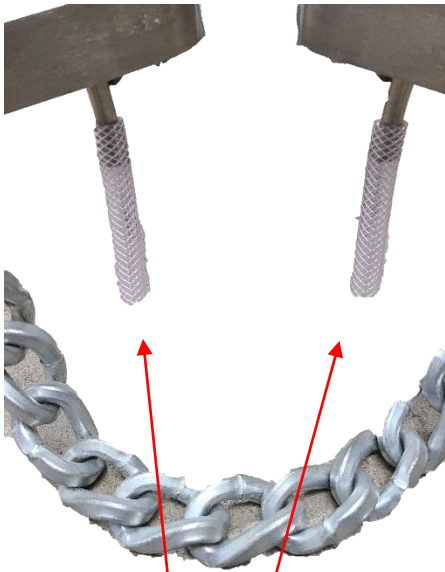
STEP 4

ENSURE THAT THE BRACKETS ARE LEVEL ON THE TUBES AND ROW UNIT CLOSING FRAME. TIGHTEN ALL BOLTS.

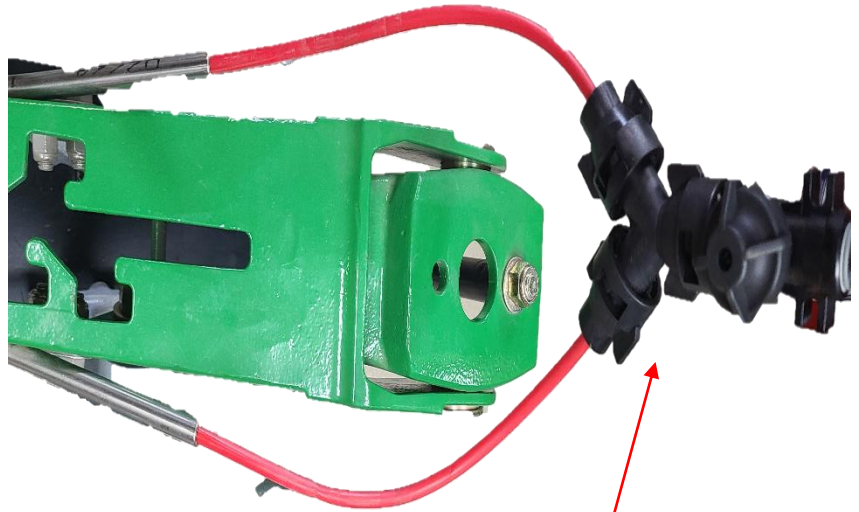


STEP 5

LOCATE THE "COLD SHUT LINKS" AND HANG CHAIN TO BRACKET. *(SOME LINKS MAY BE DIFFICULT AND REQUIRE A SPOT WELD TO HOLD TIGHT TO ITSELF).



STEP 6
INSTALL SUPPLIED "VENT TUBES".



STEP 7
INSTALL "OPTIONAL" ORIFICE AND SPLITTERKIT. PUSH ¼" LINE ALL THE WAY THROUGH THE TUBE UNTIL YOU SEE IT EXIT THE BOTTOM. **MAKE SURE LINES DON'T KINK OR GET CAUGHT FROM OUTSIDE FIELD DEBREE.**



8782 ULERY RD.
NEW CARLISLE, OH. 45344

1-800-358-8070
reskillings@reskillings.com

***CONSULT YOUR AGRONOMIST** FOR PROPER PRODUCT USE, RATES, AND APPLICATION SPACING. GOOD COMMUNICATION WILL INSURE THE BEST OUTCOME AND SUCCESS FOR FERTILIZER TUBE USE.

***R.E. SKILLINGS SUPPLIES INC IS NOT LIABLE FOR ANY DAMAGE OR HARM TO CROPS OR EQUIPMENT FROM THE USE OF THE N-SITE TUBE AND ASSOCIATED EQUIPMENT.**

THANK YOU FOR CHOOSING THE **N-SITE TUBE** FOR YOUR FERTILIZER PLACEMENT!