

Mouse Anti-CD4 [MT310]: MC0237, MC0237RTU7

Intended Use: For Research Use Only

Description: CD4 is a glycoprotein found on the surface of immune cells such as T helper cells, monocytes, macrophages and dendritic cells. It is a co-receptor that assists the T-cell receptor (TCR) with an antigen-presenting cell and also interacts directly with MHC class II molecules on the surface of the antigen-presenting cells using its extracellular domain. In lymphatic tissues, the CD4+ T-cells are seen in large numbers in the parafollicular zone, while scattered cells are found in the germinal centres and mantle zone. CD4 is also demonstrated in hepatic sinusoidal cells, monocytes and monocytes-derived cells but not expressed on B-cells and immature thymocytes. Precursor T-lymphoblastic lymphomas are therefore variable in their expression of CD4. Most mature T-cell lymphomas are CD4 positive with the exception of aggressive NK-cell leukemia and extranodal NK/T-cell lymphoma. CD4 plays an important role in the classification of lymphocytes in inflammatory lesions and malignant lymphomas.

Specifications:

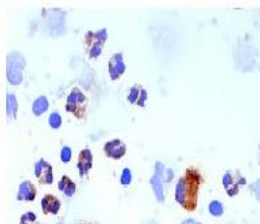
Clone: MT310
 Source: Mouse
 Isotype: IgG1k
 Reactivity: Human, mouse, rat
 Immunogen: Human CD4 protein
 Localization: Membrane
 Formulation: Antibody in PBS pH7.4, containing BSA and ≤ 0.09% sodium azide (NaN3)
 Storage: Store at 2°- 8°C
 Applications: IHC, Flow Cyt., ICC/IF, IP, WB
 Package:

Description	Catalog No.	Size
CD4 Concentrated	MC0237	1 ml
CD4 Prediluted	MC0237RTU7	7 ml

IHC Procedure*:

Positive Control Tissue: Tonsil, T-cell lymphoma
 Concentrated Dilution: 50-200
 Pretreatment: Citrate pH6.0, 15 minutes using Pressure Cooker, or 30-60 minutes using water bath at 95°-99°C
 Incubation Time and Temp: 30-60 minutes @ RT
 Detection: Refer to the detection system manual

* Result should be confirmed by an established diagnostic procedure.



FFPE human peripheral blood leukocytes stained with anti-CD4 using DAB

References:

1. The immunogenetics of primary biliary cirrhosis: A comprehensive review. Webb GJ et al. J Autoimmun 64:42-52,2015.
2. Alteration of CD4 T cell subsets in metastatic lymph nodes of human gastric cancer. Okita Y. Oncol Rep 34:639-47, 2015.
3. Distinct expression patterns of Toll-like receptor 7 in tumour cells and fibroblast-like cells in oral squamous cell carcinoma. Ni YH, et al. Histopathology 67:730-9, 2015.
4. Lymphaticovenous bypass decreases pathologic skin changes in upper extremity breast cancer-related lymphedema. Torrisi JS, et al. Lymphat Res Biol 13:46-53, 2015.

Doc. 100-MC0237
Rev. A