

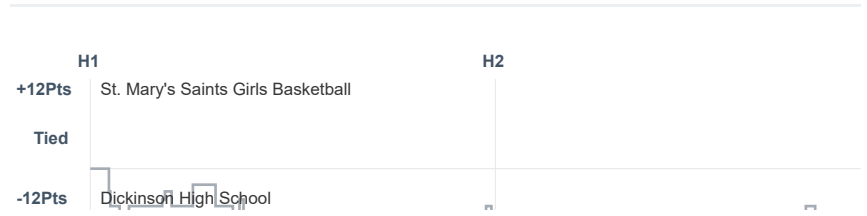
Box Score Report

SMCHS vs Dickinson - Feb 23, 2021 - W 49-45

Period Stats

| Team | 1 | 2 | Final |
|--------------|----|----|-------|
| SMCHS | 22 | 27 | 49 |
| DHS | 29 | 16 | 45 |

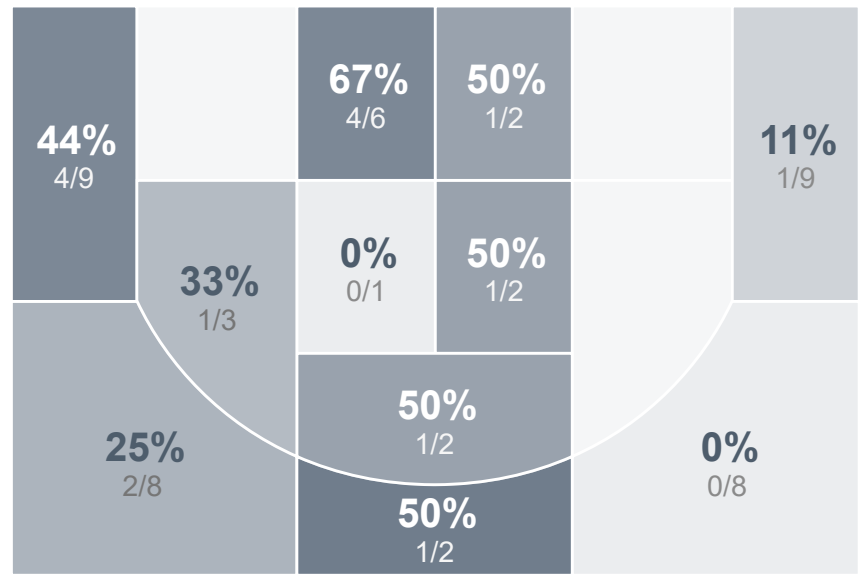
Run Graph



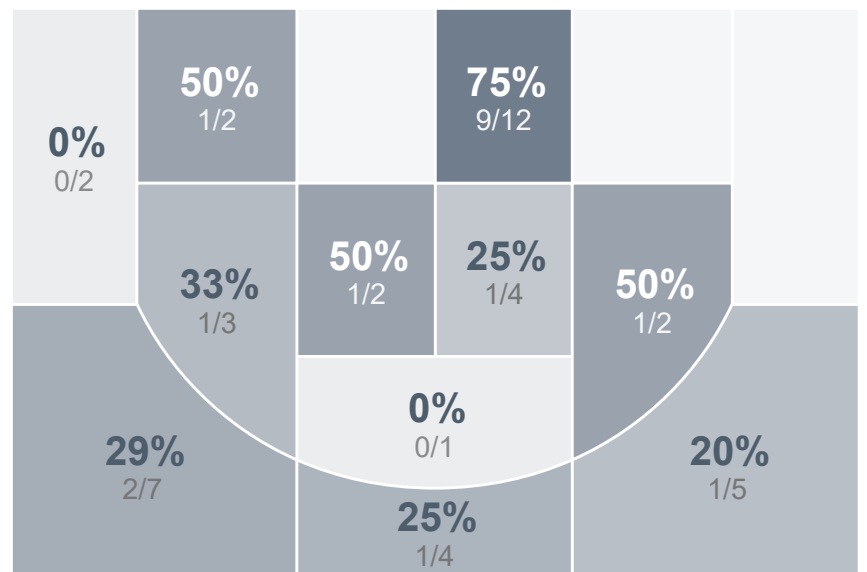
Team Stats

| | SMCHS | DHS |
|------------------------|-------|-------|
| Field Goal % | 30.8% | 40.9% |
| Effective Field Goal % | 38.5% | 45.5% |
| 2FG Made/Attempted | 8/16 | 14/26 |
| 2FG% | 50.0% | 53.8% |
| 3FG Made/Attempted | 8/36 | 4/18 |
| 3FG% | 22.2% | 22.2% |
| FT Made/Attempted | 9/11 | 5/8 |
| Free Throw Percentage | 81.8% | 62.5% |
| Points Per Possession | 0.78 | 0.69 |
| Transition Points | 2 | 13 |
| Points Off Turnovers | 18 | 5 |
| Second Chance Points | 6 | 5 |
| Points in the Paint | 12 | 22 |
| Offensive Rebounds | 7 | 5 |
| Defense Rebounds | 20 | 30 |
| Assists | 9 | 7 |
| Deflections | 8 | 6 |
| Steals | 8 | 7 |
| Blocks | 0 | 0 |
| Turnovers | 13 | 22 |
| Personal Fouls | 10 | 14 |
| Charges Taken | 0 | 1 |

St. Mary's Saints Girls Basketball



Dickinson High School



St. Mary's Saints Girls Basketball's Player Stats

| Name | Pts | FG | 3FG | FT | +/- | MINS | OREB | DREB | AST | DEFL | STL | BLK | TO | FOUL | CHG |
|---------------------|-----|------|-----|-----|------|------|------|------|-----|------|-----|-----|----|------|-----|
| #2 Lydia Spies | 13 | 3/11 | 2/8 | 5/7 | + 5 | 36 | 0 | 6 | 5 | 2 | 3 | 0 | 2 | 0 | 0 |
| #3 Maddy Miller | 4 | 1/6 | 0/5 | 2/2 | + 8 | 20 | 0 | 1 | 1 | 2 | 1 | 0 | 2 | 0 | 0 |
| #4 Grace Vetter | 3 | 1/4 | 1/4 | 0/0 | - 5 | 20 | 1 | 0 | 0 | 0 | 0 | 0 | 1 | 0 | 0 |
| #10 Brooke Haas | 0 | 0/5 | 0/3 | 0/0 | + 4 | 21 | 2 | 0 | 2 | 0 | 0 | 0 | 2 | 2 | 0 |
| #11 Peyton Goldade | 2 | 0/0 | 0/0 | 2/2 | + 1 | 4 | 1 | 0 | 1 | 0 | 1 | 0 | 1 | 0 | 0 |
| #13 Lexi Gerving | 4 | 2/7 | 0/4 | 0/0 | + 11 | 21 | 0 | 4 | 0 | 1 | 0 | 0 | 1 | 3 | 0 |
| #14 Allison Jackson | 0 | 0/2 | 0/2 | 0/0 | + 5 | 4 | 0 | 0 | 0 | 1 | 0 | 0 | 0 | 0 | 0 |
| #22 Mykie Messer | 23 | 9/14 | 5/7 | 0/0 | + 4 | 35 | 2 | 5 | 0 | 1 | 2 | 0 | 3 | 4 | 0 |
| #24 Eden Schlinger | 0 | 0/3 | 0/3 | 0/0 | - 13 | 26 | 1 | 3 | 0 | 1 | 1 | 0 | 0 | 1 | 0 |

Dickinson High School's Player Stats

| Name | Pts | FG | 3FG | FT | +/- | MINS | OREB | DREB | AST | DEFL | STL | BLK | TO | FOUL | CHG |
|---------------------|-----|------|-----|-----|-----|------|------|------|-----|------|-----|-----|----|------|-----|
| #2 Symone Beld | 11 | 5/9 | 1/3 | 0/0 | + 2 | 33 | 0 | 7 | 1 | 1 | 2 | 0 | 4 | 0 | 0 |
| #4 Reese Hauck | 9 | 4/6 | 0/0 | 1/2 | + 2 | 32 | 1 | 5 | 1 | 0 | 1 | 0 | 4 | 3 | 0 |
| #12 Taya Hopfauf | 8 | 2/12 | 1/9 | 3/4 | - 4 | 31 | 0 | 6 | 2 | 2 | 1 | 0 | 2 | 3 | 0 |
| #13 Sydney Binstock | 3 | 1/2 | 1/1 | 0/0 | - 1 | 24 | 0 | 4 | 1 | 1 | 1 | 0 | 3 | 5 | 0 |
| #20 Caton Percy | 0 | 0/1 | 0/1 | 0/0 | - 4 | 5 | 0 | 0 | 0 | 0 | 0 | 0 | 1 | 0 | 0 |
| #22 Emily Ash | 5 | 2/7 | 1/4 | 0/0 | - 8 | 26 | 2 | 2 | 0 | 0 | 1 | 0 | 5 | 2 | 0 |
| #32 Paige Balliet | 9 | 4/7 | 0/0 | 1/2 | - 7 | 36 | 2 | 4 | 2 | 2 | 1 | 0 | 3 | 1 | 1 |