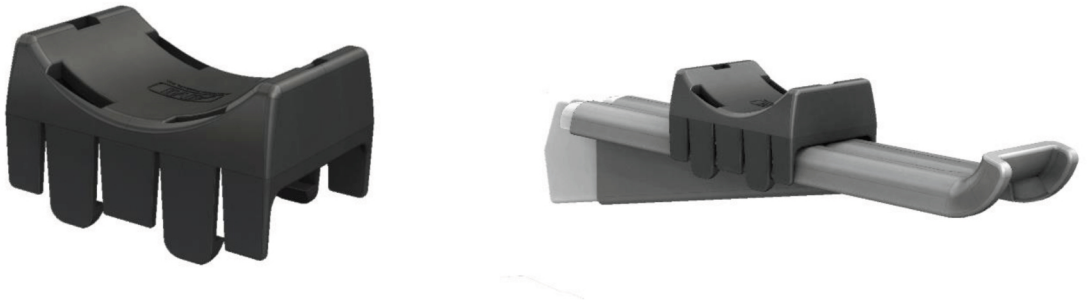




AMI Power Products, Inc.

POLYMER CABLE INSULATOR SADDLES



Polymer Cable Saddles are made from injection molded glass-filled Polymer resin to create a strong, non-conductive cable saddle for use with underground cable support arms in vaults and manholes. The fiber-reinforced polymer saddles are non-corrosive for long-term durability. Emits no harmful smoke. Secures the cable tightly to the saddle.

Part Number	Length (in)	Width (in)	Height (in)
PCS-AEP	4.5	3.0	2.65