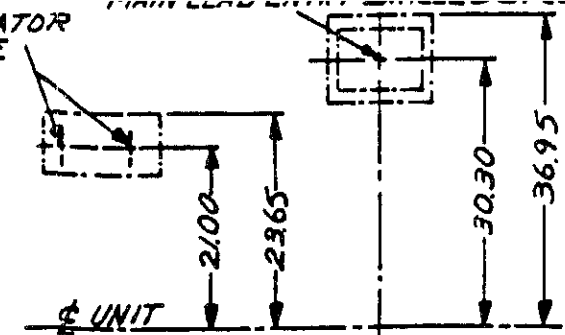


GIB BLOCK INSTALLATION SKETCH

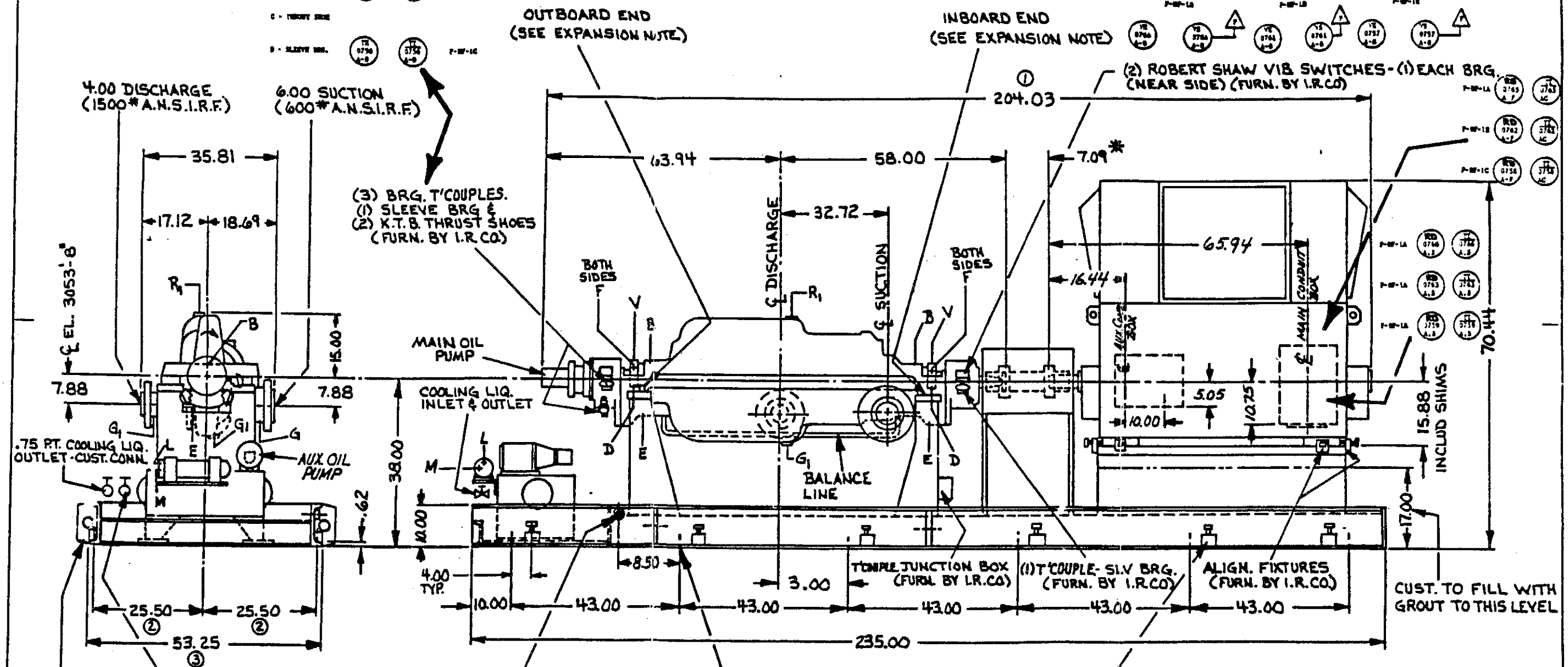
BEDPLATE LIFTING NOTE:

DRIVER IS TO BE REMOVED WHEN LIFTING BEDPLATE. WHEN LIFTING PUMP AND BEDPLATE TOGETHER, SLING BEDPLATE FROM ALL SIX LIFTING EYES PROVIDED. FAILURE TO DO THIS MAY RESULT IN PERMANENT DEFORMATION OF BEDPLATE.

SPACE HTR. & STATOR R.T.D. ENTRY TO BE DRILLED BY CUST.



- A - SLEEVE BRG. (3177 A-1) (3177 A-1) P-W-1A
- B - THRUST SHOE (3178 A-1) (3178 A-1) P-W-1B
- C - THRUST SHOE (3178 A-1) (3178 A-1) P-W-1C
- D - SLEEVE BRG. (3179 A-1) (3179 A-1) P-W-1D



6 LIFTING LUGS (SEE NOTE) .75 P.T. COOLING LIQ. INLET-CUST. CONN. 150 PT. FOR DRAIN 12 HOLES - 1.00 DIA. FOR .75 FOUNDATION BOLTS 12 LEVELING BLOCKS (FURN. BY I.R.CO.) WEIGHT 14,600* REFERENCE DRAWINGS NOTES: L.M. 62385067 SHT 2-5

REV	DRN	CKD	APP	REV	DRN	CKD	APP	REV	DRN	CKD	APP	DRIVER MFG.	SERVICE BOILER	CUSTOMER	I-R ORD. NO.
OC	R _{CP}	R _{CP}	FL	OB	R _{CP}	FL	FL	OA	DS	FL	FL	WESTINGHOUSE	FEED WATER	FRU-CON CONSTRUCTION CORP.	002-35778
DATE	20SE89	DATE	10AUB9	DATE	21JY89							TYPE	LIQUID	ORD. NO.	708490.01-000016
												FRAME	FEED WATER	CUST. TAG NO.	P-BF-1A, 1B, 1C
												H.P.	ROTATION		080-GA-001-01
												R.P.M.	BEARINGS		
												DWG. NO.	THRUST		