



Since 1948 Exploring the Wonderful World of Beekeeping Together

The Bee Buzzer

Monthly Publication of the

Northeastern Kansas Beekeepers' Association

VOLUME 76, NUMBER 1

EDITOR: TIM MARSHALL

January 2024

General Meeting

Monday, January 22, 2024 (7:00 p.m.)

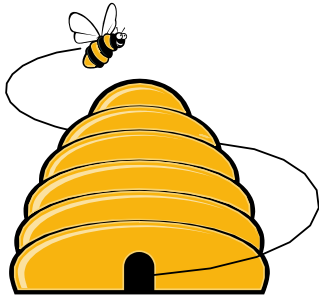
(Zoom ONLY-website for updates)

“In the comfort of your own home”

Download the Zoom App and watch from your computer, smartphone, or tablet

Log in instructions will be posted on the www.NEKBA.org website.

Main Program: Bee Foraging Behavior by Dr Olivia Bernauer. Dr Olivia Bernauer is a USDA NIFA postdoctoral fellow at the University of Wisconsin, investigating how future global conditions may impact bee nutrition, pollination, insect foraging behavior as well as other aspects.



Beelines

By President Cheryl Burkhead

Welcome 2024 and a new year of beekeeping! I hope your bees are doing well this winter. I'd like to introduce myself as your new president. Most of you may already know me as I have been an active member since 2014. I have served as Vice President - Honey Plants and have served on our Education and Fun Day committees. Most recently, I was editor of our monthly newsletter, *The Bee Buzzer*.

It's a New Year, a new season, and a fresh start! Perhaps many of you have made your New Year's resolutions. I hope you have included your beekeeping in that list. I have one on my list every year, which is, 'taking better notes'. But like many resolutions, I start out with good intentions but I slowly fall into the same pattern of complacency. Maybe you'd like to better manage your own colonies, which could involve many things: monitoring for Varroa and treating more judiciously; doing post-treatment mite washes; performing more frequent inspections; swarm control....and the list goes on.

As a New Year's goal as a member of NEKBA, I hope you will decide to become more active in our club to increase your learning opportunities. Volunteer your time to mentor. Visit our open apiary. Make new acquaintances and help other less-experienced beekeepers.

I owe my success as a beekeeper to this very club. I chose to become involved, to attend every monthly meeting, to go to beginner classes for multiple years, and actually present some of the curriculum. I asked questions and I sought answers. I enjoy our Fun Day every June and continue to learn about our honey bee from members of our club and numerous guest speakers; many of which have spent the majority of their lives studying the honey bee. As with any endeavor in life, you get out what you put in.

This club is here for YOU, its members, to support each one of you and help you care for your bees. We are here to teach and inform you in the use of best practices in beekeeping. Please let us know your needs, what we can do to improve, and how we can best serve you in your beekeeping journey. I hope you will choose to attend our NEKBA gatherings and participate. Keeping bees can sometimes be a stressful endeavor. We need to be supportive of each other and be respectful of one another. I am eager and optimistic to serve as your new president.



2024 Meeting Dates:

- January 22, 2024 (**Zoom meeting only**)
- January 27, 2024 Year 2 and Beyond Beekeeping Class (Flory Bldg.)
- February 19, 2024 Monthly Meeting (Bldg. 21)
 - February 24&25, 2024 Beginning Beekeeping Class
 - June 1, 2024 Fun Day!!



Beekeeping Classes

This year the Northeastern Kansas Beekeepers Association is proud to announce we will be having the Beginning Beekeepers' class 2 times this year! All classes will be held in Lawrence at the Douglas County Fairgrounds in the Flory Building. The **Beginning Beekeeping class** will be taking place on Saturday, February 24th and Sunday, February 25th.

This year the more experienced class will be first, **Year 2 and Beyond class** on Saturday, January 27th. So be sure to sign up and look forward to seeing you there!

The cost of the classes is \$55.00 per person and each participant will receive a notebook filled with lots of useful information along with slides from each presenter with space for taking notes. See the January program in this month's newsletter. February's program will be in next month's newsletter. You may see the complete program for each class by going to the Northeastern Kansas Beekeepers website at [HOME \(nekba.org\)](http://HOME(nekba.org)). You may register and pay for the classes online. If you wish to pay with check, you may use the postal service and mail to NEKBA, Attn: Robert Burns, Treasurer, 7601 W. 54th Terr., Shawnee Mission, KS 66202. Please specify which class you are attending or you may go online and print the registration form and include it with your check.

We have many knowledgeable and experienced beekeepers who are freely giving of their time to get you started off on the right foot as a new beekeeper. Come with questions and the expectation of gaining beekeeping knowledge. If you have any questions; call, text, or email Kristi Sanderson at 913-768-4961. Email - Sandersonk09@gmail.com [HOME \(nekba.org\)](http://HOME(nekba.org)) for additional information and to register.

Kristi Sanderson, Special Events Coordinator

Ol' Bee Gal

Welcome to all our new officers! You are appreciated. If you have questions, ask. If you want to try something new, ask. If you want a raise, ask! (LOL)

There are only a few things that are hard and fast rules in beekeeping. Bees are living beings and have the needs of every living thing, food, water, shelter. How that is accomplished can vary greatly and is dependent upon the environment in which they are growing. Bees in the southern United States need no fewer resources than the bees in the north, they just have different flowering seasons in which to gather their nectar. Here is my list of nearly hard and fast beekeeping tips.

1—Beekeeping is regional. Trust information that is supported by experts in your area. Get involved with local beekeeping groups to glean that regional information.

2—Follow the science. If simple will work, the bee scientists will have tried it and you will know from controlled experiments that the procedure is a valid choice. They don't keep the good stuff secret.



3—**Learning is never ending.** The old guys may have been doing it that way for 50 years, but most things have changed in 50 years and so has beekeeping. The environment in which the bees find themselves is fraught with many more perils than ever before; fungicides, pesticides, mites, beetles, weird weather and more. Keep learning to be the best bee steward you can be. The more you know, the more you realize there is to learn.

4—**Immerse yourself in bees.** Particularly in the first years of beekeeping, those girls have a LOT to teach you. Read all you can, go to classes, go to meetings, study, and most importantly, OBSERVE what the bees are doing in the hive, around the hive, at the water bowl, on the flowers....everywhere you can. Beekeeping is not for those who what to “Let them be.”

5—**Don’t buy used equipment!** As one of my favorite beeks says, I bought every problem I ever had. There are a few exceptions to this rule. If you know the person selling very, very well and they have unimpeachable ethics, you could probably take the chance. But some of the worst bee diseases are carried on old equipment and no amount of bleach water, blow-torch scorching, or new foundation will eliminate the disease spores. If you can’t afford new equipment, keep fewer hives until you can.

6—**Plan ahead.** Keep records. Don’t procrastinate. Using the phrase “I’ll remember,” is more and more unlikely to be accurate the older we get. Write it down.

7—**Know the difference between a bee buddy and a mentor.** A mentor is a proven, educated, experienced beekeeper. A bee buddy is someone who has had bees a few years, may know more than you, and is fun to talk to about bees (you can both make other people tired of hearing about bees but can enjoy each other’s company). Trust the mentor, verify whatever the bee buddy might suggest before you put it into action. Warning! There are quite a few people calling themselves mentors who are really bee buddies.

8—**Avoid fad beekeeping.** You can buy a Flow Hive for very little money now, used. They were not the great invention everyone hoped. Use Langstroth equipment. Once you have learned beekeeping, experiment with whatever you’d like to try. Each experiment will probably teach you something.

9—**Treat for mites.** Don’t want to use chemicals? That’s possible, but you are going to have to know and understand the mite cycle and how to manage their numbers or your bees will die. You cannot ignore mites.

10—**Learn what’s blooming** and what’s within flying distance of your hives. Flowering plants and bees evolved together. You need them, they need you.

Hap-Bee New Year. Join the learning. **Becky Tipton**

**SUBSCRIBE TO A MONTHLY BEE MAGAZINE.
STAY INFORMED.**

[Bee Culture Magazine \(link\)](#)

[American Bee Journal \(link\)](#)

Use the links to subscribe directly...annual subscription rates under \$6 per month for both! This is fantastic information right at your fingertips. As part of your beekeeping experience, it's important to be up to date with the trends in bee biology, honey processing, the industry, and much more!



ASK QUINBY & REMI

Quinby and Remi- We are on the way to the kennel! Our humans, Joli and Cecil, are on their way to the North American Honey Bee Expo. They haven’t been to a national beekeeping meeting in many years. Joli got the bright idea to take her honey pot collection and a lot of her “treasures” with bees on them. She is also taking her bee jewelry! At least 100 pairs of earrings and pins, so many pins, bracelets and more!! Cecil has gone through his bee books and magazines and has boxes of them ready to sell. A lot of our Kansas beekeepers are going to this meeting.

The great part about attending meeting is learning from others. We can bring new ideas to the beekeepers of the club. We need new ideas and new volunteers! We really need new and more volunteers.

This spring you can locally attend our Kansas Honey Producers meeting in Salina- watch the buzzer for dates and the program.

Mark your calendars for the 2024 Funday! I am the new Funday chair and I am asking for volunteers! While we have a great committee, I would like to see it expanded. Many hands make light work! We've added a few new folks but would like to add some more. Please contact Joli Winer at 913-593-3562 (call or text) or email at heartlandhoneyks@gmail.com. Right now, we are at the brainstorming stage- we need you, please step up! We plan to have a meeting later in January!

Guest speakers this year are Dr. Jennifer Tsuruda, Dr. Judy Wu-Smart, Dr. Autumn Smart, Blake Shook and Rogan Tokach!! A great line up! Again, mark your calendars so you will have no excuse.

Quinby and Remi would love to answer your questions. Contact them my emailing their owner at heartlandhoneyks@gmail.com.



The NEKBA Beeyard

Plans are underway to increase the hives to 10! Watch the newsletter and the NEKBA Facebook for a workday to put equipment together. This will be an exciting spring for the club to share in the knowledge of our open apiaries. There's nothing like the learning from an experienced beekeeper.

This year we are also looking for experienced beekeepers to help with mentoring at the club hives. If you are interested in helping, please contact Joli at 913-593-3562 (call or text) or email at heartlandhoneyks@gmail.com. With your help we can make these hives a fantastic educational opportunity for our members.

Tips for January

- Begin your recordkeeping for 2024 calendars are already ½ price so get one that you can write on. Vow to keep track of when different plants bloom in your area, if you fed, how your bees did, if you replaced any equipment etc.
- Check a beekeeping book out at the library.
- Build or repair any equipment.
- Order your queens and package bees as soon as possible.
- Check the lids on your hives; make sure they have a heavy rock or a cement block on top. We have had some fierce winds this winter.
- Heavy snows can block entrances preventing bees from necessary cleansing flights. Brush snow from the entrance of the bee hive.
- Plan next year's garden to include some nectar producing plants that have not been treated with neonicotinoids
- Remove dead-outs and clean or store any equipment.
- Review your successes and challenges from last year.
- Check food stores in your hives.
- Renew your membership, send in your dues-you can do it online now by going to nekba.org
- Attend our meetings and beekeeping classes-share with a friend and get them started this year!



Military/Veterans Apprentice Program

I am Buck Bradley. I will be continuing the excellent work that Andy Nowachek and his team have done over the last few years. I was born and raised in Ottawa, Kansas. After a 21-year career in the Marine Corps, I recently returned home from North Carolina and am now settled in the Baldwin City area. I have been keeping bees for the last several years and had up to 25 hives before moving back home.

In following newsletters, I will share more information on the NEKBA Military/Veterans

Apprentice program and the connection between veterans and beekeeping that dates back to the end of World War I.

I hope everyone had a good holiday season and that you have your bee equipment ready for Spring.

Buck Bradley, Military/Veteran Appr. Liaison



Honey Plants

New Year's greetings! I would like to briefly introduce myself to those of you who don't know me. I have been a beekeeper and member of NEKBA since 2009. I was originally introduced to beekeeping through my sister. Gardening had always been my main interest but I quickly realized that beekeeping is an essential part of gardening. These days I enjoy learning how floral sources and honey bees are dependent on each other and work together to co-exist.

There are typically not any floral sources for honey bees to take advantage of during the month of January. Some days our bees might take cleansing flights. Foragers may even search for pollen. Pollen is a critical protein source for feeding those larvae. While the colony may have stored lots of pollen in cells adjacent to the brood nest, they still prefer fresh pollen. We are fortunate, in Northeast Kansas, to be rich in pollen sources. We also have a large variety of sources available. That variety ensures good nutrition for the larvae.

We can look forward to the native Ozark Witch Hazel blooms in early February. There are two other varieties of Witch Hazel native to the Eastern and Southern United States, with different bloom times, and they can be planted in Northeast Kansas. The Ozark variety will grow quite well in our area. Silver Maples will follow Witch Hazel. Silver Maples can bloom any time from Mid-February to early March. Watch for greenish colored pollen in pollen baskets. Pussy Willows can begin blooming in late February but typically they wait until March. Pussy Willow pollen is a lemon color.

Meanwhile, beekeepers can focus on the precipitation our area receives during the critical winter months. After last summer and fall's dry spells that left our area in drought conditions, the winter rain and snow will help alleviate stressful conditions in trees and shrubs and ensure plentiful blooms when the time is right. Stress from drought and the warm fall temperatures followed by a quick drop in temperature, such as our area experienced this fall, can cause damage to trees. You may not see the results of this stress until a tree mysteriously dies sometime later. Tissues that carry food throughout the tree may have suffered damage from lack of moisture followed by the sudden drop in temperature. A signal that this may have occurred is a tree holding on to brown, withered leaves longer than typical.

We can also focus our attention on adding additional floral sources. If you have a gap in your honey bee nectar and pollen sources, now is the time to research and find fillers. This is the perfect time to start native plant seeds. The 15th Annual Kaw Valley Seed Fair will be held on February 17th at the Douglas County Fairgrounds, Bldg. 21. This event starts at 8:00 a.m. and always draws a large crowd. There will be a seed swap so bring seeds, properly labeled, if you have them and take anything that you need. This event is free and open to the public.

Seed catalogs may have arrived in your mailbox, or you can look online. Try to purchase as local as possible. In Missouri, a reliable source is Missouri Wildflowers Nursery, www.mowildflowers.net. Their catalogs and website are wonderful reference tools. You can also purchase native bloomers and heirloom garden seeds from www.thebuffaloseedcompany.com. They are in Shawnee, KS. You can order online or purchase seeds at various locations including Cottin's Hardware, 1832 Massachusetts St., Lawrence, KS. Both companies are family businesses.

Another free resource, for seeds, is the public library. Both the Lawrence Public Library and the F.L. Schlage Library, in Kansas City, Kansas, have seed catalogs. A library card is required at both libraries. The library cards are free and you don't have to be a resident.

The USDA has upgraded the 2023 USDA Plant Hardiness Zone Map. <https://planthardiness.ars.usda.gov/pages/map-downloads>. The southern half of Northeast Kansas has been reclassified up to Zone 6b, -5 to 0 degrees Fahrenheit winter temperatures possible. The northern half of

Northeast Kansas has been upgraded to 6a; -10 to -5 degrees Fahrenheit winter temperatures possible. Be sure your purchases can withstand those low temperatures. I will conclude with this thought. Some plant species do not thrive in our Kansas climate due to temperature extremes and erratic precipitation. It's not our winter that's too cold, it's the plants' inability to tolerate the wide fluctuations in temperature and moisture. Yes, life here can be tough. **Jo Patrick, Honey Plants Chairman**



Third Thursday Making More Money From your Hives- Making Creamed Honey and Infused Honey - Joli Winer presents. Joli will teach you how to make

creamed honey using freeze dried powered fruits, nuts, and natural creamed honey. The Kansas Honey Producers Association- 3rd Thursday, Making More Money From your Hives, is at 7pm CST, Thursday, January 18, 2024. Join us. To register for the meeting and to get the link go to our website at www.kansashoneyproducers.org and click on the Making More \$\$\$ button-it will send you to a zoom program to register and you will immediately get the zoom link in your email. If you have registered before

you still may have to register again to get the link.

If you have something that you would like to share with the group, please call or text Joli at 913-593-3562 or email heartlandhoneyks@gmail.com

You can get a one-hour educational credit for GPMB for attending these presentations.

This is sponsored by the Kansas Honey Producers Association, but you do not have to be a member. If you would like to join, membership is \$15 per year.

These programs are being recorded and will be available at the www.kansashoneyproducers.org website.

Spending more time inside because of the cold? Don't forget the club website has great information and videos on it as well!!

Monthly Tips: <http://www.nekba.org/monthly-tips.html> Videos: <http://www.nekba.org/video-listing.html>

Honey Pot

Hot Honey Chicken Meatballs

1 lbs. ground chicken

½ c. breadcrumbs

1 egg, beaten

2 tsp. Korean chili pepper flakes

1 tsp. kosher salt

Scallions, sliced, for garnish

Hot Honey

½ c. honey

2 Tbsp. apple cider vinegar

1 tsp. crushed red pepper flakes

Preheat air fryer to 380 F. Mix chicken, breadcrumbs, egg, chili pepper, & salt. Make 16-1" meatballs and place in air fryer. Cook 8-10 min, shaking halfway through cook time. While meatballs are cooking, combine hot honey ingredients in a microwave-safe dish and heat for 1 ½ min. Remove meatballs from oven and toss with the hot honey and scallions. Serve immediately.

You may also bake in oven on a sheet pan at 375 F for 10-12 min. instead of air fryer if you prefer.





Northeastern Beekeepers' Association
Year 2 and Beyond Beekeeping Class
January 27, 2024
Douglas County Fairgrounds, Flory Bldg.

| | |
|-------------|--|
| 8:30-8:50 | Registration |
| 8:50-9:00 | Introduction Kristi Sanderson |
| 9:00-9:45 | Winter & early spring inspections Matthew Brandes Late winter inspections (January)—Hive hefting, when & how to feed hard sugar cakes, what temps can brood frames be pulled out, accessing dead hives Early spring (March) Why & how to feed, queen health, colony populations, varroa mite levels, cleaning bottom board & propolis off of frames, hive box reversals or not, frame replacement order after inspection, removing entrance reducers & mouse guards |
| 9:50-10:50 | Splitting, requeening & swarming Kristi Sanderson Finding the queen, care of queen, moving the split preventing swarms, what to do once hive has swarmed, cutting queen cells or not |
| 10:50-11:10 | Break/vendor time |
| 11:10-11:55 | Fall management & moving hives Jo Patrick Preparing bees for winter survival after the honey has been removed Mite treatments, feeding Moving hives on a small scale |
| 11:55-1:25 | Lunch (on your own)/vendor time |
| 1:25-1:55 | Producing comb honey & Supering Bob Burns Foundation, when to super, foundation vs comb |
| 2:00-2:45 | Extracting honey Buck Bradley The ins and outs of extracting will be demonstrated |
| 2:45-3:05 | Break/vendor time |
| 3:05-3:50 | Spotting brood diseases Cheryl Burkhead Diagnosing EFB or Parasitic Mite Syndrome and other brood problems |
| 3:55-4:40 | Wax rendering and simple cosmetic uses Joli Winer Processing wax capping into usable wax for lotion bars and lip balm |
| 4:45-5:00 | Closing Remarks Kristi Sanderson |

NORTHEASTERN KS BEEKEEPERS' ASSOC. 2024 MEMBERSHIP APPLICATION

NAME _____
ADDRESS _____
CITY _____ STATE _____ ZIP+4 _____ + _____
PHONE _____ Email Address _____

I would like to receive the newsletter, *The Buzzer*, by email Yes _____ No _____

| | | |
|---|----------------|-------|
| Membership Northeastern KS Beekeepers per year (July-Dec. \$12.50) | \$25.00 | _____ |
| Additional family members wanting voting rights \$1.00 per person | \$1.00 | _____ |
| Additional family member's name _____ | | |
| (Youth Membership (18 years of age or under) | \$12.50 | _____ |
| Membership for Kansas Honey Producers Association | \$15.00 | _____ |
| American Bee Journal (<u>discounted rate through association</u>) | 1 year \$29.75 | _____ |
| Bee Culture Magazine (or subscribe online at www.BeeCulture.com) | 1 year \$34.00 | _____ |
| Scholarship / Military/Veteran's Appr. Donation | | _____ |
| | Total | _____ |

Make checks payable to: NEKBA or Northeastern Kansas Beekeepers Assn.

Mail to: Robert Burns, 7601 W 54th Terr., Shawnee Mission KS 66202 ph. 913-481-3504, rburnshoney@gmail.com

You may join, re-new, register, donate and pay online at www.nekba.org

MENTORING-SWEET PRAIRIE HONEY

Need help with your hives? -Spring inspections, installing packages, making splits, queen evaluation, diagnosis of pests and diseases, mite monitoring and treatment, etc. I can help you with your beekeeping needs! I am a certified master beekeeper with 30 + years of beekeeping experience. I will leave you with a written course of action after our session at your hives. Call or text at 913-768-4961 or email Kristi Sanderson at sandersonk09@gmail.com for pricing and appointment times.

BEEKEEPERS.COM

Beekeepers.com (Jordy's Honey Company) in Lenexa, KS . Beekeepers.com is your only local full-service beekeeping store. We carry a full line of Beekeeping Supplies, Protective Clothing, Bottles, Bee Packages, Nucs and Queens. Visit our web site Beekeepers.com to view our entire line of beekeeping supplies. You can also shop in-person at our store in Lenexa. We ship queens directly to YOU! Order at QueenBees.com . Queens available March - October. Our hours are Monday-Friday 9:00-4:00, Saturday 9:00-12:00. You can find our honey at The Overland Park Farmers Market. **Robert Hughes**, 14054 W 107th St, Lenexa, KS 66215, 913-681-5777 or email Info@Beekeepers.com.

COTTIN'S HARDWARE & RENTAL

Cottin's Hardware stocks a full line of beekeeping equipment year-round including items manufactured by Harvest Lane Honey, Little Giant, and Bug Baffler. Products include hives, supers, frames, foundations, extractors, tools, and protective apparel. We also stock a full line of Home Brewing Mead Making supplies. Located in Lawrence, KS at 1832 Massachusetts Street (South of Dillon's). We are open Monday - Friday 7:30 am - 6:00 pm, Saturday 8:00 am - 5:00 pm, and Sunday 10:00 am - 5:00 pm. You can follow us on Facebook, Instagram, and Twitter. Call us at 785-843-2981 or email us at hardware@sunflower.com

CB'S HONEY

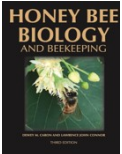
CB's Honey is now accepting orders for 5 frame nucs. Queens will be marked upon request. Don't delay as I make a limited number and sell out every year. Order your 2024 Nuc by completing form online at [CB's Honey 2024 Nuc Order Form \(google.com\)](#) or via . [CB's Honey | Facebook](#). Pure raw Kansas honey available in 5 gal buckets. Located just SE of Topeka. 4521 SE 61st Street, Berryton, KS 66409. Call or text Cheryl Burkhead at 785-224-9077 or email @ cherylbhoney@gmail.com

CEDAR RIDGE BEES

5 Frame Nucs for Sale. We are your local Premier Bee Products Dealer specializing in plastic foundation made entirely in the U.S.A. We sell bucket feeders and other bee equipment. Call or text Philip Knaus at 785-581-4216 or contact us at cedarridgebeehives@gmail.com - Check out our bees and products at www.cedarridgebees.com Cedar Ridge Bees 585 N 500 Rd, Overbrook, KS 66524

T CREEK BEES AND HONEY – Tecumseh/Berryton, KS

Tecumseh Creek winds its way through the home yard lending its name to the brand. Located between Lawrence and Topeka, T Creek offers 5-frame nucs, online honey sales, custom honey packing, wholesale delivery to the Topeka / Lawrence area, 5-gallon buckets of honey, and drop-shipping wholesale service to rural grocery stores and agritourism destinations. Visit www.tcreekbees.com Email: tcreekbees@gmail.com or find the bees on Facebook. Order 2024 5-frame nucs by visiting the website and completing the nuc order form. Owner: Tim Urich. LLC in the State of Kansas and licensed by Kansas Dept of Ag.



Honey Bee Biology AND BEEKEEPING, Third Edition, Dewey M. Caron and Lawrence John Connor, \$90 postage included. *This book should stay on the dashboard of every beekeeper's truck. It's that good, and that necessary. Kim Flottum, Bee Culture.* This comprehensive textbook easily replaces many beginner books while adding comprehensive details of bee biology essential to becoming a successful beekeeper and student of the honey bee. First released in 1999, *Honey Bee Biology and Beekeeping* is widely accepted as a major textbook of Apiculture (beekeeping). Beekeepers and bee clubs use it to teach other beekeepers. Universities use it to teach college students bee biology and beekeeping. It concentrates on the 'why', 'how' and 'when' of beekeeping. It explains bee and beekeeping basics in a manner meaningful to people who lack an extensive background in biology. Yet it is not oversimplified and provides a meaningful source of beekeeping information for the informed beekeeper. The Third Edition has been carefully edited, updated, and expanded to 480 pages. New chapters have been added, as have colorful new graphics and photographs. The Glossary has also been expanded. **Wicwas Press LLC Kalamazoo, MI 49001 - www.wicwas.com**

The Association does not endorse nor evaluate the advertisements, products or services offered in the Buzzer

Northeastern Kansas Beekeepers Association
Robert Burns, Treasurer
7601 W 54th Terr
Shawnee Mission KS 66202-1129

Address Service Requested

Meeting

Monday, January 22, 2024 (Zoom only)

The Northeastern Kansas Beekeepers' Association

Membership is open to anyone interested in bees or bee culture. Dues are \$25.00 per calendar year (December 31-December 31) for the first in the family joining. Those joining in July or later in the year may pay \$12.50 for ½ year. Additional members of that family wanting voting privileges shall be assessed dues at \$1.00 per year. Youth memberships (18 years of age and younger) are \$12.50 per year. Please submit new memberships and renewals to the treasurer or on-line at www.nekba.org.

The Bee Buzzer is the official publication of the Northeastern Kansas Beekeepers' Association, Inc. and is published monthly. Commercial ads are accepted in the newsletter for a fee; non-commercial ads by paid members are accepted & are free.

The library of the association is free to all members. Books may be checked out at the meetings and kept for a period of 30 days. The bee publications, *The American Bee Journal* and *Bee Culture* can be subscribed through the treasurer or on-line. The *American Bee Journal* is offered at a discount through the association only.

The Association meets each month, generally on the third Monday at 7:00 p.m. except during the months of January and July. Beekeeping classes will tentatively be held in January and February for 2024. This is a non-profit organization; elected officers serve without pay. Everyone is invited to attend the meetings. Check *The Bee Buzzer* or website at www.nekba.org each month for the actual date, time, and location. If the weather is bad, call an officer or check the website to find out if the meeting will be held or canceled.

2024 Officers

| | |
|--|--------------|
| President: Cheryl Burkhead , 4521 SE 61st St., Berryton, KS 66409 cbfritz@aol.com | 785-224-9077 |
| 1st VP (Program Chair): Matt Brandes , 4741 Highway K 68, Wellsville, KS 66092 matthew@n523rv.com | 913-706-3087 |
| 2nd VP (Librarian): Michael Hewitt , 9221 SE Berryton Rd, Berryton, KS 66409 garlicranch69@gmail.com | 785-230-0827 |
| 3rd VP (Honey Plants): Jo Patrick , 611 E Sheridan St., Olathe, KS 66061 brain-patrick@sbcglobal.net | 913-645-8947 |
| Secretary: Elaine Ellenz , 17650 W 113 th St., Olathe, KS 66061 elaineellenz@gmail.com | 913-515-1607 |
| Treasurer: Robert Burns , 7601 W 54 th Terr., Shawnee Mission KS 66202 rburnshoney@gmail.com | 913-481-3504 |
| Youth Scholarship Chair: Dale Spurlin , 24964 160 th Ct., Leavenworth, KS 66048 LightedPathHoney@outlook.com | 913-775-0997 |
| Military/Veteran Appr. Liaison: Buck Bradley , 11 E 900 Rd., Baldwin City, KS 66006 buckusmc00@hotmail.com | 785-248-1005 |
| Editor: Tim Marshall , 4736 Halsey St., Shawnee, KS 66216 flyinmonk@yahoo.com | 816-392-6854 |

Special Events Coordinators:

| | |
|--|--------------|
| (Class): Kristi Sanderson , 1252 E Frontier Ln., Olathe, KS 66062 sandersonk09@gmail.com | 913-768-4961 |
| (Funday): Joli Winer , 19201 S Clare Rd, Spring Hill, KS 66083 heartlandhoneyks@gmail.com | 913-593-3851 |
| Webmaster: Robert Burns , 7601 W 54 th Terr., Shawnee Mission, KS 66202 rburnshoney@gmail.com | 913-481-3504 |

Visit on-line at www.nekba.org. Save time. Join, re-new, or register.