



The largest online source for quality affordable house designs with 28,932 house plans.

[Live Chat](#)

CALL 1-888-705-1300
For Advice and Ordering

[Sign In](#) [Register](#)
[Saved Plans](#)

[SEARCH](#)

[PLANS](#)

[EDITOR'S BLOG](#)

[RESOURCES](#)

[FLEXAHOUSE](#)

[MY WORKSPACE](#)

[PROFESSIONAL BUILDERS](#)

Plan Details



PLAN # 310-616

<u>Square Feet</u>	2387
Bedrooms	3
Baths	2.5
Garage Stalls	3
Levels	1
Width	70'
Depth	69'

[ShareThis](#)

**BEST PRICE
GUARANTEE**

**5 Copy Set
Reproducible
Master** **\$800**
\$1,070

[See all pricing Options](#)

[Add Plan to
Shopping Cart](#)

How much will it cost to build?

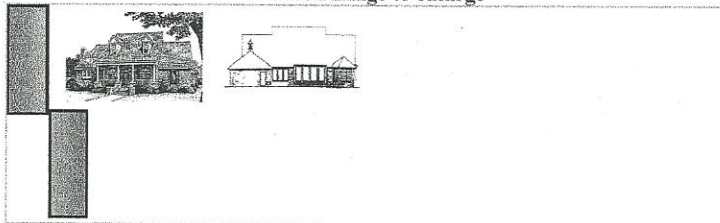
[Cost-to-Build](#)

[Save Plan](#)

This 2387 square feet farm style 3 bedroom, 2.5 bath with 3 garage stalls falls in the 2000-3000 square feet range. It also combines elements from the country, traditional, craftsman styles.

The floor plan features covered front porch, split bedrooms, great room/living room, oversized garage, covered rear porch, walk-in closet, master sitting area, volume/vaulted ceiling, main floor master bed & bath, peninsula/eating bar, side-entry garage, bonus/play/flex room, nook/breakfast area/dining, den/office/study/computer, main floor bed & bath, walk-in pantry/cabinet pantry.

Click on image to enlarge



Photographs may show modified designs.

[More Plans by this
Architect/Designer](#)

[Email a Question](#)

[Email Plan
Print Plan](#)

FLOOR PLANS

Main Level
[REVERSE PLAN](#)

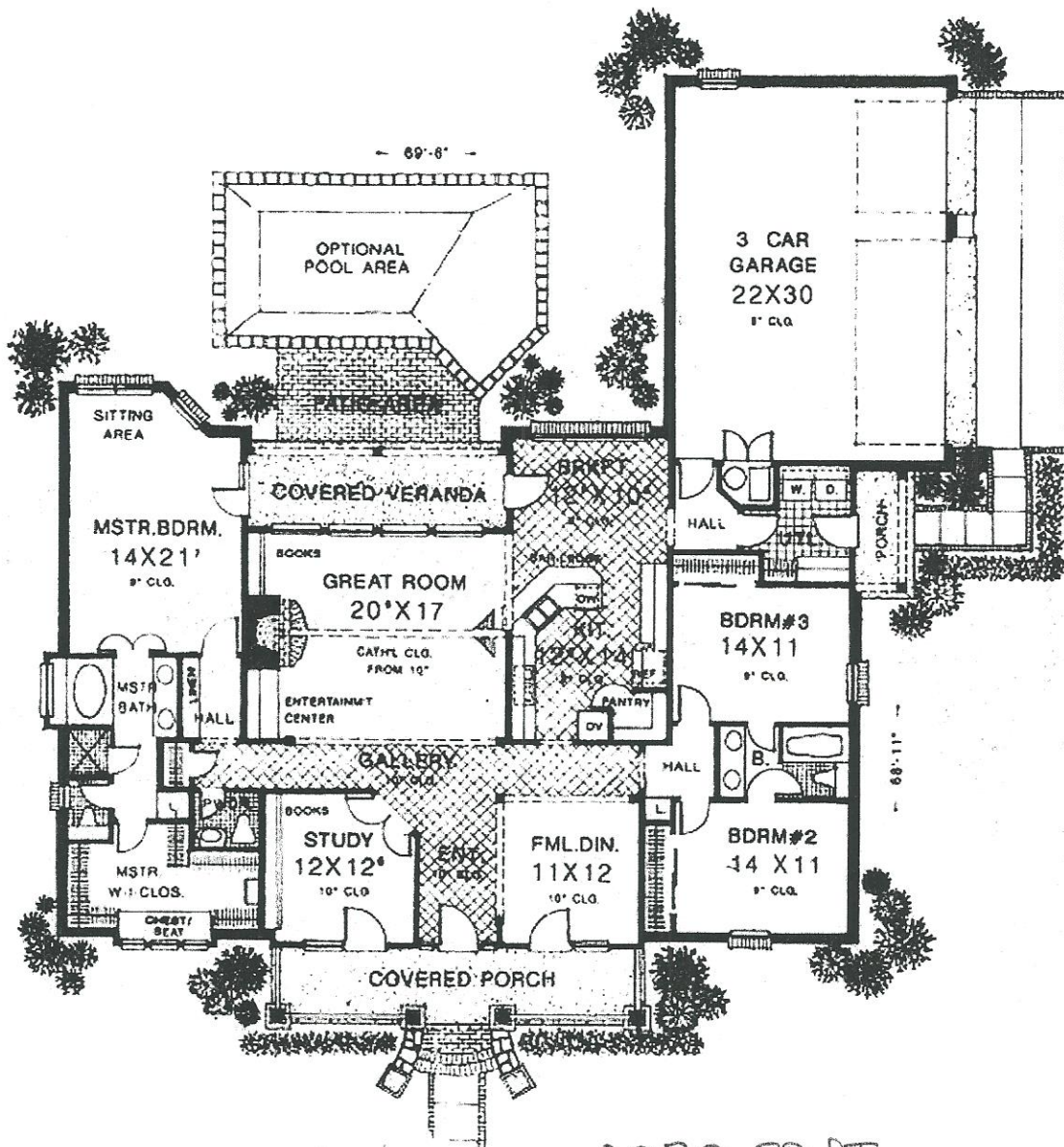
all images copyrighted by designer

Make any plan uniquely your design. Get a free quote for making your custom changes.

[Use the
Quote Form](#)

OR

[Use Our Flash
Customizer](#)



2387 SQ. FT.