

Marble Arms® Rear Sight
Part Numbers
Gun Sight Specifications
Installation & Maintenance Instructions



Marble Arms® Sporting Rear Sight Chart

Short Blade 1-7/8" Long (Step Elevator Included)

Style	Description	Elevation Adjustment	Mfg#
Flat Top	#63	.275"-.505"	6300
Flat Top	#63H	.350"-.630"	6301
Semi-Buckhorn	#64	.275"-.505"	6400
Semi-Buckhorn	#64H	.350"-.630"	6401
Full Buckhorn	#65	.300"-.510"	6500
Bullseye	Short	.338"-.535"	6950



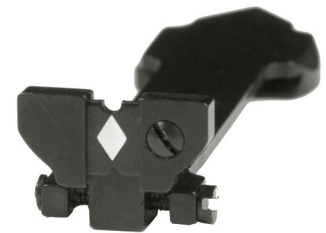
Long Blade 2-3/4" Long (Step Elevator Included)

Style	Description	Elevation Adjustment	Mfg#
Flat Top	#66	.300"-.510"	006600
Flat Top	#66H	.350"-.630"	006601
Semi-Buckhorn	#67	.300"-.510"	006700
Semi-Buckhorn	#67H	.350"-.630"	006701
Full Buckhorn	#68	.300"-.510"	006800
Bullseye	Long	.338"-.535"	006951



Marble Arms® Folding Rear Sight Chart

Style	Description	Sight Height	Mfg#
Folding Sporting Rear	#95	.320"-.420"	009500



Marble Arms® Folding Leaf Sight Chart

Style	Description	Sight Height	Mfg#
Flat Top	#69	.360"-.460"	006900
Flat Top Folding	#69H	.460"-.560"	006901
Flat Top Folding	#69EH	.520"-.620"	006902
Windage Adjustable	#69W	.360"-.460"	006910
Windage Adjustable	#69WH	.460"-.560"	006911
Windage Adjustable	#69WEH	.520"-.620"	006912



Fixed Blade (No Step Elevator Adjustment)

Elevation Adjustment	Mfg#
.438"	006952



Flat Top with Windage Adjustment (#69W, #69WH, #69WEH)

Measure from bottom of Dovetail to bottom of "U" or "V" notch.

Marble Arms® Rear Sight Replacement Parts Chart

Item	Mfg#
Notch Piece & Screw	009500
Double Step Elevator Short (Fits #63, #63H #64, #64H, #65) Bullseye Short	009100
Double Step Elevator Long (Fits #66, #66H, #67, #67H, #68) Bullseye Long	009200
Single Step Elevator (.050" Thick)	009050
Single Step Elevator (.080" Thick)	009080



Item	Mfg#
Slot Blank-Blued	001187
Slot Blank-Stainless Steel	001188



Calculating Rear & Front Sight Height Combination



1. Measure the diameter of the barrel at the point of the rear sight is going to be installed and at the point of the front sight going to be installed (example: 1.0" rear sight and .750" front sight).

2. Divide the diameters by 2 (example: $1.0'' / 2 = .500''$ and $.750'' / 2 = .375''$).

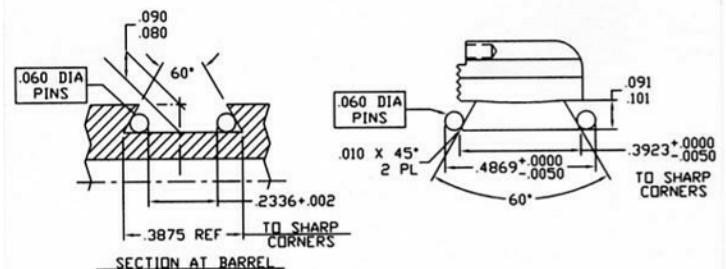
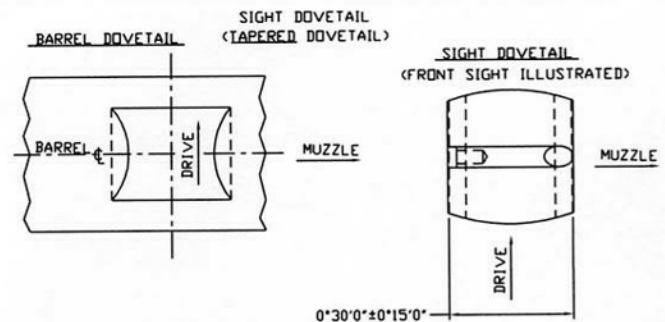
3. Check the rear sight height adjustment chart. You want to be about 1/3 up from bottom adjustment. using a sporting rear #67 adjusts from .300" to .510". Total adjustments is .210". Divide $.210'' / 3 = .070''$. Add the .070" to the lowest adjustment height (which is .300") and you come up with .370". This is 1/3 up from bottom adjustment.

4. Add the 1/3 adjustment to the center line distance (example: $.370'' + .500'' = .870''$).

5. Subtract the front sight center line figure from the rear sight height (example: $.370'' + .500'' = .870''$).

6. You need a combination of front ramp and front sight with the height of .495". Ramps are measured from the base to the bottom of the dovetails. Front sights are measured from the bottom of the dovetail to the top of the bead.

7. Or you could go with a front sight height of .588". .495" (height need from top of barrel to top of sight) + .093" (which is the depth of the dovetail cut in barrel).



Distance Between Front & Rear Sights

Amount of Adjustment Necessary to Correct

	14"	15"	16"	17"	18"	19"	20"	21"	22"	23"
*1"	0.0038	0.0041	0.0044	0.0047	0.005	0.0053	0.0055	0.0058	0.0061	0.0064
*2"	0.0078	0.0083	0.0089	0.0094	0.01	0.0105	0.0111	0.0116	0.0122	0.0127
*3"	0.0117	0.0125	0.0133	0.0142	0.015	0.0159	0.0167	0.0175	0.0184	0.0192
*4"	0.0155	0.0167	0.0178	0.0189	0.02	0.0211	0.0222	0.0234	0.0244	0.0255
*5"	0.0194	0.0208	0.0222	0.0236	0.025	0.0264	0.0278	0.0292	0.0306	0.0319
*6"	0.0233	0.025	0.0267	0.0283	0.03	0.0317	0.0333	0.035	0.0367	0.0384

	24"	25"	26"	27"	28"	29"	30"	31"	32"	33"	34"
*1"	0.0066	0.0069	0.0072	0.0074	0.0077	0.008	0.0082	0.0085	0.0088	0.0091	0.0093
*2"	0.0133	0.0138	0.0144	0.0149	0.0155	0.016	0.0156	0.0171	0.0177	0.0182	0.0188
*3"	0.0201	0.0209	0.0217	0.0226	0.0234	0.0243	0.0251	0.0259	0.0268	0.0276	0.0285
*4"	0.0266	0.0278	0.0289	0.03	0.0311	0.0322	0.0333	0.0344	0.0355	0.0366	0.0377
*5"	0.0333	0.0347	0.0361	0.0375	0.0389	0.0403	0.0417	0.0431	0.0445	0.0458	0.0472
*6"	0.04	0.0417	0.0434	0.045	0.0467	0.0484	0.05	0.0517	0.0534	0.0551	0.0567

How to Use Table Above-Suppose a rifle, having a sighting radius of 24" between front sight and receiver sight, shoots 6" high at 100 yards, even with the rear sight adjusted as low as possible. Remove front sight and measure overall height, preferable with a micrometer. This might be .410", such as a Marble No. 41MR. Reference to columns for 24" and 6" on table above will show a necessary correction of .040". This would mean a new, higher front sight (with an overall height of .410" plus .040" for a correction height of .450") such as a Marble No. 45MR, should be installed.

Sighting in should be done with a bench rest or prone with a sand bag or other rest for the rifle. Do not put rifle barrel or forearm directly on solid surface, but put the back of your hand or wrist on the rest and hold forearm of the rifle securely in your hand with approximately the same tightness of grip you would use when shooting at running game. If the firearm or barrel is rested directly on the sand bag or rest, the rifle will shoot higher than when held firmly while shooting at game as more "muzzle flip" will occur.