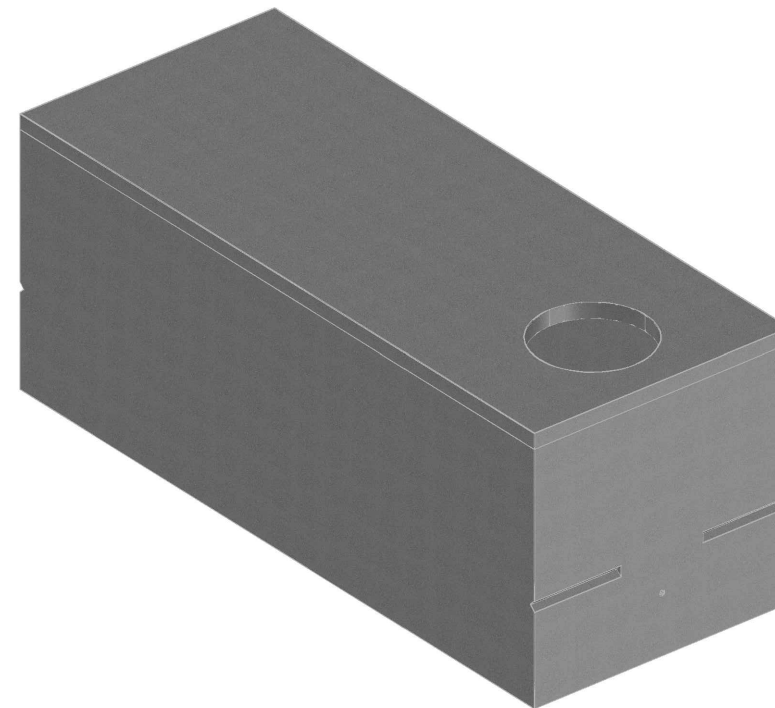
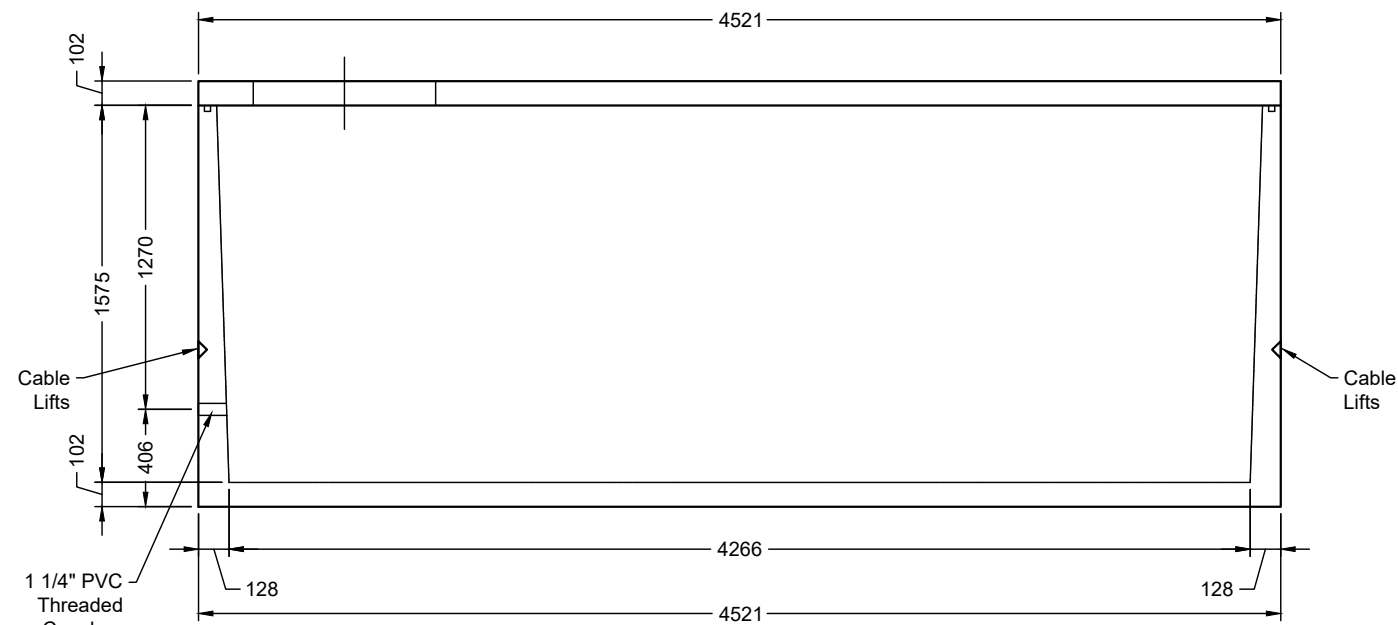


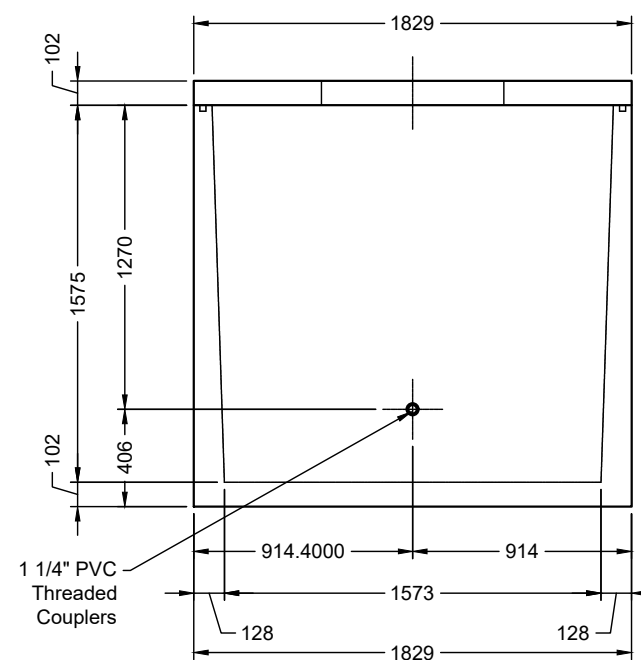
**PLAN VIEW**



**ISOMETRIC**



**SECTION A-A**



**SECTION B-B**

CONCRETE	RELEASE	MPa	20			
	28 DAY:	MPa	35			
	AIR CONTENT:		6% ± 1%			
	WEIGHT:	kg	8600	VOLUME	m <sup>3</sup>	3.607
	TYPE:	kg/m <sup>3</sup>	2402			

STRAND		mm	-
		MPa	-

MARK	DESCRIPTION	QTY.



- NOTES:**
- 1) CEMENT : PORTLAND CEMENT TYPE 50(HS)
  - 2) Max AGGREGATE SIZE: 20mm
  - 3) 28 DAY STRENGTH: MIN. 35 MPa.
  - 4) ENTRAINED AIR: 6%±1%
  - 5) REINFORCING TO CAN/CSA-G30.18 400 MPa
  - 6) ALL UNITS ARE IN MILLIMETERS UNLESS OTHERWISE NOTED.

DWG. NO.	REFERENCE	NO.:	REVISION DESCRIPTION	BY	APP'D	DATE	DRW BY	SWM	2018/11/16
-	-	A	ISSUED PLAN	-	-	2018/11/16	CH'K BY	-	-
-	-	-	-	-	-	-	AP'D BY	-	-
-	-	-	-	-	-	-	AP'D BY	-	-
-	-	-	-	-	-	-	AP'D BY	-	-
-	-	-	-	-	-	-	SCALE: NTS	PAGE: 1 OF 1	

<b>TITLE:</b>		<b>2500 Gallon Water Cistern DETAIL DRAWING</b>	
<b>PROJECT NO.:</b>		<b>JOB NO.:</b>	
<b>DRAWING NO.:</b>		<b>SVI-WC-2500-01A</b>	

