



# Goose Creek Wildlife Sanctuary, Inc.

Giving native wildlife a second chance ...

Holiday 2011 Newsletter



## Preparing for Winter

We all make changes in preparation for the winter months ahead. Whether it's unpacking winter clothes or making sure our heaters are in good working order, we all do something. And like us, wildlife also prepares.

Many animals migrate to warmer areas. Whether it's a 10,000 mile flight or just moving down to lower warmer ground, animals make changes for winter as well.

Some animals hibernate, some grow new and thicker fur, and some seek out better shelters. Beavers build their own structures, while other animals, opossums for instance, take advantage of brush piles, hollow logs, or woodpiles. Many animals, like flying squirrels, occupy collective dens to conserve body heat, while others, such as bears, tough it out alone. Some even undergo chemical changes to prevent their tissues from freezing, like lizards.

Many animals, like bears and some birds and bats, put on extra weight which is stored as fat and provides much needed energy. Food preferences also change with the seasons because of availability. Birds that eat insects and spiders during the summer may eat fruits and seeds during the winter. Deer eat green plants in the spring and summer, corn, acorns and other nuts in the fall, and in the winter, buds and twigs of woody plants.

Whatever we do to prepare for winter helps us to make it through. It's a tough time and we all need some help...animals included!

### ***Things we can do to help wildlife make it through the winter:***

Whenever possible, it's best to provide natural sources of food. Consider planting flowers and trees that provide food sources during the winter. If you're putting out food, oiled sunflower seeds are a great source of calories and are enjoyed by a variety of animals. Suet feeders provide birds with the high fat diet needed to provide energy.

If you just can't stand not raking up the leaves, consider making a brush pile in an out-of-the-way corner of the yard. By stacking larger limbs, loose vegetation and then leaves, you've helped provide a safe haven for ground birds, rabbits and hibernating reptiles, amphibians and insects.

Many animals will take advantage of woodpiles, so consider stacking a few pieces of firewood in a crisscross pattern. And, don't forget the water! Offer several locations of fresh water. Consider placing some up high and some at ground level.



### Inside this issue:

*Wild Thing Auction Recap* 2

*Christmas Wish List* 2

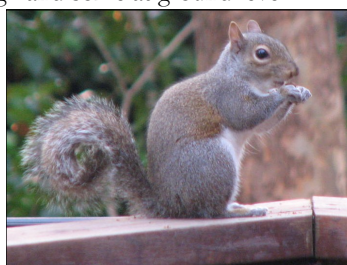
*Goose Creek in Winter* 2

*Animals of 2011* 3

*Announcements and Events* 4

### Did You Know:

- Beavers spend the entire winter with family members in a tiny enclosed chamber in their lodge.
- Chimney swifts migrate between North America and Peru every year (6,000 miles round trip).
- The eastern screech owl is the smallest species of owls in the southeast.
- A fox uses its tail (or "brush") as a warm cover in cold weather and as a signal flag to communicate with other foxes.







Going once...  
Going twice...  
Going WILD!  




### Wild Thing Auction Recap

The 2011 Wild Thing Auction was a big success, thanks to the many attendees, volunteers, and sponsors. The event was held at on October 14th at the Capital City Country Club. With hundreds of items ranging from trips to jewelry, themed baskets, gift certificates and everything in between there was something for everyone!! And, among other distinguished guests, Nyx the barred owl and Floyd the screech owl made guest appearances. **Many thanks to our wonderful sponsors!** This event wouldn't be possible with you!



#### Golden Eagle

Wild Birds Unlimited  
Harry Harper Law Offices  
Gail Harper  
Tina Harper

#### Blue Heron

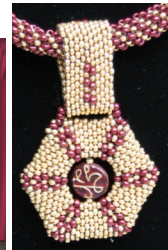
Dr. Cynthia Tie  
RussTech Language Services  
Judson & Diana Orrick  
Marianne Short

#### White Squirrel

Chip & Denise Harris  
Nancy Bell  
Marge von Goeben  
Farmers & Merchants Bank  
Hope Keating  
Lion Mane  
Kool Beanz  
North Florida Animal Hospital  
Westwood Animal Hospital  
G & G Concrete & Mansony  
The UPS Store  
Michael Barrett

#### Red Fox

The Gem Collection  
Kraft Nissan



**Do your little bit of good where you are; it's those little bits of good put together that overwhelm the world—Archbishop Desmond Tutu**

### Christmas Wish List

- 2 incubators—\$1,100 each

We desperately need to replace two worn out incubators that stopped working this Fall. Spring baby season will be upon us soon and these are crucial to the survival rate of our youngest and sickest!

- Volunteers who can sew to create sleep sacks from old sweatshirts.
- Volunteers who are handy with a saw to make simple perches.

### Goose Creek in the Winter

While most animals have the ability to move around and find better shelter, our educational animals are dependent on us. If conditions are extreme, we can bring them into the rehab room, but we also think that it's important that they experience the seasons as is natural. When temperatures are extremely low, volunteers pitch in to cover the cages with plastic to help provide a little more protection. If severe weather were to last longer, each animal is considered individually and decisions are made based on body weight, condition and size. Although our red tail, Mojo, is our largest educational bird, he is missing a wing. Since their wings help protect and keep the body warm, that's a major consideration. Our screech owls not only have much smaller body sizes, they are also older which figures into our decision. Many factors are considered for each individual.



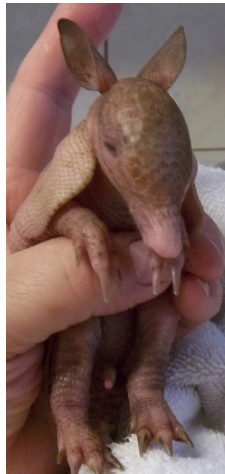
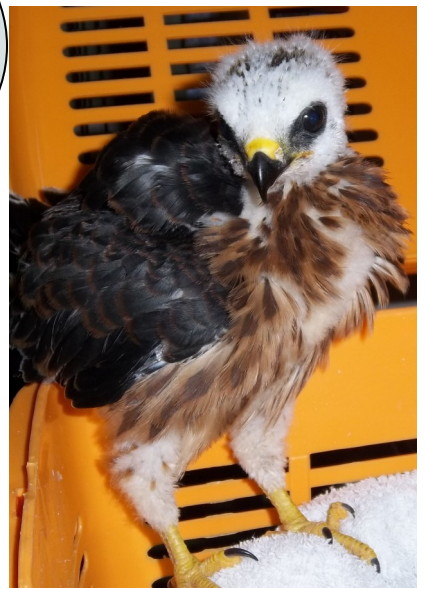
Outside rehab animals are being prepared to make it in the wild so they are provided with nest boxes, pine straw, hollow logs and piles of leaves to create their own shelter.

Winter is a challenge for all of us. Whether you choose to provide food sources, shelter or water for wildlife, you are helping make it just a little bit easier for them. Goose Creek is dedicated to wildlife, but we also network closely with domestic animal groups. They too need help during the winter months. Consider donating towels and blankets to the Animal Services Center, Leon County Humane Society, or any of our great local rescue groups. You may even want to open your home to a homeless pet this winter. And please, keep an eye out for strays. Together, we can make the world a better place for all creatures!





Because of you...  
Those we cherish will have a  
Happy Holiday. We can never  
thank you enough. Warmest  
wishes for the season from all  
of us at GCWS.





# Goose Creek Wildlife Sanctuary, Inc.

Like Us on Facebook!

[www.goosecreekwildlifesanctuary.org](http://www.goosecreekwildlifesanctuary.org)

*Animal Hotline: 850-545-3491*

*Business Address:  
3400 Williams Rd.  
Tallahassee, FL 32311*



*Business Phone: 850-508-7587  
E-mail: [info@goosecreekwildlifesanctuary.org](mailto:info@goosecreekwildlifesanctuary.org)*

Goose Creek Wildlife Sanctuary, Inc., 3400 Williams Road, Tallahassee, FL 32311 registers annually with the State of Florida. (Registration number FL CH 5849.) A copy of the official registration and financial information may be obtained from the Division of Consumer Services by calling toll-free within the State (800) 435-7352. Registration does not imply endorsement, approval or recommendation by the State.

GCWS: All rights reserved for this publication and its contents

## Announcements and Events

### Holiday Gift Sale

The newest t-shirt is 100% cotton in light blue and features one of our 2010 rescued bobcats.

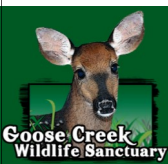
Many great gift ideas are on sale now at the GCWS Store via our website, at Wild Birds Unlimited (save S&H) located at 1505 Governor's Square Blvd., or use the order form below. Visit our website for even more fabulous items. Your purchase helps us support the animals throughout the year



Available Sizes: Youth M-L, Adult S-XXL. Each \$18

Ornament designed and donated 100% by Fool Moon Treasures: Each \$8

Buy a combination t-shirt and ornament for \$25



Fawn T-shirt (green) \$18  
Available Sizes: Youth M-L, Adult S-XXL.  
Each \$18

Total	Add:	Total	Add:
0-\$10	\$3	\$71-\$90	\$7
\$11-\$30	\$4	\$91-\$110	\$8
\$31-\$50	\$5	\$111-\$130	\$9
\$51-\$70	\$6	Over \$130	10% of order



Pewter Fawn Ornament \$8



Fox T-shirt (black) \$18  
Pewter Fox Ornament \$8

Item Name	Size	Quantity	Total
Shipping & Handling Charges (for ornaments and shirts)			
Donation			
<b>Total</b>			

Other ornaments and t-shirts are available on our website.

You may fax credit card (MC, VISA or AMEX) orders to 850-893-8244 or send payment to our business address below:

CC Number: \_\_\_\_\_

CC Exp Date: \_\_\_\_\_

Name: \_\_\_\_\_

Address: \_\_\_\_\_

City: \_\_\_\_\_ State: \_\_\_\_\_ Zip: \_\_\_\_\_

Phone: \_\_\_\_\_ E-Mail: \_\_\_\_\_

If this is a gift, check here: \_\_\_\_\_ We will include a gift card.

Goose Creek Wildlife Sanctuary  
3400 Williams Rd.  
Tallahassee, FL 32311

Avoid S&H charges by opting to pick up your purchase! Be sure to leave a phone number where we can reach you when your order is ready.