

WHEN AND WHAT TO RECYCLE

The 2nd Monday of each month – place out on curbside that Sunday evening.

All items may be placed in the SAME recycle bin, or can. If you use a can like a garbage can please make sure it has a removable top. Please do not put recyclables in black plastic bags as this could be mistaken for everyday garbage. Thank you!

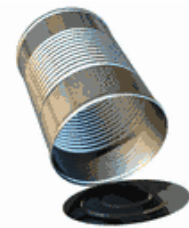
PLASTICS

- * Remove all caps, tops, & lids. These are NOT recyclable.
- * Clean items thoroughly.
- * Flatten item if possible.
- * Any plastics with one of these symbols on the bottom.



METAL

- * Place lids inside cans.
- * Clean items thoroughly.
- * Flatten if possible.
- * Clean aluminum foil & aluminum baking tins.
- * All food & beverage cans. **NO paint or aerosol cans.**



GLASS

- * Remove all caps.
- * **NO broken glass, light bulbs, mirrors, ceramics, plates, mugs, pottery, window or drinking glass.**

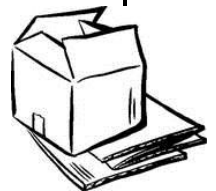


PAPER

- * Keep paper dry.
- * All newspaper, junk mail, magazines, catalogs, phone books, office and computer paper.

CARDBOARD

- * Keep cardboard dry.
- * Flatten boxes.
- * Remove excess tape, staples and plastic linings.
- * Pizza boxes if they are not greasy
- * Any other cardboard that has a Recycle symbol on the bottom.



****STYROFOAM IS NOT RECYCLABLE – PLEASE PLACE IN YOUR GARBAGE****