

Rock Talk



In This Issue

- October Club Meeting Program
- The Meeting as I Saw It
- Ugly Through and Through
- October Meeting Photos
- Saudi Arabian Geode
- Jasper Display
- Bench Tips
- The David Letasi Report
- October Club Meeting Minutes
- What is It?
- Annual Rock, Mineral, and Gem Show

November 2016



Rock Talk



November Club Meeting Program

The program for the November 9th meeting is one that members have been clamoring for. We are going to watch the documentary video called the "Cave of Swords". It's all about the cave of gigantic gypsum crystals and how it was formed. Members have been asking for it all year, so here it is! Bring

your friends and enjoy! We will have snacks and drinks as usual during the meeting. The Pixie machines will be set up for member use before the meeting and after the video. We will also have snacks and drinks.

The Meeting as I Saw it



as I saw it

by

Dorwin Skinner



The October Meeting

The early social time at the rock club meeting is always well attended. When I arrived at 6:15 there were at least a dozen people who arrived before me. The important part, at least to me, was the snack bar. And it was starting to fill up with lots of goodies. I looked around and saw that Elaine and Rovie Alford were back in town. Elaine was busy in the kitchen area and Rovie was setting up a polishing machine for June Betts. She had a nice Cabochon that needed some polishing and it wasn't long before she was busy on the machine. Dave Davis had a sizable chunk of Chrysocolla. I understand it can be cut, polished and it will make some nice jewelry, but uncut it doesn't look like much. As I meandered



June and Jim Betts at the Pixie machine

around I saw two new people bringing in two nicely done up trays of cookies. Jen and Olivia Spicer had made sugar cookies and peanut butter cookies to tempt us off our diets. I fell off the wagon and can testify that they were delicious. We had another new person attending tonight. I guess our fame is starting to spread. Mark Moore brought in some specimens to show Dave Letasi. One of them was Jasper from the Dead Camel Mine. Roger Wheeler had made a display of several types of Jasper, fabulous and beautiful cabochons all mounted on a display board. Dick Drum showed off some of his work, a nice re-purposed watch and a mounted elks tooth. Ralph had a few slabs to sell and I found a piece of Red Crazy Lace Jasper that I just had to have. All too soon Ralph brought the meeting to order. It looks like everything is on track for the December show but he will need lots of help to pull it off. John Schaediger told me he really enjoys the jewelry making workshop that meets on the first Tuesday of each month. Hats off to Judith Birx who is instrumental in organizing the classes. I need to get some pictures of the classes. As usual the meeting was short and to the point and

it wasn't long before my favorite part of the meeting started...snack time.

This month's *Rock Talk* cover is Petrified Wood.

Ugly Through and Through

by Mike Stone

After collecting several pieces of melon gravel in Idaho last September, I wanted to see what the inside looks like. Using a small tile saw I cut one of the rocks in half. I was surprised at how easily it cut and then understood how the basal could have been rounded during a relatively brief flood when Lake Bonneville collapsed about 17,000 years ago. [see October *Rock Talk*.] Next I used the rock grinder and polisher that I built earlier this summer [see August *Rock Talk*.] to polish the cut surfaces of each half, and hopefully bring out details that couldn't be seen on the rough cut surface. To my dismay, even after grind-



Melon gravel or scoria

Continued on page four

Next Meeting, Wednesday November 9, 7:00PM at the Weeki Wachee Senior Citizens Center

October Club Meeting Photos

Dorwin Skinner photos



Mark Moore and Dave Letasi



Cabochon by June Betts



Olivia Spicer, Jen Spicer, and Roger Wheeler



Members enjoying the pre-meeting



Dead camel jasper



Creations by Dick Drum



Rovie Alford setting up the machines



Ralph calling the meeting to order



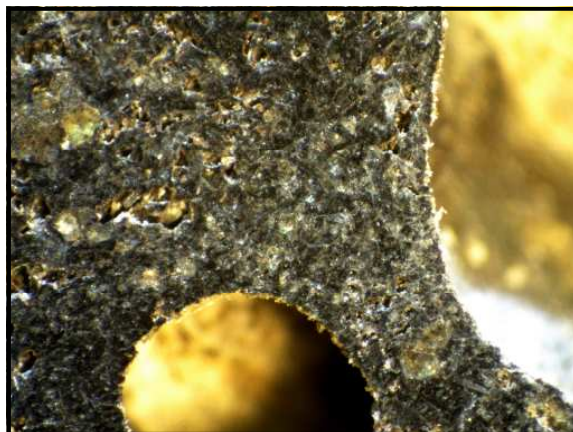
Red crazy lace jasper

Ugly from page one

ing and polishing the flat surface, there wasn't much if any additional detail to be seen. The entire rock is peppered with voids where gas was once trapped inside the molten material.



Unimpressive on the outside and on the inside.



Low-level and high-level magnification

The molten rock beneath the earth is subjected to enormous pressure from the weight of overlying rock. This pressure forces various gases to dissolve within the liquid rock. A good analogy is a bottle of Coke. At the bottling plant CO₂ gas under high pressure is forced into the liquid Coke. To keep the pressure high, and the gas dissolved in the liquid, a cap is put on the bottle. If you uncap the bottle this removes the pressure and the dissolved gas bubbles come out of solution, giving Coke its fizz. The gas may escape directly into the atmosphere, or it may mix with some of the liquid to form a frothy, foamy head. If the gas escapes rapidly, like when the bottle is shaken before it is opened, the force of the escaping gas is so powerful that it blows some of the liquid right out of the bottle. Magma behaves similarly. When magma reaches the surface, it is "uncapped", that is, the pressure of the overlying rock is removed. As a result, the dissolved gas bubbles out of the liquid rock. If you could look down into an erupting volcano the magma would be fizzing and the bubbles would create a frothy "head" on the lava. If large amounts of gas escape all at once, some of the red-hot, liquid rock will be blown into the air. Most of the violence associated with volcanic eruptions is due to the force of escaping gas.

<http://www.jsu.edu/dept/geography/mhill/phylabtwo/ignrokdiscuf.html>

Melon gravel is called *scoria*. Scoria is a dark-colored igneous gravel rock with abundant round bubble-like cavities known as vesicles. It ranges in color from black or dark gray to deep reddish brown. Scoria usually has a composition similar to basalt, but it can also have a composition similar to andesite.

<http://geology.com/rocks/scoria.shtml>

We will have examples of melon gravel at the November club meeting.



Want Your Photos?

Club members who would like jpeg images of themselves or images from any issue of *Rock Talk* can contact me and I will email them to you. Mike Stone, n1ve@amsat.org

Saudi Arabian Geode

I received a phone call from someone in Spring Hill who asked if I knew anyone who could polish a geode for him. He told me the geode was found in Saudi Arabia by his father-in-law about thirty years ago. I asked him to send me photos of the geode and said I'd post them in our November newsletter to see if anyone in the club would be willing to polish the specimen for him or give him the name of someone who would. I suggested that he bring the specimen to our gem show in December to have someone tell him about the geode and possibly find someone to polish it. He said he would bring it to the gem show.

Please let me know if you or anyone you know is willing to polish this huge geode.

Mike Stone





Jasper Display by Roger Wheeler

Withlacoochee Rockhounds—Rock Talk

Club Officer Elections

Club officer elections will be held at the December meeting and all members are encouraged to consider how they can best serve our club. There will be several openings for officers and appointed positions. We could use some “new blood” to help plan and guide the future of this club. New ideas are always a good starting point. If you have the imagination, and interest in seeing our club continue to flourish, please consider filling one of these positions.

The following leadership positions need to be filled: **vice president, secretary, program coordinator, sunshine chairman, education chairman, and one board of directors member.** Also if anyone is interested in assuming the roll of **president or treasurer**, please let any officer or any member of the board of directors member know at our next meeting, or call one of them. Names and phone numbers are on the back page of this newsletter.

Your Favorite Specimen

We are always looking for something of interest for our club members. We're sure that many club members have specimens in their collections that would be of interest to others in the club. If you would send us a digital photograph of your specimen we can publish it in the *Rock Talk*. A bit of information such as what it is, when, and where you found it would be great. If you don't have a digital camera, bring your specimen to a club meeting for others to see, and perhaps someone at the meeting could photograph it for the next issue of *Rock Talk*.

Rock Talk editors: Mike Stone and Peggy Burns

Show Us Your Stuff

We're always looking for information for the *Rock Talk*. Club members would enjoy seeing other members rock cutting and polishing equipment, display cabinets, projects, and favorite specimens. Take a photo and send it to your editors along with a description and we will be glad to include it in our newsletter.

Mike Stone
n1ve@amsat.org



Bench Tips by Brad Smith



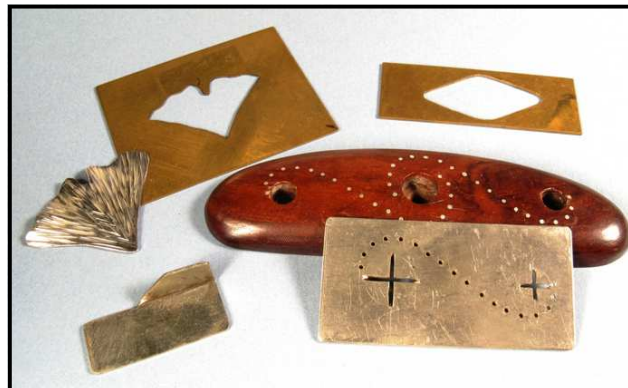
Bench Tips for Jewelry Making and Broom Casting for Creative Jewelry are available on Amazon

Templates

Whenever I have to make more than two to three exact copies of anything, I think of making a template. A template lets me easily draw the shape of an item. Art stores sell templates for common shapes like circles, ovals, hearts, etc. Other sources would include cooltools.us/ and kingsleynorth.com/

For nonstandard shapes, it's easy to make your own template. Simply cut the shape out of sheet plastic or thin sheet metal. My preference is brass. I carefully lay out the shape using a steel ruler, a set of dividers, a scribe, and a fine center punch.

One example is the brass template in the photo below that lets me quickly trace the design of ginkgo leaf earrings onto a silver sheet. Another is the nickel template, which makes it easy to drill a pattern of holes for pin inlay into wooden handles.



Metal templates

Dental Tools

A ready source of free tools is your local dentist. Dental picks can be reworked into wax tools or straightened and sharpened to make a stylus for marking and layout. The steel in these tools is high quality, and the handles are designed for comfort.

A special note however. If you want to modify the shape of the tool, don't try to just bend it with pliers.

Working this alloy of steel while it's cold will cause it to snap. Changing its shape can only be done when it's hot. I work it like a blacksmith. Prop your torch up on the bench so that you can use both hands for the work. Have a hammer and bench block ready. Heat the tip red hot, and hammer it straight or bend it with pliers.

And don't forget to ask your dentist for some of the cutting burs they throw out. These are useful for a variety of things. It's best to call a week or two before your visit and ask the dentist or hygienist to put some of these tools aside for you. It's good practice also to ask that they run them through the sterilizer for you. If that's not possible, pop them in an oven at around 250 F.

The Annual Withlacoochee Rockhounds Gem Show is Coming Veterans Memorial Park 14333 Hicks Road Hudson, FL 34669 December 2, 3, and 4



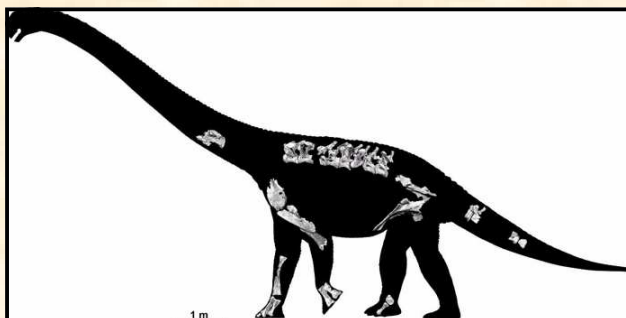
Club member volunteers are needed at the front desk, the club booth, as well as for set-up and break-down. If you volunteer your time, admittance to the show is free. Those who don't volunteer time for the show will have to pay the admittance fee. Sign up to help out at the November meeting.

October Club Meeting Photos



Rock Talk News

- Recently dinosaur brain tissue was found in Sussex England. The Brain tissue was found in the form of a brain cast composed of minerals that replaced the structure and preserved tissue from an early Cretaceous dinosaur named Iguanodon.



Sauropod skeleton parts

- Linda Spalding and I are still working on her fossil fish scale from Indiana. Paleontologist, Dr. Robert Carr of Concordia University of Chicago, stated that he believed it was an armor section from a Middle Devonian placoderm fish called Holonema.



- Fossil bones of a new Sauropod dinosaur were found by a sheep rancher in Australia. This is the most complete Sauropod skeleton so far found down under.



Fish scale similar to what Linda found.

- Our March 2017 meeting program will be presented by flint knapping expert Dave Davis and will feature stone tool making.
- I will present a program at our April 2017 meeting featuring the minerals and fossils found at the Vulcan Mine. I am asking members to bring in their Vulcan Mine finds.
- I will offer a field trip tour of The Florida Museum of Natural History on Saturday May 6th 2017 for our members. You need to sign up with Dorwin Skinner or Dave Letasi. We need at least ten participants. We plan to travel by car pool. We will gather after the museum tour at Harry's Sea Food Restaurant in Gainesville. Maps will be provided.

Petrified Wood



Dorwin Skinner recently acquired this magnificent piece of petrified wood. It is eighteen inches long and weighs twenty two pounds. He will bring it to the November meeting.

For Sale Items

Club members can post appropriate club-related type **for sale** items in the *Rock Talk* free of charge. Contact your editors by the 25th of the month to have your items posted in the next issue.

Mike Stone

n1ve@amsat.org



Next Meeting, Wednesday November 9, 7:00PM at the Weeki Wachee Senior Citizens Center

Club Meeting Minutes October 14, 2016

- The meeting was called to order by club president Ralph Barber at 7:15 PM
- Everyone stood for the Pledge of Allegiance and then a moment of silence.
- Judith Birx made a motion to accept the minutes of the September meeting as were published in the Rock Talk. The minutes were seconded by Rovie Alford and accepted by all.
- We had one visitor, Mr. Scott
- Club treasurer Janet Wheeler gave the Treasurer's Report
- No sunshine report

New Business:

- Ralph reported that he has eleven dealers and 28 tables sold for the December gem show. Volunteers are needed at the front desk, as well as set-up and breakdown. If you volunteer your time, admittance is free to the show. Those who don't volunteer time for the show will have to pay the normal admittance fee.
- Judith Birx said that the jewelry workshop is from 9-12 on the first Tuesday of the month.
- Linda Spaulding and Judith Birx are planning a trip to Graves Mountain, GA. More information will follow.
- Dave Letasi brought up several interesting places to visit.
- The Crystal River Indian Mound (Pre-Columbian Ceremonial Center) monthly guided evening walking tour. Torch light led by professional interpretive guides through the park. See what life was like from 1000 B.C to 1000 A.D.
- Bishop Planetarium in Bradenton is having a dinosaur exhibit from the American National History Museum.
- Mulberry phosphate area became known as Bone Valley because of all the fossilized remains common to phosphate deposits.
- Dorwin Skinner, Dave Davis and Jennifer Spicer will provide refreshments for next month's meeting .
- The meeting adjourned at 7:45 PM

Minutes respectfully submitted by Janet Wheeler.

Tuesday Workshop at the

Weeki Wachee Senior Citizens' Center

Elaine Alford is giving workshops on wire wrapping (stones), chain making (jump rings) and possibly other related skill at the Weeki Wachee Senior Citizens' Center in Spring Hill. The workshops are on the **first Tuesday of the month from 9:00 AM until 12:00 noon**. The cost per workshop is \$2.00. To participate in the workshops, one must be a member of the *Withlacoochee Rockhounds*, which covers dues to the *Weeki Wachee Citizens Club*.

Weeki Wachee Senior Citizens' Center.

3357 Susan Dr.
Spring Hill FL 34606

What is It?

Can you identify the specimen below?



Answer in next month's *Rock Talk*.

Last Month's "What is It?" was
Andalucite

November Mineral Show

November 12 and 13, 2016 Canaveral Mineral & Gem Society 43rd Annual Parade of Gems Dealers in lapidary, minerals, fossils, beads, jewelry and gemstones. Demonstrations; Grand Prize; Hourly Silent Auctions; supplies for hobbies and crafts and related activities. Excellent and economical Christmas shopping with one-of-a-kind creations that make wonderful gifts. Show Times: Saturday and Sunday 10:00 AM to 5:00 PM Location: Melbourne Auditorium, 625 East Hibiscus Blvd. Melbourne, FL 32901 Admission; \$5 Donation Contact: Don McLamb, CMGS President and Acting Show Chairman

Upcoming Shows

November 12 and 13, 2016

Canaveral Mineral & Gem Society
Melbourne Auditorium, Melbourne, FL 32901
www.canaveral-mgs.com/

November 19 and 20, 2016

The Gem & Mineral Society of the Palm Beaches
South Florida Fairgrounds, West Palm Beach, FL
www.gemandmineralsociety.org/

November 18, 19, and 20, 2016

SFMS Annual Meeting Hosted By:
Cobb County Gem & Mineral Society
Cobb County Civic Center, Marietta, GA
www.cobbcountymineral.org/

December 2, 3, and 4 2016

Withlacoochee Rockhounds of Hernando County
Veterans Memorial Park, Hudson, FL
www.withlacoocheerockhounds.com/

January 13, 14, and 15, 2017

Pinellas Geological Society, Inc.
with the SFMS Quarterly Meeting
Largo Cultural Center, Largo, FL

January 21 and 22, 2017

Tomoka Gem & Mineral Society
Volusia County Fairgrounds, Deland, FL
www.tomokagms.org

March 3, 4, and 5 2017

Suncoast Gem and Mineral Society 47th Annual Show
Minnreg Building, Largo, FL

Club Website

www.withlacoocheerockhounds.com

The Withlacoochee Rockhounds 42nd Annual Rock, Mineral, Fossil, Jewelry, and Gem Show is Coming

Withlacoochee Rockhounds Annual Gem and Mineral Show 2016

The Withlacoochee Rockhounds invites you to participate in their 42th annual gem and mineral show. The show will take place on December 2nd, 3rd, and 4th (set up on December 3rd) at the **Veterans Memorial Park, 14333 Hicks Rd., Hudson, FL.**

The show will open to the public on Friday, Saturday, and Sunday from 9:00 AM until 5:00 PM.

Spaces must be reserved in advance for the full three days of the show. Please send your deposit as soon as possible. No tailgating will be allowed.

Indoor Booths: (foot frontage only) includes one eight-foot table and chairs. \$85.00 per booth. A \$30.00 deposit per booth is required to reserve your space.

Setup: Starting at 9:00 AM Thursday, December 1st.

We will have special programs and demonstrations. If you are interested in demonstrating or putting on a program, please note this on your application.

Food will be available during the show and many restaurants are close-by for evening meals.

Send all requests for booth space to the show chairman. Because of postage costs, your canceled check will be acknowledgement of your deposit. Please make your check payable to **Withlacoochee Rockhounds**. Deposit money will be refunded up to 30 days prior to the show.

Website: www.withlacoocheerockhounds.com

Show chairman Ralph Barber 8034 Montrose Ave. Brooksville, FL 34613
352-200-6852
barberbloomers@hotmail.com

Withlacoochee Rockhounds

Membership Dues Form, 2016

Please complete the form and bring it with you to the December or January Withlacoochee Rockhound meeting. Attach your membership dues to the form.

Annual Dues: \$15.00 for an individual member or \$25.00 for a family

Please Print

Primary Member

Last name

First Name

Renewing members check here if no change in information below.

Additional family members:

Last name

First Name

Last name

First Name

Last name

First Name

Last name

First Name

Street Address:

City:

State:

ZIP

Phone Number(s):

Email Address:

Please give this completed form along with your check for dues made out to "Withlacoochee Rockhounds" to club secretary Janet Wheeler at the club meeting. Or mail the form and your check to Janet Wheeler 338 Appaloosa Rd. Tarpon Springs, FL 34688

Rock Talk



His Nibs

Diamonds and Jewelry
Insurance Appraisals
Gemstone Identification
Professional Repairs

Jerry Johnson, G.G.
Graduate Gemologist-GIA
(352) 573-0830

12470 Spring Hill Drive
Spring Hill, FL 34609

Hours: By Appointment Only

5-15

Your Business Card Size Ad in Rock Talk

The cost to advertise your businesses in *Rock Talk* is \$25.00 for twelve issues—one year . Contact Mike Stone or Peggy Burns to set up an ad in both the club newsletter and our website. It will benefit both your business and our club.

RALPH BARBER

STONE JEWELRY
bottle wind chimes

Hernando County Farmers Market
US 19
Spring Hill FL
352.200.6852
barbersbloomers@hotmail.com

4-15

Withlacoochee Rockhounds

Purpose

We are a non-profit organization whose purpose is to foster interest and promote knowledge of minerals, gems, fossils, lapidary arts, and earth sciences, through regular meetings, informative programs, workshops, and field trips. PLUS our annual gem and mineral and jewelry show. Membership is open to anyone sharing such interests.

Dues

Dues are \$25.00 annually for a family and \$15.00 annually for a single member

Club Meeting Location and Time

Weeki Wachee Senior Citizens Center, 3357 Susan Drive in Spring Hill. The meetings are held on the second Wednesday of the month at 7:00 PM.

2016 Club Officers

| | | | |
|--------------------------|-------------------------------|-------------------|--|
| President..... | Ralph Barber..... | 352-200-6852..... | barbersbloomers@hotmail.com |
| Vice President..... | Doug DuPont..... | 352-515-1517..... | ddupont6@tampabay.rr.com |
| Secretary..... | Melodye Steverson..... | 352-683-9496..... | melodye@designsbymelodye.com |
| Treasurer..... | Janet Wheeler..... | 727-938-3644..... | ceecgirl@tampabay.rr.com |
| Rock Talk Editors..... | Mike Stone / Peggy Burns..... | 603-524-0468..... | n1ve@amsat.org |
| Club Web Master..... | Mike Stone..... | 603-524-0468..... | n1ve@amsat.org |
| Mailing Reporter..... | Janet Wheeler..... | 727-938-3644..... | ceecgirl@tampabay.rr.com |
| Program Coordinator..... | Melodye Steverson..... | 352-683-9496..... | melodye@designsbymelodye.com |
| Education Chairman..... | Gloria DuPont..... | 352-515-1517..... | ddupont6@tampabay.rr.com |
| SFMS Stamp Program..... | Audrey Stead..... | 352-688-7821..... | audreyste35@gmail.com |
| Gem Mine Chairman..... | Jean Casanova..... | 352-442-2667..... | |
| Sunshine Chairman..... | Audrey Stead..... | 352-688-7821..... | audreyste35@gmail.com |

Board of Directors: Rovie Alford, Ralph Barber, Doug DuPont, Gloria DuPont, Dave Letasi, Melodye Steverson, Mike Stone, Janet Wheeler