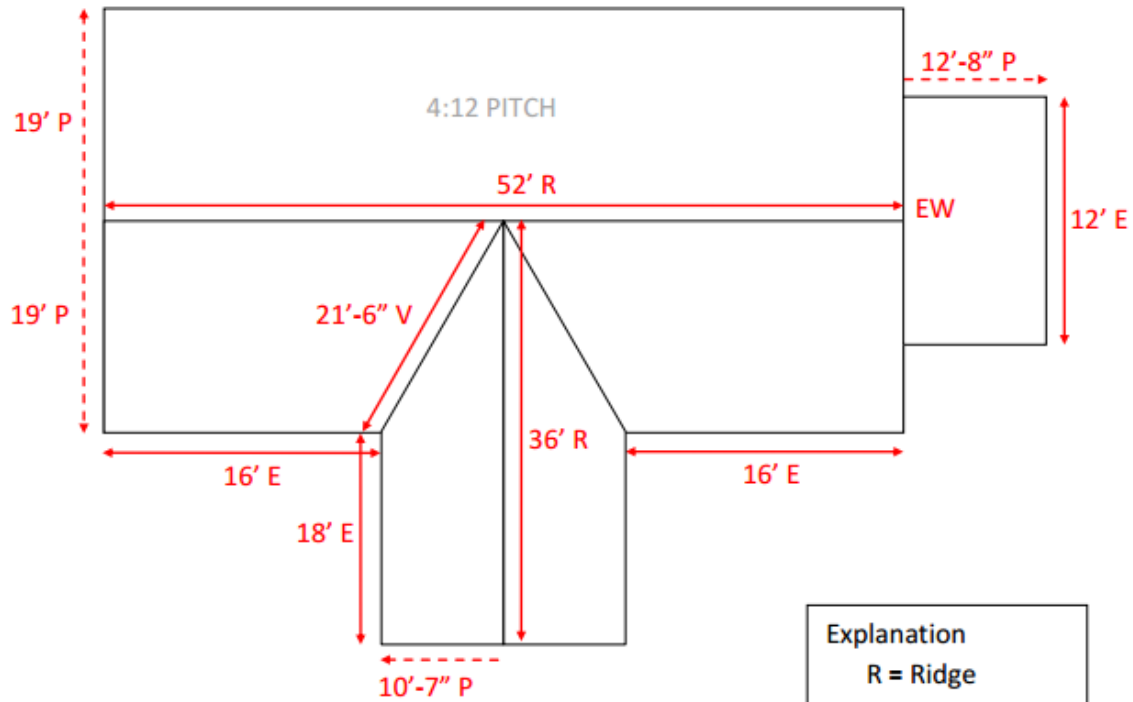
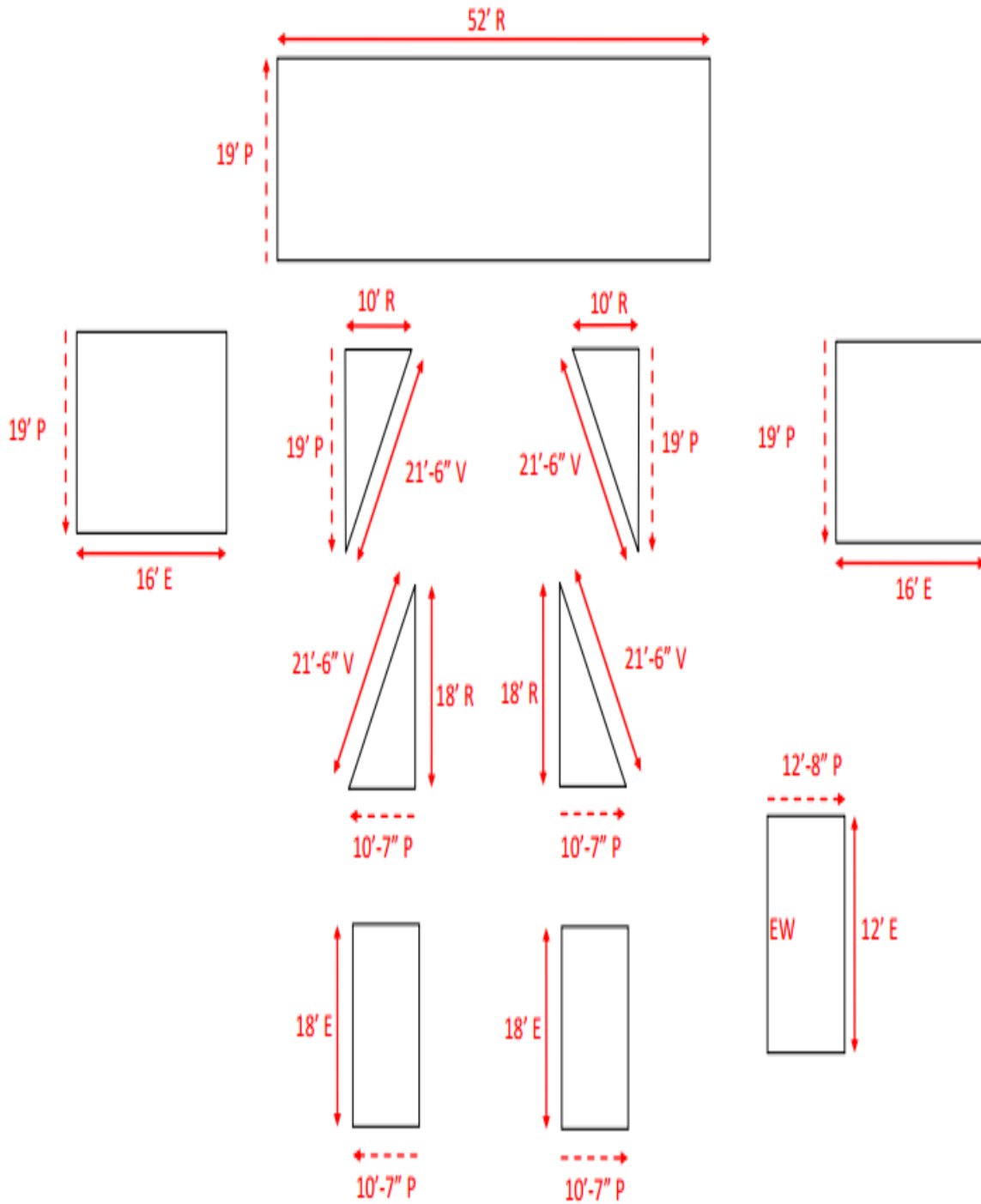


- The first step in figuring your metal roofing is to make a sketch of it, complete with the roof measurements. Take the house below as an example:



| Explanation |                |
|-------------|----------------|
| R           | = Ridge        |
| EW          | = Endwall      |
| V           | = Valley       |
| E           | = Eave         |
| P           | = Panel Length |

2. The second step is to break it into rectangles and triangles like this:



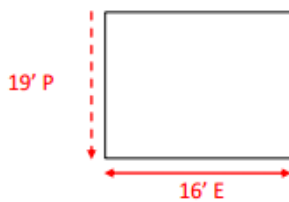
## Figuring Vertical Panel Materials:

### Panels

#### Rectangles:

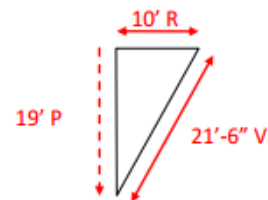
Divide the width of each section by the width of the panel you are using to get the number of panels. Specify the panel lengths, to the half-inch.

In this example, for a 3' wide panel you would need 6pc at 19' long for this section.



#### Triangles:

Measure each panel getting shorter every X length across (replace X with the width of your panel). There will be one panel of each length for each triangle.



**Or** ask about an Excel spreadsheet where you plug in the panel length, base, and panel width to find out how much shorter each panel needs to be.

**Or** if you don't mind a little waste, divide the width (10' in this case) by the width of the panel you are using to get the number of panels. The length is as needed.

If you did it this way for the above example, for a 3' wide panel you would need 4pc at 19' long for this section.

Make a list showing the quantity needed for each length. We recommend that you add 2 panels of the longest length.

### Trim

Add up the total footage of each type of trim; ridge, gable, eave, valley, transition, endwall, sidewall, etc and put it in a list like this:

- Ridge – 88 feet
- Gable – 124 feet
- Eave – 132 feet
- Valley – 44 feet
- Endwall – 12 feet

Again with the trim it is recommended that you add about 10% for waste, trim laps, etc...

### Panels

| Qty. | Length |  | Qty. | Length |
|------|--------|--|------|--------|
|      |        |  |      |        |
|      |        |  |      |        |
|      |        |  |      |        |
|      |        |  |      |        |
|      |        |  |      |        |
|      |        |  |      |        |
|      |        |  |      |        |
|      |        |  |      |        |
|      |        |  |      |        |
|      |        |  |      |        |
|      |        |  |      |        |
|      |        |  |      |        |
|      |        |  |      |        |
|      |        |  |      |        |

### Trim

| Roof Area       | Feet |
|-----------------|------|
| Ridge or Hip    |      |
| Gable           |      |
| Eave            |      |
| Valley          |      |
| Transition      |      |
| Endwall         |      |
| Sidewall        |      |
| Other (specify) |      |
| Other (specify) |      |
|                 |      |

