

**Rabbit Anti-Bcl-2 [EP36]: RM0006, RM0006RTU7**

**Intended Use:** For Research Use Only

**Description:** Expression of Bcl-2 $\alpha$  oncoprotein inhibits the programmed cell death (apoptosis). In most follicular lymphomas, neoplastic germinal centers express high levels of Bcl-2 $\alpha$  protein, whereas the normal or hyperplastic germinal centers are negative. The Bcl-2 family of proteins regulates apoptosis by controlling mitochondrial permeability and release of cytochrome c. Bcl-2 is an anti-apoptotic protein that resides in the outer mitochondrial wall and inhibits release of cytochrome c. Over-expression of Bcl-2 has been shown to promote cell survival by suppressing apoptosis. It has been documented that Bcl-2 becomes deregulated in tumor cells as a result of translocation into the immunoglobulin heavy-chain locus and is therefore activated in B-cell malignancies. Bcl-2 is useful in differentiation of follicular lymphoma from reactive follicular proliferation (Bcl-2 negative). In addition, Bcl-2 has been shown to be correlated with disease prognosis in breast cancer, prostate cancer, ovarian cancer, endometrial cancer and colon cancer. The sensitivity of this antibody in detection of follicular lymphoma is higher than other Bcl-2 antibody as reported by Masir et al.

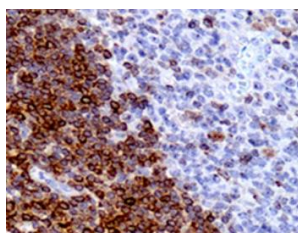
**Specifications:**

Clone: EP36  
Source: Rabbit  
Isotype: IgG  
Reactivity: Human  
Localization: Cytoplasm  
Formulation: Antibody in PBS pH7.2, containing < 0.2% BSA and < 0.09% sodium azide (NaN<sub>3</sub>).  
Storage: Store at 2°- 8°C  
Applications: IHC  
Package:

Description	Catalog No.	Size
Bcl-2 Concentrated	RM0006	1 ml
Bcl-2 Prediluted	RM0006RTU7	7 ml

**IHC Procedure\*:**

Positive Control Tissue: HCC, normal liver  
Concentrated Dilution: 50-200  
Pretreatment: Citrate pH6.0, 15 minutes using Pressure Cooker, or 30-60 minutes using water bath at 95°-99°C  
Incubation Time and Temp: 30-60 minutes @ RT  
Detection: Refer to the detection system manual  
\* Result should be confirmed by an established diagnostic procedure.



FFPE human tonsil stained with anti-Bcl-2 using DAB

**References:**

1. Novel Etoposide Analogue Modulates Expression of Angiogenesis Associated microRNAs and Regulates Cell Proliferation by Targeting STAT3 in Breast Cancer. Srinivas C, et al. PLoS One 10:e0142006, 2015.
2. Analysis of male reproductive parameters in a murine model of mucopolysaccharidosis type I (MPS I). Nascimento CC, et al. Int J Clin Exp Pathol 7:3488-97, 2014.
3. Targeting Bcl-2/Bcl-XL induces antitumor activity in uveal melanoma patient-derived xenografts. Némati F, et al. PLoS One 9:e80836, 2014.

Doc. 100-RM0006  
Rev. A